

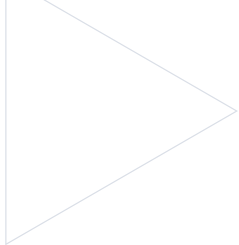


# FTTx Engineering Catalogue

PIA Installers, Contractors & Network  
Build Engineers/Operators

Order online at [comtecdirect.co.uk](http://comtecdirect.co.uk)  
Call 01480 415414





Founded in 1978 and acquired by ETC Group in 2020, Comtec is the UK's largest value-added distributor of telecom and IP equipment to both the carrier and enterprise markets.

Our Managed Services solution meets long-term supply chain requirements for operators and contractors whilst our Product Distribution solution meets the same or next day delivery requirements for operators, network installers and their subcontractors.



### Comtec Product Distribution

From our extensive stockholding we serve installers of fibre optic and copper networks on a next day basis. Value added services include:

- ▶ Product Hire
- ▶ Product Finance
- ▶ Tool & Van Kits
- ▶ Calibration, Repair and Service
- ▶ Cable Cutting



### Comtec Supply Chain Management

A bespoke product sourcing and supply chain outsourcing service for telecoms operators and systems vendors. Services include;

- ▶ Global product sourcing and procurement
- ▶ Forecasting and inventory management
- ▶ Leading industry brands
- ▶ Process re-engineering
- ▶ Product and batch testing
- ▶ Product design and system integration
- ▶ Technical support
- ▶ Product assembly
- ▶ Cabinet pre-build
- ▶ Logistics



***Our solutions enable you to deploy and maintain networks quickly, efficiently and to budget***



# Global Reach



With operations in 12 countries and an investment by The Carlyle Group, ETC Group is positioned to significantly grow our products, services, and presence globally. ETC's operations span France, the United States, Portugal, Israel, the Dominican Republic, the UK, the Middle East, Far East, and West Africa.



**0.6** Billion sales



Over **6,000** customers worldwide



More than **17,000** SKUs of network materials



Supplying over **50** carriers in Europe, Middle East and US



Over **750** global sourcing and supply partners



Over **610,000** network product deliveries per year



**9 million** km of fibre in 2020



**810,000 sq ft** of warehousing



Dedicated team of over **950** employees

# Ordering

## Service and Support

We pride ourselves on exceptional service. Support is available via our experienced sales, project, product and technical teams.

## Stock and Availability

We carry a significant stock holding with every product selected for its quality, performance and value and, because we manage our own distribution centre, products are delivered to you without delay.

## Easy Ordering

We're on hand Monday to Friday between 8.00am and 6.00pm to take your order, confirm price and delivery details. Orders can also be placed online at [www.comtecdirect.co.uk](http://www.comtecdirect.co.uk)

## Discounts

Discounts are available dependent on order quantity and size of project.

Simply call our sales team for further details.

## Delivery

Next day delivery to UK Mainland is guaranteed for all orders placed by 5.30pm\* (excluding cable cutting and cabinets) and is Free of Charge on orders over £150\*. For timed deliveries and export sales please speak to our sales team.

\* Some exclusions apply. Full details available online.

## Cable Cutting Services

Cable cutting services are available until 4.30pm where next day delivery is requested (final order time may vary).

## Head Office

Order phone 01480 415414

Email [fttxsales@comtecdirect.co.uk](mailto:fttxsales@comtecdirect.co.uk)

## Glasgow

Order phone 0141 564 1234

Email [glasgow@comtecdirect.co.uk](mailto:glasgow@comtecdirect.co.uk)

## Online

[www.comtecdirect.co.uk](http://www.comtecdirect.co.uk)



## Terms and Conditions

All prices shown are ex-works and are exclusive of VAT which will be charged at the current rate. Comtec reserves the right to alter prices and product specifications without notification. For credit account customers within the UK, payment terms are 30 days from date of invoice. A full set of Comtec's terms and conditions of sale is available by calling 01480 415414. Comtec cannot be held responsible for any consequential losses caused by late delivery, but please be assured that Comtec will be doing everything within its power to ensure a speedy solution.

# Contents

## Manholes, Chambers & Furniture

Stackable Chambers & Covers.....	6
Joint Boxes.....	6
MOBRA Mounting Brackets.....	7
Cable Brackets & Bearers.....	8
Manhole accessories.....	9

## Mechanical Aids

Hydraulic Lifters & Accessories.....	10
Lifting Keys.....	10
Joint Box Keys.....	11

## Duct Accessories

Duct Motor.....	12
Rodding & Roping.....	13
Install Accessories.....	13
Cleaners & Lubricants.....	14
TDUX Duct Sealing System.....	15
Sealants, Resins & Closure Wrap.....	16
Marker Tapes.....	16
Cat & Genny Cable Locators.....	16
Jointing Closures & Accessories.....	17 - 20

## Site Equipment

Ladders.....	21
Rodding & Roping.....	21
Distance Measuring.....	21

## Pole labels & Marking

Pole labels & Marking.....	22 - 24
Pole Fixings & Accessories.....	24
Capping.....	26 - 27

## Cable Entry Solutions & Covers

BT Cable Entry Covers.....	27
Customer Lead-In Units.....	28 - 29

Fixings & Accessories.....	30
----------------------------	----

## Pole & Overhead Furniture

Pole Steps.....	31
Polehead Dropwire Rings.....	31
Handheld Braces.....	31
Test Probes.....	31
Pole Straps & Accessories.....	32 - 33
Overhead Cable Installation Tools.....	34
Grip Pulling Tools .....	35
Tensioners .....	35
Dropwire Pulleys & Brackets .....	35
Wall Plate .....	35
Anchor & Pole Brackets.....	36- 37
Cable Anchoring & Suspension Clamps...37 - 38	

## Jointing Closures & Accessories

CBT's, Drop Cables & Accessories.....	39 - 50
---------------------------------------	---------

## Fibre Optic Cabling

Fibre Distribution.....	42
Fibre Outlets.....	43
Fibre Optic Enclosures .....	43
ULW, Drop Cables & Accessories.....	44
Blown & EPFU Fibre Optic Cable.....	44 - 45

## Install Accessories

Portable Work Tray.....	46
Cable Dispensers & Drums .....	46 - 47
Sash Line & Dispenser.....	47
Pole Lifting & Handling.....	48
Ladder Stability.....	48
Pole Belts.....	48
Rigging Heads & Weights.....	49
Pole Lifting & Handling.....	49
Tensioning and Straps.....	50
Lifting Slings.....	50



## STAKKAbox Quad External Chamber Sections & Covers



STAKKAbox Quad is the only modular access chamber approved for use on Openreach networks. Complete chambers can be constructed from excavation to reinstatement in little more than one hour.



**Video Online**



Item	Description	Cover Size	Material	Mfr Ref	Width	Depth	Length	Price
809960	Quad Chamber System	EN4	HDPE	JMF 104	445mm	150mm	915mm	£89.93
809962	Quad Chamber System	EN6	HDPE	JMF 106	610mm	150mm	1310mm	£138.49
809290	Cover & Frame (Unbranded)	EN4	Concrete/Steel	-	445mm	-	915mm	£129.43
809578	Cover & Frame (Unbranded)	EN6	Concrete/Steel	-	610mm	-	1310mm	£214.53

## Joint Boxes & Covers

Joint box chambers moulded from glass fibre reinforced polyester moulding compounds for trouble free installation in driveways, paths etc.

- Manufactured under a system of rigidly applied quality control to ensure optimum, fully cured mouldings
- Max EN124 Loading: 25 Tonnes (B125)
- Joint boxes and covers sold separately
- Cover supplied with BT logo, unbranded options also available



Item	Description	Material	BT Ref	Width	Depth	Length	Price
992102	Joint Box	HDPE	No.23	225mm	490mm	512mm	£38.95
990682	Joint Box	HDPE	No.26	255mm	600mm	725mm	£59.00
992103	Joint Box Cover (BT Logo)	Ductile Iron	No.23	-	-	-	£35.15
992455	Joint Box Cover (BT Logo)	Concrete/Steel	No.26	-	-	-	£84.00

## Sump Grills

Tough PVC grill for manhole sumps.

- Also known as BT Grating Sump 2A



Item	Description	BT Ref	Height	Width	UoM	Price
992101	PVC Sump Grill	2A	250mm	250mm	Each	£4.50

## MOBRA Chamber Mounting Brackets & Accessories

MOBRA chamber mounting brackets and accessories for use with joints and termination boxes within cable chambers.

- No-drill MOBRA in three sizes to suit standard joint boxes and cables types
- Pivot arms available in two sizes
- Corner brackets for use in modular boxes



Item	Description	Type	Height	Width	Length	UoM	Price
822383	MOBRA Chamber Bracket	No-Drill JUF/2	-	220-300mm	-	Each	£16.69
822382	MOBRA Chamber Bracket	No-Drill JUF/4-6	-	410-620mm	-	Each	£16.50
822381	MOBRA Chamber Bracket	No-Drill JUF/10	-	660-850mm	-	Each	£19.50
822385	MOBRA Chamber Bracket Pivot Arm	For JUF/2 (Medium)	450mm	-	630mm	Each	£14.28
822384	MOBRA Chamber Bracket Pivot Arm	For JUF/4-6 & JUF/10 (Large)	650mm	-	820mm	Each	£13.50
822386	MOBRA Modular Box Conversion Bracket	No-Drill	-	-	-	Each	£8.93

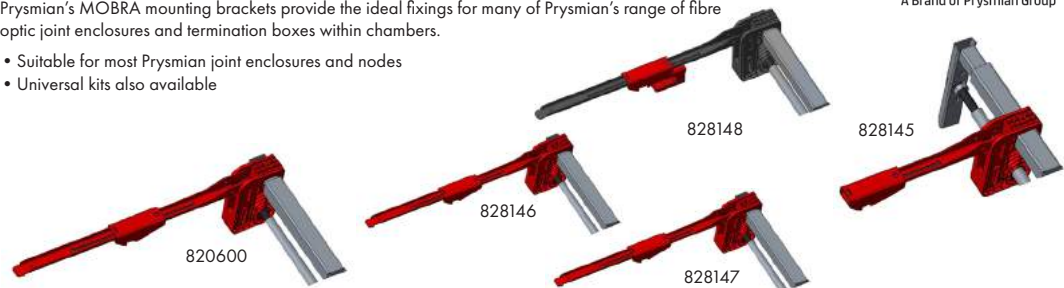
## Prysmian MOBRA Chamber Mounting Brackets

Prysmian's MOBRA mounting brackets provide the ideal fixings for many of Prysmian's range of fibre optic joint enclosures and termination boxes within chambers.

- Suitable for most Prysmian joint enclosures and nodes
- Universal kits also available

### Prysmian

A Brand of Prysmian Group



Item	Description	Type	Mfr Ref	Width	Length	UoM	Price
820600	TM MOBRA Mounting Kit	Small & Medium Node	XJTSC02405	60mm	810mm	Each	£40.67
828146	MOBRA Mounting Bracket	For LMJ	XJTSC03203	60mm	810mm	Each	£79.77
828147	Universal MOBRA Arm Mounting Kit	For LMJ	XJTSC02953	-	-	Each	£48.30
828148	Universal MOBRA Arm Mounting Kit	For UMJ/CMJ/MMJ	XJTSC03286	-	-	Each	£20.98
828145	Half Size Mounting Bracket	For UMJ/CMJ/MMJ	XJTSC03265	60mm	440mm	Each	£38.58

## CommScope TENIO Brackets

Brackets for use with TENIO fibre enclosures.

- For mounting enclosures and managing cables



COMMSCOPE®

Item	Description	Mfr Ref	UoM	Price
803903	TENIO-MOBRA Mounting Bracket	CW6452-000	Each	£22.31

## Cable Bearers (Wall Type)

Galvanised steel wall brackets for mounting cable bearers.

- For supporting cables in manholes and joint boxes
- Type numbers indicate the number of brackets which the bearers will carry
- Also known as BT Cable Bearer Wall Type



Item	Description	BT Ref	Length	Positions	UoM	Price
828375	Cable Bearer Wall	Type 1	178mm	1 Position	Each	£2.73
992083	Cable Bearer Wall	Type 2	279mm	2 Positions	Each	£4.83
992084	Cable Bearer Wall	Type 3	508mm	5 Positions	Each	£6.25
992085	Cable Bearer Wall	Type 5	813mm	9 Positions	Each	£8.30
828376	Cable Bearer Wall	Type 8	1270mm	15 Positions	Each	£10.84
828377	Cable Bearer Wall	Type 12	1879mm	23 Positions	Each	£37.96

## Cable Bearer Brackets

Cable bearer brackets used with wall type cable bearers and locking pins.

- Also known as BT Bracket Cable Bearer



Item	Description	BT Ref	Length	UoM	Price
828378	Bracket Cable Bearer	No.3	150mm	Each	£2.43
992090	Bracket Cable Bearer	No.5	165mm	Each	£2.31
992091	Bracket Cable Bearer	No.8	241mm	Each	£4.17
992092	Bracket Cable Bearer	No.12	343mm	Each	£5.00
828379	Bracket Cable Bearer	No.18	500mm	Each	£9.12
828380	Bracket Cable Bearer	No.24	650mm	Each	£13.39

## Manhole Steps

Galvanised non-slip step for brick or concrete manholes.

- Also known as BT Step Manhole 1



Item	Description	BT Ref	UoM	Price
992100	Manhole Step	No.1	Each	£5.70

## Foundation Bolts

Galvanised steel pin for securing bracket cable bearers to channel brackets.

- No. 1 for cross connection cabinets
- No. 2 for fixing cable bearers in new concrete and brickwork
- Also known as BT Bolt Foundation 1 and 2 respectively



Item	Description	BT Ref	Diameter	Length	Price
992096	Foundation Bolt	No.1	15.2mm	150mm	£2.30
992097	Foundation Bolt	No.2	12.7mm	125mm	£0.64

## Cable Bearer Locking Pins

Galvanised steel concrete foundation mounting bolts.

- Also known as BT Pins Locking Cable Bearer



Item	Description	UoM	Price
992095	Cable Bearer Locking Pins	Each	£0.62

## Iron Anchors

Galvanised steel device for mounting in concrete to provide an anchoring point.

- Also known as BT Iron Anchor 4



Item	Description	BT Ref	UoM	Price
992099	Iron Anchor	No.4	Each	£8.73

## Clamp Guide 2A

An extendible compression strut for clamping Guide Rod Flexible 3 and 4 and Guide Cabling 5 inside chambers and joint boxes.

- Extendable to fit chamber widths
- Moveable clamp guide for best position



Item	Description	UoM	Price
126481	Clamp Guide 2A	Each	£42.18

**ORDER  
ONLINE**  
comtecdirect.co.uk



## Hydraulic Manhole Lifter 4B

A hydraulic manhole lifter supplied with 4 pairs of keys used for lifting different types of carriageway covers.

- Safe working load: 800Kg
- Quick and easy to assemble

Keys & Lifter  
Also Available  
Separately



Item	Description	Type	UoM	Price
823336	Hydraulic Manhole Lifter 4B	Complete with Sets of Keys	Each	£550.00

## ManUp Key Lifting Tool

The ManUp Key is designed to make the removal of manhole covers easy and effortless. A 'one man' solution it ensures safe lifting and manual handling. V3 has 2 additional and improved grips for even more comfort and versatility.



- Manholes can be lifted without the use of hammers and chisels, preventing damage to covers and surrounding area
- Provides a momentary upward force of 1.5 tonnes from its 8Kg weight and slide hammer action
- One man solution still ensuring all health and safety aspects of safe lifting and manual handling
- Simply add the specific tip required for the industry required
- Other tips available to order
- 'Telecoms Kit Set' includes Lifting tool, 4 Tips & Locking rings in a padded case
- Comes with 2x Locking Clips & Case



Keys also available to purchase separately, see online



Item	Description	Includes	Height	Width	UoM	Price
824128	Lifting Tool (V3) & Telecoms Set	32mm & 22mm Flat Tips, 10mm J Tip & 20mm Oval Tip	800mm	200mm	Each	£229.41

## Joint Box Key No.5

Lever action pit lifter key for joint box and light concrete footway/driveway covers.

- Key No.5 has a supporting counter balanced leg to add safety to the lifting operation
- Also known as BT Key Joint Box 5
- Optional magnetic counter balance arms (828397)



Item	Description	Type	UoM	Price
994232	Joint Box Key No.5	Balanced Leg	Each	£23.89
829050	Joint Box Key No.5	Magnetic Balanced Leg	Each	£24.95
828397	Magnetic Counterbalance Arms	For Key Joint Box No. 5	Each	£9.49

## Pit Roller Bar

Metal bar used to roll open pit lids safely into a secure position.

- Also know as BT cover roller



Item	Description	UoM	Price
790888	Pit Roller Bar	Each	£6.33

## Keyhole Insertion Safety Shim Tool

The keyhole insertion safety shim, also known as a KISS tool, is used to assist the lifting of pit covers which have damaged insertion/key holes.

- Helps with pit covers that are damaged
- Limits the risk of injury
- Used with Joint Box No.5



Item	Description	Price
822980	Keyhole Insertion Safety Shim (KISS) Tool	£8.25

# Contractors Catalogue

Packed with essential items for your FTTx network build

To request your copy call 01480 415414



## Duct Motors

Duct motor for placing drawrope and light cabling into ducts.

- Supplied complete with bag grips
- Replacement bags available separately
- Used in conjunction with 828410 Air Compressor and 828409 Reel Hose 6



Item	Description	BT Ref	Diameter	Length	UoM	Price
824142	Duct Motor	2B	-	-	Each	POA
828409	Reel Hose 6	-	3/8"	300Mtr	Each	POA
828410	Air Compressor for Duct Motor 2B	-	-	-	Each	POA

## Duct Motor Bag Grips

Bag grips for use with duct motor 2B which is used when placing drawrope and light cabling ropes into duct.

- Available in small, medium and large



Item	Description	Size	UoM	Price
200056	Duct Motor Bag Grip 4	Medium	Each	£9.70
200058	Duct Motor Bag Grip 5	Small	Each	£9.70
200057	Duct Motor Bag Grip 6	Large	Each	£9.70

## Duct Grip Coupling

Grip couplings are designed to assist the threading of sub ducts by stiffening the leading end. They comprise of BT couplings with 3 metre long glass fibre rods which screw into the sub duct.

- Grip Coupling 1A designed to thread 25mm diameter sub duct



Item	Description	BT Ref	Length	UoM	Price
822057	Grip Coupling	1A	3Mtr	Each	£46.25

## Drawrope

3 Strand polypropylene rope for light cabling work.

- Supplied on a wooden drum for ease of deployment and retrieval
- Durable and re-useable



Item	Description	Diameter	Length	UoM	Price
991970	Drawrope	6mm	500Mtr	Roll	£25.90

## Universal Frame Cable Dispensers

Universal steel folding reel dispenser for cable and rope.

- Frame supplied with removable bar
- Max reel: 500 x 400mm
- 24 inches high



Item	Description	Capacity	UoM	Price
993471	Frame Cable Dispenser	91Kg	Each	£27.75

## Socomore Cable Lubricant

**socomore**

A water-based underground cable installation lubricant for fibre optic cable pulling operations. Engineered to meet the special requirements of pulling inner duct (sub duct), communications and fibre optic cables.

- Easy to apply
- Superior friction reduction



Item	Description	Volume	UoM	Price
993414	Cable Lubricant	20Ltr	Each	£79.51

## Lubricating Pump

Pump used for applying cable lubricants.

- Also known as Pump Lubricant 2A



Item	Description	BT Ref	UoM	Price
200319	Pump Lubricant	2A	Each	£255.00

**SIGN UP**  
to receive product news  
and offers via email  
[comtecdirect.co.uk](http://comtecdirect.co.uk)

## Polywater Blown Fibre Cable & Duct Lubricants



Lubricants to aid with blowing cable into ducts & microducts.

- Prelube 2000 suitable for lubricating fibre cable and ducts
- Prelube 5000 suitable for lubricating micro fibre cable and microducts
- FTTx Spray Lubricant makes the installation of fibre drops easy. Spray or wipe the cable or conduit. Quick and easy to use without mess or excess lubricant



Item	Description	Volume	Mfr Ref	UoM	Price
821552	Duct Lubricant	950ml	Prelube 2000	Each	£10.58
821551	Microduct Lubricant	240ml	Prelube 5000	Each	£15.32
828128	FTTx Spray Lubricant	950ml	FTTx-35LR	Each	£12.44

## Polywater SqueezyKleen Loose Tube & Ribbon Gel Cleaners



SqueezyKleen cleaner has been developed to clean and fan fibres in two wipes to save time and money.

- Removes the need for alcohol use
- Safe to use, reduced odour and minimal vapour concentration
- Suitable for all gel filled cables including loose tube and ribbon fibre
- Industry tested and approved



Item	Description	Volume	Mfr Ref	UoM	Price
828129	SqueezyKleen Cable Cleaning Wipes	300 Per Tub	TC-D300	Each	£32.07
828130	SqueezyKleen Cable Cleaning Fluid	950ml	TC-35LFD	Each	£14.50

## Polywater AquaKleen Water-Based Fibre Optic Endface Cleaner



Polywater's AquaKleen AQ is a blend of 90+% deionized water and cleaning solvent and leaves no residue after evaporating.

- Non-combustable, safer to use
- Easier to ship and handle via land or air
- Water-based solution, cleans like alcohol and made with deionized water
- Industry tested and safe



Item	Description	Volume	Mfr Ref	UoM	Price
828132	AquaKleen Water Based Endface Cleaner	60ml Dropper Bottle	AQ-2DR	Each	£11.72
828133	AquaKleen Water Based Endface Cleaner	950ml	AQ-35LF	Each	£24.95

## CommScope TDUX Inflatable Duct Seals

COMMSCOPE®

TDUX is a very flexible & reliable inflatable wraparound duct sealing system for permanently sealing telephone cable ducts in order to prevent the leakage of water from the duct into exchange vaults or manholes.

- Suitable for use with plastic, concrete or steel ducting wall-feed through systems
- Can be used with polyethylene or lead-jacketed cables
- Various sizes available for sealing a wide range of ducts and cables
- Fast and easy to install, even in congested enclosures
- Water and airtight up to 50kPa
- Environmentally friendly & non-toxic
- Resistant to chemicals & bacteria
- Easy and fast removal



Item	Description	Duct Size	Mfr Ref	UoM	Price
994383	TDUX Inflatable Duct Seal	45-60mm	TDUX-60-INT	Pk of 10	POA
828153	TDUX Inflatable Duct Seal	55-75mm	TDUX-75-INT	Pk of 10	POA
804380	TDUX Inflatable Duct Seal	60-100mm	TDUX-90-INT	Pk of 10	POA
994386	TDUX Inflatable Duct Seal	75-110mm	TDUX-100-INT	Pk of 10	POA
828155	TDUX Inflatable Duct Seal	110-125mm	TDUX-125-INT	Pk of 10	POA

## CommScope TDUX Inflation Tool

COMMSCOPE®

Inflation tool for use with TDUX kits. Uses CO2 gas cylinders which contain 16g of CO2 and can inflate a minimum of 3 TDUX-100 duct seals in vacant ducts. Features an automatic pressure monitoring system to guarantee the required inflation pressure of 3.0 +/- 0.2 Bar.

- Supplied with carry case
- TDUX Gas cylinders purchased separately (994388)



Item	Description	Mfr Ref	UoM	Price
788489	TDUX Inflation Tool	TDUX-IT-16	Each	POA

## CommScope TDUX Gas Cylinder Refills

COMMSCOPE®

CO2 gas cylinders for use with duct inflation tool.

- Gas cylinders contain 16g of CO2 (can inflate a minimum of 3x TDUX-100 duct seals per cylinder)
- Supplied in packs of 10



Item	Description	Mfr Ref	UoM	Price
994388	TDUX Gas Cylinder	E7512-0160	Pk of 10	POA

## Resin 6C

2 Part resin for sealing cabinet bases.

- Resin Pack 6C is a two component polyurethane compound specifically formulated for use as a sealant against the ingress of moisture into the concrete bases of cabinets cross-connection
- Gel/Set time: 2hrs/24hrs



Item	Description	Type	Volume	Price
789132	Resin 6C	Cabinet Base Sealant	3.3Ltr	£28.16

## Duct Sealant 16A

Compound 16A is a single component non-curing mastic specifically designed for sealing against gas and water in ducts or conduits.

- Suitable for use with copper telephone cables, copper cables and fibre cables
- Seals cable ducts and underground conduits
- Prevents gas and water penetration



Item	Description	Weight	UoM	Price
991803	Duct Sealant 16A	1Kg	Kg	£6.58

## Emtelle EM-Wrap Closure

EM-Wrap closure can be used universally over multi tube bundle diameters from 20mm up to 40mm (including connectors). Can be used as a protective barrier for straight joints and branch joints when branching microducts.

Contains:

- Double layer sealable EM-Wrap
- 2 x Rolls of amalgamating tape
- 3 x Releasable cable ties
- 2 x Large cable ties



Item	Description	UoM	Price
829417	EM-Wrap Double Layer	Each	£32.90

## Underground LDPE Marker Tapes

LDPE, non-adhesive tapes designed to be buried into the ground to mark buried cable routes. Can prevent damage when future contractors dig into the ground and find this tape first.

- 810628 includes a tracer wire so that it can be detected underground
- Telephone & electric variants also available



Item	Description	Width	Length	Price
810628	Detectable Tape	150mm	100Mtr	£29.57
813050	Undetectable Tape	150mm	365Mtr	£13.65

## vScan CAT & Genny Cable Locators

The vScan utility avoidance tool has been designed to make buried utility detection a simple and cost-effective process. Main features and operational controls are in keeping with industry standards so minimal training is required.

- Shipped with a spacious canvas carry bag which fits the receiver, transmitter, leads and any optional accessories
- Large, high resolution, high contrast dot matrix display: makes signal interpretation simple and intuitive
- Auto backlight: for use after dusk
- Compass line direction indicator: ensures correct alignment over utility
- Visual, audible and vibration alerts: alerts can be Set for: shallow cable, overload, excessive swinging and overhead cables
- Passive signals: power, radio and also as a free option, cathodic protection (CP) 100Hz
- Current measurement: helps positively identify the targeted line
- Simple two button operation: on/off and information (such as depth and current)
- Movable speaker: allows the user to place the speaker against the ear while holding the receiver at arm's length
- Robust ABS casing with rubber protection bumpers for all site condition use
- 2GB auto data logging: helps identify usage and training needs



Item	Description	Model	UoM	Price
826478	Cable Avoidance Tool	vScan CAT & Genny	Set	£1008.39

## Prysmian Small Joint Closure (SJC)

**Prysmian**

A Brand of Prysmian Group

A 4 port closure designed for track and branch applications.

- IP68 rated for water & dust tightness
- Supplied with four knock-out ports and two entry glands
- Suitable for up to 24 fibre splices using 2.2mm protectors
- Single 24 fibre tray and additional management plate
- Each port accommodates a cable gland for cables 5-9mm or 6-12mm diameter
- Additional glands available separately



Item	Description	Fibres	Port Style	Mfr Ref	UoM	Price
821517	Small Joint Closure	24F	5-9mm Cable	XJTSC02335	Each	£26.38

## Prysmian Ultra Compact Multi-Function Joint Closure (UMJ)

**Prysmian**

A Brand of Prysmian Group

Designed to be used as cable chamber joint, track joint, spur joint or distribution joint and can accommodate up to 72 Fibre splices. A very robust and compact joint suitable for wall or pole mount applications.

- Ultra compact closure offering up to 72 fibre splices
- Fitted with 6 single element splice trays, each accommodating 12 splices per tray
- An integral input manifold manages the tubes to a common routing channel and has the provision for mounting two optical splitters
- 4 circular ports and an oval port for cables up to 23mm diameter
- 2 additional smaller emergency ports suitable for cables up to 12mm diameter
- Can be supplied with pole or wall mount bracket for vertical and horizontal application



Item	Description	Mfr Ref	Use	UoM	Price
824973	Ultra Compact Multi-Function Joint Closure	UMJ-F-X-XXXX-X-X-X	2.2mm Protectors	Each	£47.69

### OTHER CONFIGURATIONS AVAILABLE

## Prysmian Compact Multi-Function Joint Closure (CMJ)

**Prysmian**

A Brand of Prysmian Group

Designed to be used as a cable chamber joint, track joint, spur joint or a distribution joint and can accommodate up to 144 fibre splices. A very robust high capacity fibre joint in a compact size.

- Compact closure offering up to 144 fibre splices
- Fitted with 12 single circuit splice trays, each accommodating 12 splices per tray
- 4 circular ports and an oval port for cables up to 23mm diameter
- Can be supplied with pole or wall mount bracket and optional pressure test valve
- Other port entry kits available



Item	Description	Mfr Ref	Use	UoM	Price
814189	Compact Multi-Function Joint Closure	CMJ-F-X-XXXX-X-X-X	2.2mm Protectors	Each	£57.98

## Prysmian Medium Multi-Function Joint Closure (MMJ)

**Prysmian**

A Brand of Prysmian Group

The Prysmian Medium Multi-Function Joint Closure (MMJ) has a capacity of up to 288 fibres and ideally suited for use as a cable chamber joint, track joint, spur joint or distribution joint.

- Compact closure offering up to 288 fibre splices
- Fitted with 24 single element splice trays, each accommodating 12 splices per tray
- 4 circular ports and an oval port for cables up to 23mm in diameter
- Can be supplied with pole or wall mount bracket and optional pressure test valve
- Other port entry kits available



Item	Description	Mfr Ref	Use	UoM	Price
814212	Medium Multi-Function Joint Closure	MMJ-F-X-XXX-X-X-X	2.2mm Protectors	Each	£74.34

### OTHER CONFIGURATIONS AVAILABLE

## Prysmian Large Multi-Function Joint Closure (LMJ)

**Prysmian**

A Brand of Prysmian Group

Ideally suited for use within the external optical network and can be used for track joint, spur joint and loop applications.

- Large optical network closure with a standard splice capacity of 960 splices and above
- Mechanical oval port and central loop storage for up to 276 fibres using loose tube
- Two vertical splice tray stacks
- 10 circular ports and 1 mechanical oval port for cables up to 23mm in diameter
- Various mechanical cable entry glands available for multiple cable entry options
- Can accommodate a range of splitter modules from 1:2 to 2:64
- Closure is rated to IP68 sealed



Item	Description	Cap Version	Trays	Mfr Ref	Colour	UoM	Price
814256	Large Multi-Function Joint Closure	Medium Cap	80 Tray (40+40)	XTSC02366	Black	Each	£216.20

## Prysmian CMJ Oval Port Heat Shrink Entry Kits

**Prysmian**

A Brand of Prysmian Group

Used to install a loop of cable into the oval port of the smaller family of xMJ joints (except the LMJ).

- Contains all of the components required to prepare and install cable and route to the splice tray



Item	Description	Cable Range	Joint Type	Mfr Ref	UoM	Price
820483	Oval Port Heat Shrink Entry Kit	5-14.8mm	UMJ/CMJ/MMJ	XTSC01756	Each	£23.64

## Prysmian Oval Port Mechanical Entry Kits

**Prysmian**

A Brand of Prysmian Group

Used to install a loop of cable into the oval port of joint closures.

- Available for the LMJ or UMJ/CMJ/MMJ joint closures
- Each kit contains all components required to prepare and install cables and route fibres to the splice trays
- Cable sealed into the oval port using a mechanical gland system comprising of two plates and rubber block
- Each kit is specific to cable size indicated



Item	Description	Entry Type	Cable Range	CMJ	LMJ	MMJ	UMJ	Mfr Ref	Price
814268	Oval Port Mechanical Entry Kit	Loop Cable	6-8mm		✓			XJTSC02382	£16.01
814269	Oval Port Mechanical Entry Kit	Loop Cable	8-10mm		✓			XJTSC02269	£16.83
814261	Oval Port Mechanical Entry Kit	Loop Cable	10.1-12mm		✓			XJTSC02270	£17.70
814263	Oval Port Mechanical Entry Kit	Loop Cable	11.5-17.5mm		✓			XJTSC02185	£18.51
814271	Oval Port Mechanical Entry Kit	Loop Cable	5-7mm	✓		✓	✓	XJTSC02028	£18.67
814272	Oval Port Mechanical Entry Kit	Loop Cable	7-9mm	✓		✓	✓	XJTSC02029	£19.50
814270	Oval Port Mechanical Entry Kit	Loop Cable	11-13mm	✓		✓	✓	XJTSC02031	£19.50

## Prysmian Circular Port Cable Entry Glands & Tools

**Prysmian**

A Brand of Prysmian Group

Used to install cables into one of the 10 ports of a joint closure base. The glands are mechanical in nature and can be installed onto the cable and then simply pushed into the base of the joint.

- Each kit contains all parts necessary to seal the cable and secure the strength member of cables
- Multi-way glands are useful when installing a number of smaller cables into one circular port
- For larger cables use a Oval Port Kit



Item	Description	No of Entries	Cable Range	For Use With	CMJ	LMJ	MMJ	UMJ	Mfr Ref	Price
814278	Circular Port Entry Gland	1 Way	7-20mm	CSM or Aramid Cables	✓	✓	✓	✓	XJTSC01754	£12.88
814279	Circular Port Entry Gland	1 Way	20-23mm	CSM or Aramid Cables	✓	✓	✓	✓	XJTSC02193	£13.56
816064	Circular Port Entry Gland	2 Way	5-9mm	Cables or Conduit	✓	✓	✓	✓	XJTSC02186	£10.34
814190	Circular Port Entry Gland	4 Way	4-6mm	CSM Mini Cables	✓	✓	✓	✓	XJTSC02767	£12.09
814281	Circular Port Entry Gland	4 Way	5-7mm	Aramid Cables	✓	✓	✓	✓	XJTSC01755	£10.32
814274	Circular Port Entry Gland	4 Way	5-7mm	CSM Mini Cables	✓	✓	✓	✓	XJTSC02768	£13.16
814275	Circular Port Entry Gland	4 Way	7-8.5mm	CSM Mini Cables	✓	✓	✓	✓	XJTSC02769	£13.75
814276	Circular Port Entry Gland	8 Way	3mm	Cables or Conduit	✓	✓	✓	✓	XJTSC02260	£14.70

## Prysmian Joint Closure Accessories

**Prysmian**

A Brand of Prysmian Group

A selection of Prysmian joint closure accessories to aid installation.

- Silicone grease for use with joints, enclosures and port entry kits
- Gland spanners and port removal tools to aid installation and removal of port kits, see page 18
- Workstation support brackets designed to hold joint enclosures and make installation quicker and easier
- Anti-creep device used to anchor central loose tube fibre installed between helical tension clamp and joints or buildings



Item	Description	For Use With	Mfr Ref	UoM	Price
821519	Cable Entry Kit (6-12mm)	SJC Enclosures	XJTSC02471	Each	£3.53
814284	Wall/Pole Mounting Bracket	LMJ Joints	XJTSC02597	Each	£27.70
814286	Handle Kit	LMJ Joints	XJTSC02548	Each	£10.29
814285	Workstation Support Tool	LMJ Joints	XJTSC02274	Each	£81.24
814283	Workstation Support Tool	UMJ/CMJ/MMJ Joints	XJTSC00075	Each	£58.31
821141	Anti-Creep Device	-	XTSC00004	Each	£6.21



**PREFORMED  
LINE PRODUCTS**

# FIBERLIGN® SOLUTIONS for aerial FTTH

The connection you can count on



### Lyte Ladder 5B BT Style Aluminium Triple Box Section Extension Ladders



Class 1, three section aluminium ladder for pole work.

- Double safety catch and lashing rope
- Nylon rollers
- Butterfly top rung
- Extended Height: 6Mtr
- Closed Height: 2.5Mtr
- Weight 18.5Kg



Item	Description	Series	Price
993131	Ladder 5B	Pole Ladder	£299.31

### Lyte Ladder 7A BT Style Fibreglass Triple Box Section Extension Ladders



Class 1, three section fibreglass ladder for pole work in environments where electrical hazards exist.

- Double safety catch and lashing rope
- Nylon rollers
- Butterfly top rung
- Extended Height: 6Mtr
- Closed Height: 2.5Mtr
- Weight 23Kg



Item	Description	Series	Price
782016	Ladder 7A	Pole Ladder	£397.50

### Telescopic Clearance Rods

7 section telescopic glass fibre tubes for measuring height of overhead lines.



Item	Description	Length	UoM	Price
992199	Telescopic Clearance Rod	2.5Mtr	Each	£42.52

### Smart Sensor AR600E Cable Height Meter

A handy portable ultrasonic meter for fast and accurate cable height measuring.

Standard set includes:

- Height meter
- Batteries - 9V
- Accessory bracket (horizontal distance measurement only)
- User manual
- Carry case



Item	Description	Mfr Ref	UoM	Price
810595	Digital Ultrasonic Cable Height Meter	AR600E	Each	£286.35

## Silver Fox Legend Tie-On Cable Labels



Legend polyester laser printable tie-on labels.

- Print using any standard laser printer using Labacus innovator software
- Print up to 60 labels in 20 seconds
- Ideal for internal application
- Supplied on a pre-perforated A4 sheet
- Independently tested 70°C - 100°C for 2000 hours
- Also available in white

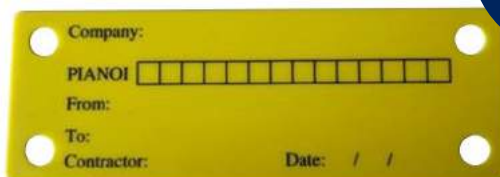


Item	Description	Height	Width	UoM	Price
808563	Legend Tie-On Cable Label	20mm	90mm	Pk of 10	£81.68
808830	Legend Tie-On Cable Label	13mm	60mm	Pk of 10	£108.91

## PIANOI Cabling Labels

For the identification of newly provided cables.

- Supplied in packs of 250
- 4x 6mm pre cut holes for affixing into position using cable ties
- Fields to be completed using fine permanent marker - BT Pen Marker 1 (994344)



Item	Description	Height	Colour	Length	UoM	Price
829650	PIANOI Label	35mm	Yellow	100mm	Pk of 250	£59.95

## Telegraph Pole Labels

A range of telegraph pole labels.

- Identification labels to be fixed to wooden poles
- Placed above the Pole Test Label or at eye level



Item	Description	Dimensions	UoM	Price
826084	Caution Overhead Fibre	70mmx70mm	Pk of 10	£8.71

## Defective Pole Labels 1024

These A1024 labels are used to identify and record defective poles.

- Four holes allow the label to be easily affixed to the pole using Pin Steel No 2 (793882)



Item	Description	UoM	Price
828386	Defective Pole Label A1024	Pk of 10	£5.36

For Labels use Capping Pins 793882 See Page 24



## Pre-Climb Pole Labels

Pre-Climb Pole Inspection Check Labels.

- Tear-proof label affixed to telegraph poles to mark pre-climb inspection check
- Secured using Pin Steel 2 (793882)
- 140mm x 100mm



Item	Description	UoM	Price
825949	Pre-Climb Labels	Pk of 50	£10.87

## Pole Test Labels

Pole test labels used when inspecting telegraph poles.

- Used as part of the pre-climb test
- Typically applied 4" from the base of the pole



Item	Description	UoM	Price
826085	Pole Test Label	Pk of 10	£7.65

## Staedtler Fine Tip Marker Pens



Fine tipped marker pens from Staedtler.

- Lumocolor permanent marker
- BT pen marker 1
- Lightfast with excellent smudge-proof and waterproof qualities on most surfaces



Item	Description	Line Weight	Colour	UoM	Price
994344	Marker Pen	0.6mm	Black	Each	£1.14

## Artline Fine Tip Marker Pens



Fine tipped marker pens from Artline for writing on all types of surfaces.

- Rich pigment ink
- Fast drying and long lasting
- Water and fade resistant



Item	Description	Style	Line Weight	Colour	Price
994345	Marker Pen	Permanent	1.2mm	Gold	£3.76

## Sharpie Marker Pens



Twin tip permanent marker pens designed to write practically anywhere.

- Increased functionality with both fine and ultra fine tips in one marker
- Permanent on most surfaces
- Fade and water resistant
- Quick drying ink
- AP certified nontoxic formula



Item	Description	Colour	UoM	Price
794634	Marker Pen	Black	Each	£1.55

## Bespoke Van Kits Available



Contact us today to find out more

## Pole Marking Discs

The plastic discs are used to designate telegraph pole identification.

- Supplied in packs of 50 discs
- Known as BT 'Pole Marking'
- To be fixed using Nails Bonding (826833)
- Discs are 40mm in diameter



Pole Marking Letters - Pk of 50

A	B	C	D	E	J	L	M	N	P	S	T	W	Price
826653	826654	826655	826656	826657	826658	826659	826660	826661	826687	823048	826663	826664	£11.10

Pole Marking Numbers - Pk of 50

0	1	2	3	4	5	6	7	8	9	Price
823050	823055	823052	823051	823056	823053	823057	823058	823054	823057	£11.10

## Aluminium Strips For Cable Cleating

Aluminium strips used on telegraph poles to secure dropwire cable every 450mm (18").

- Use in conjunction with bonding nails and galvanised washer 19



Item	Description	Length	UoM	Price
821725	Aluminium Strips	80mm	Pk of 25	£3.19
823039	Aluminium Strips	120mm	Pk of 25	£3.75
821428	Aluminium Strips	160mm	Pk of 25	£4.50

## Nail Capping Masonry Pins

Masonry nails suitable for concrete, block, brick or timber.

- Zinc plated carbon steel with inbuilt washer
- Also known as BT Nails Capping Masonry Steel Pin 2



Item	Description	Style	Length	UoM	Price
793882	Nails Capping Masonry	Pin Steel 2	1 1/8"	B100	£4.27

## Galvanised Bonding Nails

Galvanised steel round headed nails to be used in conjunction with galvanised washer 19 for securing aluminium strip and cappings to poles.

- Supplied in a 5kg box
- 45mm (L) x 5mm (Dia)



Item	Description	Diameter	Length	UoM	Price
826833	Nails Bonding	5mm	45mm	Pack	£17.68

CORNING



Deploy FTTH up to **50 percent faster** than field-spliced networks.  
Corning's OptiTap® pre-connectorised solution: it's about time.

Connect to a solution that gives you more speed, simplicity, and profitability. With our field-proven OptiTap® solution, you can pass twice as many homes as before — which could lead to twice the revenue.

No more timely and costly field splicing. Now you can deploy FTTH networks in half the time.



Are You Corning Connected?

Configure. Place. Connect.

Visit [www.corning.com/emea/en/ftth](http://www.corning.com/emea/en/ftth)

## Galvanised Tubular Washers for Universal Pole Brackets (UPB)

Galvanised steel tubular washers for use with hex-head bolts to secure Universal Pole Brackets (UPBs) to poles where the bolt is too long.

- Tubular washers are 27mm in diameter
- For use with hex head bolts

**For Hex Head Bolts**  
see page 33



**For UPB's**  
see page 36

Item	Description	Box Quantity	Diameter	Length	UoM	Price
828387	Washer Galvanised 16	50	27mm	65mm	Pack of 50	£41.15
828388	Washer Galvanised 17	200	27mm	20mm	Pack of 200	£60.67
828389	Washer Galvanised 18	200	27mm	40mm	Pack of 200	£104.95

## Galvanised Flat Washers

These galvanised flat washers are used with aerial cable fittings.

- Galvanised washer 4 is 50mm in diameter with an 18mm hole, 3mm in thickness
- Galvanised washer 19 is 20mm in diameter with a 7mm hole, 1.6mm in thickness - used with Bonding Nails and Aluminium Strips to secure cables to wooden poles



Item	Description	Diameter	UoM	Price
789104	Washer Galvanised 4	50mm	Pack of 100	£24.90
788554	Washer Galvanised 19	20mm	Pack of 770	£19.65

## Galvanised Steel Capping

Formed galvanised steel channel for protecting cables.

- Pre-drilled
- Sized by max cable diameter
- 992815 known as BT Capping Steel No.1
- 992816 known as BT Capping Steel No.4
- 992817 known as BT Capping Steel No.5



Item	Description	Max Cable Dia	Length	Price
992815	Steel Capping	19mm	2440mm	£16.61
992816	Steel Capping	50mm	2440mm	£20.40
992817	Steel Capping	75mm	2440mm	£26.64

## Metal Capping Adaptors

Galvanised steel boot for protecting cable between 19mm steel capping and 90mm duct.

- Also known as Elephants Foot or BT Connector Bend No.1



Item	Description	Type	UoM	Price
992812	Capping Adaptor	19mm Capping Only	Each	£3.74

## Plastic Capping

Durable plastic channel for protecting smaller cables installed on poles and walls.

- Supplied pre-drilled
- 992818 Also known as BT Capping 22



Item	Description	Requirement	Max Cable Dia	Colour	Length	Price
992818	Plastic Capping	External Cabling Protector	19mm	Black	2.44Mtr	£3.32
992820	Plastic Capping	External Cabling Protector	42mm	Black	2.44Mtr	£8.77
782629	Plastic Capping	External Cabling Protector	50mm	Black	2.44Mtr	£10.19

## BT Cable Entry Covers

Cable entry cover and capping for running telephone cabling into a premises.

- BT Cover 101A covers cable entry on house wall (Cover dimensions 105mm x 78mm x 28mm)
- BT Capping 25 runs between connector bend 4 & cover 101A to enclose service cable
- BT Connector Bend 4 for use on housing estates to connect duct 102 or duct 56 to cover 101A. Also known as an 'Elephants Foot'



802285



802283



802284



Item	Description	Length	UoM	Price
802285	BT Cover 101A		Each	£6.11
802283	BT Capping 25	500mm	Each	£6.96
802284	BT Connector Bend 4		Each	£6.96



# NEED ASSISTANCE?

01480 415414 (Head Office)

0141 564 1234 (Glasgow)

## External Customer Lead-in Kit 061826

Used to cover, control and protect the fibre optic cable on the outside of the premises as it goes through the wall and connects to the customer box inside the premises.

Kit consists of:-

- 1 x CLI with 15mm bend radius
- 1 x External cover (grey)
- 1 x 300mm Conduit
- 1 x CSP Connector
- Also known as BT 061826



Item	Description	BT Ref	UoM	Price
828447	External Customer Lead In Kit	061826	Set	£5.24

## Internal Customer Lead-in Kit 061825

Used to cover, control and protect the fibre optic cable where it emerges inside the premises. This would typically be used where the customer box is either outside the premises or not directly opposite where the cable comes through the wall from outside.

Kits consists of:-

- 1 x CLI with 15mm bend radius
- 1 x Internal cover (white)



Item	Description	BT Ref	UoM	Price
828448	Internal Customer Lead In Kit	061825	Set	£5.82

## Thick Wall Customer Lead-in Kit 061827

Used in situations where the wall is thicker than 300mm.

Pack consists of:-

- 10 x 500mm Conduit



Item	Description	BT Ref	UoM	Price
828449	Thick Wall Customer Lead In Kit	061827	Pk of 10	£20.86

## Blown Fibre External Customer Lead-in with OH Adaptor 069581

This is a cable entry cover with a 30mm bend radius to allow blowing of the fibre after installation. It includes space for captive gas block and can be used with cable sizes up to 6mm. The kit includes an overhead adaptor for use with overhead cables and fits onto the Capping 25A (802283) or Connector Bend No.4 (802284) when connecting to underground ducting. It can be used in conjunction with the Blown Fibre Internal CLI (828451).

The kits consists of:-

- 1 x External CLI base
- 1 x External CLI cover
- 1 x Overhead adaptor



Item	Description	BT Ref	UoM	Price
828450	Blown Fibre External CLI with OH Adaptor	069581	Set	£5.92

## Blown Fibre Internal CLI Base & Cover 069582

Internal cable entry cover with a 30mm bend radius to allow blowing of the fibre after installation. It can be used with cable sizes up to 6mm and can be used in conjunction with the Blown Fibre External CLI (828450).

Kit consists of:-

- 1 x Internal CLI base
- 1 x Internal CLI cover



Item	Description	BT Ref	UoM	Price
828451	Blown Fibre Internal CLI Base & Cover	069582	Set	£3.78

**ORDER  
ONLINE**  
comtecdirect.co.uk



## Expanding Eyebolts

Single point fixing ring bolt for terminating dropwire.

- Hole size required:  
1A = 8-10mm x 50mm deep, overall length 94mm & ring dia 14mm
- Hole size required:  
2A = 16mm x 95mm deep, overall length 127mm & ring dia 15mm
- Also known as BT Eyebolt Expanding 1A and 2A respectively



Item	Description	Thread Size	Price
993797	Expanding Eyebolt 1A	M6	£0.55
994088	Expanding Eyebolt 2A	M10	£1.05

## Expansion Bolts

Expanding fixings for underground furniture.

- Expansion bolt 1A for fixing manhole steps and cable bearers
- Expanding stud 1A for fixing wall plate No.5 & brackets to walls



Item	Description	UoM	Price
809468	Bolt Expansion 1A	Box of 50	£25.74
809469	Bolt Expanding 2A	Box of 50	£8.28
809467	Stud Expanding 1A	Box of 50	£11.26

## Tait Cranked Combination Spanners



Dual ended combination spanner with cranked angle on the open end.

- Pozi drive
- Bright zinc plate



Item	Description	Size	Price
100006	Cranked Combination Spanner	10mm	£4.15



**Tool Kits Available Online**

## Ultima Countersunk Wood Screws

Ultima

Ultima countersunk twin thread wood screws.

- Countersunk recessed head
- Suitable for wood, plastic and nylon wall plugs
- Pozi drive
- Bright zinc plate



Wall Plugs Available Online

Item	Description	Style	UoM	Price
820150	No. 12 x 1" (25.4mm)	Pozi	Pk of 200	£2.24
820151	No. 12 x 1½" (38.1mm)	Pozi	Pk of 200	£3.09

## Countersunk Wood Screws

Twin thread, countersunk wood screws.

- Countersunk, recessed head
- Suitable for wood and plastic and nylon wall plugs
- Pozi drive
- Bright zinc plate



Item	Description	Style	UoM	Price
813632	No.12 x 2* (51mm)	Pozi	Pk of 100	£2.80

## Pole Step No 1

Steps for use on wooden poles only.



Use Coach Screw M10 993001

Item	Description	BT Ref	UoM	Price
992808	Pole Step	No.1	Each	£2.52

## Ring Pole Head Standoff 1A

Steps Pole No 1 with ring attached to accept various dropwire clamps and helical cable clamps.

- Used on wooden poles
- 100mm ring diameter
- Allows safe passage past Openreach equipment for other providers
- Up to 5 dropwires maximum on joint user poles



Item	Description	BT Ref	UoM	Price
827593	Ring Pole Head Standoff	1A	Each	£5.33

## Dropwire Polehead Rings

Galvanised steel ring for distributing cables from pole tops.

- Allows the fixing of dropwire, drop cable clamps and helical cable clamps
- Bolt diameter 16mm



Item	Description	Ring Dia	Price
992813	Polehead Dropwire Ring	240mm	£7.76

## Coach Screw Brace

This hand held brace is used to attach and remove 3" coach screws used in the fitting of pole steps on poles.

- Easily remove pole steps



Item	Description	UoM	Price
100046	Brace Coach Screw	Each	£26.50

## Pole Probe Tester

Hardened steel 250mm (10") tool used to detect external decay on wooden poles. The spike end is inserted in the pole and can easily and quickly identify areas of rott or decomposition of the pole.

- Includes protective spike cap
- Long lasting tool with comfortable grip



Item	Description	Diameter	Length	Price
789405	Probe Pole Tester	6mm	250mm	£6.50

Can't find what you're looking for?  
Call our sales team on 01480 415414

We have 12,000 products in stock from over 250 leading brands

## ETC Pole Bands and Buckles

Stainless steel band and buckles for securing fittings to poles.

- Reinforced buckles enable quick and effective securing of pole bands
- Bands have high tensile strength and elongation resistance
- Stainless banding (strapping) supplied in handy dispenser



Item	Description	Width	Length	UoM	Price
828417	Stainless Steel Buckle	20mm	-	Pk of 100	£12.13
828393	Stainless Steel Banding	20mm	50Mtr	Each	£26.40

## Protection Sleeve (for Steel Banding)

A protective sleeve designed to protect drop cables from damage from pole head fittings.

- Supplied in a 10m reel to be cut to the required length
- Suitable for 20mm banding



Item	Description	UoM	Price
828403	Sleeve for Stainless Steel Banding	Reel	£8.73

## ETC Strip Shears for Stainless Steel Banding



Shears designed for cutting stainless steel banding and strapping.

- Suitable for use with ETC stainless steel strapping (828393)



Item	Description	Price
829136	Banding Strip Shears	£26.40

## ETC Stainless Steel Strapping & Banding Tools

Stainless steel banding and ratchet banding tools for the attachment of the Universal Pole Bracket (UPB) to wooden and hollow poles.

- Ideal for use on joint user poles where permission cannot be granted to drill a bolt hole through the pole to attach cable fixings

For UPB's  
See Page 36



Item	Description	UoM	Price
826929	Stainless Steel Strapping & Banding Tool	Each	£70.41
828392	Ratchet Pole Banding Tool	Each	£84.18

## Pole Mount Bolts

Hex-head pole mount bolts.

- For attaching Universal Pole Bracket (UPB), Hook Aerial Cable 1 and 1A to wooden poles



Item	Description	Diameter	Length	Price
828394	Pole Mount Bolt Hex Head	M16	300mm	£3.06
828395	Pole Mount Bolt Hex Head	M16	350mm	£4.14

## Aerial Cable Hooks

'J' Shaped steel bracket used to support aerial cables on joint user poles.

- Galvanised steel construction
- Bolt holes provided for securing to poles



Item	Description	UoM	Price
828407	Hook Aerial Cable 1	Each	£3.99
828408	Hook Aerial Cable 1A	Each	£2.64

## Barrel Clamp Terminating Stay Wire

Automatic stay wire wedge clamp for operating stay wire installations.

- Used for terminating the staywire to the universal pole bracket (UPB)
- For diameters 6.1-6.6mm
- The clamp body is manufactured from high strength aluminium alloy and contains a spring loaded jaw



Item	Description	UoM	Price
828416	Barrel Clamp Terminating Stay Wire	Each	£10.28

## Cable Abrasion Protectors

Reduces abrasion of aerial cables when in contact with poles and hardware fittings.

- UV resistant black PVC sections 2mm thick
- Increases the lifespan of cables on poles in windy zones



Item	Description	Other	Length	UoM	Price
828398	Cable Protector 6mm	No. 1	1Mtr	Pk of 20	£67.49
828399	Cable Protector 16mm	No. 2	1Mtr	Pk of 10	£52.60

## Aerial Cable Clamps

Used to support self supporting aerial cable.

- Aerial cable clamp 2 used with self supporting aerial cable 10/0.5, 20/0.5, 5/0.6 and 10/0.6 through pole positions on hollow poles
- Aerial cable clamp 4 used with self supporting aerial cable 50/0.5, 10/0.63, 28/0.63 and 14/0.9 at through pole positions on hollow poles



Item	Description	Length	UoM	Price
828404	Aerial Cable Clamp No.2	914mm	Each	£24.25
828406	Aerial Cable Clamp No.4	1200mm	Each	£26.19

## OPT Over Head Cable Installation Tool



The OPT Over Head Cable Installation Tool, also known as a Hybrid Cable Come Along, is used to hold and aid tension within a cable during installation.

- Securely wraps around the pole with heavy duty chain
- Sturdy carabina to secure and hold tension during installation
- Hard wearing construction of cable grip housing
- Suitable for Hybrid Drop Tube



Item	Description	Mfr Ref	For Use With	UoM	Price
820206	Overhead Cable Grip (Come Along)	T0132	Hybrid Cable	Each	£37.83

## Grip Pulling Tool

Scissor action tool for pulling and holding cables and wires during erection and tensioning.

- Also known as a 'come along' clamp
- Used in the installation of aerial cables



Item	Description	Style	Type	Cable Dia	UoM	Price
700124	Grip Pulling Tool 2A	Aerial Cable	0.7T	4-12mm	Each	£56.50
993092	Grip Pulling Tool 3A	Aerial Cable	0.7T	3-8mm	Each	£49.90

## Tensioner 2B

A tensioning tool used during the erection and recovery of aerial cables.

- Ratchet type tensioning tool
- Sprint latch hooks for secure attachment to cable and pulling equipment



Item	Description	BT Ref	UoM	Price
700119	Tensioner	2B	Each	£59.95

## Dropwire Pulleys

Used in the erection or installation of dropwire cables. Available in two types, both are a one way snatch block type but pulley No.6 incorporates a clam cleat.



200149

790111

Item	Description	BT Ref	SWL	UoM	Price
200149	Dropwire Pulley	No.4	70Kg	Each	£34.58
790111	Dropwire Pulley	No.6	70Kg	Each	£45.59

## Dropwire Brackets

Galvanised steel brackets used in the fixing of drop cables, dropwires to poles or walls. All brackets have a loop to allow the attachment of various drop cable clamps or helical cable clamps.

- All brackets must not exceed cable span distances of 68 metres



992041

992042

827594

827143

Item	Description	BT Ref	Height	Depth	UoM	Price
992041	Triangular Dropwire	Bracket 22	-	-	Each	£0.71
992042	Extended Dropwire	Bracket 32	-	-	Each	£3.78
827594	Extension Dropwire	Bracket 44	420mm	210mm	Each	£7.10
827143	Extension Dropwire	Bracket 51	600mm	350mm	Each	£17.02

## Wall Plate with Thimble

Galvanised steel wall plate for lightweight cables and wires.

- Used to attach cables to brick, pebble dashed or rendered buildings
- Use with expanding wall bolt 1A, page 30



Item	Description	Width	Length	UoM	Price
993027	Wall Plate 5 with Thimble	150mm	100mm	Each	£9.95

## PLP Universal Pole Hardware Bracket



The universal pole hardware (UPH) allows the connection of a double anchoring with helical dead-ends and a suspension with a tangent support.

- Suitable for a wide range of applications
- Fixed on pole with 1x M14 bolt or 2x 20mm stainless steel bands
- Weight 0.21 kg



Item	Description	UoM	Price
828982	Universal Pole Bracket	Each	£3.59

## Universal Pole Bracket

A universal pole bracket suitable for all cable installation configurations on wooden, concrete or metal poles.

- Suitable for a wide range of applications
- Secure using pole bands or bolt directly to pole
- Cast aluminium alloy for strength and corrosion resistance



Item	Description	UoM	Price
828391	Universal Pole Bracket	Each	£3.59

## PLP Drop Fibre Anchoring Clamps



These anchoring clamps have been designed for the new generation of ADSS cables with a micromodule structure. The radial force is distributed over a length with even pressure in order to minimise the strain on the cable and ensure long term performance life of optical fibres.

- Available in a variety of sizes (3-3.9mm, 4.3-5mm and 5.4-6.2mm)



Item	Description	Type	Cable Dia	Band Colour	UoM	Price
828966	Anchoring Clamp	Fibre Dropwire	3-3.9mm	Orange	Pk of 10	£21.63
829087	Anchoring Clamp	Fibre Dropwire	4.3mm-5mm	Blue	Pk of 10	£21.63
829088	Anchoring Clamp	Fibre Dropwire	5.4mm-6.2mm	White	Pk of 10	£21.63

## PLP Dropfibre Dead Ends



Coated stainless steel dead end for fixing aerial fibre drop cables at pole or premises connection points. Clamps are designed to be wrapped around the dropwire not the wire around the clamp.

- 830464 suited to 4F, 12F & 24F for ULW cables from 5.8-6.2mm
- 818157 suited to 36F & 48F ULW cables from 6.8-7.2mm



For  
ULW Fibre  
See Page 44

Item	Description	Cable Dia	Band Colour	UoM	Price
830464	Fibre Optic Dead End	5.8mm-6.2mm	Orange	Pk of 10	£29.55
818157	Fibre Optic Dead End	6.8mm-7.2mm	Purple	Pk of 10	£29.55

## Hypoclamp Aerial Drop Cable Clamp

The Hypoclamp also known as a slippery fish aerial cable clamp, is suitable for use with most flat cables.

- Designed for installation of slippery fish cable, SST COF250 drop fibre cable
- For use on cables deployed on distribution networks with spans up to 70m
- Simple and fast installation that requires no tools
- Installation with zero bend radius constraints
- Mounting on all pole line hardware with closed eye and a min. diameter of 15mm



Item	Description	Cable Type	Cable Dia	Span Distance	UoM	Price
828418	Aerial Drop Cable Clamp, Hypoclamp F	Flat SST, COF250 Cable	4x8mm	Up To 70m Span	Each	£2.20

## Drop Cable Wedge Anchoring Clamps

These drop cable wedge anchoring clamps enable single or double anchoring of round or flat drop cables. Single-piece thermoplastic drop clamp designed with a closed conical body shape and a tailored wedge connected to the body through a flexible link ensuring its captivity and an opening bail for easy installation to pole ring or mounts.

- Cost effective, single-piece plastic design
- Simple and fast installation requires no tools
- Efficient cable grip by conical wedge
- Manual adjustment of the sag by blocking the wedge backwards
- Mounting on all pole line hardware with closed eye and min. diameter of 10mm
- Ideal for use on cross-arms, anchoring hooks, pole brackets and pigtail hook bolts



Item	Description	Cable Type	Cable Dia	Span Distance	Colour	UoM	Price
828452	Drop Cable Wedge Anchoring Clamp	Round Cable	2.5-5mm	Up To 70m Span	Black	Each	£1.99

## Drop Cable Mandrel Clamps

These drop cable mandrel clamps are used for the dead-ending of round and flexible drop cables on poles and facades. The one-piece plastic construction is designed with a mandrel body shape in which cables can be coiled and self-tighten and has an opening bail that enables installation on pole line hardware with a min. diameter of 10mm.

- Cost effective, single-piece plastic with compact design
- Simple fast installation requires no tools
- Unique securing solution for outdoor drop cables with insulated and flexible sheath
- Mounting on all pole line hardware with closed eye and min. diameter of 10mm



Item	Description	Cable Type	Cable Dia.	Span Distance	Colour	UoM	Price
828453	Drop Cable Mandrel Clamp	Round Cable	3-4mm	Up To 70m Span	Black	Each	£1.99
828454	Drop Cable Mandrel Clamp	Round Cable	4-6mm	Up To 70m Span	Black	Each	£1.99

## FTTx Wedge Anchor Clamps

FTTx wedge anchor clamps offer dead-ending of FTTx cables on poles or facades for spans of up to 70m. Particularly recommended for round drop cables from 5mm to 8mm with rigid insulation.

- Simple and fast installation requiring no tools
- Especially designed for round distribution cables
- Suits all field configurations
- Install with zero bend radius constraints
- Mounting on all pole line hardware with closed eye and min. diameter of 15mm



Item	Description	Cable Type	Cable Dia.	Span Distance	Colour	UoM	Price
828422	FTTx Wedge Anchoring Clamp	Round Cable	5-6mm	Up To 70m Span	Black	Each	£4.07
828423	FTTx Wedge Anchoring Clamp	Round Cable	6-8mm	Up To 70m Span	Black	Each	£4.07

## OPT Fibre Locking Mechanism for Ultra-Lightweight Overhead Cables

The Fibre Locking Mechanism (FLM) is a locking mechanism essential for 'loose' jacketed element(s) in an overhead cable. It isolates the termination of the fibres, either spliced or connectorised, in the fibre enclosure from the 'in span' environmental loading (ice and winding).

- Can be attached to a wooden pole with 4x No.8 x 1" countersunk pozi wood screws (820139)
- Designed to form a 'bridge' over other cables fitted to a pole



Item	Description	Other	UoM	Price
820214	Fibre Locking Mechanism	36F & 48F ULW Cable	Each	£6.96



## BESPOKE VAN KITS AVAILABLE

Tailored to your exact  
requirements

Contact us for details

## Prysmian CasaLink Block Terminal (CBT) Closures

**Prysmian**

A Brand of Prysmian Group

Prysmian's CasaLink Block Terminal (CBT) is a pre-connectorised closure for use in the external environment and the ideal solution for pole mount or wall mount fibre distribution.

- Available in 4, 8 and 12 drops/ports
- Compact IP68 rated design
- Quick and easy access, very easy to install
- Supplied pre-terminated with 100Mtrs of ULW fibre cable
- Always comply to PIA rules and procedures when installing cables



827834



827835



827836

Item	Description	Type	Ports	Connector	Mfr ref	Colour	Length	UoM	Price
827834	CasaLink Block Terminal	Pre-Cabled	4 Port	SC/APC	XCPSC03741	Black	100Mtr	Each	£121.99
827835	CasaLink Block Terminal	Pre-Cabled	8 Port	SC/APC	XCPSC03740	Black	100Mtr	Each	£132.27
827836	CasaLink Block Terminal	Pre-Cabled	12 Port	SC/APC	XCPSC03926	Black	100Mtr	Each	£163.41

## Prysmian CasaLink Block Terminal (CBT) Drop Cables

**Prysmian**

A Brand of Prysmian Group

Prysmian's CasaLink Block Terminal (CBT) drop cables have been designed as a single fibre drop cable, pre-terminated at one end with an SC/APC connector. The terminated end is secured in to Prysmian's CBT closures and the bare end spliced in the customer premise or in an external termination box.

- Single fibre ULW PIA approved cable
- Pre-terminated SC/APC connector with shroud and pulling eye
- Supplied on wooden reel for ease of installation
- Available in 20m, 35m, 65m, 105m, 160m and 350m lengths
- Always comply to PIA rules and procedures when installing cables



Item	Description	Type	Connector	Fibre	Mode	Standard	Mfr ref	Length	Price
827838	CasaLink Block Terminal	Drop Cable	SC/APC	1 Fibre	SM	G657A1	XPCSC01138	20Mtr	£53.78
827839	CasaLink Block Terminal	Drop Cable	SC/APC	1 Fibre	SM	G657A1	XPCSC01141	35Mtr	£62.00
827840	CasaLink Block Terminal	Drop Cable	SC/APC	1 Fibre	SM	G657A1	XPCSC01214	65Mtr	£78.32
827841	CasaLink Block Terminal	Drop Cable	SC/APC	1 Fibre	SM	G657A1	XPCSC01215	105Mtr	£101.16
827842	CasaLink Block Terminal	Drop Cable	SC/APC	1 Fibre	SM	G657A1	XPCSC01159	160Mtr	£130.53
827843	CasaLink Block Terminal	Drop Cable	SC/APC	1 Fibre	SM	G657A1	-	350Mtr	£234.96

## Prysmian CasaLink Block Terminal (CBT) Accessories

**Prysmian**

A Brand of Prysmian Group

Accessories designed to aid and ease the installation of the casalink block terminal (CBT) product range.

- Drop cable termination kits for 3mm & 6mm cables so non-proprietary product can be used
- Drop cable connector tool used to loosen and tighten the connector shroud
- Pole strap kits made from stainless steel for extra strength fixing



827846/7



827844



827845

Item	Description	Type	Mfr ref	UoM	Price
827846	CasaLink Block Terminal	Drop Cable Termination Kit 6mm	XKTSC01442	Each	£30.92
827847	CasaLink Block Terminal	Drop Cable Termination Kit 3mm	XKTSC01443	Each	£21.83
827844	CasaLink Block Terminal	Connector Tool	XKTSC01437	Pk of 5	£32.02
827845	CasaLink Block Terminal	Pole Strap Kit	XCPSC03749	Pk of 2	£4.62

## Corning OptiSheath Multipurpose Enclosures (MPE)



A multi-functional in-line closure designed for use in outside plant fibre access networks. This pre-connectorised closure provides sealed environmental protection and fast, easy incremental connection of subscriber drop cables while increasing deployment speed in just the same way as can be achieved using a Corning multiport terminal. However, the MPE sealed terminal has the added advantage of serving as a splice point where higher fibre count distribution cables can be branched to lower fibre count cables or to the stubbed cables of multiport terminals.

- OptiTap cable assembly connector ports for customer drop terminations
- IP68 rated faster deployment either pole or underground application
- Available in 8, 12, or 16 drop port styles
- Suitable for pole mount, wall mount, chamber mount or direct bury installation
- Can be fitted with mini PLC splitter for PON applications
- Supplied with 6x 7-10mm sealed grommet inputs, splice trays and accessories



Item	Description	OptiTap Ports	Splitter	UoM	Price
821620	OptiSheath Multipurpose Enclosure	8x OptiTap Ports	1 x 1:8 Splitter	Each	£148.94

## Corning OptiSheath MultiPort Terminal



Designed for external fibre access networks. Its reliability and flexibility, with incremental subscriber drop ports, make it the ideal choice for FTTx deployments. Supplied in various lengths and pre-terminated with Corning's SST drop cable which is dedicated for installation in conduits, ducts, racks and aerial applications.

- Utilises the OptiTap cable assembly connector port terminals (SC/APC)
- Pre-terminated with Corning SST flat dielectric drop cable
- Available in 4, 8 & 12 drop variations
- Supplied on reel with MOBRA fixing
- Alternate drop lengths available from 1Mtr to 350Mtr

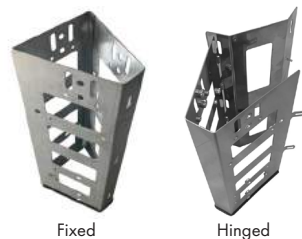


	15Mtr	50Mtr	100Mtr	150Mtr	350Mtr
4 Port	826599	828047	826555	826556	828054
	£100.37	£113.46	£132.11	£150.77	£225.45
8 Port	826600	826548	826549	826558	827980
	£144.21	£161.30	£185.72	£210.14	£307.78
12 Port	826601	828066	826560	826561	827943
	£188.66	£209.62	£239.56	£269.52	£389.31

## Back to Back Hinged CBT Pole Bracket

A bracket to create additional space on the pole for 3x CBT's.

- 2 way bracket is hinged to aid installation
- 3 way bracket can be used on poles or in chamber installations
- Suitable for 4, 8, & 12 Way Corning or CommScope CBT's
- Increase pole footprint allowing up to 36 drop cables from the same space
- Includes 4x 3mm, 8x 4mm and 4x 6mm captive nuts for various CBT fixing points



Item	Description	Other	UoM	Price
828972	2 Way CBT Pole Bracket	Hinged	Each	£34.95
829187	3 Way CBT Pole Bracket	Fixed	Each	£49.95

## Standoff Bracket Multiport/MOBRA

**CORNING**

Multiport CBT standoff bracket allows additional space between surface and CBT.

- Pole and wall mount application
- Also allows mounting of Multiport CBT on a mobra arm (extra materials required)



Item	Description	Type	Colour	UoM	Price
822196	Standoff Bracket	Multiport / MOBRA	Black	Each	£1.28

## Corning FTTx DualDrop OptiTap (UG) Fibre Cables

**CORNING**

Corning's FTTx DualDrop dielectric fibre cables with a factory terminated OptiTap connection at one end have been designed as an underground installation cable and is effectively two cables in one. The design is a 2.9mm FRNC/LSZH drop cable centred inside a rugged outside external cable with a pre-connectorised OptiTap sealed connector. FastAccess technology allows the easy removal of the outer jacket leaving the drop cable to be run internally, eliminating the need for further termination boxes or splices.

- SC/APC OptiTap connector
- ClearCurve singlemode fibre
- Designed for underground application and suitable for direct bury, duct, pole and aerial application
- Supplied on wooden reel
- FastAccess technology for external to indoor transition



Item	Description	Type	Connector	Fibre	Mode	Standard	Sheath	Length	Price
828075	FTTx DualDrop	OptiTap Cable	SC/APC	1 Fibre	SM	G657B3	Ext & Cca	33Mtr	£45.72
828077	FTTx DualDrop	OptiTap Cable	SC/APC	1 Fibre	SM	G657B3	Ext & Cca	65Mtr	£65.71
828079	FTTx DualDrop	OptiTap Cable	SC/APC	1 Fibre	SM	G657B3	Ext & Cca	105Mtr	£90.65
828080	FTTx DualDrop	OptiTap Cable	SC/APC	1 Fibre	SM	G657B3	Ext & Cca	160Mtr	£124.96

## Corning ROC OptiTap Drop Cables

**CORNING**

Corning's ROC Aerial Drop fibre cables with factory terminated OptiTap connection at one end have been designed as an aerial, pole drop cable. FastAccess technology allows the easy removal of the outer jacket reducing preparation time for splicing and terminating.

- SC/APC OptiTap connector
- ClearCurve singlemode fibre
- Designed for aerial and pole application
- Supplied in card boxes
- FastAccess technology for reduced preparation time



Item	Description	Type	Connector	Fibre	Mode	Standard	Length	Price
826551	ROC Drop	OptiTap Cable	SC/APC	1F	SM	G657A2	35Mtr	£32.76
826562	ROC Drop	OptiTap Cable	SC/APC	1F	SM	G657A2	65Mtr	£44.57
826553	ROC Drop	OptiTap Cable	SC/APC	1F	SM	G657A2	105Mtr	£60.31
826563	ROC Drop	OptiTap Cable	SC/APC	1F	SM	G657A2	160Mtr	£81.97

## Corning Fibre Sheath & Buffer Stripper CORNING

Precision tool for easy and precise stripping of primary and secondary coating.

- Insert wire in front hole, squeeze handle and strip with no nicking
- Blue is for primary 250µm coating removal



Item	Description	Mfr ref	UoM	Price
828509	SST-Drop Cable Access Tool	FDST-000	Each	£51.14

## Commercial or Residential MDU, we have you covered

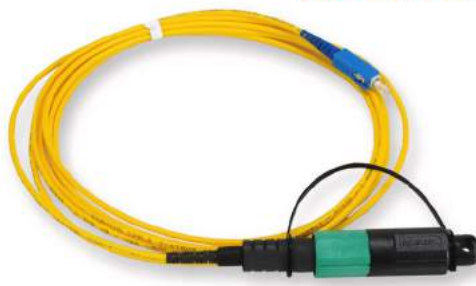
Call 01480 415414



## Corning OptiTap Test Jumper CORNING

Enables direct connection to optical power meters for in-field testing.

- Environmentally sealed connector housing permits rapid connection to external flush-mounted bulkhead adapters on terminals or closures



Item	Description	Type	Mode	Connectors	Standard	Core Size	Sheath	Diameter	Colour	Length	Price
813460	OptiTap Test Jumper	Simplex	SM	SC-SC/APC	OS2	9/125	LSZH	2.9mm	Yellow	3Mtr	£49.74
820701	OptiTap Test Jumper	Simplex	SM	SC-SC/APC	OS2	9/125	LSZH	2.9mm	Yellow	10Mtr	£68.59

## Prysmian Hybrid Drop Box (HDB4)

The wall mounted Prysmian Hybrid Drop Box (HDB4) is used for the splicing of up to 4 fibres and up to four customer drop cables.

- Added feature of a copper storage area to accommodate hybrid cables
- Capacity for up to 4 splices and can accommodate cables from 3mm to 7mm in diameter
- Box supplied with an extra knock-out port on the back to allow for 'through' wall applications
- Can be installed on a wall (fixtures included) or onto standard 'Connector Bend 4' system to hide primary cable routings
- Supplied with two 3-7mm single input cable seals and two double cable drop port kits
- Can accommodate two SC Simplex adaptors or two LC Duplex adaptors
- Supplied with everything to install one input cable and four drop cables, except splice protectors
- IP55 rated - suitable for internal or external use

**Prysmian**

A Brand of Prysmian Group



Shown with SC for reference

Item	Description	Type	Other	Mfr Ref	Price
828149	Hybrid Drop Box (HDB4)	2x LC/APC Dx	C/w Adaptors & Pigtails	XCPSC03044	£30.91
820510	Hybrid Drop Box (HDB4)	2x SC/APC Sx	C/w Adaptors & Pigtails	XCPSC03043	£16.92
820509	Hybrid Drop Box (HDB4)	Splice Only	-	XCPSC03029	£9.81

## HellermannTyton Fibre Wall Outlets



HellermannTyton fibre wall outlets are manufactured from ABS plastic and have been design with tamperproof latches securing the cover to the base. The FWO range is supplied with a 2 fibre G657A1 10Mtr cable with 1 core pre-terminated with an LC/APC connector.

- Fitted with 1x LC/APC duplex fibre adaptor
- Includes 10Mtr 2 fibre pre-terminated G657A1 cable with 1x LC/APC connector
- Direct installation on wall or onto a flush-mount back box
- Tamperproof latches
- Fibre management to ensure 30mm min bend radius



Item	Description	Ports	Cable Type	Termination	Mfr ref	Price
828150	Pre-Terminated Fibre Wall Outlet	1x Duplex LC/APC Adaptor	2F G657A1	1F LC/APC	FWOA-AXW21-010/WH	£23.64

## HellermannTyton External Fibre Optic Enclosures



HellermannTytons external enclosures are suited to fibre optic termination, distribution and consolidation installations. These include Customer Connection Points (CCP), customer enclosures and Multi Dwelling Units (MDU/MBU) enclosures. These ranges are suited to FTTx installations and deployed within the last mile of the FTTx networks.

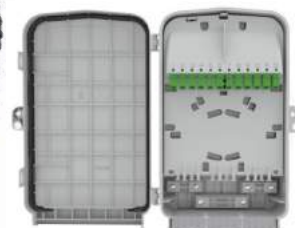
- Customer connection enclosures are rated to IP68 and designed as a building entry point
- MDU/MBE enclosures are rated to IP55 and designed for last mile network deployment
- Contain suitable cable management to maintain correct bend radius of fibres



828157



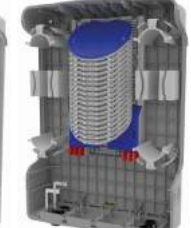
828158



828166



828167



828168

Item	Description	Type	Other	Mfr Ref	Price
828157	Customer Connection Point (CCP)	1x LC/UPC Dx	C/w 2x LC OS2 Pigtails	CCPA-M1111LP/BK-0	£14.40
828158	Customer Connection Enclosure	LC/APC	C/w 1x LC/APC Dx Adaptor & Pigtail	CCE-A11121A11/BK	£19.23
828166	S1 Series MDU/MBU Enclosure	LC/APC	C/w 12x LC/APC Sx Adaptor & Pigtail	MDU-S1-03LC12RA1	£119.18
828167	S3 Series MDU/MBU Enclosure	Splice Only	96F Capacity	MDU-S3-BXN	£96.26
828168	S5 Series MDU/MBU Enclosure	Splice Only	432F Capacity	MDU-S5-LLXN	£296.16

## Prysmian Ultra Lightweight (ULW) Fibre Optic Aerial Drop Cable

**Prysmian**

A Brand of Prysmian Group

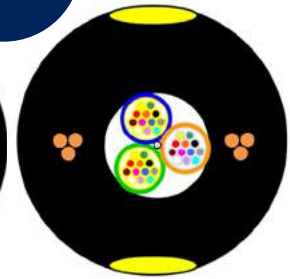
Designed as an ultra lightweight (ULW) cable for mid to long span aerial applications. It is suitable for aerial and/or duct applications and can be used with power cables under 11kV rating.

- For use on the PIA network
- Singlemode G657A1 fibre
- Brass plated steel wire strength members
- Max breaking load: 4F to 24F 1800N - 36F & 48F 2000N
- Up to 68m span distance (ice and wind variable)
- Available in multiple fibre options
- For 4F, 12F or 24F ULW use drop fibre anchoring clamps, 830464
- For 36F & 48F ULW use drop fibre dead end clamp, 818157

**For Clamps**  
see page 36-38



Loose Tube



Multi-Loose Tube

Item	Description	Construction	Mode	Fibres	Sheath	Diameter	Colour	UoM	Price
829813	Fibre Optic Aerial Drop Cable	ULW Loose Tube	SM	4F	HDPE	6mm	Black/Yellow	Mtr	£0.32
821669	Fibre Optic Aerial Drop Cable	ULW Loose Tube	SM	12F	HDPE	6mm	Black/Yellow	Mtr	£0.43
829677	Fibre Optic Aerial Drop Cable	ULW Multi-Loose Tube	SM	24F	HDPE	6mm	Black/Yellow	Mtr	£0.60
828340	Fibre Optic Aerial Drop Cable	ULW Multi-Loose Tube	SM	36F	HDPE	7mm	Black/Yellow	Mtr	£0.72
821670	Fibre Optic Aerial Drop Cable	ULW Multi-Loose Tube	SM	48F	HDPE	7.1mm	Black/Yellow	Mtr	£0.90

## Prysmian OS2 Fibre Cables - External Blown Fibre

**Prysmian**

A Brand of Prysmian Group

Prysmian's range of external HDPE sheathed fibre cable for blown duct installations.

- HDPE external grade sheath
- Multi-loose tube construction for high core counts
- Suitable for blown fibre installations
- G657A1 singlemode fibre

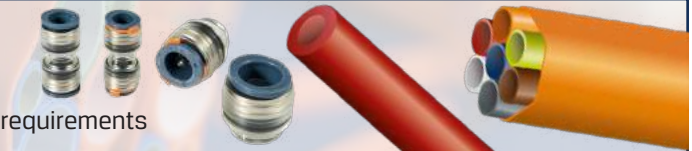


Item	Description	Mode	Fibres	Type	Core Size	Sheath	Diameter	Colour	UoM	Price
829145	Micro Blown Fibre Cable	SM OS2	48F	G657A1	250µm	HDPE	5mm	Black	Mtr	£0.69
829146	Micro Blown Fibre Cable	SM OS2	96F	G657A1	250µm	HDPE	5.8mm	Black	Mtr	£1.03
829147	Micro Blown Fibre Cable	SM OS2	144F	G657A1	250µm	HDPE	8.5mm	Black	Mtr	£1.86
829148	Micro Blown Fibre Cable	SM OS2	288F	G657A1	250µm	HDPE	10.8mm	Black	Mtr	£3.46
830123	Micro Blown Fibre Cable	SM OS2	144F	G657A1	200µm	HDPE	5.8mm	Black	Mtr	£2.07
830124	Micro Blown Fibre Cable	SM OS2	192F	G657A1	200µm	HDPE	6.8mm	Black	Mtr	£3.17
830125	Micro Blown Fibre Cable	SM OS2	288F	G657A1	200µm	HDPE	9.1mm	Black	Mtr	£4.06



**Comtec, a Dura-Line partner**

Call 01480 415414 for your microduct requirements



## Prysmian OS2 Fibre Cable - External Duct

**Prysmian**

A Brand of Prysmian Group

Prysmian's range of external HDPE sheathed fibre cable for push/pull duct installation.

- HDPE external grade sheath
- Multi-loose tube construction for high core counts
- Suitable for traditional push/pull installations
- G652.D singlemode & G657.A1 singlemode OS2 fibre



Item	Description	Construction	Mode	Fibres	Type	Core Size	Sheath	Diameter	Colour	UoM	Price
829149	Duct Fibre Cable	Multi-Loose Tube	SM OS2	96F	G652SD	250µm	HDPE	12.8mm	Black	Mtr	£1.18
830296	Duct Fibre Cable	Multi-Loose Tube	SM OS2	48F	G657A1	250µm	HDPE	7.9mm	Black	Mtr	£0.67
830298	Duct Fibre Cable	Multi-Loose Tube	SM OS2	96F	G657A1	250µm	HDPE	9.8mm	Black	Mtr	£1.11
830299	Duct Fibre Cable	Multi-Loose Tube	SM OS2	144F	G657A1	250µm	HDPE	12.1mm	Black	Mtr	£1.72
830300	Duct Fibre Cable	Multi-Loose Tube	SM OS2	288F	G657A1	250µm	HDPE	15mm	Black	Mtr	£3.21

**INNO Splicers**  
Available Online



**INNO** INSTRUMENTS | you dream. we DESIGN

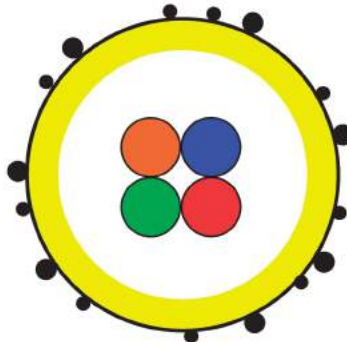
## Prysmian Blown Fibre OS2

**Prysmian**

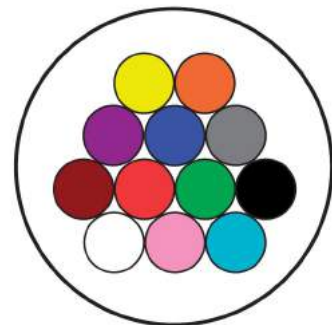
A Brand of Prysmian Group

Colour coded outer layer identifies the grade of in the unit.

- Blowing distances up to 1000m (750m for 12 core)
- Fibres already installed can be removed and replaced with a higher fibre count
- Once removed, the fibres can be re-used at another site



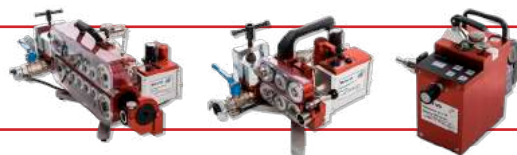
829266



809518

Item	Description	Mode	Fibres	Diameter	UoM	Price
829266	Blown Fibre Unit (EPFU)	SM OS2	4F	1mm	Reel of 2000Mtr	£305.50
809518	Blown Fibre Unit (EPFU)	SM OS2	12F	1.3mm	Reel of 2000Mtr	£761.40

**Jetting Blowing Machines**  
Available Online



**JETTING**  
By Fibre Systems for Fibre Experts

## Splicers Portable Work Tray

A portable work tray complete with fully adjustable tripod for set up in any location. Ideal for splicers and small blown fibre units.

- 3 Fully adjustable tripod legs
- Raised edges to avoid items spilling of the edge of table
- Recessed cut-outs holders, ideal for Isopropyl dispensers
- Rubberised mat for extra grip work surface
- Cut-outs for the fusion splicer to be screwed in place



Item	Description	UoM	Price
828413	Splicer Tray & Tripod	Each	£185.00

## X Board 500 Cable Dispenser

The X-BOARD XB500 is a universal device for winding in/out cable drums. Suitable for all types of cables and pipes (single core lines, cable rings, cable drums, empty conduits, ropes and rope drums), it enables trouble-free and efficient working without the tangled cables. Especially ideal for damaged cable drums.

- Load bearing capacity 800Kg
- Rubberised feet ensure a non-slip and secure standing position whilst protecting completed flooring surfaces
- Weight 6.94Kg (For standard XB500)
- Height 133mm
- Diameter 500mm
- Optional 750mm pole extender (822855)
- Standard X-Board XB500 - Without spring loaded arms (816872)
- Modified X-Board XB500+ - With spring loaded arms (828703)



Item	Description	Mfr Ref	UoM	Price
816872	X-Board Cable Dispenser	XB500	Each	£205.00
828703	X-Board Cable Dispenser with Sprung Arms	XB500+	Each	£334.65
822855	X-Board Pole Extender	XBPE	Each	£65.77

## Corning BT Drop Reusable Drum Set

Reusable cable drums for use with Corning CBT drop cables.

- Ideal for 'coil in a box' drop cables from Corning
- Saves material waste and disposal of wooden reels
- Can be used with Corning ROC drop & dual drop fibre cables



**CORNING**

Item	Description	UoM	Price
827920	Corning BT Drop Reusable Drum Complete Set	Each	£170.26

## Drawrope & Dropwire Dispensers

Dispensers ideal for dispensing drawrope and dropwire.

- BT Dispenser 1 - Tubular steel framed dropwire dispenser with an adjustable tensioning device to prevent over-run of the drum. The drum is held by means of a spring loaded spindle
- BT Dispenser 2B - Features an adjustable tensioning device to avoid over-run of the drum



992045



992044

Item	Description	UoM	Price
992045	Dropwire Dispenser 1	Each	£54.00
992044	Dropwire Dispenser 2B	Each	£59.51

## Sash Line Dispenser

Sash line dispenser incorporates a revolving drum on a spindle.

- Also known as BT Dispenser Sash line



Item	Description	UoM	Price
200054	Sash Line Dispenser	Each	£14.50

## Sash Line

Poly rope for lightweight cabling work.

- 1x reel of 132Mtrs (formerly 4 hanks x 33Mtrs)
- Also known as BT Sash Line 2



Item	Description	BT Ref	Diameter	Length	Price
782615	Sash Line	No.2	4mm	132Mtr	£29.95

## Horse Pole

Tripod used to support poles during dressing.

- Safety locking pin
- Folds flat



Item	Description	UoM	Price
600046	Pole Horse	Each	£64.02

## Twister Pole

Used to turn poles after installation.

- Plate type



Item	Description	UoM	Price
600080	Twister Pole	Each	£64.02

## Long Handled Pole Turners

Hand operated long handled pole turner for the alignment of poles after installation.

- Forged handle with teeth at the front edge giving better grip to the pole



Item	Description	Other	UoM	Price
825629	Lever Pole Turner	Long Handled	Each	£85.00

## Ladder Ties

BT style ladder accessory.

- Used to lash ladders extension 5B and 7A when working on poles



Item	Description	UoM	Price
200119	Ladder Tie	Each	£3.60

## Pole Belt 1B

Pole belt to tie off sash lines at the base of a pole.

- Also known as BT Belt Pole 1B
- Used with BT Dropwire Dispensers (992044/992045)



For  
BT Dropwire  
Dispensers  
See Page 47

Item	Description	BT Ref	UoM	Price
789403	Pole Belt	1B	Each	£30.55

## Rigging Head 1A

Rigging head for installing rigging lines in hollow poles. This tool is used by screwing the head on to Rod Duct No.2 and pushing the rod up the inside of a hollow telegraph pole. Weighted draw rope can then be installed to allow cable to be pulled through.



Item	Description	UoM	Price
804384	Rigging Head 1A	Each	£17.46

## Rigging Weight 1A

Sash weight for use with Rigging Head 1A.

- 0.8Kg
- Supplied with a metal clip



Item	Description	BT Ref	UoM	Price
200152	Rigging Weight	1A	Each	£6.39

## Sling Wire Rope 1A

Used for handling wooden poles in conjunction with pole erection units.

- Galvanised steel wire rope lifting sling
- Reeving thimbles on each end
- Length: 1.4m



Item	Description	Other	UoM	Price
817887	Sling Wire Rope	1A	Each	£29.88

## Pole Jack

Hand operated jack for shifting, straightening or recovering poles.

- Rack & panel mechanism
- 5000kg capacity
- To be used in conjunction with Pole Jack Chain



Item	Description	UoM	Price
700262	Pole Jack	Each	£2400.75

## Working at Height Equipment Available Online



## Pole Jack Chain

High tensile link chain for use with Pole Jack.



Item	Description	UoM	Price
700093	Pole Jack Chain	Each	£240.08

## Chain Puller

Pump action ratchet chain winch for moving heavy loads and tensioning cables.

- Safety brake incorporated
- Load can be maintained in any position



Item	Description	Capacity	Lift Height	Price
828424	Chain Puller	3 Tonne	1.5Mtr	£218.35

## Strap Temporary Hold No.1

Used with Hook Temporary Hold No.2.

- Supplied with a ratchet buckle



Item	Description	UoM	Price
200320	Strap Temporary Hold No.1	Each	£10.67

## Hook Temporary Hold No.2

A temporary cable support when erecting and tensioning aerial cables.

- Supplied complete with strap



Item	Description	UoM	Price
200107	Hook Temporary Hold No.2	Each	£43.65

## Tensioning Strap 1A

45mm Webbing strap, terminated with a 90 degree twist snap hook, used with Tensioner 3A for securing poles.



Item	Description	Width	Length	Price
821829	Tensioning Strap 1A	45mm	3Mtr	£25.85

## Tensioning Strap 2A

45mm webbing strap with a D buckle used for securing poles on pole erection units.



Item	Description	Width	Length	Price
809582	Tensioning Strap 2A	45mm	6Mtr	£15.51

## Tensioning Strap 3A

A ratchet tensioner fitted with a snap hook and anchor strap. Used with Tensioning Straps 1A & 2A.



Item	Description	UoM	Price
788469	Tensioning Strap 3A	Each	£31.02

## Lifting Slings

Lifting slings for working at height.

- 4A, 5A & 6A are flat webbing slings
- 10A is used for lifting & handling hollow pipes



200199 - 4A



821758 - 5A



821760 - 6A



200197 - 10A

Item	Description	BT Ref	Safe Working Load	Length	UoM	Price
200199	Lifting Sling	4A	1000Kg	1Mtr	Each	£6.16
821758	Lifting Sling	5A	1000Kg	2Mtr	Each	£9.75
821760	Lifting Sling	6A	1000Kg	3Mtr	Each	£12.61
200197	Lifting Sling	10A	1000Kg	3Mtr	Each	£9.73

# Prysmian

---

A Brand of Prysmian Group

## Linking digital connectivity to real connection

Living and working digitally is the new normal. For network operators this means managing a near exponential increase in bandwidth demand.

At Prysmian, we design, and manufacture proven optical cable and connectivity to enable you to quickly deploy aerial and underground systems utilising PIA.

Our full FTTX product range is stocked by Comtec including Ultra Lightweight, blown, microblown and duct optical cables, our innovative Casalink Block Terminal (CBT) System and our extensive range of optical closures (XMJ) and connectivity solutions.



### UK/Europe

[www.comtecdirect.co.uk](http://www.comtecdirect.co.uk)

#### Comtec Huntingdon

Head Office and Main Distribution Centre  
Cardinal Way  
Cardinal Distribution Park  
Godmanchester  
Huntingdon  
England  
PE29 2XJ  
Phone: +44 (0)1480 415414  
Email: [fttxsales@comtecdirect.co.uk](mailto:fttxsales@comtecdirect.co.uk)

#### Comtec Glasgow

Trade Counter & Sales Office  
20 Couper Street  
Glasgow  
G4 0DL  
Phone: +44 (0)141 564 1234  
Email: [glasgow@comtecdirect.co.uk](mailto:glasgow@comtecdirect.co.uk)

### Middle East

[www.comtecdirect.me](http://www.comtecdirect.me)

#### Comtec UAE

Sales Office  
Office 307  
PO Box 75633  
Building 6  
Bay Square  
Business Bay  
Dubai, UAE  
Phone: +971 4551 0677  
Email: [uae@comtecdirect.me](mailto:uae@comtecdirect.me)

#### Comtec Oman

Trade Counter & Sales Office  
PO Box 2074  
Postal Code 133  
Al Khuwair, Muscat  
Sultanate of Oman  
Phone: +968 22 0111 22  
Email: [oman@comtecdirect.me](mailto:oman@comtecdirect.me)

#### Comtec Qatar

Trade Counter & Sales Office  
Units 40 - 44  
PO Box 82281  
Building 11  
Barwa Village  
Doha  
Qatar  
Phone: +974 44 3535 86  
Email: [qatar@comtecdirect.me](mailto:qatar@comtecdirect.me)

### Far East

[www.comtecdirect.co.uk](http://www.comtecdirect.co.uk)

#### Comtec Hong Kong

Trade Counter & Sales Office  
Unit 1101A, 11/F Sunbeam Centre  
27 Shing Yip Street  
Kwun Tong  
Kowloon  
Hong Kong  
Phone: +852 2311 2263  
Email: [sales@comtec-comms.com.hk](mailto:sales@comtec-comms.com.hk)

# FTTx Engineering Catalogue

PIA Installers, Contractors & Network  
Build Engineers/Operators

Order online at [comtecdirect.co.uk](http://comtecdirect.co.uk)  
Call 01480 415414

