

COMTEC ▶

COMMScope®

AMP NETCONNECT® | KRONE®

# PRODUCT BOOK

CommScope has acquired TE Connectivity's  
telecom, enterprise and wireless business



## About CommScope

---

CommScope (NASDAQ: COMM) helps companies around the world design, build and manage their wired and wireless networks.

Their network infrastructure solutions help customers increase bandwidth; maximise existing capacity; improve network performance and availability; increase energy efficiency; and simplify technology migration. You will find their solutions in the largest buildings, venues and outdoor spaces. Vital networks around the world run on CommScope solutions.

## Warranty

---

### CommScope 25 Year Warranty

There are many structured cabling warranties available on the market today but only the CommScope Warranty provides all of this in one package.

### The CommScope 25 Year System Warranty provides cover on the complete cabling system

- Comprises cable, connectors, connecting hardware and patch cords
- Covers defects in either materials or workmanship for the full 25 years
- Ensures that all signal carrying components meet the prescribed mechanical and transmission specifications for these products
- Includes repair or replacement of defective products — at CommScope's cost
- Includes the labour cost

### Direct to end user

The CommScope Warranty is a contract made directly between Commscope and the customer.

How It Works:

1. End user selects CommScope Cabling system
2. End user selects ND&I program installer
3. ND&I installs, tests and documents the cabling system
4. ND&I provides defined project documentation and test results to CommScope
5. CommScope grants warranty to end user

---

# YOUR NETWORK RUNS ON COMMSCOPE™

---



## Ordering Information

### Dedicated CommScope Product Manager

At Comtec we have a dedicated CommScope Product Manager, Andy Murray, at your service. Andy worked at TE Connectivity for 20 years before joining Comtec last year and brings with him a wealth of AMP NETCONNECT and KRONE product knowledge and experience to support you in your CommScope projects.

### Stock and Availability

At Comtec we carry a significant stock holding of both AMP NETCONNECT and KRONE products. Orders can be placed via telephone or online for next day delivery.

### Head Office

Orderphone: 01480 415400

Email: [sales@comtecdirect.co.uk](mailto:sales@comtecdirect.co.uk)

### Scotland

Orderphone: 0141 564 1234

Email: [glasgow@comtecdirect.co.uk](mailto:glasgow@comtecdirect.co.uk)

### Online

[www.comtecdirect.co.uk](http://www.comtecdirect.co.uk)



**FREE**  
NEXT DAY DELIVERY  
on orders over **£150**

## Contents

### Structured Cabling

KRONE Cat5e, Cat6, Cat6a Solutions .....	4
AMP Netconnect Cat5e, Cat6, Cat6a, Cat7, Cat7a Solutions .....	13

### Installer Terminated Fibre Optic Cabling

KRONE Fibre Optic Cabling .....	24
KRONE Blown Fibre .....	26
KRONE FiberGuide® .....	30
AMP Netconnect Fibre Optic Cabling .....	36
Epoxy and Polish Connectors .....	43
Lightcrimp .....	44

### Pre Terminated Fibre Solutions

MPO and MPOptimate .....	48
--------------------------	----

### Voice Cabling

Designation and Connection Strips .....	52
Connection and Test Cords .....	53
Internal and External Box Connections .....	55

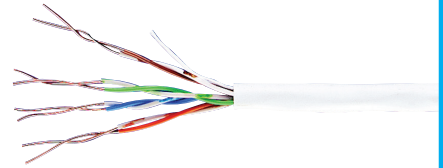
### Cabinets and Accessories

Cable Management Panels .....	57
NETpodium Racks .....	58

### KRONE Cat5e U/UTP Data Cable

Four pair copper cable part of the impedance matched CommScope structured cabling system

- Performance exceeding Cat5e specifications up to 100MHz
- Finely tuned to impedance match with other KRONE Cat5e connectivity
- Fully interoperable and backwards compatible
- Third party certification at a component level



COMMSCOPE®

KRONE®

Item	Man. Code	Description	Category	Type	Sheath	No. of Pairs	NVP Rating	Outer Dia	Colour	Length	UoM
776626	0-57535-5	Solid	Cat5e	U/UTP	PVC	4 Pair	67%	5.0mm	Grey	305Mtr	Box Of 305mtr
776625	1-57538-9	Solid	Cat5e	U/UTP	LSZH	4 Pair	67%	5.0mm	Orange	305Mtr	Box Of 305mtr

### KRONE Cat5e F/UTP Data Cable

Four pair copper cable, part of the impedance matched CommScope structured cabling solution

- Performance exceeding Category 5e specifications up to 100MHz
- Ensures zero-bit errors, removing the need for Ethernet to re-transmit data packets and ensures data integrity
- Maximum throughput, reliability and performance in your IT network
- Covered by the CommScope System Warranty



COMMSCOPE®

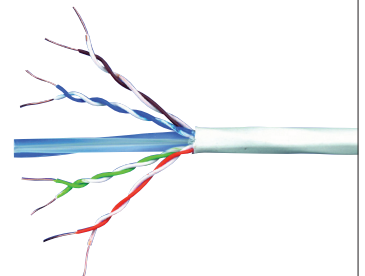
KRONE®

Item	Man. Code	Description	Category	Type	Sheath	No. of Pairs	NVP Rating	Outer Dia	Colour	Length	UoM
778211	2-219420-3	Solid	Cat5e	F/UTP	LSZH	4 Pair	71%	6.3mm	Orange	305Mtr	Box Of 305mtr

### KRONE Cat6 U/UTP Data Cable

Four pair copper cable, part of the impedance matched CommScope structured cabling solution

- Performance exceeding Cat6 specifications up to 250MHz
- Finely tuned to impedance match with other KRONE Cat6 connectivity
- Fully interoperable and backwards compatible
- Third party certification at a component level



COMMSCOPE®

KRONE®

Item	Man. Code	Description	Category	Type	Sheath	No. of Pairs	NVP Rating	Outer Dia	Colour	Length	UoM
776628	7-219584-5	Solid	Cat6	U/UTP	PVC	4 Pair	69%	5.5mm	Grey	305Mtr	Box Of 305mtr
776627	7-219585-6	Solid	Cat6	U/UTP	LSZH	4 Pair	69%	5.5mm	Orange	305Mtr	Box Of 305mtr
786849	2171028-1	Solid	Cat6	U/UTP	PE External	4 Pair	69%	6.6mm	Black	305Mtr	Reel Of 305mtr

## KRONE Cat6 F/UTP Data Cable

Four pair copper cable, part of the impedance matched CommScope structured cabling solution

- Performance exceeding Category 6 specifications up to 250MHz
- Ensures zero-bit errors, removing the need for Ethernet to re-transmit data packets and ensures data integrity
- Maximum throughput, reliability and performance in your IT network
- Covered by the CommScope System Warranty



**COMMSCOPE®**

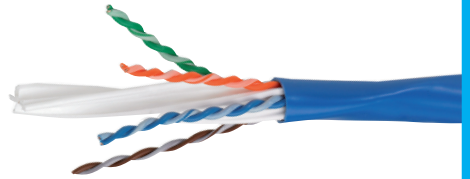
KRONE®

Item	Man. Code	Description	Category	Type	Sheath	No. of Pairs	NVP Rating	Outer Dia	Colour	Length	UoM
778477	9-1427213-5	Solid	Cat6	F/UTP	LSZH	4 Pair	72%	6.9mm	Orange	500Mtr	Reel Of 500mtr

## KRONE Cat6a U/UTP Data Cable

Four pair copper cable, part of the impedance matched CommScope structured cabling solution

- Patented technology to minimise the effects of alien cross talk and insertion loss
- Supports 10Gigabit Ethernet over unshielded copper to a full 100m up to 500MHz
- Fully interoperable and backwards compatible with component compliant Cat5e/Class D and Cat6/Class E systems
- Maximises productivity levels with 10 times the data throughput



**COMMSCOPE®**

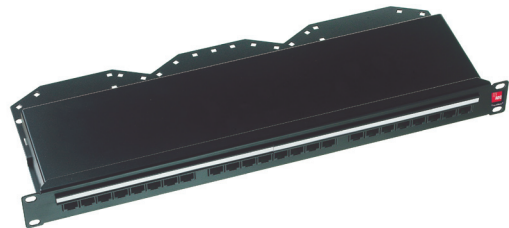
KRONE®

Item	Man. Code	Description	Category	Type	Sheath	No. of Pairs	NVP Rating	Outer Dia	Colour	Length	UoM
775633	0-2171014-1	Solid	Cat6a	U/UTP	LSZH	4 Pair	67%	7.6mm	Blue	305Mtr	Reel Of 305mtr

## KRONE Cat5e Right Angle Patch Panels

Designed to minimise deployment time and maximise strength

- PCB punchdown blocks for swift, efficient terminations
- Third party certification at a component level
- Covered by the CommScope system warranty



**COMMSCOPE®**

KRONE®

Item	Man. Code	Description	Category	Type	Ports	Orientation	Height	Width	Colour	UoM
771402	6527 1 607-24	Patch Panel	Cat5e	Unshielded	24Port	Right Angle	1U	19"	Black	Each
771841	6527 1 630-00	Patch Panel	Cat5e	Unshielded	48Port	Right Angle	1.5U	19"	Black	Each
771842	7022 1 015-24	Patch Panel	Cat5e	Shielded	24Port	Right Angle	1U	19"	Black	Each

## KRONE Cat6 Rear Punch Patch Panel

KM8 modular patch panels offers complete flexibility and high port density

- Performance exceeding Cat6 specifications up to 250MHz
- Expansive cable management, full fixing kit and twin level labelling
- Third party certification at component level
- Covered by the CommScope system warranty



COMMSCOPE®

KRONE®

Item	Man. Code	Description	Category	Type	Ports	Orientation	Height	Width	Colour	UoM
798171	6653 1 679-24	Patch Panel	Cat6	Unshielded	24Port	Rear Punch	1U	19"	Black	Each

## KRONE Cat6a Rear Punch Patch Panels

Supports 10 Gigabit Ethernet over unshielded copper to a full 100m up to 500MHz

- Third party certification at a component level
- Covered by the CommScope system warranty
- Rapid and reliable punch down performance and cable management
- Integrated cable management and swivel fascia facility



COMMSCOPE®

KRONE®

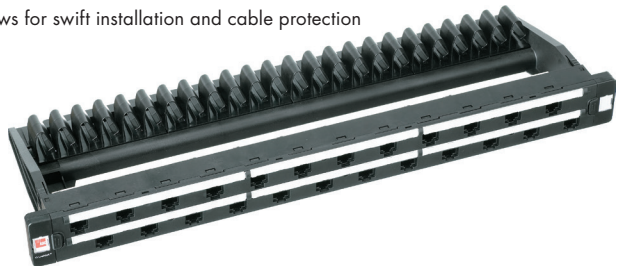
Colour: Black

Item	Man. Code	Description	Category	Type	Ports	Orientation	Height	Width	UoM
779984	6527 1 810-24	Patch Panel	Cat6a	Unshielded	24Port	Rear Punch	1U	19"	Each

## KRONE Cat6a PLM Upgradeable Rear Punch Patch Panels

Passive upgradeable 24 port Cat6a patch panel

- Supports 10 Gigabit Ethernet over unshielded copper to a full 100m up to 500MHz
- True future proofing for tomorrows network applications
- Innovative and integrated cable management system allows for swift installation and cable protection



COMMSCOPE®

KRONE®

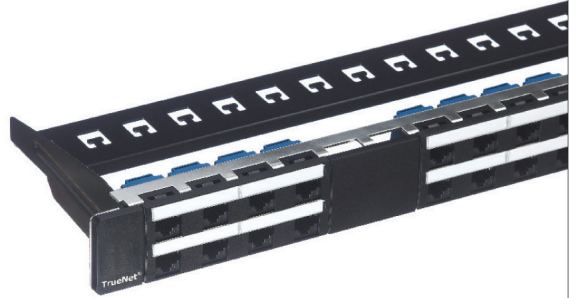
Colour: Black

Item	Man. Code	Description	Category	Type	Ports	Orientation	Upgradeable	Height	Width	UoM
775625	6527 1 743-00	Patch Panel	Cat6a	Unshielded	24Port	Modular	PLM Upgradeable	1U	19"	Each

## KRONE CopperTen Unloaded Patch Panels

KM8™ unloaded modular patch panels

- Suitable for Cat 6 KM8 UTP and STP Jacks and Cat 6A STP Jacks
- Expansive cable management, full fixing kit, and one strip labelling
- Covered by CommScope System Warranty



KRONE®

Colour: Black

Item	Man. Code	Description	Category	Type	Ports	Orientation	Rear Cable Man	Height	Width	UoM
778481	7022 2 155-24	Patch Panel	Unloaded	Shielded	24Port	Modular KM8	With Rear Cable Management	1U	19"	Each

## KRONE KM8 Termination Tool

Tool for terminating KM8 style Cat6 jacks

- For swift terminations of KM8 jacks
- Hundreds of jack terminations from one tool



KRONE®

Colour: Black

Item	Man. Code	Description	Type	UoM	Price
778079	6830 1 490-00	Termination Tool	KM8	Each	£3.90

# ORDER ONLINE

[comtecdirect.co.uk](http://comtecdirect.co.uk)

## KRONE Unloaded Patch Panels

Cat6a modular unloaded Q panel for high performing Q jacks

- Modular panel offers complete flexibility
- Compliant with Cat6a standard at component level
- Integral cable management bar
- 45 degree IDC contacts providing secure, gas tight connections
- Accepts 110 style termination tools
- Universal 568A or 568B wiring
- Discrete labelling systems

Cat6a Q Jacks  
Page 17



KRONE®

Colour: Black

Item	Man. Code	Type	Ports	Orientation	Rear Cable Man	Height	Width	UoM
790480	1-1671607-0	Unshielded/Shielded	24Port	Modular Q-jack	With Fixed Rear Cable Management	1U	19"	Each

## KRONE Voice Patch Panels

Designed to integrate voice circuits into standard structured cabling systems

- Expansive cable management for maximum cable protection
- Innovative sliding panel mechanism for improved ease of installation
- 2 pair 258A voice wiring configuration



COMMSCOPE®

KRONE®

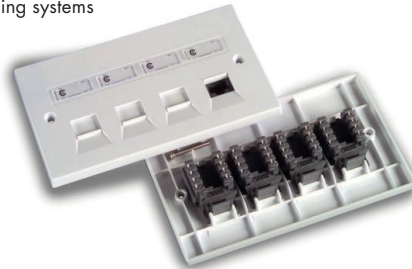
Colour: Black

Item	Man. Code	Description	Pairs	Category	Ports	Orientation	Height	Width	UoM
774750	7022 4 001-25	Patch Panel	2 Pair	Voice	25Port	Right Angle	1U	19"	Each
774751	7022 4 001-50	Patch Panel	2 Pair	Voice	50Port	Right Angle	1U	19"	Each

## KRONE Cat5e Assembled Outlets

Loaded faceplates featuring RJ-K LN modular jacks for LAN cabling systems

- Performance exceeds Cat 5e specifications up to 100MHz
- Swift terminations onto LSA-PLUS IDC's
- Includes integrated dust protection
- Comes complete with jacks, faceplate and fixings



COMMSCOPE®

KRONE®

Item	Man. Code	Description	Category	Size	Style	Type	Height	Width	Colour	UoM
791428	0-2153246-1	Assembled Outlet	Cat5e	Single Gang	1 x CL	Unshielded	86mm	86mm	White	Each
791429	0-2153246-2	Assembled Outlet	Cat5e	Single Gang	2 x CL	Unshielded	86mm	86mm	White	Each
791430	0-2153246-4	Assembled Outlet	Cat5e	Double Gang	4 x CL	Unshielded	86mm	146mm	White	Each

## KRONE Cat5e Keystone Jacks

Compact HK RJ45 UTP jack for use in wall outlets and patch panels

- 8-Pole, unshielded modular RJ-K HK jack
- Meets with the transmission requirements of Cat5e
- Keystone version
- With LSA-PLUS connection system



COMMSCOPE®

KRONE®

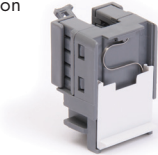
Item	Man. Code	Description	Category	Style	Type	Colour	UoM
770110	6540 1 130-04	Keystone Jack	Cat5e	HK	Unshielded	Black	Each
801619	0-2291217-2	Keystone Jack	Cat5e	KL	Unshielded	Black	Each

**SIGN UP**  
to receive product news and offers via email  
[comtedirect.co.uk](http://comtedirect.co.uk)

## KRONE Cat5e CL Jacks

RJ45 modular CL jack

- Performance exceeds Cat5e specifications
- Swift terminations onto LSA-PLUS IDC's
- Low profile design, ideal for shallow back box applications
- Complete with integrated dust protection
- Unshielded



**COMMSCOPE**<sup>®</sup>

KRONE<sup>®</sup>

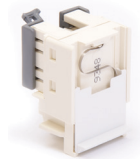
Colour: White

Item	Man. Code	Description	Category	UoM
770092	6540 1 200-01	CL Jack	Cat5e	Each

## KRONE Cat6 CL Jacks

Cat6 CL UTP Jack

- Low profile design which requires less than 35mm of depth
- Ideal for shallow trunking, back boxes and floor box applications
- Integrated spring dust shutter
- Unshielded



**COMMSCOPE**<sup>®</sup>

KRONE<sup>®</sup>

Colour: White

Item	Man. Code	Description	Category	UoM
777040	6537 1 010-00	CL Jack	Cat6	Each

## KRONE Inserter Wire 2A with Sensor LSA Plus

Standard tool for all data, information and technology and telecommunications wiring

- Can be used for all LSA-Plus series modules as well as for RJ45 jacks and Highband
- Sensor ensures the conductor is fully inserted into the contact before allowing excess wire to be cut off



**COMMSCOPE**<sup>®</sup>

KRONE<sup>®</sup>

Item	Man. Code	Description	Type	UoM
772146	6417 2 055-01	Inserter Wire 2A with Sensor	LSA Plus	Each



# NEED ASSISTANCE?

Call **01480 415400**  
or **0141 564 1234**  
(Scotland)

### KRONE Cat6a Jacks

RJ45 UTP/STP KM8 modular jacks

- Class EA/Cat6A as per ISO/IEC Ed.2 Amd.2
- Keystone design ensures compatibility with a range of faceplates and adaptors
- KM8 design provides built in conductor management
- LSA-PLUS quick connection technique
- Universal wiring



775630

COMMSCOPE®

KRONE®

Colour: Black

Item	Man. Code	Category	Style	Type	UoM
775630	6830 1 885-04	Cat6a	KM8	Unshielded	Each

### KRONE Flat CL Adaptor

Flat adaptors for use with CL keystone jacks

- In-line and angled options available



770096

770097

COMMSCOPE®

KRONE®

Item	Man. Code	Style	Jack Type	Colour	UoM
770096	6540 1 810-00	LJ6C	CL	White	Each
770097	6540 1 801-00	Euro	CL	White	Each

### KRONE Angled KM8 HK Shutters

Angled shutters for use with KM8/HK/C10 keystone jacks



778780

772452

COMMSCOPE®

KRONE®

Colour: White

Item	Man. Code	Style	Jack Type
778780	6540 1 814-01	LJ6C	KM8/HK/C10
772452	6538 4 111-05	Euro	KM8/HK/C10

### KRONE Angled CL Adaptor

Angled adaptors for use with CL keystone jacks

- In-line and angled options available
- 770098 cannot be used with shielded angled CL Jacks



770098

778086

COMMSCOPE®

KRONE®

Colour: White

Item	Man. Code	Style	Jack Type
778086	6540 1 813-00	LJ6C	CL
770098	6540 1 802-00	Euro	CL

### KRONE UK Faceplates

UK style, single and double gang deep faceplates for use with 25x50 adaptors and CL keystone jacks

- Added 6mm to depth of faceplate
- Ideal for use with Cat6 and CopperTen in shallow back boxes



774571



774572

COMMSCOPE®

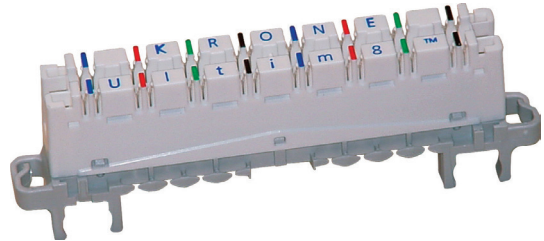
KRONE®

Item	Man. Code	Description	Type	Size	Socket	Height	Width	Colour	UoM
774571	6540 1 812-04	Faceplate	Deep	Single Gang	2x Euro	86mm	86mm	White	Each
774572	6540 1 812-05	Faceplate	Deep	Double Gang	4x Euro	86mm	146mm	White	Each

## KRONE Cat6 Highband Modules

High density cross-connect modules using IDC terminations

- Ultim8 module (2 x Cat 6 4 pair in, 2 x Cat 6 4 pair out)
- Mount on standard KRONE back mount frames



**COMMSCOPE®**  
KRONE®

Item	v	Description	Type	Category	Pairs	Colour	UoM
775624	6468 5 060-08	Module	Highband	Cat6	8 Pairs	White	Each

## KRONE Highband Label Holders

Highband label holders for circuit identification

- Recommended for patched environments
- For use with Highband modules
- 20.6mm x 107.9mm x 22.2mm
- Type 105 Label Strip



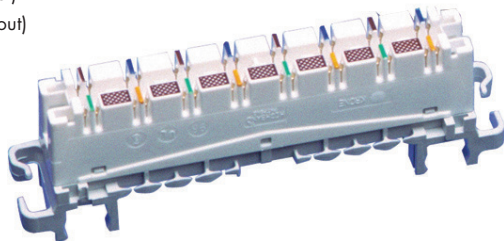
**COMMSCOPE®**  
KRONE®

Item	Man. Code	Description	Type	Category	Colour	UoM
770144	6462 2 096-00	Module	Label Holder	Highband	White	Each

## KRONE Cat5e Highband Modules

High density cross-connect modules using IDC terminations

- Highband 8 module (2 x Cat 5e 4 pair in, 2 x Cat 5e 4 pair out)
- Highband 16 module (4 x Cat 5e 4 pair in, 4 x Cat 5e 4 pair out)
- Mount on standard KRONE back mount frames



**COMMSCOPE®**  
KRONE®

Item	Man. Code	Description	Type	Category	Pairs	Colour	UoM
770116	6468 2 060-00.	Module	Highband	Cat5e	8 Pairs	White	Each
770118	6468 5 080-00	Module	Highband	Cat5e	16 Pairs	White	Each

### KRONE LJ6C Pod Boxes

Designed to help simplify the cabling of raised floor work spaces

- Can be passed through minimum 127mm floor grommets
- Sealed unit and shuttered ports provide dust protection
- 4 and 6 port variants available
- Ideal for high density environments such as desk clusters and call centres



COMMSCOPE®

KRONE®

Item	Man. Code	Description	Type	Ports	Style	Width	Depth	Colour	Length	UoM
776881	6540 1 678-06	Mini Pod	LJ6C	6Port	W/ Angled Adaptor	55mm	85mm	Black	195mm	Each

### AMP Netconnect LJ6C Pod Box

Unloaded mini-pods

- External mounting points
- Can be passed through standard floor grommets
- Incorporated dust protection on each port
- Unloaded version for AMP-TWIST jacks (STP and UTP) and SL series 110C jacks
- Available in 3, 4 or 6 port versions



COMMSCOPE®

AMP NETCONNECT®

Item	Man. Code	Description	Type	Ports	Style	Colour	UoM
795730	0-2153216-3	Mini Pod	Unloaded Keystone	3Port	W/ Angled Adaptor	Black	Each

**FULL**  
COMMSCOPE®  
**RANGE**  
**ONLINE**

**comtecdirect.co.uk**



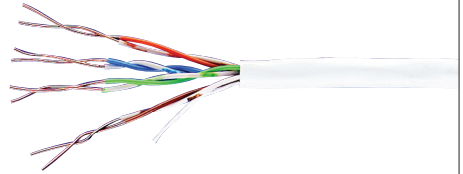
## AMP Netconnect Cat5e U/UTP Data Cable

100MHz Cat5e UTP cable

- AWG 24

### COMMSCOPE®

AMP NETCONNECT™



Item	Man. Code	Description	Category	Type	Sheath	No. of Pairs	NVP Rating	Outer Dia	Colour	Length	UoM
786817	0-57535-2	Solid	Cat5e	U/UTP	PVC	4 Pair	67%	5.1mm	White	305Mtr	Box Of 305mtr
786818	0-57538-2	Solid	Cat5e	U/UTP	LSZH	4 Pair	67%	5.1mm	White	305Mtr	Box Of 305mtr

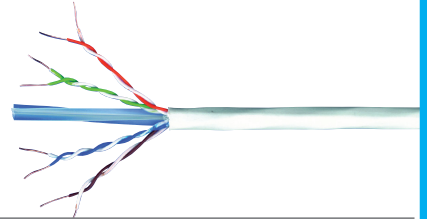
## AMP Netconnect Cat6 U/UTP Data Cable

Four pair copper cable

- 250MHz Cat6 U/UTP cable
- Qualified against IEC 61156-5 Cat6 and EN 50288-6-1
- Cross web filler to separate pairs

### COMMSCOPE®

AMP NETCONNECT™



Item	Man. Code	Description	Category	Type	Sheath	No. of Pairs	NVP Rating	Outer Dia	Colour	Length	UoM
786640	7-219585-2	Solid	Cat6	U/UTP	LSZH	4 Pair	68%	6.0mm	White	305Mtr	Box Of 305mtr

## AMP Netconnect Cat7 F/FTP Data Cable

Four pair copper cable

- Qualified against IEC 61156-5 Cat7 and EN 50288-4-1
- Individually foiled pairs plus overall foil shield and drain wire
- AWG 23 solid conductor

### COMMSCOPE®

AMP NETCONNECT™



Item	Man. Code	Description	Category	Type	Sheath	No. of Pairs	NVP Rating	Outer Dia	Colour	Length	UoM
789322	0-1711163-8	Solid	Cat7	F/FTP	LSZH	4 Pair	80%	7.4mm	Orange	500Mtr	Reel Of 500mtr
786820	0-1711163-3	Solid	Cat7	F/FTP	LSZH	4 Pair	80%	7.4mm	White	500Mtr	Reel Of 500mtr

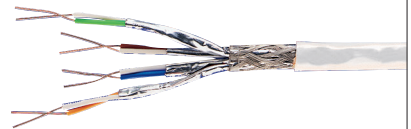
## AMP Netconnect Cat7A S/FTP Data Cable

1200 MHz high performance S/FTP cable, tested up to 1500 MHz

- Individually foiled pairs
- Overall copper braid
- S/FTP Screened Foiled Twisted Pair

### COMMSCOPE®

AMP NETCONNECT™



Item	Man. Code	Description	Category	Type	Sheath	No. of Pairs	NVP Rating	Outer Dia	Colour	Length	UoM
788752	0-1711910-1	Solid	Cat7a	S/FTP	LSFRZH	4 Pair	80%	7.5mm	White	1000Mtr	Reel Of 1km

## AMP Netconnect Cat5e Rear Punch Patch Panels

Cat5e 6 block unshielded patch panel

- 19" RJ-45 patch panel with 24 (1U) or 48 (2U) ports
- Enhanced 110 IDC blocks compatible with 110C impact or LSA-PLUS insertion tool
- Universal wiring
- Cable tie eyelets at rear



COMMSCOPE®

AMP NETCONNECT®

Item	Man. Code	Description	Category	Type	Ports	Orientation	Height	Width	Colour	UoM
786861	0-0406330-1	Patch Panel	Cat5e	Unshielded	24Port	Rear Punch	1U	19"	Black	Each
786862	0-0406331-1	Patch Panel	Cat5e	Unshielded	48Port	Rear Punch	2U	19"	Black	Each

## AMP Netconnect Cat5e Modular Patch Panels

Cat5e SL series patch panel

- Meet or exceed TIA and ISO enhanced Cat5e component performance requirements
- Ports may be individually replaced
- Universal wiring

**Blanking Panels**  
Page 19



COMMSCOPE®

AMP NETCONNECT®

Item	Man. Code	Description	Category	Type	Ports	Orientation	Height	Width	Colour	UoM
786865	0-1479154-2	Patch Panel	Cat5e	Unshielded	24Port	Modular SL Jack	1U	19"	Black	Each

## AMP Netconnect Cat6 Modular Patch Panels

SL Series 110Connect patch panels

- Exceed ANSI/TIA-568-C.2 and ISO/IEC 11801 requirements
- Universal wiring labels
- Jacks are terminated using TE's SL Series termination tool

**Blanking Panels**  
Page 19



COMMSCOPE®

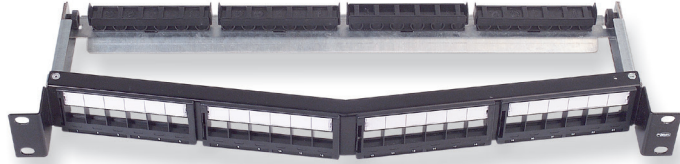
AMP NETCONNECT®

Item	Man. Code	Description	Category	Type	Ports	Orientation	Height	Width	Colour	UoM
786868	0-1375014-2	Patch Panel	Cat6	Unshielded	24Port	Modular SL Jack	1U	19"	Black	Each

## AMP Netconnect Unloaded Patch Panels

19" 1U Unloaded modular patch panels

- Angled and flush style panels available
- Height: 1U
- Width: 19"



### COMMSCOPE®

AMP NETCONNECT®

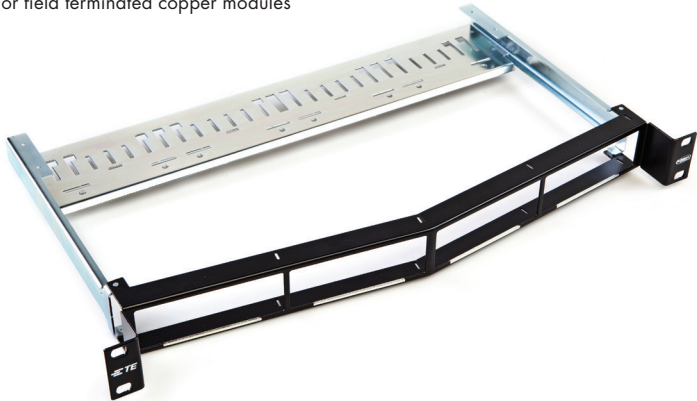
Colour: Black

Item	Man. Code	Category	Type	Ports	Orientation	Rear Cable Man	UoM
786874	1-1671157-2	Unloaded	Shielded	24Port	Angled Modular SL Jack	With Rear Cable Management	Each
786872	1-1671157-1	Unloaded	Unshielded	24Port	Angled Modular SL Jack	With Rear Cable Management	Each
795599	1-1671183-1	Unloaded	Unshielded/Shielded	24Port	Modular Flush SL Jack	With Rear Cable Management	Each
786873	0-336526-1	Unloaded	Unshielded/Shielded	24Port	Modular SL Jack	With Fixed Rear Cable Management	Each
801090	0-2153437-1	Unloaded	Unshielded/Shielded	24Port	Modular SL Jack	With Rear Cable Management	Each
790504	1-1671606-0	Unloaded	Unshielded/Shielded	48Port	Modular Q-jack	With Fixed Rear Cable Management	Each

## UCP Patch Panels

19" 1U Unloaded modular UCP Patch panel

- Supports for 4 Quick-fit modules
- Angled and flush mount style panels available
- Accepts pre-terminated Cu or FO cassettes or field terminated copper modules
- Includes grounding bolt



### COMMSCOPE®

AMP NETCONNECT®

Item	Man. Code	Category	Ports	Orientation	Height	Width	Colour	UoM
790850	1-1671590-1	Cu and FO	4 Slot	Quick-Fit Angled	1U	19"	Black	Each
789171	1-1671594-1	Cu and FO	4 Slot	Quick-Fit Flush	1U	19"	Black	Each

## AMP Netconnect Cat5e Keystone Jacks

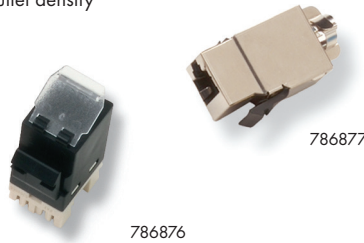
SL series 110Connect jacks

- Universal wiring - T568 A or B wiring pattern
- 786877 = slimline SL series. Thin profile improves outlet density

**Termination Tool  
for SL Jacks**  
Page 17

COMMSCOPE®

AMP NETCONNECT™



Item	Man. Code	Description	Category	Style	Type	Colour	UoM
786876	0-1375191-2	Keystone Jack	Cat5e	SL	Unshielded	Black	Each
786877	0-1375189-1	Keystone Jack	Cat5e	SL	Shielded	Silver	Each

## AMP Netconnect Cat6 Jacks

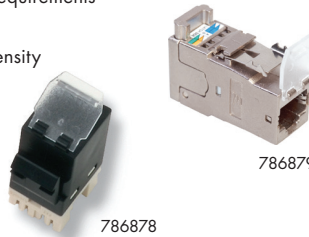
SL Series Cat6 jacks

- Meet or exceed all TIA and ISO component performance requirements
- Compatible with SL patch panels and SL outlet series
- 786878 = Slimline SL series. Thin profile improves outlet density

**Termination Tool  
for SL Jacks**  
Page 17

COMMSCOPE®

AMP NETCONNECT™



Item	Man. Code	Description	Category	Style	Type	Colour	UoM
786878	0-1375055-2	Keystone Jack	Cat6	SL	Unshielded	Black	Each
786879	0-1711342-1	Keystone Jack	Cat6	XG	Shielded	Silver	Each

## AMP Netconnect Cat6a Keystone Jacks

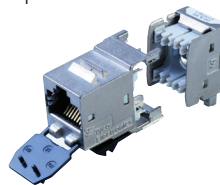
AMP-TWIST Cat6a SL Jack

- Meet or exceed all TIA and ISO component performance requirements
- Compatible with SL patch panels and SL outlet series
- Termination time less than 1 minute using CommScope's AWC technique
- Patented shield clamp with integrated strain relief
- Available with or without dust cover
- Optional coloured dust covers available

**Termination Tool  
for SL Jacks**  
Page 17

COMMSCOPE®

AMP NETCONNECT™



Item	Man. Code	Description	Category	Style	Type	Colour	UoM
786880	0-1711716-1	Keystone Jack	Cat6a	XGA	Shielded	Silver	Each

## AMP Netconnect Termination Tool for SL Jacks

Handheld field termination tool for SL Jacks

- Terminates all types of SL jacks (110C, AMP-TWIST 6S, AMP-TWIST 6AS and AMP-TWIST 7AS)
- Strips cable, marks foil, terminates and cuts 8 conductors at once
- Maintains twisted pair integrity
- Reliable connections every time
- Time and cost saving
- Lacing fixture assures simple and efficient use (not used for AMP-TWIST Jacks)

**Use on any  
SL Jack**



### COMMSCOPE®

AMP NETCONNECT®

Item	Man. Code	Description	Type	UoM
786891	0-1725150-1	Termination Tool	SL Series 110 Jack	Each

## Commscope Cat6a Q Jacks

Cat6a Q jacks install in Quareo managed connectivity panels

- Performance to ANSI/TIA-568-C.2 and ISO 11801, Edition 2 for Category 6/Class E and Category 6a/Class EA
- Independently certified
- RJ socket, 8 positions FCC Part (IEC 60603-7)
- A 110 style punch down tool is required for termination

**Unloaded  
Modular  
Q-Jack Panel**  
Page 15



### COMMSCOPE®

AMP NETCONNECT®

Item	Man. Code	Description	Category	Style	Type	Colour	UoM
790479	1-1671660-2	Keystone Q Jack	Cat6a	180 Deg	Unshielded	Black	Each
790490	1-1671660-1	Keystone Q Jack	Cat6a	180 Deg	Shielded	Black	Each

## AMP Netconnect Cat6a Jacks

AMP-TWIST Cat6a U SL jack

- Class EA as per ISO/IEC 11801 Ed.2 Amd.2
- Superior technology to reduce alien crosstalk
- Termination time less than 1 minute using CommScope's AWC technique
- Available with or without dust cover
- Various colours available



### COMMSCOPE®

AMP NETCONNECT®

Item	Man. Code	Description	Category	Style	Type	Colour	UoM
793269	0-1933476-2	Keystone Jack	Cat6a	180 Deg SL Twist	Unshielded	Black	Each

### AMP Netconnect Angled Keystone Shutter

SL Series angled shuttered fascias which accept SL jacks

- LJ6C can be mounted into the metal plate cut out in floor boxes
- LJ6C and Euro Modules can be used with UK style faceplates
- Jacks must be purchased separately



786883

COMMSCOPE®

AMP NETCONNECT®

Colour: White

Item	Man. Code	Style	Jack Type	UoM
786881	0-1711275-1	Euro	SL	Each
786883	0-1859096-1	LJ6C	SL	Each

### AMP Netconnect Flat Keystone Shutters

SL Series flat shuttered fascias which accept SL jacks

- LJ6C can be mounted into the metal plate cut out in floor boxes
- LJ6C and Euro Modules can be used with UK style faceplates
- Jacks must be purchased separately



COMMSCOPE®

AMP NETCONNECT®

Colour: White

Item	Man. Code	Description	Style	Jack Type	UoM
786882	0-1711348-1	Flat Shutter	LJ6C	SL	Each

### AMP Netconnect Euro Faceplates

Euro style single and double gang faceplates

- Unloaded faceplate accepts either 2 or 4 BS 50mm shuttered modules
- White (RAL 9003)



786885



786884

COMMSCOPE®

AMP NETCONNECT®

Item	Man. Code	Description	Type	Size	Socket	Height	Width	Colour	UoM
786884	0-1711399-1	Faceplate	Flat	Single Gang	2x Euro	86mm	86mm	White	Each
786885	0-1711400-1	Faceplate	Flat	Double Gang	4x Euro	86mm	146mm	White	Each

### AMP Netconnect LJ6C Faceplates

LJ6C single and double gang faceplates

- Unloaded faceplate accepts either 1 or 2 LJ6C shuttered modules
- White (RAL 9003)



COMMSCOPE®

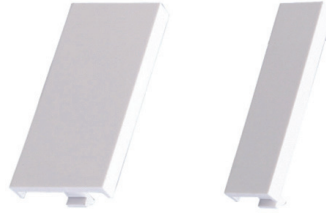
AMP NETCONNECT®

Item	Man. Code	Description	Type	Size	Socket	Height	Width	Colour	UoM
786886	0-1711301-1	Faceplate	Flat	Single Gang	1x LJ6C	86mm	86mm	White	Each
786887	0-1711302-1	Faceplate	Flat	Single Gang	2x LJ6C	86mm	86mm	White	Each
791081	0-2153004-1	Faceplate	Flat	Double Gang	4x LJ6C	86mm	146mm	White	Each

## AMP Netconnect Blanking Plates

Euro style and LJ6C blanking plates

- AMP Netconnect Euro style and LJ6C blanking plates
- White (RAL 9003)



**Modular  
Patch Panels**  
Page 15

COMMSCOPE®

AMP NETCONNECT®

Item	Man. Code	Description	Size	Type	Height	Width	Colour	UoM
786888	0-1711404-1	Blanking Plate	Quarter Blank	Euro	50mm	12.5mm	White	Each
786889	0-1711403-1	Blanking Plate	Half Blank	1x Euro	50mm	25mm	White	Each
786890	0-1711491-1	Blanking Plate	Full Blank	1x LJ6C	38.7mm	25mm	White	Each
793662	0-1116412-2	Blanking Plate	Full Blank	1x SL Jack	16.13mm	14.48mm	Black	Each



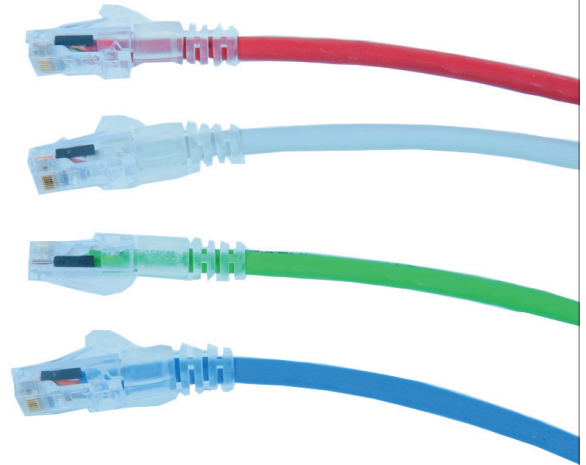
**YOUR NETWORK RUNS ON COMMSCOPE™**

## AMP Netconnect Cat5e U/UTP Patch Leads

Cat5e UTP stranded patch cords RJ45

- Cat5e according to ISO/IEC 11801 and EN 50173-1
- Slim line plug
- Transparent, short boot
- Supports POE and POE+
- 4 pairs of AWG 24 stranded copper wires
- Universal wiring scheme
- Other lengths available on request

**Other lengths stocked.**  
**Full range online**  
[comtecdirect.co.uk](http://comtecdirect.co.uk)



COMMSCOPE®

AMP NETCONNECT®

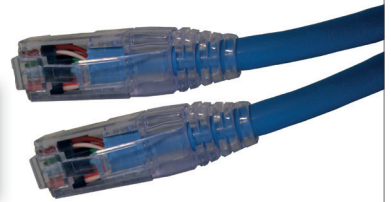
Item	Man. Code	Description	Category	Type	Sheath	Boot	Colour	Length	UoM
793294	0-2153275-1	Patch Lead	Cat5e	U/UTP	LSZH	Slimline Boot	Blue	1Mtr	Each
793295	0-2153275-2	Patch Lead	Cat5e	U/UTP	LSZH	Slimline Boot	Blue	2Mtr	Each
793296	0-2153275-3	Patch Lead	Cat5e	U/UTP	LSZH	Slimline Boot	Blue	3Mtr	Each
793297	0-2153275-5	Patch Lead	Cat5e	U/UTP	LSZH	Slimline Boot	Blue	5Mtr	Each
793306	0-2153278-1	Patch Lead	Cat5e	U/UTP	LSZH	Slimline Boot	Grey	1Mtr	Each
793307	0-2153278-2	Patch Lead	Cat5e	U/UTP	LSZH	Slimline Boot	Grey	2Mtr	Each
793308	0-2153278-3	Patch Lead	Cat5e	U/UTP	LSZH	Slimline Boot	Grey	3Mtr	Each
793309	0-2153278-5	Patch Lead	Cat5e	U/UTP	LSZH	Slimline Boot	Grey	5Mtr	Each
793298	0-2153276-1	Patch Lead	Cat5e	U/UTP	LSZH	Slimline Boot	Orange	1Mtr	Each
793299	0-2153276-2	Patch Lead	Cat5e	U/UTP	LSZH	Slimline Boot	Orange	2Mtr	Each
793300	0-2153276-3	Patch Lead	Cat5e	U/UTP	LSZH	Slimline Boot	Orange	3Mtr	Each
793301	0-2153276-5	Patch Lead	Cat5e	U/UTP	LSZH	Slimline Boot	Orange	5Mtr	Each
793286	0-2153273-1	Patch Lead	Cat5e	U/UTP	LSZH	Slimline Boot	Red	1Mtr	Each
793287	0-2153273-2	Patch Lead	Cat5e	U/UTP	LSZH	Slimline Boot	Red	2Mtr	Each
793288	0-2153273-3	Patch Lead	Cat5e	U/UTP	LSZH	Slimline Boot	Red	3Mtr	Each
793289	0-2153273-5	Patch Lead	Cat5e	U/UTP	LSZH	Slimline Boot	Red	5Mtr	Each
793278	0-2153241-1	Patch Lead	Cat5e	U/UTP	LSZH	Slimline Boot	White	1Mtr	Each
793279	0-2153241-2	Patch Lead	Cat5e	U/UTP	LSZH	Slimline Boot	White	2Mtr	Each
793280	0-2153241-3	Patch Lead	Cat5e	U/UTP	LSZH	Slimline Boot	White	3Mtr	Each
793281	0-2153241-5	Patch Lead	Cat5e	U/UTP	LSZH	Slimline Boot	White	5Mtr	Each
793302	0-2153277-1	Patch Lead	Cat5e	U/UTP	LSZH	Slimline Boot	Yellow	1Mtr	Each
793303	0-2153277-2	Patch Lead	Cat5e	U/UTP	LSZH	Slimline Boot	Yellow	2Mtr	Each
793304	0-2153277-3	Patch Lead	Cat5e	U/UTP	LSZH	Slimline Boot	Yellow	3Mtr	Each
793305	0-2153277-5	Patch Lead	Cat5e	U/UTP	LSZH	Slimline Boot	Yellow	5Mtr	Each

## AMP Netconnect Cat6 U/UTP Patch Leads

Cat6 U/UTP patch Cords RJ45

- Cat6 according to ISO/IEC11801 and EN-50173-1
- Slim-line plug, transparent short boot
- 4 pairs of AWG 24 stranded copper wires
- Universal wiring scheme

**Other lengths stocked.  
Full range online**  
[comtecdirect.co.uk](http://comtecdirect.co.uk)



Item	Man. Code	Description	Category	Type	Sheath	Boot	Colour	Length	UoM
795488	0-1711991-1	Patch Lead	Cat6	U/UTP	LSZH	Slimline Boot	Blue	1Mtr	Each
795495	0-1711991-2	Patch Lead	Cat6	U/UTP	LSZH	Slimline Boot	Blue	2Mtr	Each
795502	0-1711991-3	Patch Lead	Cat6	U/UTP	LSZH	Slimline Boot	Blue	3Mtr	Each
795509	0-1711991-5	Patch Lead	Cat6	U/UTP	LSZH	Slimline Boot	Blue	5Mtr	Each
795493	0-1711990-1	Patch Lead	Cat6	U/UTP	LSZH	Slimline Boot	White	1Mtr	Each
795500	0-1711990-2	Patch Lead	Cat6	U/UTP	LSZH	Slimline Boot	White	2Mtr	Each
795507	0-1711990-3	Patch Lead	Cat6	U/UTP	LSZH	Slimline Boot	White	3Mtr	Each
795514	0-1711990-5	Patch Lead	Cat6	U/UTP	LSZH	Slimline Boot	White	5Mtr	Each
795490	0-1711992-1	Patch Lead	Cat6	U/UTP	LSZH	Slimline Boot	Grey	1Mtr	Each
795497	0-1711992-2	Patch Lead	Cat6	U/UTP	LSZH	Slimline Boot	Grey	2Mtr	Each
795504	0-1711992-3	Patch Lead	Cat6	U/UTP	LSZH	Slimline Boot	Grey	3Mtr	Each
795511	0-1711992-5	Patch Lead	Cat6	U/UTP	LSZH	Slimline Boot	Grey	5Mtr	Each
795494	0-1711993-1	Patch Lead	Cat6	U/UTP	LSZH	Slimline Boot	Yellow	1Mtr	Each
795501	0-1711993-2	Patch Lead	Cat6	U/UTP	LSZH	Slimline Boot	Yellow	2Mtr	Each
795508	0-1711993-3	Patch Lead	Cat6	U/UTP	LSZH	Slimline Boot	Yellow	3Mtr	Each
795515	0-1711993-5	Patch Lead	Cat6	U/UTP	LSZH	Slimline Boot	Yellow	5Mtr	Each
795492	0-1711994-1	Patch Lead	Cat6	U/UTP	LSZH	Slimline Boot	Red	1Mtr	Each
796427	0-1711994-2	Patch Lead	Cat6	U/UTP	LSZH	Slimline Boot	Red	2Mtr	Each
795506	0-1711994-3	Patch Lead	Cat6	U/UTP	LSZH	Slimline Boot	Red	3Mtr	Each
795513	0-1711994-5	Patch Lead	Cat6	U/UTP	LSZH	Slimline Boot	Red	5Mtr	Each
795489	0-1711995-1	Patch Lead	Cat6	U/UTP	LSZH	Slimline Boot	Green	1Mtr	Each
795496	0-1711995-2	Patch Lead	Cat6	U/UTP	LSZH	Slimline Boot	Green	2Mtr	Each
796439	0-1711995-3	Patch Lead	Cat6	U/UTP	LSZH	Slimline Boot	Green	3Mtr	Each
795491	0-2153217-1	Patch Lead	Cat6	U/UTP	LSZH	Slimline Boot	Orange	1Mtr	Each
795498	0-2153217-2	Patch Lead	Cat6	U/UTP	LSZH	Slimline Boot	Orange	2Mtr	Each
795505	0-2153217-3	Patch Lead	Cat6	U/UTP	LSZH	Slimline Boot	Orange	3Mtr	Each
795512	0-2153217-5	Patch Lead	Cat6	U/UTP	LSZH	Slimline Boot	Orange	5Mtr	Each

## AMP Netconnect Cat6 U/UTP Colour Clip Patch Leads

Cat6 LSZH slimline RJ45 patch leads

- Cat6 according to ISO/IEC11801 and EN50173-1]
- Terminated on both ends with an RJ45 plug
- Colour coding the cords can be done by ordering the required colour clip

**Colour Clips**  
Page 23



Item	Man. Code	Description	Category	Type	Sheath	Boot	Colour	Length	UoM
802845	0-2153463-1	Patch Lead	Cat6	U/UTP	LSZH	Slimline Boot	White	1Mtr	Each
802869	0-2153463-2	Patch Lead	Cat6	U/UTP	LSZH	Slimline Boot	White	2Mtr	Each
802870	0-2153463-3	Patch Lead	Cat6	U/UTP	LSZH	Slimline Boot	White	3Mtr	Each
802871	0-2153463-5	Patch Lead	Cat6	U/UTP	LSZH	Slimline Boot	White	5Mtr	Each
802872	1-2153463-4	Patch Lead	Cat6	U/UTP	LSZH	Slimline Boot	White	7.5Mtr	Each
802873	1-2153463-0	Patch Lead	Cat6	U/UTP	LSZH	Slimline Boot	White	10Mtr	Each

## AMP Netconnect Cat6a F/FTP Solid Core Patch Leads

Cat6a shielded solid patch lead assemblies

- Compliant to ISO/IEC 11801 and EN 50173-1
- LSZH sheath
- Performance exceeding Category 6a specifications
- Slim-line plug



COMMSCOPE®

AMP NETCONNECT®

Item	Man. Code	Description	Category	Type	Sheath	Boot	Core	Core	Colour	Length	UoM
792755	1-1711826-0	Patch Lead	Cat6a	F/FTP	LSZH	Moulded Boot	Solid Core	Solid Core	White	10Mtr	Each
792146	2-1711826-0	Patch Lead	Cat6a	F/FTP	LSZH	Moulded Boot	Solid Core	Solid Core	White	20Mtr	Each
792761	3-1711826-0	Patch Lead	Cat6a	F/FTP	LSZH	Moulded Boot	Solid Core	Solid Core	White	30Mtr	Each

## AMP Netconnect Cat6a S/FTP Patch Leads

Cat6a S/FTP RJ-45 patch leads

- Exceeds Cat6a performance suitable for 10Gb/s data transmission
- Cat7 S/FTP stranded cable
- Colour matched snagless boots
- Universal B-wiring
- LSZH sheath
- Other lengths available on request



COMMSCOPE®

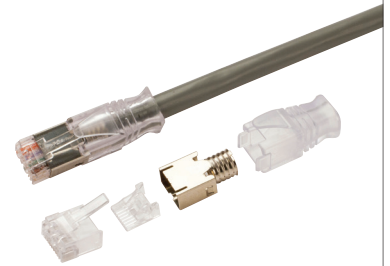
AMP NETCONNECT®

Item	Man. Code	Description	Category	Type	Sheath	Boot	Colour	Length	UoM
787630	0-1711816-1	Patch Lead	Cat6a	S/FTP	LSZH	Moulded Boot	Blue	1Mtr	Each
787631	0-1711816-2	Patch Lead	Cat6a	S/FTP	LSZH	Moulded Boot	Blue	2Mtr	Each
787632	0-1711816-3	Patch Lead	Cat6a	S/FTP	LSZH	Moulded Boot	Blue	3Mtr	Each
787633	0-1711816-5	Patch Lead	Cat6a	S/FTP	LSZH	Moulded Boot	Blue	5Mtr	Each
791380	0-1711817-1	Patch Lead	Cat6a	S/FTP	LSZH	Moulded Boot	Grey	1Mtr	Each
791381	0-1711817-2	Patch Lead	Cat6a	S/FTP	LSZH	Moulded Boot	Grey	2Mtr	Each
796549	0-1711817-3	Patch Lead	Cat6a	S/FTP	LSZH	Moulded Boot	Grey	3Mtr	Each
796553	0-1711817-5	Patch Lead	Cat6a	S/FTP	LSZH	Moulded Boot	Grey	5Mtr	Each
787635	0-1711819-1	Patch Lead	Cat6a	S/FTP	LSZH	Moulded Boot	Red	1Mtr	Each
787636	0-1711819-2	Patch Lead	Cat6a	S/FTP	LSZH	Moulded Boot	Red	2Mtr	Each
787637	0-1711819-3	Patch Lead	Cat6a	S/FTP	LSZH	Moulded Boot	Red	3Mtr	Each
796670	0-1711819-5	Patch Lead	Cat6a	S/FTP	LSZH	Moulded Boot	Red	5Mtr	Each
787650	0-1711815-1	Patch Lead	Cat6a	S/FTP	LSZH	Moulded Boot	White	1Mtr	Each
787651	0-1711815-2	Patch Lead	Cat6a	S/FTP	LSZH	Moulded Boot	White	2Mtr	Each
787652	0-1711815-3	Patch Lead	Cat6a	S/FTP	LSZH	Moulded Boot	White	3Mtr	Each
787653	0-1711815-5	Patch Lead	Cat6a	S/FTP	LSZH	Moulded Boot	White	5Mtr	Each
796565	0-1711818-1	Patch Lead	Cat6a	S/FTP	LSZH	Moulded Boot	Yellow	1Mtr	Each
796567	0-1711818-2	Patch Lead	Cat6a	S/FTP	LSZH	Moulded Boot	Yellow	2Mtr	Each
796569	0-1711818-3	Patch Lead	Cat6a	S/FTP	LSZH	Moulded Boot	Yellow	3Mtr	Each
796570	0-1711818-5	Patch Lead	Cat6a	S/FTP	LSZH	Moulded Boot	Yellow	5Mtr	Each

## AMP Netconnect Cat6a S/FTP Colour Clip Patch Leads

Cat6a LSZH slim-line RJ45 patch leads

- Exceeds ISO/IEC 11801 2nd edition, amendment 1 and amendment 2 and EN 50173-1 requirements for class
- EA channel, Class EA Permanent link and Cat6a
- Suitable for 10GBase-T performance
- Terminated on both ends with an RJ45 shielded plug
- Slim line boot supporting high density applications
- Innovative 360 degree strain-relief/shield provides excellent pull and bending resistance
- Colour coding the cords can be done by ordering the required colour clip



**Colour Clips**  
See below

AMP NETCONNECT®

Item	Man. Code	Description	Category	Type	Sheath	Boot	Colour	Length	UoM
802842	1-2153464-1	Patch Lead	Cat6a	S/FTP	LSZH	Slimline Boot	White	0.5Mtr	Each
801409	0-2153464-1	Patch Lead	Cat6a	S/FTP	LSZH	Slimline Boot	White	1Mtr	Each
801218	1-2153464-2	Patch Lead	Cat6a	S/FTP	LSZH	Slimline Boot	White	1.5Mtr	Each
801411	0-2153464-2	Patch Lead	Cat6a	S/FTP	LSZH	Slimline Boot	White	2Mtr	Each
802857	1-2153464-3	Patch Lead	Cat6a	S/FTP	LSZH	Slimline Boot	White	2.5Mtr	Each
801412	0-2153464-3	Patch Lead	Cat6a	S/FTP	LSZH	Slimline Boot	White	3Mtr	Each
802866	7-2153464-4	Patch Lead	Cat6a	S/FTP	LSZH	Slimline Boot	White	3.5Mtr	Each
802867	0-2153464-4	Patch Lead	Cat6a	S/FTP	LSZH	Slimline Boot	White	4Mtr	Each
803740	0-2153464-5	Patch Lead	Cat6a	S/FTP	LSZH	Slimline Boot	White	5Mtr	Each
802868	1-2153464-4	Patch Lead	Cat6a	S/FTP	LSZH	Slimline Boot	White	7.5Mtr	Each
802391	1-2153464-0	Patch Lead	Cat6a	S/FTP	LSZH	Slimline Boot	White	10Mtr	Each

## AMP Netconnect Colour Clip for Slimline Boots

Colour clip kits for slim-line AMP Netconnect Cat6 UTP LSZH and Cat6a S/FTP patch leads



AMP NETCONNECT®

Item	Man. Code	Description	Type	Boot	Colour	UoM
802846	0-2153443-2	Removable Clip	RJ45	Colour Clip	Black	Pack Of 50
802848	0-2153443-3	Removable Clip	RJ45	Colour Clip	White	Pack Of 50
802849	0-2153443-4	Removable Clip	RJ45	Colour Clip	Grey	Pack Of 50
802850	0-2153443-5	Removable Clip	RJ45	Colour Clip	Orange	Pack Of 50
802851	0-2153443-6	Removable Clip	RJ45	Colour Clip	Blue	Pack Of 50
802852	02153443-7	Removable Clip	RJ45	Colour Clip	Red	Pack Of 50
802853	0-2153443-8	Removable Clip	RJ45	Colour Clip	Yellow	Pack Of 50
802854	0-2153443-9	Removable Clip	RJ45	Colour Clip	Green	Pack Of 50
802855	1-2153443-0	Removable Clip	RJ45	Colour Clip	Violet	Pack Of 50
803007	0-2153443-1	Removable Clip	RJ45	Colour Clip	Almond	Pack Of 50

## KRONE Fibre Patch Panels - Sliding

Fibre optic 1U plastic sliding patch panels

- 1U sliding panel for ease of access and standard deployment into 19" racks
- Loaded with adaptors only
- Constructed from PC-ABS the tray is both lightweight and robust
- Internal cable management protects splices and pigtails and maintains bend radius
- UL94 V-0 flammability rating



COMMSCOPE®

KRONE®

Item	Man. Code	Description	Connection	Termination	Socket	Standard	Mode	Orientation	Colour	UoM
773405	7033 1 082-12	Fibre Patch Panel	12 Way	MM	ST	12x Simplex	Sliding Drawer	Plastic	Grey	Each
773407	7033 1 082-24	Fibre Patch Panel	24 Way	MM	ST	24x Simplex	Sliding Drawer	Plastic	Grey	Each
772527	7033 1 080-04	Fibre Patch Panel	4 Way	MM	SC	2x Duplex	Sliding Drawer	Plastic	Grey	Each
772528	7033 1 080-08	Fibre Patch Panel	8 Way	MM	SC	4x Duplex	Sliding Drawer	Plastic	Grey	Each
772529	7033 1 080-12	Fibre Patch Panel	12 Way	MM	SC	6x Duplex	Sliding Drawer	Plastic	Grey	Each
772530	7033 1 080-16	Fibre Patch Panel	16 Way	MM	SC	8x Duplex	Sliding Drawer	Plastic	Grey	Each
772531	7033 1 080-24	Fibre Patch Panel	24 Way	MM	SC	12x Duplex	Sliding Drawer	Plastic	Grey	Each
778613	7033 1 101-12	Fibre Patch Panel	12 Way	SM	SC	6x Duplex	Sliding Drawer	Plastic	Grey	Each
778614	7033 1 101-24	Fibre Patch Panel	24 Way	SM	SC	12x Duplex	Sliding Drawer	Plastic	Grey	Each
778002	7033 1 103-04	Fibre Patch Panel	8 Way	MM	LC	4x Duplex	Sliding Drawer	Plastic	Grey	Each
778003	7033 1 103-08	Fibre Patch Panel	16 Way	MM	LC	8x Duplex	Sliding Drawer	Plastic	Grey	Each
778004	7033 1 103-12	Fibre Patch Panel	24 Way	MM	LC	12x Duplex	Sliding Drawer	Plastic	Grey	Each
774639	7033 1 103-24	Fibre Patch Panel	48 Way	MM	LC	24x Duplex	Sliding Drawer	Plastic	Grey	Each
779761	7033 1 084-08	Fibre Patch Panel	16 Way	SM	LC	8x Duplex	Sliding Drawer	Plastic	Grey	Each
779762	7033 1 084-12	Fibre Patch Panel	24 Way	SM	LC	12x Duplex	Sliding Drawer	Plastic	Grey	Each
779622	7033 1 084-24	Fibre Patch Panel	48 Way	SM	LC	24x Duplex	Sliding Drawer	Plastic	Grey	Each

## KRONE Fibre Patch Panels - Split Sliding

24 Port metal split patch panel

- Per port labelling
- Reinforced stainless steel casing
- Fibre connectivity 24 x MT-RJ or 24 x LC (multimode or singlemode)
- Anti-tamper lid screwed to each tray
- 2 discrete trays (2 x 12 outlets)
- Internal cable management



COMMSCOPE®

KRONE®

Item	Man. Code	Description	Size	Mode	Connector	Type	Style	Material	UoM
795763	7033 1 015-02	Fibre Patch Panel Split	24 Way	MM	LC	24x Sx	2 Trays	Metal	Each
795764	7033 1 015-03	Fibre Patch Panel Split	24 Way	SM/MM	LC	24x Sx	2 Trays	Metal	Each
783012	7033 1 015-01	Fibre Patch Panel Split	24 Way	SM	LC	24x Sx	2 Trays	Metal	Each

## KRONE Fibre Wall Outlets

Designed for modern small-form-factor deployments

- MT-RJ offers singlemode and multimode solutions whilst LC, SC and ST are available as a Multimode solution
- Integrated cable management
- Footprint suits standard (BS4660) electrical wall back boxes
- Choose between direct termination and splicing - design allows the insertion of heat shrink splice protection holders
- Anchor points allow the fibre cable to be tied off at the point of entry
- Per port labelling for easy identification



COMMSCOPE®

KRONE®

Colour White

Item	Man. Code	Connector	Mode	Type	UoM
772598	7033 1 071-04	ST	MM	4x Simplex	Each
772596	7033 1 069-04	SC	MM	2x Duplex	Each
778611	7033 1 073-04	LC	MM	2 x Duplex	Each
795796	7033 1 073-98	LC	MM	2x Duplex	Each
782174	7033 1 073-08	LC	MM	4x Duplex	Each

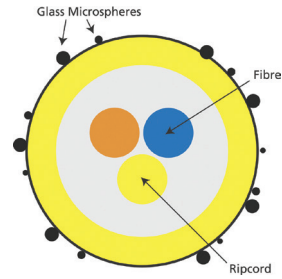
**MORE  
CHALLENGES  
SOLVED.**

**YOUR NETWORK RUNS ON COMMSCOPE™**

### KRONE Blown Fibre OS2

OS2 Singlemode blown fibre cable

- Blowing distance up to 1000m(750m for 12 core)
- Manufactured to British Telecom specifications
- Fibres already installed can be removed and replaced with a higher fibre count



COMMSCOPE®

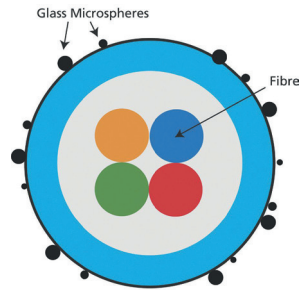
KRONE®

Item	Man. Code	Fibres	Mode	Type	Pan size	UoM
787722	7032 1 402-08	8F	SM	OS2	1000Mtr	Reel Of 1km
787739	7032 1 402-13	12F	SM	OS2	1000Mtr	Reel Of 1km
795305	7032 1 402-14	12F	SM	OS2	2000Mtr	Reel Of 2km

### KRONE Blown Fibre OM3

OM3 multimode blown fibre cable

- Blowing distances up to 1000m (750m for 12 core)
- Manufactured to British Telecom specifications
- Fibres already installed can be removed and replaced with a higher fibre count



COMMSCOPE®

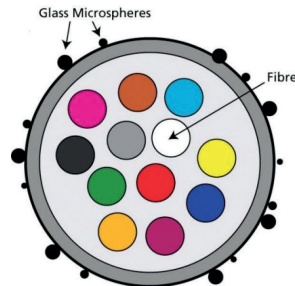
KRONE®

Item	Man. Code	Description	Fibres	Mode	Type	Pan size	UoM
777459	7032 1 406-09	Blown Fibre	8F	MM	OM3	500Mtr	Reel Of 500mtr
796133	7032 1 406-13	Blown Fibre	12F	MM	OM3	500Mtr	Reel Of 500mtr

### KRONE Blown Fibre OM4

OM4 multimode blown fibre cable

- Blowing distances up to 1000m (750m for 12 core)
- Manufactured to British Telecom specifications
- Fibres already installed can be removed and replaced with a higher fibre count



COMMSCOPE®

KRONE®

Item	Man. Code	Description	Fibres	Mode	Type	Pan size	UoM
796146	7032 1 407-11	Blown Fibre	8F	MM	OM4	2000Mtr	Reel Of 2km
796147	7032 1 407-14	Blown Fibre	12F	MM	OM4	1000Mtr	Reel Of 1km

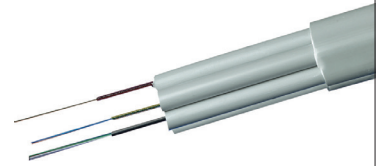
## KRONE Blown Fibre Tubes Internal

HDPE (High Density Polyethylene) low friction tubes for internal blown fibre installations

- Low friction internal coating for maximum fibre blowing distance
- 5mm O/D, one tube accommodates up to a 12 fibre unit
- LSZH indoor version with flame retardant properties
- Supplied on wooden drums

**COMMSCOPE®**

KRONE®



Item	Man. Code	Description	Sheath	Type	No. of Tubes	Diameter	Length	UoM
774116	7032 1 400-45	Blown Fibre Tubes	HDPE	LFH-Internal	4 Tubes	12.2mm	500Mtr	Mtr
774117	7032 1 400-46	Blown Fibre Tubes	HDPE	LFH-Internal	7 Tubes	17.2mm	500Mtr	Mtr
796101	7032 1 401-17	Blown Fibre Tubes	HDPE	LFH-Internal	12 Tubes	22.5mm	500Mtr	Mtr

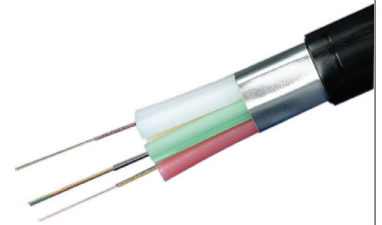
## KRONE Blown Fibre Tubes External

External tube cables with a HDPE (High Density Polyethylene) outer sheath and a variable number of HDPE low friction tubes

- Rapid, dedicated customer connections
- Low friction internal coating for maximum fibre blowing distance
- Each tube accommodates one blown fibre unit (up to 12 fibres in one unit)
- Cable construction - direct install (duct grade) with aluminium moisture barrier
- 5mm tube construction
- CST Armoured construction also available on request

**COMMSCOPE®**

KRONE®



Item	Man. Code	Description	Sheath	Type	No. of Tubes	Diameter	Length	UoM
775539	7032 1 400-35	Blown Fibre Tubes	HDPE	External Duct Grade	4 Tubes	16.5mm	500Mtr	Mtr
775540	7032 1 400-36	Blown Fibre Tubes	HDPE	External Duct Grade	7 Tubes	19.4mm	500Mtr	Mtr
796104	7032 1 401-20	Blown Fibre Tubes	HDPE	External Duct Grade	12 Tubes	29.5mm	500Mtr	Mtr
774106	7032 1 400-50	Blown Fibre Tubes	Double HDPE Sheath	External Direct Burial	4 Tubes	22.3mm	500Mtr	Mtr
796106	7032 1 400-51	Blown Fibre Tubes	Double HDPE Sheath	External Direct Burial	7 Tubes	23.3mm	500Mtr	Mtr
796108	7032 1 401-18	Blown Fibre Tubes	Double HDPE Sheath	External Direct Burial	12 Tubes	29.5mm	500Mtr	Mtr
796111	7032 1 400-98	Blown Fibre Tubes	CST	External Direct Burial	7 Tubes	23.3mm	500Mtr	Mtr

## KRONE Blown Fibre Gas Seal Connector

Push fits over the tube providing a gas tight seal

**COMMSCOPE®**

KRONE®



Item	Man. Code	Description	Type	Diameter	UoM
774108	7032 1 124-00	Blown Fibre	Gas Seal Connector	5mm	Pack Of 10

### KRONE Blown Fibre Tube Connectors

Used for simple push fit connection of 5mm to 5mm blown fibre tubing



COMMSCOPE®  
KRONE®

Item	Man. Code	Description	Type	Diameter	UoM
774110	7032 1 400-76	Blown Fibre	Tube Connector	5mm	Pack Of 10

### KRONE Blown Fibre Sealing Caps

Used for sealing tubing entering a customer premises



COMMSCOPE®  
KRONE®

Item	Man. Code	Diameter	UoM
774111	7032 1 223-00	5mm	Pack Of 10

### KRONE Blown Fibre End Cap

Used for terminating unused blown fibre tubing within external plant



COMMSCOPE®  
KRONE®

Item	Man. Code	Diameter	UoM
774112	7032 1 400-72	5mm	Pack Of 10

### KRONE Blown Fibre Gas Seal Units

Compact wall mounted unit

- Removable cover for easy access
- Supplied with components to mount the unit to a wall and secure external cable



COMMSCOPE®  
KRONE®

Item	Man. Code	Description	Type	UoM
774109	7032 1 401-19	Blown Fibre	Gas Seal Unit	Each

**NEXT DAY**  
PRE-NOON DELIVERY  
**ONLY £15**

## KRONE Blown Fibre Customer Lead-in Unit

Enables external cable to be passed through the building fabric from an outside wall

- Comprises two separate units mounted either side of the wall and connected by a length of conduit
- Can be used with blown fibre tubing or conventional cable



**COMMSCOPE®**

KRONE®

Item	Man. Code	Type	UoM
775541	7032 1 400-85	Customer Lead In Unit	Pair

## KRONE Blown Fibre T-Piece

Push fits over the tube providing a gas tight seal



**COMMSCOPE®**

KRONE®

Item	Man. Code	Type	UoM
787743	7032 1 232-00	T Piece	Each

## KRONE Blown Fibre Water Blocking Connector

Simple push fit device provides a water tight seal for tubes



**COMMSCOPE®**

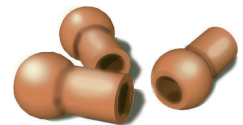
KRONE®

Item	Man. Code	Type	UoM
793768	7032 1 400-77	Water Blocking Connector	Each

## KRONE Blown Fibre Blowing Beads

Fixed to the end of the blown fibre unit before blowing commences

- Helps the guidance of the blown fibre unit through the blown fibre tube particularly at bends
- Minimises the risk of snagging at connector locations



**COMMSCOPE®**

KRONE®

Item	Man. Code	Type	UoM
778607	7032 1 400-58	Blowing Beads	Pack Of 1000

## KRONE Blown Fibre Internal Tube Distribution Unit

Accepts a range of indoor tube assemblies up to 19 tube capacity

- Allows individual tube breakout, re-routing or gas/water sealing
- Tubes are positively managed to prevent excessive tube bending



**COMMSCOPE®**

KRONE®

Item	Man. Code	Type	UoM
778610	7032 1 401-50	Internal Tube Distribution Unit	Each

## KRONE Blown Fibre Close Down Assembly

Used to protect the area between two lengths of tubes following a centre blow

- Comprising a piece of tube with a connector at either end



**COMMSCOPE®**

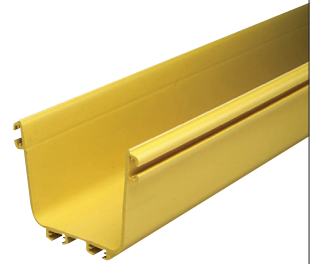
KRONE®

Item	Man. Code	Type	UoM
787740	7032 1 229-00	Close Down Assembly	Pack Of 10

### FiberGuide Straight Sections

A u-shaped trough that provides a protective raceway for optical fibres

- Available in 6ft lengths
- Carries fibres horizontally throughout the system
- Can be installed vertically when routing around obstacles



COMMSCOPE®

KRONE®

Item	Man. Code	Description	Size	Type	Material	Te Desc	Colour	Length	UoM
799983	1135254	FiberGuide	4x4	Straight	Plastic LSZH	FGS-MSHS-A	Yellow	6ft	Each
799985	1135504	FiberGuide	4x6	Straight	Plastic LSZH	FGS-MSHS-B	Yellow	6ft	Each
788027	1147660	FiberGuide	4x12	Straight	Plastic LSZH	FGS-MSHS-F	Yellow	6ft	Each

### FiberGuide Straight Section Covers

Hinged and snap-on covers for straight sections

- Hinged cover kits include mounting hinges and clips
- Snap-on covers include capture clips with mounting clasps



COMMSCOPE®

KRONE®

Item	Man. Code	Description	Size	Type	Material	Te Desc	Colour	Length	UoM
799984	1448606	FiberGuide	4x4	Straight Snap on Lid	Plastic LSZH	FGS-MSSC-A	Yellow	6ft	Each
799986	1448609	FiberGuide	4x6	Straight Snap on Lid	Plastic LSZH	FGS-MSSC-B	Yellow	6ft	Each

### FiberGuide Straight Adaptors

FiberGuide Straight Adaptors



COMMSCOPE®

KRONE®

Item	Man. Code	Description	Size	Type	Material	Te Desc	Colour	UoM
800006	1236307	FiberGuide	4x6/4x4	Straight Adaptor	Plastic LSZH	FGS-MDSA-AB	Yellow	Each
800330	1238918	FiberGuide	4x12/4x6	Straight Adaptor	Plastic LSZH	FGS-MDSA-FB	Yellow	Each

## FiberGuide Junctions & Snap-Fits

Junctions and snap-fit junctions for joining FiberGuide sections

- No tools are required for installation or removal
- A warning label indicating caution around fibre optic cable is included
- Snap-fit junctions exhibit superior holding force and accommodates support brackets



## COMMSCOPE®

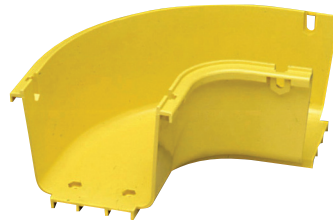
KRONE®

Item	Man. Code	Description	Size	Type	Material	Te Desc	Colour	UoM
800001	1254907	FiberGuide	4x4	Snap-Fit Coupler	Plastic LSZH	FGS-MFAW-A	Yellow	Each
800002	1254910	FiberGuide	4x6	Snap-Fit Coupler	Plastic LSZH	FGS-MFAW-B	Yellow	Each
788749	1254912	FiberGuide	4x12	Snap-Fit Coupler	Plastic LSZH	FGS-MFAW-F	Yellow	Each
800336	FGS-MJWR-A	FiberGuide		Downspout Exit Junction Kit	Plastic LSZH	FGS-MJWR-A	Yellow	Each

## FiberGuide Horizontal Bends

Horizontal elbow fittings are used to change direction and route the fibres in and out of the system

- Snap-on covers available separately



## COMMSCOPE®

KRONE®

Item	Man. Code	Description	Size	Type	Material	Te Desc	Colour	UoM
797532	1240022	FiberGuide	4x4	90 Degree Horizontal Bend	Plastic LSZH	FGS-MH9E-A	Yellow	Each
790865	1236290	FiberGuide	4x6	90 Degree Horizontal Bend	Plastic LSZH	FGS-MH9E-B	Yellow	Each
800589	1238907	FiberGuide	4x12	90 Degree Horizontal Bend	Plastic LSZH	FGS-MH9E-F	Yellow	Each

Item	Man. Code	Description	Size	Type	Material	Te Desc	Colour	UoM
797533	1059246	FiberGuide	4x4	90 Degree Horizontal Bend Cover	Plastic LSZH	FGS-SH9E-A	Yellow	Each
790866	1059387	FiberGuide	4x6	90 Degree Horizontal Bend Cover	Plastic LSZH	FGS-SH9E-B	Yellow	Each

## FiberGuide Vertical Bends

Vertical elbow fittings are used to change direction and route the fibres in and out of the system

- Snap-on covers available separately
- Material: Plastic LSZH



COMMSCOPE®

KRONE®

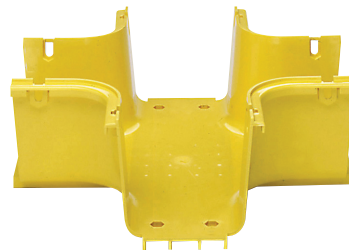
Item	Man. Code	Description	Size	Type	Te Desc	Colour	UoM
800258	1228464	FiberGuide	4x4	Elbow Down 90 Degree	FGS-MD9E-A	Yellow	Each
800260	1236403	FiberGuide	4x4	Elbow Up 90 Degree Inc. Cover	FGS-MU9E-A	Yellow	Each
794922	1235254	FiberGuide	4x6	Elbow Down 90 Degree	FGS-MD9E-B	Yellow	Each
796068	1236058	FiberGuide	4x6	Elbow Up 90 Degree Inc. Cover	FGS-MU9E-B	Yellow	Each
794918	1236680	FiberGuide	4x12	Elbow Up 45 Degree	FGS-MU4E-F	Yellow	Each
794919	1228467	FiberGuide	4x12	Elbow Down 45 Degree	FGS-MD4E-F	Yellow	Each
800604	1235477	FiberGuide	4x12	Elbow Down 90 Deg	FGS-MD9E-F	Yellow	Each

Item	Man. Code	Description	Size	Type	Material	Te Desc	Colour	UoM
800259	1059238	FiberGuide	4x4	Elbow Down 90 Degree Cover	Plastic LSZH	FGS-SD9E-A	Yellow	Each
794923	1059383	FiberGuide	4x6	Elbow Down 90 Degree Cover	Plastic LSZH	FGS-SD9E-B	Yellow	Each

## FiberGuide Horizontal Cross Pieces

Horizontal Cross Pieces

- Optional snap-on cover available separately



COMMSCOPE®

KRONE®

Item	Man. Code	Description	Size	Type	Material	Te Desc	Colour	UoM
800256	1237845	FiberGuide	4x4	Horizontal Cross Piece	Plastic LSZH	FGS-MHXP-A	Yellow	Each
800327	1234871	FiberGuide	4x12	Horizontal Cross Piece with 4x6 Exits	Plastic LSZH	FGS-MHXP-BF	Yellow	Each

Item	Man. Code	Description	Size	Type	Material	Te Desc	Colour	UoM
800257	1059231	FiberGuide	4x4	Horizontal Cross Piece Cover	Plastic LSZH	FGS-SHXP-A	Yellow	Each
800250	1059313	FiberGuide	4x6	Horizontal Cross Piece Cover	Plastic LSZH	FGS-SHXP-B	Yellow	Each

## FiberGuide Horizontal Tee Pieces

Horizontal T fittings

- Optional snap-on cover available separately



**COMMSCOPE®**

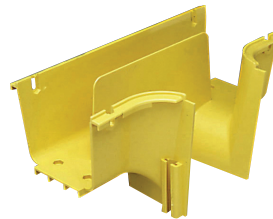
KRONE®

Item	Man. Code	Description	Size	Type	Material	Te Desc	Colour	UoM
800255	1243388	FiberGuide	4x4	Horizontal Tee Piece	Plastic LSZH	FGS-MHRT-A	Yellow	Each
790863	1243392	FiberGuide	4x6	Horizontal Tee Piece	Plastic LSZH	FGS-MHRT-B	Yellow	Each
800326	1237858	FiberGuide	4x12	Horizontal Tee Piece	Plastic LSZH	FGS-MHRT-F	Yellow	Each
800825	1237855	FiberGuide	4x12	Horizontal Tee Piece with 4x6 Exit	Plastic LSZH	FGS-MHRT-FB	Yellow	Each

Item	Man. Code	Description	Size	Type	Material	Te Desc	Colour	UoM
800003	1059283	FiberGuide	4x4	Horizontal Tee Piece Cover	Plastic LSZH	FGS-SHRT-A	Yellow	Each
790864	1059403	FiberGuide	4x6	Horizontal Tee Piece Cover	Plastic LSZH	FGS-SHRT-B	Yellow	Each

## FiberGuide Downspouts

Downspouts feed fibre from overhead straight sections into fibre optic equipment below



**COMMSCOPE®**

KRONE®

Item	Man. Code	Description	Size	Type	Material	Te Desc	Colour	UoM
800007	1237017	FiberGuide	4x4	Downspout	Plastic LSZH	FGS-MDSP-A	Yellow	Each
788035	1237032	FiberGuide	4x6	Downspout	Plastic LSZH	FGS-MDSP-B	Yellow	Each

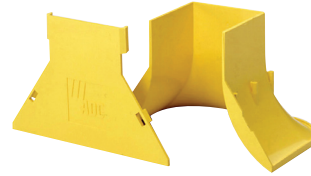


**FREE**  
NEXT DAY DELIVERY

### FiberGuide Trumpet Flares

Trumpet flares are recommended for use at the bottom of a downspout when directing fibres into a fibre distribution bay

- Provide bend radius protection
- Allow a large number of fibre patch leads to transition into a fibre bay
- A 4x4 trumpet flare is used for the 4x4 and 4x6 downspouts
- A 4x6 trumpet flare is used for the 4x12 downspout



COMMSCOPE®

KRONE®

Item	Man. Code	Description	Size	Type	Material	Te Desc	Colour	UoM
800265	1154923	FiberGuide	2x2	Trumpet Flare	Plastic LSZH	FGS-MTRM-C	Yellow	Each
788038	1138475	FiberGuide	4x4	Trumpet Flare	Plastic LSZH	FGS-MTRM-A	Yellow	Each
790867	1138473	FiberGuide	4x6	Trumpet Flare	Plastic LSZH	FGS-MTRM-B	Yellow	Each
800328	1138470	FiberGuide	4x12	Trumpet Flare	Plastic LSZH	FGS-MTRM-F	Yellow	Each

### FiberGuide End Caps

End caps provide additional protection for fibre leads and are easy to install



COMMSCOPE®

KRONE®

Item	Man. Code	Description	Size	Type	Material	Te Desc	Colour	UoM
795950	1138659	FiberGuide	4x4	End Cover Kit	Plastic LSZH	FGS-HMEC-A	Black	Each
800005	1138660	FiberGuide	4x6	End Cover Kit	Plastic LSZH	FGS-HMEC-B	Black	Each
794920	1138657	FiberGuide	4x12	End Cover Kit	Plastic LSZH	FGS-HMEC-F	Black	Each

### FiberGuide Vertical & Slotted Duct

Vertical slotted duct system



COMMSCOPE®

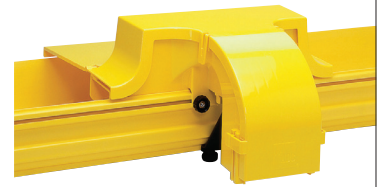
KRONE®

Item	Man. Code	Description	Size	Type	Material	Te Desc	Colour	UoM
800271	1438997	FiberGuide	2x2	Vertical Slotted Duct	Plastic LSZH	FGS-KTW1-JA	Yellow	Each

## FiberGuide Express Exits

Express exits are designed to distribute and manage medium cable counts to FOT or ODF equipment

- Kits include insertable exit fins and removable rear cable guides
- Guarantees 2 inch bend radius protection



KRONE®

Item	Man. Code	Description	Size	Type	Material	Te Desc	Colour	UoM
797528	1158124-ZZ	FiberGuide	2x2	Express Exit Kit	Plastic LSZH	FGS-MEXP-A/B/F	Yellow	Each
800597	300100112962	FiberGuide	4x4	Express Exit Kit	Plastic LSZH	FGS-MEXP-E-A/B/F	Yellow	Each

## FiberGuide Support Brackets

Support kits and brackets to support the FiberGuide system

- Part numbers including "-F-" are for use with the 12" system
- Part numbers including "-H-" are for use with the 24" system



KRONE®

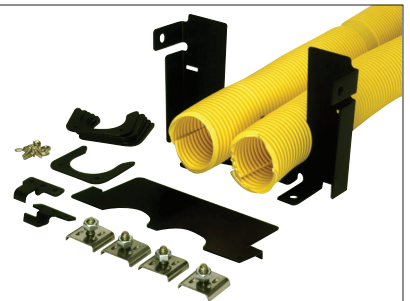
Item	Description	Type	Size	TE Desc	UoM
800262	FiberGuide	Centre Support Bracket Kit	12mm	FGS-HTUB-12MM	Each
800263	FiberGuide	Top Support C Bracket Rod	12mm	FGS-HNTS-12MM	Each
800592	FiberGuide	Ladder Rack Bracket Kit	4x6	FGS-HDLB-4	Each
800332	FiberGuide	Trapeze Bracket	12mm	FGS-HNTP-F-12MM	Each
800331	FiberGuide	Existing Threaded Rod Kit	12mm	FGS-HETR-12MM	Each
790868	FiberGuide	Threaded Rod Bracket	12mm	FGS-HNTR-12MM	Each



## FiberGuide Accessories

FiberGuide accessories including flex tube attachments

- Flexible tubing is 2 inches in diameter and attaches to the end of a straight section with an adaptor



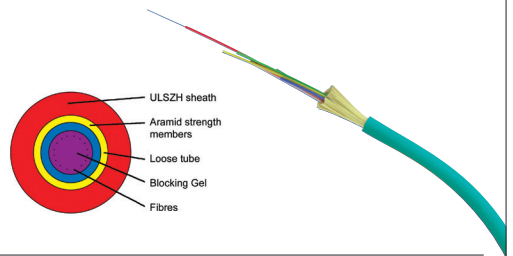
KRONE®

Item	Description	Type	Size	Material	TE Desc	Colour	UoM
796737	FiberGuide	Flex Tube Attachment with 5ft Flex	2x2	Plastic LSZH	FGS-MEX1-C-5F	Yellow	Each
800270	FiberGuide	Flex Tube Clamp Kit	7/8"	Plastic LSZH	FGS-HSHC-10	Yellow	Each
800267	FiberGuide	Tube Attachment Dual 7/8" 5ft Flex	2x2	Plastic LSZH	FGS-KT03-C	Yellow	Each
800333	FiberGuide	Hose Adapter Kit Cover	4x4	Plastic LSZH	FGS-KT03-A	Yellow	Each
800261	FiberGuide	Quick Knobs	PK10	Plastic LSZH	FGS-KQKB	Yellow	Each

## AMP Netconnect Dry Loose Tube OM3 Fibre Cable

Internal/External OM3 (XG) 'DRY' Loose Tube LSZH duct grade cable

- For indoor and outdoor applications
- Aramid strength members



COMMSCOPE®

AMP NETCONNECT®

Item	Man. Code	Description	Construction	Mode	Fibres	Standard	Core Size	Sheath	Colour	UoM
786957	2-599152-3	Fibre Cable	LT	MM	4F	OM3	50	LSZH	Aqua	Mtr
786958	2-599154-3	Fibre Cable	LT	MM	8F	OM3	50	LSZH	Aqua	Mtr
786959	2-599156-3	Fibre Cable	LT	MM	12F	OM3	50	LSZH	Aqua	Mtr
786960	2-599157-3	Fibre Cable	LT	MM	16F	OM3	50	LSZH	Aqua	Mtr
786961	2-599159-3	Fibre Cable	LT	MM	24F	OM3	50	LSZH	Aqua	Mtr

## AMP Netconnect Dry Loose Tube OM4 Fibre Cable

Dry Loose Tube OM4 cable

- For indoor and outdoor applications
- Aramid strength members for increased strength and durability
- Universal Low Smoke Zero Halogen(ULSZH)

COMMSCOPE®

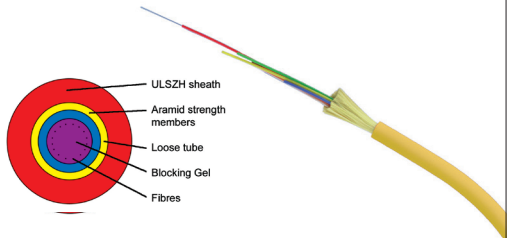
AMP NETCONNECT®

Item	Man. Code	Description	Construction	Mode	Fibres	Standard	Core Size	Sheath	Colour	UoM
787544	2-599152-2	Fibre Cable	LT	MM	4F	OM4	50	LSZH	Aqua	Mtr
787545	2-599154-2	Fibre Cable	LT	MM	8F	OM4	50	LSZH	Aqua	Mtr
787546	2-599156-2	Fibre Cable	LT	MM	12F	OM4	50	LSZH	Aqua	Mtr
787547	2-599157-2	Fibre Cable	LT	MM	16F	OM4	50	LSZH	Aqua	Mtr
795773	2-599159-2	Fibre Cable	DLT	MM	24F	OM4	50	LSZH	Aqua	Mtr

## AMP Netconnect Dry Loose Tube OS2 Fibre Cable

Dry Loose Tube OS2 cable

- For indoor and outdoor applications
- Aramid strength members for increased strength and durability
- Universal Low Smoke Zero Halogen(ULSZH)



COMMSCOPE®

AMP NETCONNECT®

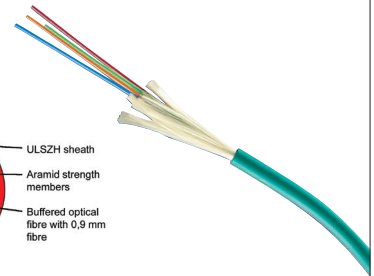
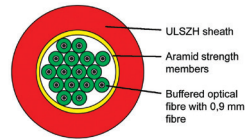
Item	Man. Code	Description	LT/TB	Mode	Fibres	Standard	Core Size	Sheath	Colour	UoM
795779	2-599152-4	Fibre Cable	DLT	SM	4F	OS2	9	LSZH	Yellow	Mtr
795780	2-599154-4	Fibre Cable	DLT	SM	8F	OS2	9	LSZH	Yellow	Mtr
795781	2-599156-4	Fibre Cable	DLT	SM	12F	OS2	9	LSZH	Yellow	Mtr
795782	2-599157-4	Fibre Cable	DLT	SM	16F	OS2	9	LSZH	Yellow	Mtr
795783	2-599159-4	Fibre Cable	DLT	SM	24F	OS2	9	LSZH	Yellow	Mtr

## AMP Netconnect Tight Buffered OM3 Fibre Cable

Internal/External OM3 (XG) Tight Buffered LSZH duct grade cable

- Suitable for backbone and Fibre-to-the-desk
- Aramid strength members for increased strength and durability
- Suitable for all termination techniques

AMP NETCONNECT®



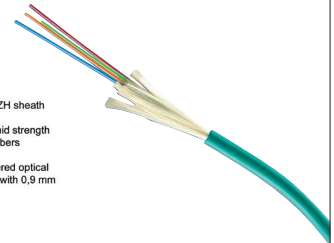
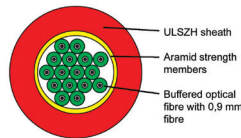
Item	Man. Code	Description	Construction	Mode	Fibres	Standard	Core Size	Sheath	Colour	UoM
786962	2-599144-3	Fibre Cable	TB	MM	4F	OM3	50	LSZH	Aqua	Mtr
786963	2-599146-3	Fibre Cable	TB	MM	8F	OM3	50	LSZH	Aqua	Mtr
786964	2-599148-3	Fibre Cable	TB	MM	12F	OM3	50	LSZH	Aqua	Mtr
786965	2-599149-3	Fibre Cable	TB	MM	16F	OM3	50	LSZH	Aqua	Mtr
786966	2-1716029-3	Fibre Cable	TB	MM	24F	OM3	50	LSZH	Aqua	Mtr

## AMP Netconnect Tight Buffered OM4 Fibre Cable

Internal/External OM4 (XGA) Tight Buffered LSZH duct grade cable

- Suitable for backbone and Fibre-to-the-desk
- Aramid strength members for increased strength and durability
- Suitable for all termination techniques

AMP NETCONNECT®



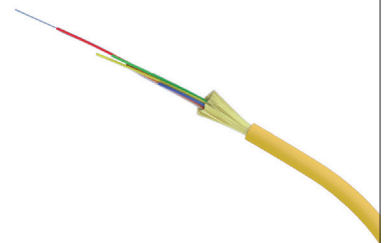
Item	Man. Code	Description	Construction	Mode	Fibres	Standard	Core Size	Sheath	Colour	UoM
787549	2-599144-2	Fibre Cable	TB	MM	4F	OM4	50	LSZH	Aqua	Mtr
787550	2-599146-2	Fibre Cable	TB	MM	8F	OM4	50	LSZH	Aqua	Mtr
787551	2-599148-2	Fibre Cable	TB	MM	12F	OM4	50	LSZH	Aqua	Mtr
787552	2-599149-2	Fibre Cable	TB	MM	16F	OM4	50	LSZH	Aqua	Mtr
787553	2-1716029-2	Fibre Cable	TB	MM	24F	OM4	50	LSZH	Aqua	Mtr

## AMP Netconnect Tight Buffered OS2 Fibre Cable

Internal/External OS2 Tight Buffered LSZH duct grade cable

- Suitable for backbone and Fibre-to-the-desk
- Aramid strength members for increased strength and durability
- Suitable for all termination techniques

AMP NETCONNECT®

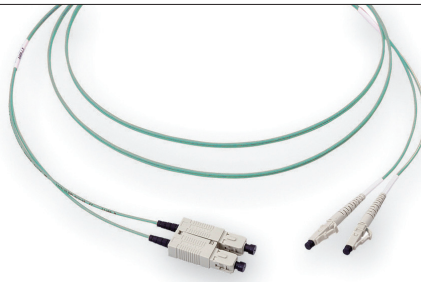


Item	Man. Code	Description	Construction	Mode	Fibres	Standard	Core Size	Sheath	Colour	UoM
786967	2-599144-4	Fibre Cable	TB	SM	4F	OS2	9	LSZH	Yellow	Mtr
795778	2-599146-4	Fibre Cable	TB	SM	8F	OS2	9	LSZH	Yellow	Mtr
786969	2-599148-4	Fibre Cable	TB	SM	12F	OS2	9	LSZH	Yellow	Mtr
786970	2-599149-4	Fibre Cable	TB	SM	16F	OS2	9	LSZH	Yellow	Mtr
786971	2-1716029-4	Fibre Cable	TB	SM	24F	OS2	9	LSZH	Yellow	Mtr

## AMP Netconnect OM3 LC-SC Fibre Patch Leads

LC Duplex/SC Duplex OM3 patch leads

- Assemblies are machine polished providing highest quality
- Ensured performance by Optimised-Physical-Contract (OPC)
- Factory tested and come with a test protocol



**COMMSCOPE®**

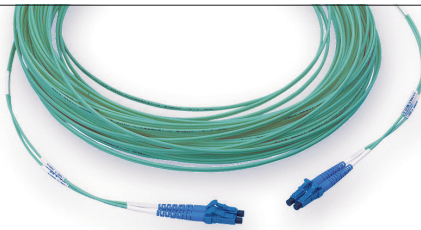
AMP NETCONNECT®

Item	Man. Code	Description	Type	Mode	Connector	Standard	Core Size	Sheath	Colour	Length	UoM
786929	0-6536967-1	Fibre Patch Lead	Duplex	MM	LC-SC	OM3	50	LSZH	Aqua	1Mtr	Each
786930	0-6536967-2	Fibre Patch Lead	Duplex	MM	LC-SC	OM3	50	LSZH	Aqua	2Mtr	Each
786931	0-6536967-3	Fibre Patch Lead	Duplex	MM	LC-SC	OM3	50	LSZH	Aqua	3Mtr	Each
786932	0-6536967-5	Fibre Patch Lead	Duplex	MM	LC-SC	OM3	50	LSZH	Aqua	5Mtr	Each
795769	1-6536967-0	Fibre Patch Lead	Duplex	MM	LC-SC	OM3	50	LSZH	Aqua	10Mtr	Each

## AMP Netconnect OM3 LC-LC Fibre Patch Leads

LC Duplex/LC Duplex OM3 patch leads

- Assemblies are machine polished providing highest quality
- Ensured performance by Optimised-Physical-Contact (OPC)
- Factory tested and come with a test protocol



**COMMSCOPE®**

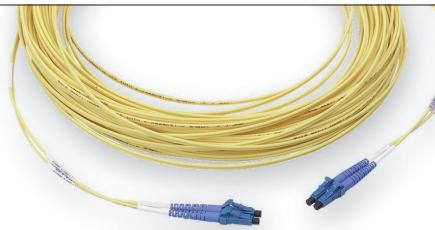
AMP NETCONNECT®

Item	Man. Code	Description	Type	Mode	Connector	Standard	Core Size	Sheath	Colour	Length	UoM
786937	0-6536969-1	Fibre Patch Lead	Duplex	MM	LC-LC	OM3	50	LSZH	Aqua	1Mtr	Each
786938	0-6536969-2	Fibre Patch Lead	Duplex	MM	LC-LC	OM3	50	LSZH	Aqua	2Mtr	Each
786939	0-6536969-3	Fibre Patch Lead	Duplex	MM	LC-LC	OM3	50	LSZH	Aqua	3Mtr	Each
786940	0-6536969-5	Fibre Patch Lead	Duplex	MM	LC-LC	OM3	50	LSZH	Aqua	5Mtr	Each
795766	1-6536969-0	Fibre Patch Lead	Duplex	MM	LC-LC	OM3	50	LSZH	Aqua	10Mtr	Each

## AMP Netconnect OS2 LC-LC Fibre Patch Leads

LC Duplex/LC Duplex OS2 patch leads

- Assemblies are machine polished providing highest quality
- Ensured performance by Optimised-Physical-Contact (OPC)
- Factory tested and come with a test protocol



**COMMSCOPE®**

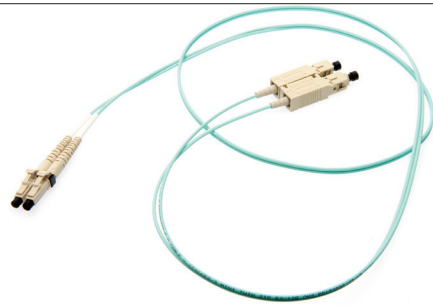
AMP NETCONNECT®

Item	Man. Code	Description	Type	Mode	Connector	Standard	Core Size	Sheath	Colour	Length	UoM
786941	0-6536501-1	Fibre Patch Lead	Duplex	SM	LC-LC	OS2	9	LSZH	Yellow	1Mtr	Each
786942	0-6536501-2	Fibre Patch Lead	Duplex	SM	LC-LC	OS2	9	LSZH	Yellow	2Mtr	Each
786943	0-6536501-3	Fibre Patch Lead	Duplex	SM	LC-LC	OS2	9	LSZH	Yellow	3Mtr	Each
786944	0-6536501-5	Fibre Patch Lead	Duplex	SM	LC-LC	OS2	9	LSZH	Yellow	5Mtr	Each
795788	1-6536501-0	Fibre Patch Lead	Duplex	SM	LC-LC	OS2	9	LSZH	Yellow	10Mtr	Each

## AMP Netconnect OS2 LC-SC Fibre Patch Leads

LC Duplex/SC Duplex OS2 patch leads

- Assemblies are machine polished providing highest quality
- Ensured performance by Optimised-Physical-Contact (OPC)
- Factory tested and come with a test protocol



**COMMSCOPE**<sup>®</sup>

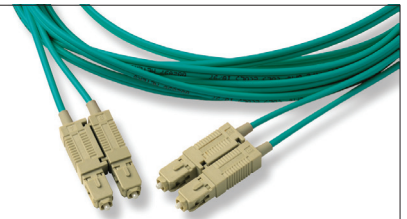
AMP NETCONNECT<sup>®</sup>

Item	Man. Code	Description	Type	Mode	Connector	Standard	Core Size	Sheath	Colour	Length	UoM
786933	0-6536508-1	Fibre Patch Lead	Duplex	SM	LC-SC	OS2	9	LSZH	Yellow	1Mtr	Each
786934	0-6536508-2	Fibre Patch Lead	Duplex	SM	LC-SC	OS2	9	LSZH	Yellow	2Mtr	Each
786935	0-6536508-3	Fibre Patch Lead	Duplex	SM	LC-SC	OS2	9	LSZH	Yellow	3Mtr	Each
786936	0-6536508-5	Fibre Patch Lead	Duplex	SM	LC-SC	OS2	9	LSZH	Yellow	5Mtr	Each
795792	1-6536508-0	Fibre Patch Lead	Duplex	SM	LC-SC	OS2	9	LSZH	Yellow	10Mtr	Each

## AMP Netconnect OM3 SC-SC Fibre Patch Leads

SC Duplex/SC Duplex OM3 patch leads

- Assemblies are machine polished providing highest quality
- Ensured performance by Optimised-Physical-Contact (OPC)
- Factory tested and come with a test protocol



**COMMSCOPE**<sup>®</sup>

AMP NETCONNECT<sup>®</sup>

Item	Man. Code	Description	Type	Mode	Connector	Standard	Core Size	Sheath	Colour	Length	UoM
795767	0-6536464-1	Fibre Patch Lead	Duplex	MM	SC-SC	OM3	50	LSZH	Aqua	1Mtr	Each
786926	0-6536464-2	Fibre Patch Lead	Duplex	MM	SC-SC	OM3	50	LSZH	Aqua	2Mtr	Each
786927	0-6536464-3	Fibre Patch Lead	Duplex	MM	SC-SC	OM3	50	LSZH	Aqua	3Mtr	Each
786928	0-6536464-5	Fibre Patch Lead	Duplex	MM	SC-SC	OM3	50	LSZH	Aqua	5Mtr	Each
795768	1-6536464-0	Fibre Patch Lead	Duplex	MM	SC-SC	OM3	50	LSZH	Aqua	10Mtr	Each

## AMP Netconnect OS2 SC-SC Fibre Patch Leads

SC Duplex/SC Duplex OS2 patch leads

- Assemblies are machine polished providing highest quality
- Ensured performance by Optimised-Physical-Contact (OPC)
- Factory tested and come with a test protocol

**COMMSCOPE**<sup>®</sup>

AMP NETCONNECT<sup>®</sup>

Item	Man. Code	Description	Type	Mode	Connector	Standard	Core Size	Sheath	Colour	Length	UoM
791375	0-6348260-1	Fibre Patch Lead	Duplex	SM	SC-SC	OS2	9	LSZH	Yellow	1Mtr	Each
790361	6348260-2	Fibre Patch Lead	Duplex	SM	SC-SC	OS2	9	LSZH	Yellow	2Mtr	Each
795790	0-6348260-3	Fibre Patch Lead	Duplex	SM	SC-SC	OS2	9	LSZH	Yellow	3Mtr	Each
791377	0-6348260-5	Fibre Patch Lead	Duplex	SM	SC-SC	OS2	9	LSZH	Yellow	5Mtr	Each
795791	1-6348260-0	Fibre Patch Lead	Duplex	SM	SC-SC	OS2	9	LSZH	Yellow	10Mtr	Each

# MORE SCALE EVERYWHERE.

YOUR NETWORK RUNS ON COMMSCOPE™

## AMP Netconnect OM3 Fibre Pigtails SC

### SC OM3 Pigtails

- Assemblies are machine polished providing highest quality
- Ensured performance by Optimised-Physical-Contact (OPC)
- Factory tested and come with a test protocol

**COMMSCOPE®**

AMP NETCONNECT®



Item	Man. Code	Description	Type	Mode	Connector	Standard	Core Size	Colour	Length	UoM
786972	0-6536561-2	Fibre Pigtail	Tight Buffered	MM	SC	OM3	50	Aqua	2Mtr	Each

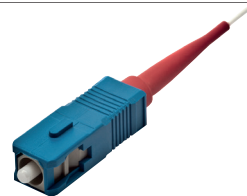
## AMP Netconnect OS2 Fibre Pigtails SC

### SC OS2 Pigtails

- All assemblies are machine polished providing highest quality
- Ensured performance by Optimised-Physical-Contact(OPC)
- Factory tested and come with a test protocol

**COMMSCOPE®**

AMP NETCONNECT®



Item	Man. Code	Type	Mode	Connector	Standard	Core Size	Colour	Length	UoM
795793	0-6695508-1	Tight Buffered	SM	SC	OS2	9	Yellow	1Mtr	Each
786973	0-6695508-2	Tight Buffered	SM	SC	OS2	9	Yellow	2Mtr	Each

## AMP Netconnect OM3 Fibre Pigtails LC

LC OM3 Pigtails

- Assemblies are machine polished providing highest quality
- Ensured performance by Optimised-Physical-Contact (OPC)
- Factory tested and come with a test protocol



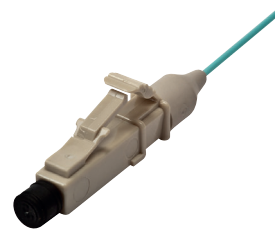
AMP NETCONNECT®

Item	Man. Code	Type	Mode	Connector	Standard	Core Size	Colour	Length	UoM
786974	0-6536966-1	Tight Buffered	MM	LC	OM3	50	Aqua	1Mtr	Each

## AMP Netconnect OM4 Fibre Pigtails LC

LC OM4 Pigtails

- Assemblies are machine polished providing highest quality
- Ensured performance by Optimised-Physical-Contact (OPC)
- Factory tested and come with a test protocol



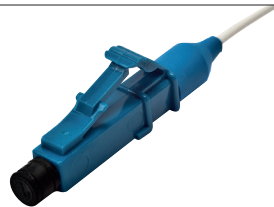
AMP NETCONNECT®

Item	Man. Code	Type	Mode	Connector	Standard	Core Size	Colour	Length	UoM
787589	0-2160042-2	Tight Buffered	MM	LC	OM4	50	Aqua	2Mtr	Each

## AMP Netconnect OS2 Fibre Pigtails LC

LC OS2 Pigtails

- Assemblies are machine polished providing highest quality
- Ensured performance by Optimised-Physical-Contact (OPC)
- Factory tested and come with test protocol



AMP NETCONNECT®

Item	Man. Code	Description	Type	Mode	Connector	Standard	Core Size	Colour	Length	UoM
786975	0-6536880-1	Fibre Pigtail	Tight Buffered	SM	LC	OS2	9	Yellow	1Mtr	Each

## AMP Netconnect Fibre Patch Panels - Sliding

1U 19" Sliding Drawer patch panels

- Drawer style 1U 19"
- Pre-installed dust covers on unpopulated ports
- Includes management and metric glands
- Supplied without splicing tray



COMMSCOPE®

AMP NETCONNECT®

Colour: Black

Item	Man. Code	Description	Size	Mode	Connector	Type	Style	Material	UoM
795765	2-1206505-4	Fibre Patch Panel	12 Way	MM	SC	6x Duplex	Sliding Drawer	Metal	Each
795786	2-1671017-4	Fibre Patch Panel	12 Way	SM	SC	6x Duplex	Sliding Drawer	Metal	Each
786949	4-1206505-4	Fibre Patch Panel	24 Way	MM	SC	12x Duplex	Sliding Drawer	Metal	Each
786950	4-1206343-4	Fibre Patch Panel	48 Way	MM	SC	24x Duplex	Sliding Drawer	Metal	Each
786952	4-1671002-4	Fibre Patch Panel	48 Way	SM	SC	24x Duplex	Sliding Drawer	Metal	Each
786953	2-1671000-8	Fibre Patch Panel	24 Way	MM	LC	12x Duplex	Sliding Drawer	Metal	Each
786954	4-1671000-8	Fibre Patch Panel	48 Way	MM	LC	24x Duplex	Sliding Drawer	Metal	Each
786955	2-1671000-4	Fibre Patch Panel	24 Way	SM	LC	12x Duplex	Sliding Drawer	Metal	Each
786956	4-1671000-4	Fibre Patch Panel	48 Way	SM	LC	24x Duplex	Sliding Drawer	Metal	Each

## AMP Netconnect Modular Fibre Patch panel

Drawer style 1U 19" fibre patch panel

- Plexi transparent cover
- 4 Quick-Fit cut outs
- One pin splice tray fixation (splice tray not included)
- Colour:



COMMSCOPE®

AMP NETCONNECT®

Colour Black

Item	Man. Code	Size	Mode	Connector	Type	Style	Material	Length	UoM
795743	1-1671260-1	Angled	SM/MM	Unloaded	4x Quick Fit Modules	Slide Out with Transparent Lid	Metal	1U	Each

## AMP Netconnect Cable Management Kit

Cable management kit with glands for 1U modular fibre optic panel - flushmount style



COMMSCOPE®

AMP NETCONNECT®

Item	Man. Code	Description	Type	Style	Colour	UoM
795749	0-1671273-1	Cable Attachment Kit	C/W Cable Glands	HI-D Panel	Black	Each



**ORDER  
ONLINE**

[comtedirect.co.uk](http://comtedirect.co.uk)

**NEED  
ASSISTANCE?**

Call **01480 415400**  
or **0141 564 1234**  
(Scotland)



## AMP Netconnect Fibre Optic Adapters

LC Style simplex 2.5mm bayonet adaptors

- Suitable for any LC-style simplex connector



COMMSCOPE®

AMP NETCONNECT®

Item	Man. Code	Type	Mode	Connector	Construction	Colour	UoM
787577	0-1918385-1	Duplex	SM	LC	Ceramic	Blue	Each

## AMP Netconnect Epoxy & Polish Fibre Optic Connectors

Multimode and singlemode epoxy connector kits

- High performance pre-radiussed ferrules
- SC compatible
- Multimode or singlemode
- Durability 0.2dB change after 500 cycles (MM)
- Temperature range -40C to + 85C
- Attenuation type < 0.2dB
- Available in simplex or duplex

COMMSCOPE®

AMP NETCONNECT®



Item	Man. Code	Description	Type	Mode	Connector	Construction	Boot	Colour	UoM
782128	5492458-1	Fibre Connector	Simplex	MM	ST	Ceramic	900 Microns	Black	Each
795795	0-5492123-1	Fibre Connector	Simplex	SM	SC	Ceramic	900 Microns	Blue	Each
787583	0-1918385-1	Fibre Connector	Simplex	MM	LC	Ceramic	900 Microns	Beige	Each
795794	0-1918384-1	Fibre Connector	Simplex	SM	LC	Ceramic	900 Microns	Blue	Each

### AMP Netconnect LightCrimp Fibre Optic Connectors

LightCrimp style connector

- Multimode and singlemode
- With strain relief and crimp eyelet



COMMSCOPE®

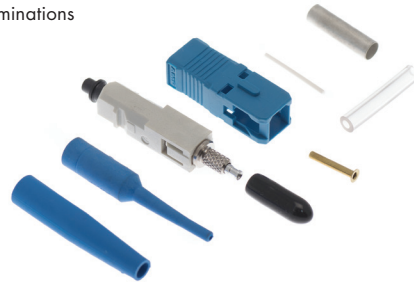
AMP NETCONNECT®

Item	Man. Code	Description	Type	Mode	Connector	Construction	Style	Boot	Colour	UoM
776226	0-5504600-1	Fibre Connector	Simplex	MM	ST	Ceramic	LightCrimp	3mm & 900 microns	Black	Each
775852	0-5503692-1	Fibre Connector	Simplex	MM	SC	Ceramic	LightCrimp	3mm & 900 microns	Black	Each

### AMP Netconnect LightCrimp Plus Singlemode Fibre Optic Connectors

Singlemode no-epoxy, no-polish connectors for faster and easier terminations

- Factory polished ferrule
- Simplex and duplex variants
- Exceeds ANSI/TIA/EIA-568-C and ISO 11801
- Construction: Ceramic



COMMSCOPE®

AMP NETCONNECT®

Item	Man. Code	Type	Mode	Connector	Style	Fibre Type	Boot	Colour	UoM
775849	0-6693276-1	Simplex	SM	SC	Lightcrimp Plus	OS2	3mm & 900 microns	Black/Beige	Each
775850	0-6693278-1	Duplex	SM	SC	Lightcrimp Plus	OS2	3mm & 900 microns	Black/Beige	Each
788523	0-6754482-1	Simplex	SM	LC	LightCrimp Plus	OS2	3mm & 900 microns	Blue	Each

### AMP Netconnect LightCrimp Plus Fibre Optic Connectors

Multimode no-epoxy, no-polish connectors for faster and easier fibre terminations

- Factory-polished ferrule
- Exceeds ANSI/TIA/EIA-568-C and ISO 11801
- Construction: Ceramic



COMMSCOPE®

AMP NETCONNECT®

Item	Man. Code	Type	Mode	Connector	Style	Fibre Type	Boot	Colour	UoM
775848	0-6278079-2	Simplex	MM	SC	LightCrimp Plus	OM2	3mm & 900 microns	Black/Beige	Each
779577	0-6588291-2	Simplex	MM	SC	LightCrimp Plus	OM3	3mm & 900 microns	Aqua/Beige	Each
782154	0-6754483-1	Simplex	MM	LC	LightCrimp Plus	OM1	3mm & 900 microns	Black/Beige	Each
778064	0-6754483-2	Simplex	MM	LC	LightCrimp Plus	OM2	3mm & 900 microns	Black/Beige	Each
779879	0-6754483-4	Simplex	MM	LC	LightCrimp Plus	OM3	3mm & 900 microns	Aqua/Beige	Each

## AMP Netconnect LightCrimp Plus Fibre Optic Termination Kit

Tool kit comes with a high quality, soft carrying case and is equipped with all the necessary tools required to terminate the listed, field installable connectors

- Terminates ST, SC, LC and MT-RJ connectors
- Contains Pro-Crimper II hand tool and appropriate die set, stripper tools, Kevlar scissor, cable holder and cleave tool
- LightCrimp Plus connector termination instructions and instructional CD-ROM included
- Without microscope



### COMMSCOPE®

AMP NETCONNECT®

Item	Man. Code	Description	Type	Connector	UoM
782163	0-1278118-4	Fibre Termination Kit	Premises	Ceramic LightCrimp Plus	Each

**FREE**  
NEXT DAY DELIVERY  
on orders over **£150**

## AMP Netconnect LightCrimp Plus Fibre Optic Termination Tool

Hand tool and die set for LightCrimp Plus LC and SC and LightCrimp Splice

- Cable jacket diameter 2mm



### COMMSCOPE®

AMP NETCONNECT®

Item	Man. Code	Description	Die Set	UoM
797009	0-2064603-1	Termination Tool	LC/SC LightCrimp	Each

## AMP Netconnect CORELINK Fibre Optic Splices

The CORELINK splice is an easy to use high performance mechanical splice for 125um singlemode and multimode fibres

- No fusion Splice necessary
- Re-useable
- Includes 2 actuator keys
- For tight buffer, semi-tight and loose tube



### COMMSCOPE®

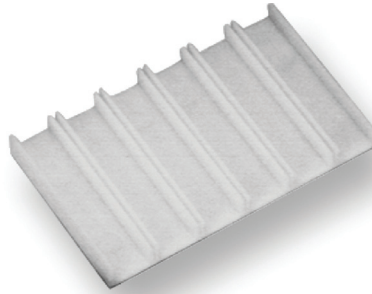
AMP NETCONNECT®

Item	Man. Code	Description	Type	Mode	Colour	UoM
782168	503577-1	Mechanical Splice	CORELINK	SM/MM	Clear	Pack Of 12

### AMP Netconnect CORELINK Fibre Optic Splice Holders

Multimode and singlemode adaptors

- Holds up to 12 CORELINK splices
- For mount in splice boxes or in distribution boxes



AMP NETCONNECT®

Item	Man. Code	Description	Type	UoM
782172	559066-1	Mechanical Splice Holder for 6 Splices	CORELINK	Each

### AMP Netconnect Splice Protector

Provide mechanical and environmental protection for fusion splices of single and ribbonised fibre

- Length: 62mm
- Material: Heat-Shrink



AMP NETCONNECT®

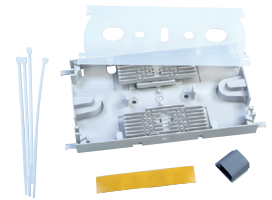
Colour: Clear UoM: Pack Of 100

Item	Man. Code	Description	Pack Size
791379	657054-000	Splice Protector SMOUV	100

### CommScope Fibre Optic Splice Tray for Dome Closure

Splice tray with cover

- Splice protectors not included



AMP NETCONNECT®

Item	Man. Code	Fibres	Port Style	UoM
795770	0-1671281-1	24F	SMOUV	Each



**NEED ASSISTANCE?**

Call **01480 415400**  
or **0141 564 1234**  
(Scotland)

## MPO Multimode OM3 Fibre Trunk Cable

Pre-terminated OM3 MPO trunk cable 12/24/48 fibre

- Factory pre-terminated assemblies
- Cables terminated with high density MPO connectors
- Trunks are equipped with midi fan-out and 3.2mm round cable MPO tails
- All tails are protected with transparent protection sleeve
- Lengths start at 2metre with increments of 1metre to suit custom design
- Core size: 50



AMP NETCONNECT®

Item	Man. Code	Description	Connector	Fibres	Mode	Standard	Sheath	Sheath	Colour	Length	UoM
795801	0-2055707-2	Fibre Trunk Cable	MPO-MPO	12F	MM	OM3	LSZH	LSZH	Aqua	2Mtr	Each
795802	5-2055707-1	Fibre Trunk Cable	MPO-MPO	12F	MM	OM3	LSZH	LSZH	Aqua	51Mtr	Each
795803	1-2055708-0	Fibre Trunk Cable	MPO-MPO	12F	MM	OM3	LSZH	LSZH	Aqua	100Mtr	Each
795804	0-2055709-2	Fibre Trunk Cable	MPO-MPO	24F	MM	OM3	LSZH	LSZH	Aqua	2Mtr	Each
795805	5-2055709-1	Fibre Trunk Cable	MPO-MPO	24F	MM	OM3	LSZH	LSZH	Aqua	51Mtr	Each
795806	1-2055710-0	Fibre Trunk Cable	MPO-MPO	24F	MM	OM3	LSZH	LSZH	Aqua	100Mtr	Each
795807	0-2160071-2	Fibre Trunk Cable	MPO-MPO	48F	MM	OM3	LSZH	LSZH	Aqua	2Mtr	Each

## MPOOptimate Multimode OM4 Fibre Trunk Cable

Cable terminated with low loss 12 fibre MPOOptimate connectors

- Terminated with female MPO connectors
- Trunks are equipped with midi fan-out 3.2mm round cable MPO tails
- All tails are protected with transparent protection sleeve



AMP NETCONNECT®

Item	Man. Code	Connector	Fibres	Mode	Standard	Core Size	Sheath	Length	UoM
796084	0-2055576-2	MPOOPTIMATE	12F	MM	OM4	50	LSZH	2Mtr	Each
796085	5-2055576-1	MPOOPTIMATE	12F	MM	OM4	50	LSZH	51Mtr	Each
796086	0-2055578-2	MPOOPTIMATE	24F	MM	OM4	50	LSZH	2Mtr	Each
796087	5-2055578-1	MPOOPTIMATE	24F	MM	OM4	50	LSZH	51Mtr	Each
796088	1-2055579-0	MPOOPTIMATE	24F	MM	OM4	50	LSZH	100Mtr	Each
796089	0-2160075-2	MPOOPTIMATE	48F	MM	OM4	50	LSZH	2Mtr	Each

## MPO Singlemode OS2 Fibre Trunk Cable

Pre-terminated OS2 MPO trunk cable 12/24/48 fibre

- Factory pre-terminated assemblies
- Cables terminated with high density MPO connectors
- Trunks are equipped with midi fan-out and 3.2mm round cable MPO
- All tails are protected with transparent protection sleeve
- Lengths start at 2meter with increments of 1metre to suit custom design



COMMSCOPE®

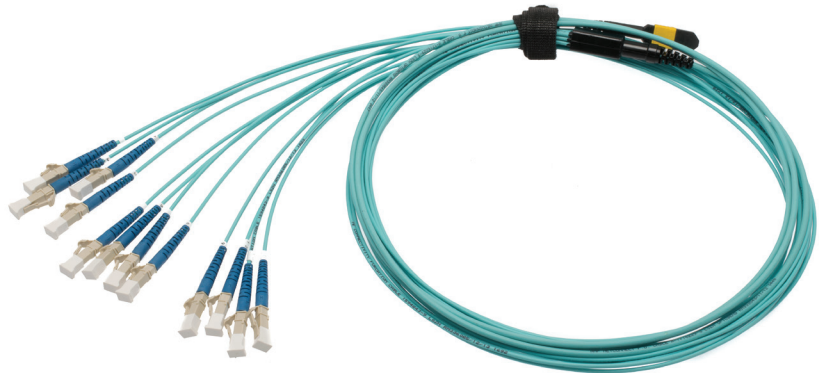
AMP NETCONNECT®

Item	Man. Code	Connector	Fibres	Mode	Standard	Core Size	Sheath	Colour	Length	UoM
796093	0-2055711-2	MPO-MPO	12F	SM	OS2	9	LSZH	Yellow	2Mtr	Each
796094	5-2055711-1	MPO-MPO	12F	SM	OS2	9	LSZH	Yellow	51Mtr	Each
796095	1-2055712-0	MPO-MPO	12F	SM	OS2	9	LSZH	Yellow	100Mtr	Each
796096	0-2055713-2	MPO-MPO	24F	SM	OS2	9	LSZH	Yellow	2Mtr	Each
796097	5-2055713-1	MPO-MPO	24F	SM	OS2	9	LSZH	Yellow	51Mtr	Each
796098	1-2055714-0	MPO-MPO	24F	SM	OS2	9	LSZH	Yellow	100Mtr	Each
796099	0-2160077-2	MPO-MPO	48F	SM	OS2	9	LSZH	Yellow	2Mtr	Each

## MPOptimate Multimode OM3 Fanout Trunk Cable

MPOptimate Fan-Out patch cable assemblies

- Low loss transition from 3.2mm MPO cable to 2mm LC tails
- All products with protocol, for instant and reliable quality



COMMSCOPE®

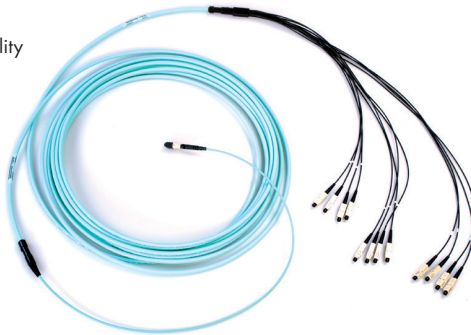
AMP NETCONNECT®

Item	Man. Code	Connector	Fibres	Mode	Standard	Core Size	Sheath	Colour	Length	UoM
796052	0-2160069-2	MPOPTIMATE Male-LC Fanout	12F	MM	OM3	50	LSZH	Aqua	2Mtr	Each

### MPOptimate Multimode OM4 Fanout Trunk Cable

MPOptimate OM4 fan out patch cable assemblies

- All products with protocol for constant and reliable quality
- Typical application intra rack equipment connections



Item	Man. Code	Connector	Fibres	Mode	Standard	Core Size	Sheath	Length	UoM
796090	0-2160067-2	MPOPTIMATE Male-LC Fan Out	12F	MM	OM4	50	LSZH	2Mtr	Each

### MPO/MPOptimate Pull Protection Sleeve

Re-usable installation pull and protection kit

- IP67 protection
- Contains 1 x installation sleeve with end cap and 1 x pull sleeve with pull eye



Item	Man. Code	Description	Type	Style	UoM
790665	0-2055567-1	Fibre Optic Cable	MPOptimate	Pull Protection Sleeve	Each

**SIGN UP**  
to receive product news  
and offers via email  
[comtedirect.co.uk](http://comtedirect.co.uk)

### Quick Fit MPO/MPOptimate Drawer Panel

Angled and flush quick-fit MPO/MPOptimate drawer panels

- Accommodates up to 4 MPO/MPOptimate Quick-Fit cassettes
- High-end solutions
- Fully integrated and retractable cable management bracket
- Allows for easy move, adds and changes



Item	Man. Code	Description	Connection	Socket	Type	Colour	UoM
790664	1-1671437-1	Fibre Patch Panel	MPO/MPOptimate	4 Slot	Quick-Fit Hi-D Flush	Black	Each
795797	1-1671436-1	Fibre Patch Panel	MPO/MPOptimate	4 Slot	Quick-Fit Hi-D Angled	Black	Each

## MPO Cassette

MPO to LC quick-fit cassettes

- Pre-terminated cassettes with either 1 or 2 MPO trunk connections at rear
- 6 x LC Duplex (12 fibres) or 6 x LC Quad (24 fibres) connection in the front
- Easy installation, moves, adds and changes
- Fits in all AMP NETCONNECT patch panels for quick-fit modules
- Panels accept up to 4 cassettes achieving up to 96 fibre connections on 1U



COMMSCOPE®

AMP NETCONNECT®

Item	Man. Code	Description	Connection	Termination	Socket	Standard	Mode	Orientation	Colour	UoM
789705	1-1671205-3	Quick-Fit Cassette	1x MPO	6x LC	Duplex	OM3	MM	Flipped	Black	Each
793353	0-1671205-3	Quick-Fit Cassette	1x MPO	6x LC	Duplex	OM3	MM	Straight	Black	Each
795799	1-1671206-3	Quick-Fit Cassette	2x MPO	6x LC	Quad	OM3	MM	Flipped	Black	Each
795798	0-1671206-3	Quick-Fit Cassette	2x MPO	6x LC	Quad	OM3	MM	Straight	Black	Each
796092	1-1671205-4	Quick-Fit Cassette	1x MPO	6x LC	Duplex	OS2	SM	Flipped	Black	Each
796091	0-1671205-4	Quick-Fit Cassette	1x MPO	6x LC	Duplex	OS2	SM	Straight	Black	Each

## MPOOptimate Cassette

MPOOptimate to LC quick-fit cassette

- Pre-terminated low loss cassettes
- Front 6 x optimised LC Duplex or 6 x optimised LC Quad
- Back 1 or 2 low loss MPOOptimate connectors
- Available in straight or flipped pair versions
- Fits in AMP NETCONNECT quick-fit patch panels with maximum density of 4 cassettes per 1U



COMMSCOPE®

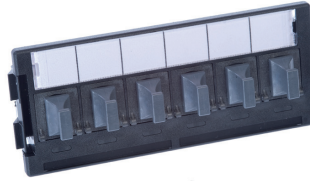
AMP NETCONNECT®

Item	Man. Code	Description	Connection	Termination	Socket	Standard	Mode	Orientation	UoM
795978	1-1671226-3	Quick-Fit Cassette	1x MPOOptimate	6x LC	Duplex	OM3	MM	Flipped	Each
795977	0-1671226-3	Quick-Fit Cassette	1x MPOOptimate	6x LC	Duplex	OM3	MM	Straight	Each
792689	1-1671227-3	Quick-Fit Cassette	2x MPOOptimate	6x LC	Quad	OM3	MM	Flipped	Each
792688	0-1671227-3	Quick-Fit Cassette	2x MPOOptimate	6x LC	Quad	OM3	MM	Straight	Each
796083	1-1671227-5	Quick-Fit Cassette	2x MPOOptimate	6x LC	Quad	OM4	MM	Flipped	Each
796082	0-1671227-5	Quick-Fit Cassette	2x MPOOptimate	6x LC	Quad	OM4	MM	Straight	Each

## MPO/MPOptimate coupler Quick Fit module

Quick fit module with 6 x or 12 x MPO coupler

- Port number labelling and additional label strip included
- MPO coupler used with one side MPO male connector and one side MPO female connector



**COMMSCOPE**<sup>®</sup>

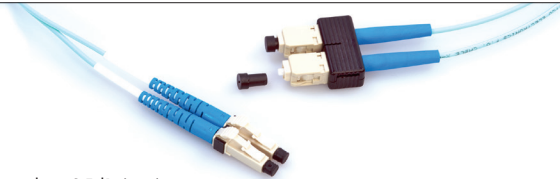
AMP NETCONNECT<sup>®</sup>

Item	Man. Code	Description	Fibres	Type	Core size	OM Type	Mode	Sheath	UoM
795800	0-1711987-1	Quick-Fit Cassette Module	6x MPO	Coupler	Simplex	OM3	MM	Straight	Each

## AMP Netconnect OPTIMATE LC OM3 Fibre Patch Leads

OM3 Patch leads with optimised LC connectors

- LSZH construction
- Optical performance attenuation 0.15dB (max), return loss 35dB (min)
- All products with protocol for constant and reliable quality



**COMMSCOPE**<sup>®</sup>

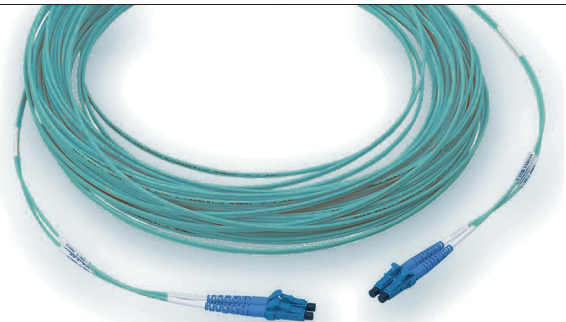
AMP NETCONNECT<sup>®</sup>

Item	Man. Code	Description	Type	Mode	Connector	Standard	Core Size	Sheath	Colour	Length	UoM
796078	0-1920743-1	Fibre Patch Lead	OPTIMATE	MM	LC-LC	OM3	50	LSZH	Aqua	1Mtr	Each
796079	0-1920743-2	Fibre Patch Lead	OPTIMATE	MM	LC-LC	OM3	50	LSZH	Aqua	2Mtr	Each
796080	0-1920743-3	Fibre Patch Lead	OPTIMATE	MM	LC-LC	OM3	50	LSZH	Aqua	3Mtr	Each
796081	0-1920743-5	Fibre Patch Lead	OPTIMATE	MM	LC-LC	OM3	50	LSZH	Aqua	5Mtr	Each

## AMP Netconnect OPTIMATE OM4 LC Fibre Patch Lead

OM4 Patch leads with optimised LC connectors

- LSZH construction
- LC connector attenuation 0.15dB (max), return loss 35dB (min)
- All products with protocol for constant and reliable quality



**COMMSCOPE**<sup>®</sup>

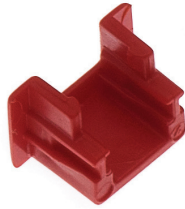
AMP NETCONNECT<sup>®</sup>

Item	Man. Code	Description	Type	Mode	Connector	Standard	Core Size	Sheath	Colour	Length	UoM
788052	0-2160046-1	Fibre Patch Lead	OPTIMATE	MM	LC-LC	OM4	50	LSZH	Aqua	1Mtr	Each
788053	0-2160046-2	Fibre Patch Lead	OPTIMATE	MM	LC-LC	OM4	50	LSZH	Aqua	2Mtr	Each
788054	0-2160046-3	Fibre Patch Lead	OPTIMATE	MM	LC-LC	OM4	50	LSZH	Aqua	3Mtr	Each
788055	0-2160046-5	Fibre Patch Lead	OPTIMATE	MM	LC-LC	OM4	50	LSZH	Aqua	5Mtr	Each

### KRONE Marking Caps

Red caps which fit over connection strip contacts

- For identification of priority circuits



COMMSCOPE®

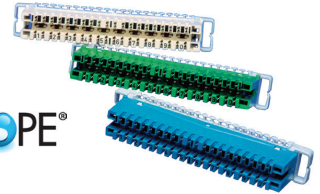
KRONE®

Item	Man. Code	Colour	UoM
770896	6089 3 006-00	Red	Each

### KRONE Disconnection Strips 237A

Joining of up to 10 pairs of cable with full disconnection facility

- Individually numbered pairs for easy identification
- Up to two wires in each contact
- Accepts solid or stranded conductors
- Colour: Cream
- Termination: IDC



COMMSCOPE®

KRONE®

Item	Man. Code	Pairs	Type	UoM
770869	6089 1 810-00	10 Pair	237A	Each

### KRONE Plastic Outrigger

Plastic wiring aid for KRONE 237 Series



COMMSCOPE

KRONE®

Item	Man. Code	Type	UoM
993823	6417 1 850-00	for KRONE 237A Series	Each

### KRONE Designation Strips 51A

Hinged label holder for fitting onto all 10pr and ABS modules

- Clips onto the top of 10pr and ABS modules
- Reusable labelling facility - large writing area for circuit identification
- Hinged to allow access to the module without removal
- Paper labels are protected by a clear plastic cover
- For additional labels please order 770892 (pk100)



COMMSCOPE®

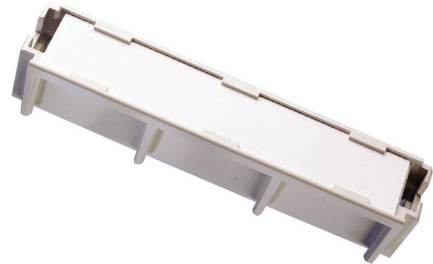
KRONE®

Item	Man. Code	Description	Pairs	Type	Colour	UoM
770890	6092 1 811-00	Label Holder	10 Pair	51A	Green	Each
770889	6092 1 810-04	Label Holder	10 Pair	51A	Grey	Each
770891	6092 1 812-00	Label Holder	10 Pair	51A	Blue	Each
770892	6534 1 001-00	Labels	-	51A	White	Pack Of 100

## KRONE Designation Strips 53A

Large label holder for designating groups of modules

- Occupies one tag position on a standard 10pr back mount frame
- Large writing area for identification of a group of modules
- Reversible plastic labels suitable for write on/write off
- For replacement re-useable labels please see 770894



COMMSCOPE®

KRONE®

Item	Man. Code	Description	Pairs	Type	Colour	UoM
770893	6092 1 820-00	Label Holder	10 Pair	53A	Grey	Each
770894	6092 3 019-02	Labels	-	53A	White	Each

## KRONE Marking Numbers

Numbered plugs used for identification

- Fit on the top of the 10pr modules
- Can be fitted on the left or right hand side
- Available in sets marked 0-9 or 10-100



COMMSCOPE®

KRONE®

Item	Man. Code	Style	Colour	UoM
770897	6089 3 023-00	Numbered 0-9	Grey	Each

## KRONE Connection Strips

- 237B = Permanent electrical path between incoming and outgoing cables
- 237D / 237E = All of the contacts in each module are connected to a 150mm lead with terminal ring for connection
- Termination: IDC

COMMSCOPE®

KRONE®



Item	Man. Code	Pairs	Type	Colour	UoM
990537	6089 1 002-02	10 Pair	237B	White	Each
770873	6089 1 830-00	20 Pair	237C	Grey	Each
992656	6089 1 840-00	76 Wire	237D	Red	Each
770875	6089 1 841-00	10 Pair	237E	Red	Each

## KRONE Connection Cord & Test Cords

Primarily used for interconnecting separate circuits either on the same or between different LSA-PLUS modules

- Connection cords are fitted with a plug at both ends
- Test cords have a plug on one end only, the other for connection to user's test equipment



COMMSCOPE®

KRONE®

Item	Man. Code	Description	Poles	BT Reference	Length	UoM
770905	6529 1 042-01	Connection Cord	4 Pole	D94473	1.5Mtr	Each
990164	6529 1 921-01	Test Cord	2 Pole	D94469	1.5Mtr	Each
990163	6529 1 041-01	Test Cord	4 Pole	D94471	1.5Mtr	Each

## KRONE Locking Wedges

Only for use with disconnection modules

- 23A - single pair disconnection of jumper wires from permanent wires. Provides temporary disconnection of lines for maintenance or pre going live
- 24A - single pair marking or priority circuits. Prevents disconnection of priority circuits and use of test/patch plugs. Cannot be removed without the use of a tool.
- 25A - disconnection of all 10prs on a module. Provides temporary disconnection of lines for maintenance or pre going live. Can be daisy chained for multiple cut-over



COMMSCOPE®

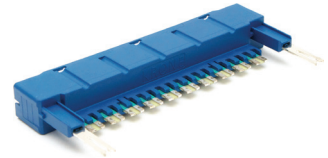
KRONE®

Item	Man. Code	Description	Pairs	Type	Colour	UoM
770899	6089 3 055-05	Locking Wedge	1 Pair	23A	Black	Each
770900	6089 3 056-00	Locking Wedge	1 Pair	24A	Red	Each
992658	6089 3 130-01	Locking Wedge	10 Pair	25A	White	Each

## KRONE Protector Mounting 5B

Mounting of 3 pole GDT's on KRONE 10 pair strips

- Designed for use with strip connections 237A and 237B
- Fitted with transparent cover to prevent accidental contact with GDTs
- Cover can be replaced with Designation Strips 51A where labelling of the module is required
- Automatically connects with the metal block mount frame for earth continuity
- Suitable for use with protectors 14A, 14A/1, 21A and 22C



COMMSCOPE®

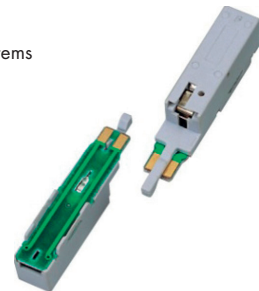
KRONE®

Item	Man. Code	Description	Pairs	Type	UoM
991042	6535 1 010-00	Protector Mounting	10 Pair	5B	Each
774650	7019 2 020-00	Protector Magazine	10 Pair	LSA-PLUS NT	Each

## KRONE LSA-PLUS Protector Kit

Compact plug-in single pair overvoltage protection for LSA-PLUS series

- Protects from damage caused by overvoltage
- Designed for use in exchanges and terminal equipment in analogue and ISDN (<2Mbps) systems
- Includes earthing rail



COMMSCOPE®

KRONE®

Item	Man. Code	Description	UoM
771928	5909 1 076-00	LSA-PLUS 5 Point Voltage Protector Kit	Pack Of 10

## LSA-Profil Disconnection strips

10 pair modules with disconnection points for opening the line, testing in both directions or insertion of graded protection elements

- LSA-PLUS modules mount on back mount frames
- Suitable for use in all xDSL and ADSL2+ circuits



### COMMSCOPE®

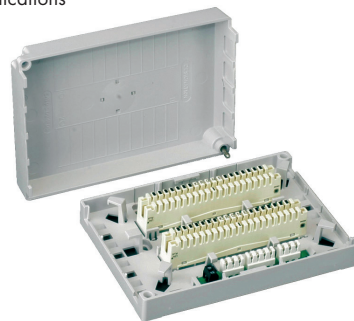
KRONE®

Item	Man. Code	Description	Pairs	Type	Termination	Colour	UoM
771180	6089 1 121-02	Disconnection Strip	10 Pair	Profil	IDC	Cream	Each

## KRONECTION Boxes

Distribution boxes used to connect and distribute cable wires in indoor applications

- Pre-assembled switching equipment for 20 pairs
- LSA-PLUS contacts are used to terminate cable wires as well as integral earthing wires
- Protection IP20 according to DIN 40050
- Flammability according to UL 94 V-O



### COMMSCOPE®

KRONE®

Item	Man. Code	Description	Location	Pairs	Type	Height	Width	Depth	UoM
771216	6429 1 016-00	Krone Box Conn	Internal	20 Pair	201C	170	120	35	Each

## KRONE Internal Box Connection 301A

Small plastic distribution box for surface mount applications

- Pre-installed connections for 100 pairs
- Enclosure made of highly impact-resistant, thermoplastic ABS Plastic
- Flammability class according to UL 94V-0
- Protection class IP 20 according to DIN 40050
- Designed for indoor use



### COMMSCOPE®

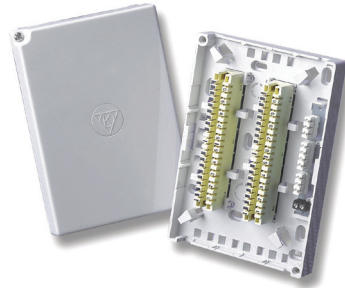
KRONE®

Item	Man. Code	Description	Location	Pairs	Type	Height	Width	Depth	UoM
774568	6530 1 017-00	Box Connection	Internal	100 Pair	301	320mm	210mm	120mm	Each

### KRONE Internal Box Connection 201D

Low profile plastic box accommodates up to 20 pairs or 2 LSA-PLUS modules

- Deep lid version where over voltage protection is to be fitted
- Complete with disconnection strips



COMMSCOPE®

KRONE®

Item	Man. Code	Description	Location	Pairs	Type	Height	Width	Depth	UoM
770730	6429 1 078-00	Box Connection	Internal	10 Pair	201D	170mm	120mm	43mm	Each
770731	6429 1 076-00	Box Connection	Internal	20 Pair	201D	170mm	120mm	43mm	Each
770732	6429 1 074-01	Box Connection	Internal	20 Pair	201D	170mm	120mm	73mm	Each

### KRONE External Box Connection IP54

Termination of up to 20 pairs using IDC terminations

- Manufactured from weatherproof GRP
- Suitable for wall or pole mounting



COMMSCOPE®

KRONE®

Item	Man. Code	Description	Location	Pairs	Type	Height	Width	Depth	UoM
993789	7083 1 301-00	Distribution Box	External	20 Pair	IP54	198mm	145mm	72mm	Each
791497	7083 1 401-00	Distribution Box	Internal	50 Pair	Empty	210mm	191mm	108mm	Each
789279	7083 1 501-00	Distribution Box	Internal	100 Pair	IP54	390mm	223mm	124mm	Each

### KRONE External Box Connection IP55

Backmount frame for ten 10 pair strips

- Weatherproof
- Flame Retardant
- UV resistant
- Wall or pole mounting (optional extra)



COMMSCOPE®

KRONE®

Item	Man. Code	Description	Location	Pairs	Type	Height	Width	Depth	UoM
993792	6542 1 003-00	Box Connection	External IP55	100 Pair	301	377mm	225mm	261mm	Each

### KRONE 244A Style Plug

Plug kit for user assembly

- For parallel connection
- 2-Pole



COMMSCOPE®

KRONE®

Item	Man. Code	Type	Position / Con	UoM
990736	6624 2 201-04	244A	2/1	Each



### KRONE Cable Management Panels

19" jumper bar with 5 plastic rings

- Mounts onto a standard 19" rack
- Provides cable management for patch cords



COMMSCOPE®

KRONE®

Item	Man. Code	Description	No of Rings	Ring Orientati	Height	Width	Colour	UoM
770150	6527 1 006-01	Cable Manager	5 Ring	Vertical	1U	19"	Black	Each

### KRONE Outriggers

19 inch outrigger for KRONE patch panels

- Attaches to standard 19 inch racks
- Leaves both hands free for rapid patch panel terminations
- Quick release and securing mechanism



COMMSCOPE®

KRONE®

Item	Man. Code	Descripting	Type	Colour	UoM
770155	6527 1 013-00	Outrigger	Panel	Black	Each

## NETpodium 19" Rack

NETpodium cross-connect rack

- 2 x 45U cable managers included
- 2 large vertical cable ducts included
- Universal 19" mounting rails according EIA 310

NETpodium accessories to complete your rack

- Doors are non-perforated and sold in pairs (left and right)
- Side and back panels are solid aluminium
- Baying kit to attach two NETpodium racks side-by-side or back-to-back
- Overhead cabling pathway provides a cost effective way to route cables from one cabinet to an adjacent cabinet
- FO Slack storage spools provide overhead capacity for FO cords



COMMSCOPE®

AMP NETCONNECT™

Item	Man. Code	Description	Type	Height	Width	Depth	UoM
796151	1-1671405-1	NETpodium	Rack	2200	1000	600	Each

Item	Man. Code	Description	Type	UoM
796157	1-1671545-1	NETpodium	Front Doors(pair left and right)	Each
796152	1-1671578-1	NETpodium	Side Panel Left	Each
796153	1-1671578-2	NETpodium	Side Panel Right	Each
796154	1-1671579-1	NETpodium	Back Panel	Each
796155	1-1671587-1	NETpodium	Baying Kit	Each
796156	1-1671508-1	NETpodium	Overhead Cabling Pathway	Each
796792	1-1671610-1	NETpodium	Slack Storage Spools	Each

# COMMSCOPE®



**MORE  
CHALLENGES  
SOLVED.**

**YOUR NETWORK RUNS ON COMMSCOPE™**

CommScope has acquired  
TE Connectivity's telecom,  
enterprise and wireless business.

## Comtec Head Office

Cardinal Way  
Cardinal Distribution Park  
Godmanchester  
Huntingdon  
England  
PE29 2XJ

### Sales Contacts

Order Phone: +44 (0)1480 415400  
Order Email: [sales@comtecdirect.co.uk](mailto:sales@comtecdirect.co.uk)

### Other Contact Details

Main Switchboard: +44 (0)1480 415415  
Marketing: +44 (0)1480 415450  
Technical Services: +44 (0)1480 415481  
Purchasing: +44 (0)1480 415460  
Accounts: +44 (0)1480 415430

## Comtec Scotland

20 Couper Street  
Glasgow  
G4 0DL

### Sales Contacts

Order Phone: +44 (0)141 564 1234  
Order Email: [glasgow@comtecdirect.co.uk](mailto:glasgow@comtecdirect.co.uk)

## Comtec Hong Kong

Unit M4  
M/F Sunbeam Centre  
27 Shing Yip Street  
Kwun Tong  
Kowloon  
Hong Kong

### Sales Contacts

Telephone: +852 2311 2263  
Email: [sales@comtec-comms.com.hk](mailto:sales@comtec-comms.com.hk)

## Comtec Qatar

PO Box 82281  
Doha  
Qatar

### Sales Contacts

Telephone: +974 44 3535 86  
Email: [sales@comtecdirect.me](mailto:sales@comtecdirect.me)

**[comtecdirect.co.uk](http://comtecdirect.co.uk)**

