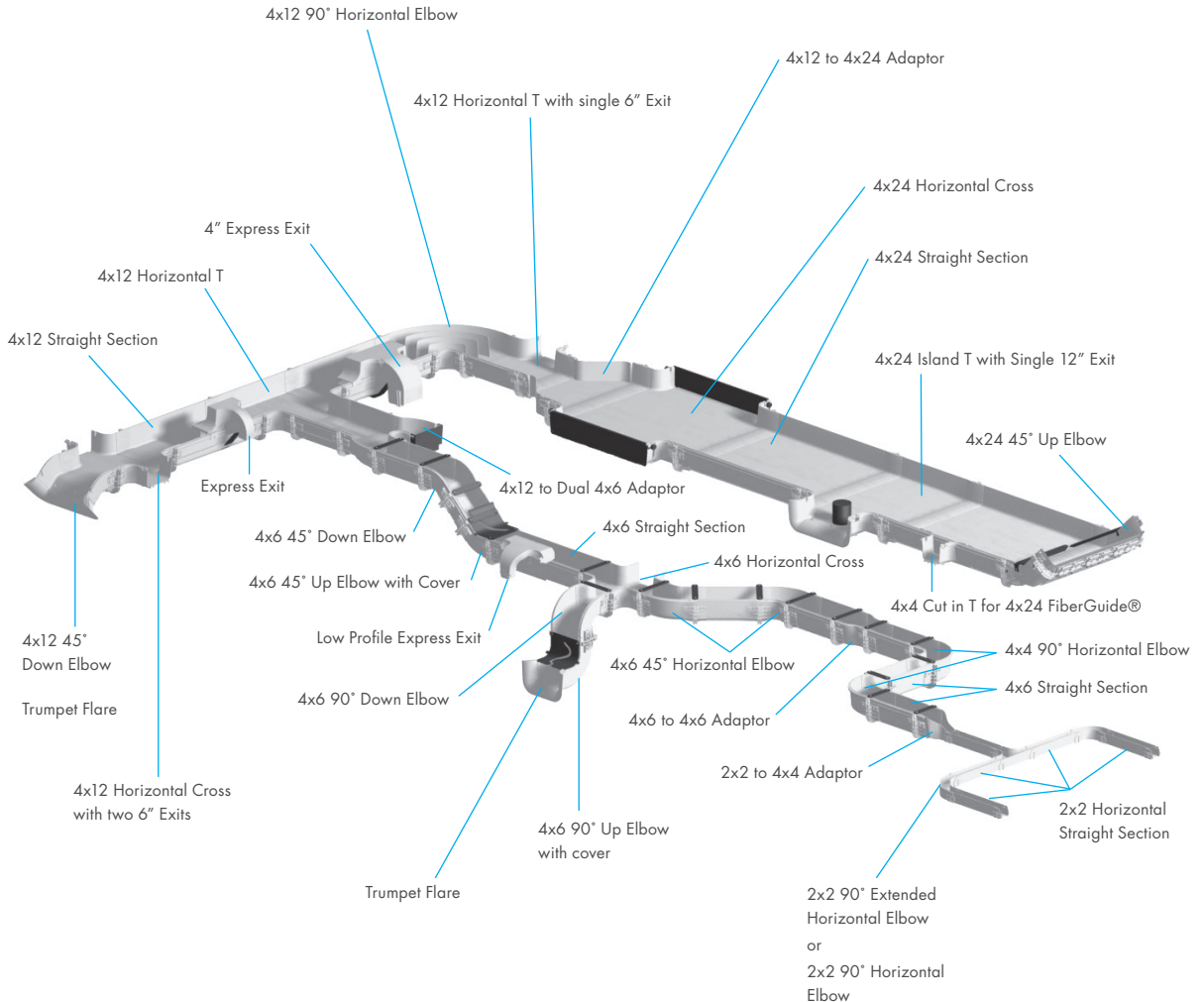


FiberGuide® Fibre Management Systems

A large, curved, yellow fiber optic raceway system is shown, with many fibers running through it. The system is illuminated with a warm, yellow light, and the fibers are bundled together in a dense, organized manner. The raceway is made of several curved sections, and the fibers are held in place by small, yellow clips or dividers. The background is dark, making the yellow raceway stand out.

The Industry's most
comprehensive optical
raceway system

The Industry's Most Comprehensive Optical Raceway System



FiberGuide® fibre management systems offer the greatest breadth of optical raceway products adding greater flexibility and driving down installation time to ensure a smooth deployment.

Basic components include horizontal and vertical straight sections, horizontal and vertical elbows, downspouts, junctions and numerous support hardware and flex tube kits.

Available in a variety of sizes:

2x2"

Ideal for smaller installations or for vertical routing of a maximum of 400 x 2mm fibre optic cords

2x6"

Designed for height restricted environments. Saves 2 inches (50mm) of overhead space

4x4"

Engineered to allow straight sections to be self-supporting over a span of up to 1.83m (6 feet)

4x6"

Features the same benefits of the 4 inch system and a maximum trough capacity of 2,400 x 2mm patch leads

4x12"

Has a maximum capacity to support nearly 5,000 x 2mm patch leads. Perfect for runs over fibre frame line-ups and perimeter routes

4x24"

The ultimate raceway solution to securely route and protect patch leads over high-density optical distribution frames

Features & Benefits

Speed of Installation

FiberGuide® systems are designed for quick and easy installation. Express Exit™ drops as well as tool-less products including Snap-Fit™ junctions, snap-on covers and new hinged cover options save valuable time for installers.

Speed of Deployment

Express Exits™ enable new drops to be added or removed quickly and easily. A drop can be added into a fully loaded raceway in seconds—without cutting.

Raceway Flexibility

FiberGuide® features 38 support structures, over 75 fittings, multiple drop options and several other components to suit any application you create.

Fibre Protection

A two inch minimum bend radius is maintained throughout the system regardless of the raceway size.

Strength and Durability

100% raceway reliability—stands up to any challenge.

Patch Lead Densities

Recommended and Maximum Patch Lead Densities

Recommended capacity takes into consideration random jumper placement into the FiberGuide® system. Maximum density refers to the maximum number of fibre leads in a given cross-section of a FiberGuide® installation.

Recommended/Maximum Density

1.2mm Patch Leads (per in ²)	1.7mm Patch Leads (per in ²)	2.0mm Patch Leads (per in ²)	3.0mm Patch Leads (per in ²)
250/285	120/142	90/102	40/44

Trough Pileup Recommended/Maximum Density

		2 Inch	3 Inch	4 Inch
4x24 System	1.2mm	12,000/13,680	18,000/20,520	24,000/27,360
	1.7mm	5,760/6,816	8,640/10,224	11,520/13,632
	2.0mm	4,320/4,869	6,480/7,344	8,640/9,792
	3.0mm	1,920/2,112	2,880/3,168	3,840/4,224
4x12 System	1.2mm	6,000/6,840	9,000/10,260	12,000/13,680
	1.7mm	2,880/3,408	4,320/5,112	5,760/6,816
	2.0mm	2,160/2,448	3,240/3,672	4,320/4,896
	3.0mm	960/994	1,440/1,584	1,920/2,112
4x6 System	1.2mm	3,000/3,420	4,500/5,130	6,000/6,840
	1.7mm	1,440/1,704	2,160/2,556	2,880/3,408
	2.0mm	1,080/1,224	1,620/1,836	2,160/2,448
	3.0mm	480/528	720/792	960/1,056
4x4 System	1.2mm	2,000/2,280	3,000/3,420	4,500/4,560
	1.7mm	960/1,136	1,440/1,704	1,920/2,272
	2.0mm	720/816	1,080/1,224	1,440/1,632
	3.0mm	320/352	480/528	640/704
2x6 System	1.2mm	3,000/3,492	-	-
	1.7mm	1,440/1,740	-	-
	2.0mm	1,080/1,224	-	-
	3.0mm	480/528	-	-
2x2 System	1.2mm	1,000/1,140	-	-
	1.7mm	480/568	-	-
	2.0mm	360/408	-	-
	3.0mm	160/176	-	-



Ordering Information

Stock and Availability

At Comtec we carry a significant stock holding of FiberGuide® products. Orders can be placed via telephone or online for next day delivery.

Design Service

Need assistance with your design? Send us your overhead plans and we will overlay a FiberGuide® design for you. Site visits also possible to book.

Head Office

Orderphone 01480 415000

Email sales@comtecdirect.co.uk

Glasgow

Orderphone 0141 564 1234

Email glasgow@comtecdirect.co.uk

Sunbury

Orderphone 0844 844 4444

Email sunbury@comtecdirect.co.uk

Online

www.comtecdirect.co.uk

Contents

Materials Statement Page	6
FiberGuide Straight Sections.....	7
FiberGuide Straight Section Covers	8
FiberGuide Expandable Straights.....	8
FiberGuide Straight Adaptors	9
FiberGuide Horizontal Bends	10
FiberGuide Horizontal Bend Covers	10
FiberGuide Vertical Bends	11
FiberGuide Vertical Bend Covers.....	12
FiberGuide Horizontal Tee Pieces.....	13
FiberGuide Horizontal Tee Piece Cover.....	14
FiberGuide Horizontal Cross Pieces.....	15
FiberGuide Horizontal Cross Piece Covers	15
FiberGuide Downspouts and Covers	16
FiberGuide Junctions and Snap-Fits	17
FiberGuide End Caps.....	17
FiberGuide Express Exits and Covers.....	18
FiberGuide Trumpet Flares	19
FiberGuide Support Brackets	20
FiberGuide Raceway Tools	21
FiberGuide Accessories.....	21
FiberGuide Vertical Slotted Duct.....	22
Quick Reference Guide	23



FiberGuide® Material Product Statement

The FiberGuide® fibre management system is a UL-listed (E151158) general purpose fibre optic raceway system. All FiberGuide® products are manufactured from flame-retardant materials. No FiberGuide® system parts contain PVC. The table below summarises the fire-resistant properties of FiberGuide® straight sections, moulded parts and flex tube.

Flammability Rating

	Raw Material	Finished Product	Equivalent European Standards	
FiberGuide Straight Sections (All FiberGuide Systems)	Flame rated: UL94V-0	UL94V-0 and UL2024	ISO ISO 1210:1992	IEC 60695-11-10 1999
FiberGuide Moulded Fittings (All FiberGuide Systems)	Flame rated: UL94V-0	UL94V-0 and UL2024	ISO ISO 1210:1992	IEC 60695-11-10 1999
FiberGuide Flex Tube (2")	Flame rated: UL94V-0	UL2024	ISO ISO 1210:1992	IEC 60695-11-10 1999
FiberGuide Flex Tube (1 ")	Flame rated: UL94V-0	UL2024	ISO ISO 1210:1992	IEC 60695-11-10 1999
FiberGuide Flex Tube (7/8")	Flame rated: UL94V-2	UL2024	BS EN ISO 9239- 1 :2000	-

Note: FiberGuide® flex tube complies with the National Electrical Code (NEC) Article 770-51 and Underwriters Laboratory UL2024 requirements for General Purpose Fibre Optic Raceways.

FiberGuide® is LSZH

FiberGuide® material is ECO-label compliant and LSZH – contains a halogen content of less than 0.2% by weight.

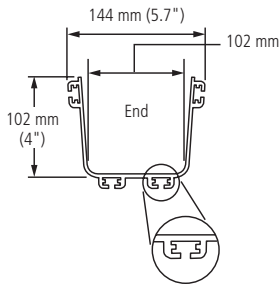
The only halogen found in FiberGuide® is a small amount of fluorine, which is added to the resin in the form of a Teflon anti-drip agent which is necessary to meet the UL 9 V-0 rating.

	Raw Material
Material	ABS
Halogen Free	Yes
Dioxins	No
Carcinogenic when burnt	No
Safe to incinerate	Yes

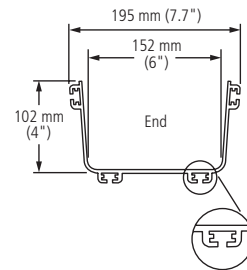
FiberGuide Straight Sections

A U-shaped trough that provides a protective raceway for optical fibres

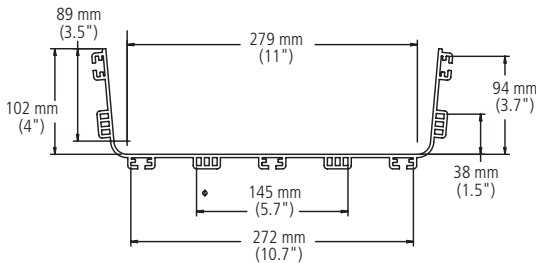
- Available in 6ft lengths
- Carries fibres horizontally throughout the system
- Can be installed vertically when routing around obstacles
- 2x2 includes cover. For hinged and snap-on covers for other sizes please see next page



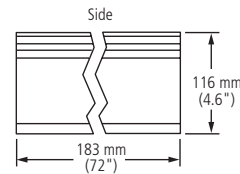
Horizontal Straight Section
(FGS-MSHS-A)



Horizontal Straight Section
(FGS-MSHS-B)



Straight Section
(FGS-MSHS-F)



Item	Description	Size	Type	Material	Mfr Ref	Colour	Length	UoM
791894	FiberGuide	2x2	Straight Inc. Cover	Plastic LSZH	FGS-MSHA-C	Yellow	6ft	Each
799983	FiberGuide	4x4	Straight	Plastic LSZH	FGS-MSHS-A	Yellow	6ft	Each
799985	FiberGuide	4x6	Straight	Plastic LSZH	FGS-MSHS-B	Yellow	6ft	Each
788027	FiberGuide	4x12	Straight	Plastic LSZH	FGS-MSHS-F	Yellow	6ft	Each
801340	FiberGuide	4x24	Straight	Plastic LSZH	FGS-MSHS-H	Yellow	6ft	Each

FiberGuide Straight Section Covers

Hinged and snap-on covers for straight sections

- Hinged cover kits include mounting hinges and clips
- Snap-on covers include capture clips with mounting clasps



Snap-On



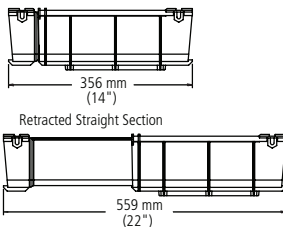
Hinged

Item	Description	Size	Type	Material	Mfr Ref	Colour	Length	UoM
799984	FiberGuide	4x4	Straight Snap on Lid	Plastic LSZH	FGS-MSSC-A	Yellow	6ft	Each
799986	FiberGuide	4x6	Straight Snap on Lid	Plastic LSZH	FGS-MSSC-B/G	Yellow	6ft	Each
788028	FiberGuide	4x12	Straight Snap on Lid	Plastic LSZH	FGS-MSSC-F	Yellow	6ft	Each
801341	FiberGuide	4x4	Straight Hinged Cover	Plastic LSZH	FGS-MSNC-A	Yellow	6ft	Each
801342	FiberGuide	4x6	Straight Hinged Cover	Plastic LSZH	FGS-MSNC-B	Yellow	6ft	Each
801343	FiberGuide	4x12	Straight Hinged Cover	Plastic LSZH	FGS-MSNC-F	Yellow	6ft	Each

FiberGuide Expandable Straights

Expandable straight sections of FiberGuide

- Sliding design bridges gaps without cutting and joining



Expandable Straight Section
(FGS-MVAR-A)

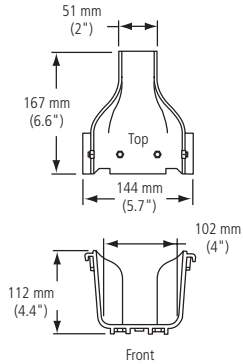


Item	Description	Size	Type	Material	Mfr Ref	Colour	Length	UoM
801189	FiberGuide	4x4	Expandable Straight	Plastic LSZH	FGS-MVAR-A	Yellow	Each	Each
800598	FiberGuide	4x6	Expandable Straight	Plastic LSZH	FGS-MVAR-B	Yellow	Each	Each

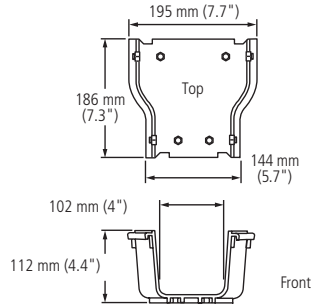
FiberGuide Straight Adaptors

Straight adaptors for reducing the profile of FiberGuide

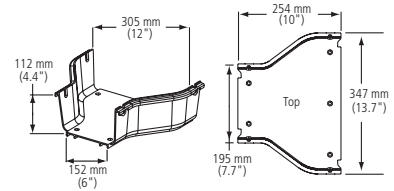
- Enable sections of FiberGuide with different profiles to be joined together
- Snap-fit design



2x2 to 4x4 Straight Adaptor
(FGS-MDSA-AC)



4x4 to 4x6 Straight Adaptor
(FGS-MDSA-AB)



4x12 to 4x6 Adaptor
(FGS-MDSA-FB)

Item	Description	Size	Type	Material	Mfr Ref	Colour	UoM
805731	FiberGuide	2x2/4x4	Straight Adaptor	Plastic LSZH	FGS-MDSA-AC	Yellow	Each
800006	FiberGuide	4x4/4x6	Straight Adaptor	Plastic LSZH	FGS-MDSA-AB	Yellow	Each
800330	FiberGuide	4x12/4x6	Straight Adaptor	Plastic LSZH	FGS-MDSA-FB	Yellow	Each
801318	FiberGuide	4x24/4x12	Straight Adaptor	Plastic LSZH	FGS-MDSA-HF	Black	Each

ORDER ONLINE

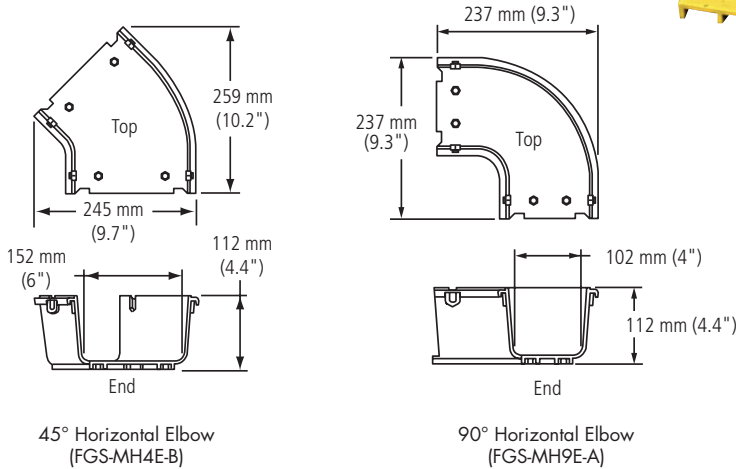
comtecdirect.co.uk



FiberGuide Horizontal Bends

Horizontal elbow fittings are used to change direction and route the fibres in and out of the system

- Snap-on covers available separately, see below



Item	Description	Size	Type	Material	Mfr Ref	Colour	UoM
801200	FiberGuide	4x6	45 Degree Horizontal Bend	Plastic LSZH	FGS-MH4E-B	Yellow	Each
801331	FiberGuide	4x24	45 Degree Horizontal Bend	Plastic LSZH	FGS-MH4E-H	Yellow	Each
801332	FiberGuide	2x2	90 Degree Horizontal Bend	Plastic LSZH	FGS-MH9A-C	Yellow	Each
797532	FiberGuide	4x4	90 Degree Horizontal Bend	Plastic LSZH	FGS-MH9E-A	Yellow	Each
790865	FiberGuide	4x6	90 Degree Horizontal Bend	Plastic LSZH	FGS-MH9E-B	Yellow	Each
800589	FiberGuide	4x12	90 Degree Horizontal Bend	Plastic LSZH	FGS-MH9E-F	Yellow	Each

FiberGuide Horizontal Bend Covers

Snap-on covers for horizontal bends

- Provide protection of fibre cables
- Prevent cables from spilling out of FiberGuide duct
- Easy to fit and remove



Item	Description	Size	Type	Material	Mfr Ref	Colour	UoM
797533	FiberGuide	4x4	90 Degree Horizontal Bend Cover	Plastic LSZH	FGS-SH9E-A	Yellow	Each
790866	FiberGuide	4x6	90 Degree Horizontal Bend Cover	Plastic LSZH	FGS-SH9E-B	Yellow	Each
801350	FiberGuide	4x12	90 Degree Horizontal Bend Cover	Plastic LSZH	FGS-SH9E-F	Yellow	Each

FiberGuide Vertical Bends

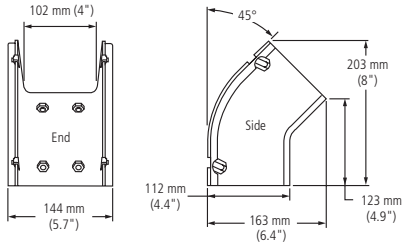
Vertical elbow fittings are used to change direction and route the fibres in and out of the system

- Snap-on covers available separately, see next page

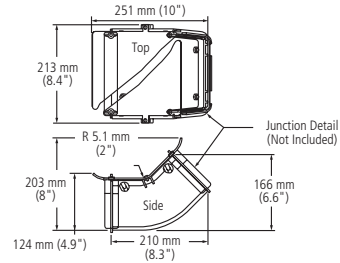


Down

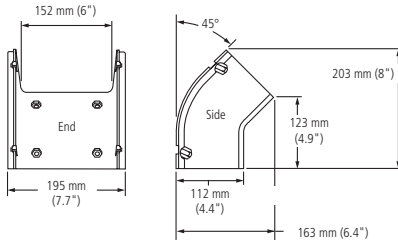
Up



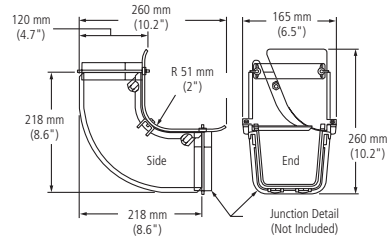
45° Down Elbow
(FGS-MD4E-A)



45° Up Elbow
(FGS-MU4E-B)



45° Down Elbow
(FGS-MD4E-B)



90° Up Elbow
(FGS-MU9E-A)

Item	Description	Size	Type	Material	Mfr Ref	Colour	UoM
795951	FiberGuide	4x4	Elbow Down 45 Degree	Plastic LSZH	FGS-MD4E-A	Yellow	Each
801314	FiberGuide	4x6	Elbow Down 45 Degree	Plastic LSZH	FGS-MD4E-B	Yellow	Each
794919	FiberGuide	4x12	Elbow Down 45 Degree	Plastic LSZH	FGS-MD4E-F	Yellow	Each
801316	FiberGuide	4x24	Elbow Down 45 Degree	Plastic LSZH	FGS-MD4E-H	Black	Each
800258	FiberGuide	4x4	Elbow Down 90 Degree	Plastic LSZH	FGS-MD9E-A	Yellow	Each
794922	FiberGuide	4x6	Elbow Down 90 Degree	Plastic LSZH	FGS-MD9E-B	Yellow	Each
788024	FiberGuide	4x12	Elbow Down 90 Degree	Plastic LSZH	FGS-MD9E-F	Yellow	Each
801064	FiberGuide	4x4	Elbow Up 45 Degree Inc. Cover	Plastic LSZH	FGS-MU4E-A	Yellow	Each
801199	FiberGuide	4x6	Elbow Up 45 Degree Inc. Cover	Plastic LSZH	FGS-MU4E-B	Yellow	Each
794918	FiberGuide	4x12	Elbow Up 45 Degree	Plastic LSZH	FGS-MU4E-F	Yellow	Each
800260	FiberGuide	4x4	Elbow Up 90 Degree Inc. Cover	Plastic LSZH	FGS-MU9E-A	Yellow	Each
796068	FiberGuide	4x6	Elbow Up 90 Degree Inc. Cover	Plastic LSZH	FGS-MU9E-B	Yellow	Each

FiberGuide Vertical Bend Covers

Snap-on covers for vertical bends

- Provide protection to fibre optic cables
- Prevent cables from spilling from FiberGuide duct
- Easy to fit and remove



Item	Description	Size	Type	Material	Mfr Ref	Colour	UoM
795952	FiberGuide	4x4	Elbow Down 45 Degree Cover	Plastic LSZH	FGS-SD4E-A	Yellow	Each
803800	FiberGuide	4x6	Elbow Down 45 Degree Cover	Plastic LSZH	FGS-SD4E-B	Yellow	Each
815604	FiberGuide	4x12	Elbow Down 45 Degree Cover	Plastic LSZH	FGS-SD4E-F	Yellow	Each
800259	FiberGuide	4x4	Elbow Down 90 Degree Cover	Plastic LSZH	FGS-SD9E-A	Yellow	Each
794923	FiberGuide	4x6	Elbow Down 90 Degree Cover	Plastic LSZH	FGS-SD9E-B	Yellow	Each
801352	FiberGuide	4x12	Elbow Up 45 Degree Cover	Plastic LSZH	FGS-SU4E-F	Yellow	Each



NEED ASSISTANCE?

01480 415000 (Head Office)

0141 564 1234 (Glasgow)

0844 844 4444 (Sunbury)

FiberGuide Horizontal Tee Pieces

Horizontal tee piece fittings

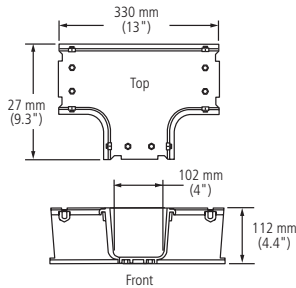
- Snap-on covers available separately, see page 14



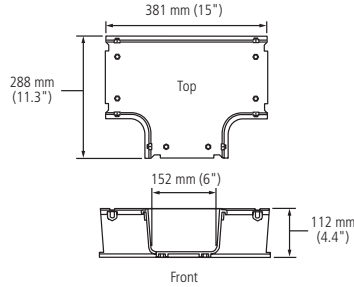
Tee Piece

Cut-In Tee Piece

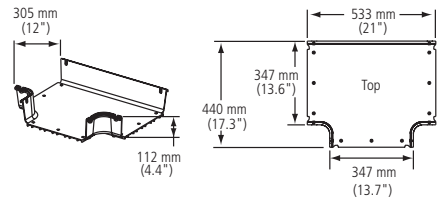
Tee Piece with Reduced Exit



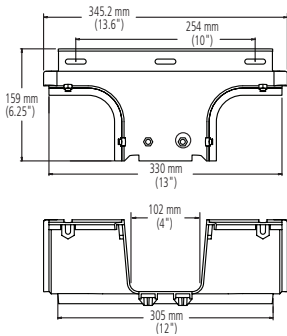
Horizontal Tee (FGS-MHRT-A)



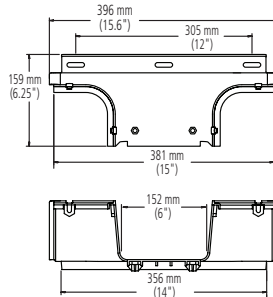
Horizontal Tee (FGS-MHRT-B)



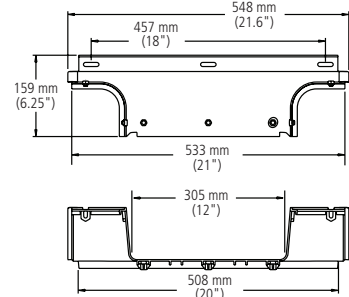
Horizontal Tee (FGS-MHRT-F)



4" Cut-in Tee (FGS-MHIS-A)



6" Cut-in Tee (FGS-MHIS-B)



12" Cut-in Tee (FGS-MHIS-F)

Item	Description	Size	Type	Material	Mfr Ref	Colour	UoM
800255	FiberGuide	4x4	Horizontal Tee Piece	Plastic LSZH	FGS-MHRT-A	Yellow	Each
790863	FiberGuide	4x6	Horizontal Tee Piece	Plastic LSZH	FGS-MHRT-B	Yellow	Each
800326	FiberGuide	4x12	Horizontal Tee Piece	Plastic LSZH	FGS-MHRT-F	Yellow	Each
801336	FiberGuide	4x24	Horizontal Tee Piece	Plastic LSZH	FGS-MHRT-H	Yellow	Each
800825	FiberGuide	4x12	Horizontal Tee Piece with 4x6 Exit	Plastic LSZH	FGS-MHRT-FB	Yellow	Each
801335	FiberGuide	4x24	Horizontal Tee Piece with 4x12 Exit	Plastic LSZH	FGS-MHRT-H/F	Yellow	Each
801201	FiberGuide	4x4	Horizontal Cut-In Tee Piece	Plastic LSZH	FGS-MHIS-A	Yellow	Each
801334	FiberGuide	4x6	Horizontal Cut-In Tee Piece	Plastic LSZH	FGS-MHIS-B	Yellow	Each
802765	FiberGuide	4x12	Horizontal Cut-In Tee Piece	Plastic LSZH	FGS-MHIS-F	Yellow	Each

FiberGuide Horizontal Tee Piece Cover

Snap-on covers for horizontal tee piece

- Protects fibre optic cables
- Prevents cables from spilling from FiberGuide duct
- Easy to fit and remove



Item	Description	Size	Type	Material	Mfr Ref	Colour	UoM
800003	FiberGuide	4x4	Horizontal Tee Piece Cover	Plastic LSZH	FGS-SHRT-A	Yellow	Each
790864	FiberGuide	4x6	Horizontal Tee Piece Cover	Plastic LSZH	FGS-SHRT-B	Yellow	Each
801351	FiberGuide	4x12	Horizontal Tee Piece Cover	Plastic LSZH	FGS-SHRT-F	Yellow	Each

FULL
COMMSCOPE®
RANGE
ONLINE



comtecdirect.co.uk

FiberGuide Horizontal Cross Pieces

Horizontal cross pieces

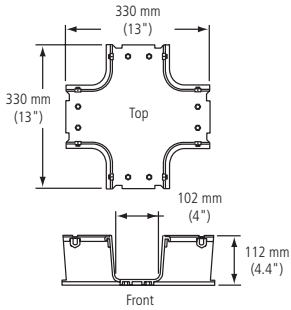
- Snap-on covers available separately, see below



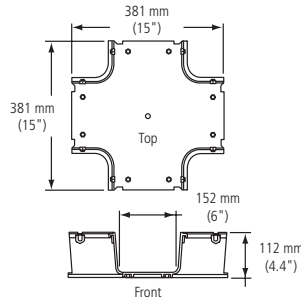
Cross Piece



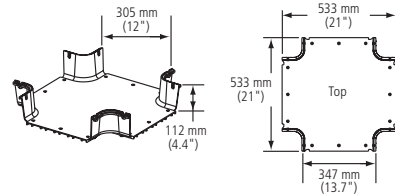
Cross Piece with Reduced Exits



Horizontal Cross (FGS-MHXP-A)



Horizontal Cross (FGS-MHXP-B)



Horizontal Cross (FGS-MHXP-F)

Item	Description	Size	Type	Material	Mfr Ref	Colour	UoM
800256	FiberGuide	4x4	Horizontal Cross Piece	Plastic LSZH	FGS-MHXP-A	Yellow	Each
800004	FiberGuide	4x6	Horizontal Cross Piece	Plastic LSZH	FGS-MHXP-B	Yellow	Each
800329	FiberGuide	4x12	Horizontal Cross Piece	Plastic LSZH	FGS-MHXP-F	Yellow	Each
801338	FiberGuide	4x24	Horizontal Cross Piece	Plastic LSZH	FGS-MHXP-H	Yellow	Each
800327	FiberGuide	4x12	Horizontal Cross Piece with 4x6 Exits	Plastic LSZH	FGS-MHXP-BF	Yellow	Each
801337	FiberGuide	4x24	Horizontal Cross Piece with 4x12 Exits	Plastic LSZH	FGS-MHXP-FH	Yellow	Each

FiberGuide Horizontal Cross Piece Covers

Snap-on covers for horizontal cross pieces

- Protect fibre optic cables
- Prevent cables from spilling from FiberGuide duct
- Easy to fit and remove

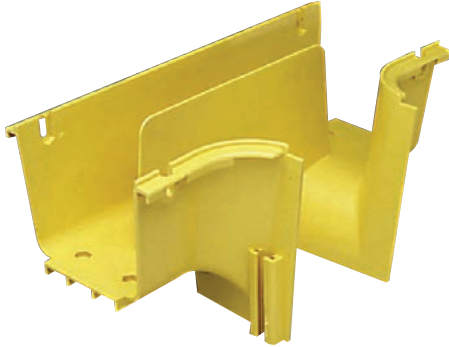


Item	Description	Size	Type	Material	Mfr Ref	Colour	UoM
800257	FiberGuide	4x4	Horizontal Cross Piece Cover	Plastic LSZH	FGS-SHXP-A	Yellow	Each
800250	FiberGuide	4x6	Horizontal Cross Piece Cover	Plastic LSZH	FGS-SHXP-B	Yellow	Each
806030	FiberGuide	4x12	Horizontal Cross Piece Cover	Plastic LSZH	FGS-SHXP-F	Yellow	Each

FiberGuide Downspouts and Covers

Downspouts feed fibre from overhead straight sections into fibre optic equipment below

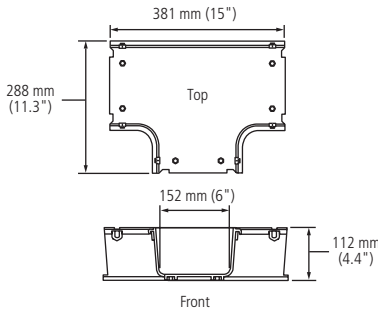
- Rounded corners prevent damage to fibre
- Partition wall in duct helps to manage fibres



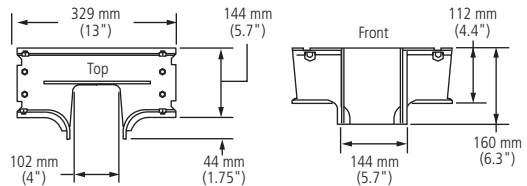
Downspout



Extended Downspout



Downspout
(FGS-MDSP-B)



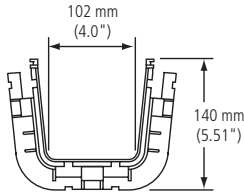
Downspout
(FGS-MDSP-A)

Item	Description	Size	Type	Material	Mfr Ref	Colour	UoM
805732	FiberGuide	2x2	Downspout with Cover	Plastic LSZH	FGS-MSDS-C	Yellow	Each
800007	FiberGuide	4x4	Downspout	Plastic LSZH	FGS-MDSP-A	Yellow	Each
788035	FiberGuide	4x6	Downspout	Plastic LSZH	FGS-MDSP-B	Yellow	Each
801325	FiberGuide	4x12	Downspout	Plastic LSZH	FGS-MDSP-F	Yellow	Each
800961	FiberGuide	4x4	Extended Downspout	Plastic LSZH	FGS-MDSP-EX-A	Yellow	Each
801324	FiberGuide	4x6	Extended Downspout	Plastic LSZH	FGS-MDSP-EX-B	Yellow	Each
801319	FiberGuide	4x6	Downspout with Dual 4x4 Exits	Plastic LSZH	FGS-MDSP-2B	Yellow	Each
801322	FiberGuide	4x12	Downspout with Divider & Dual 4x6 Exits	Plastic LSZH	FGS-MDSP-2F-IMP	Yellow	Each
788036	FiberGuide	4x4/4x6	Downspout Cover	Plastic LSZH	FGS-MCDS-AB	Yellow	Each
803080	FiberGuide	4x12	Downspout Cover	Plastic LSZH	FGS-SDSP-F	Yellow	Each
802630	FiberGuide	4x4/4x6	Extended Downspout Cover	Plastic LSZH	FGS-MCDS-EX-AB	Yellow	Each

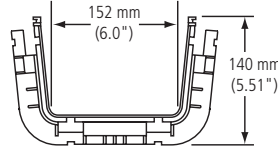
FiberGuide Junctions and Snap-Fits

Junctions and snap-fit junctions for joining FiberGuide sections

- No tools are required for installation or removal
- A warning label indicating caution around fibre optic cable is included
- Snap-fit junctions exhibit superior holding force and accommodates support brackets



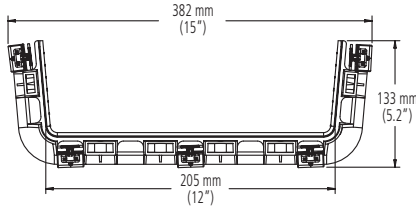
Snap-Fit Junction
(FGS-MFAW-A)



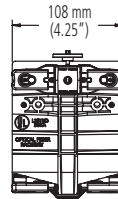
Snap-Fit Junction Assembly
(FGS-MFAW-B)



Snap-Fit Coupler



Snap-Fit Junction
(FGS-MFAW-F)



Item	Description	Size	Type	Material	Mfr Ref	Colour	UoM
805910	FiberGuide	2x2	Junction	Plastic LSZH	FGS-MJWR-C	Yellow	Each
803011	FiberGuide	2x2	Modified Junction	Plastic LSZH	FGS-MJWRM-C	Yellow	Each
800001	FiberGuide	4x4	Snap-Fit Coupler	Plastic LSZH	FGS-MFAW-A	Yellow	Each
800002	FiberGuide	4x6	Snap-Fit Coupler	Plastic LSZH	FGS-MFAW-B	Yellow	Each
788749	FiberGuide	4x12	Snap-Fit Coupler	Plastic LSZH	FGS-MFAW-F	Yellow	Each
801329	FiberGuide	4x24	Snap-Fit Coupler	Plastic LSZH	FGS-MFAW-H	Yellow	Each

FiberGuide End Caps

For covering open ends of FiberGuide duct runs

- Prevent fibre cables from spilling from FiberGuide duct
- Easy to fit and remove

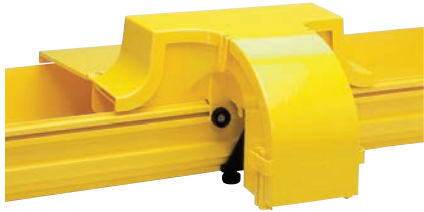


Item	Description	Size	Type	Material	Mfr Ref	Colour	UoM
795950	FiberGuide	4x4	End Cover Kit	Plastic LSZH	FGS-HMEC-A	Black	Each
800005	FiberGuide	4x6	End Cover Kit	Plastic LSZH	FGS-HMEC-B	Black	Each
794920	FiberGuide	4x12	End Cover Kit	Plastic LSZH	FGS-HMEC-F	Black	Each
801013	FiberGuide	4x24	End Cover Kit	Plastic LSZH	FGS-HMEC-H	Black	Each

FiberGuide Express Exits and Covers

Express exits are designed to distribute and manage medium cable counts to FOT or ODF equipment

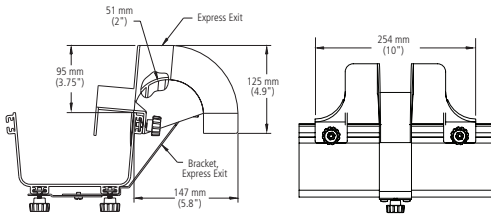
- Kits include insertable exit fins and removable rear cable guides
- Guarantees 2 inch bend radius protection



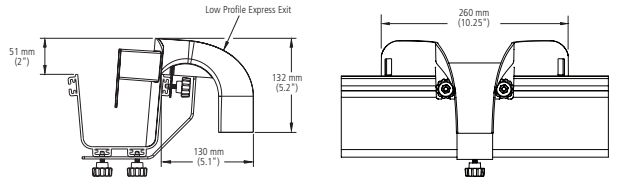
Express Exit



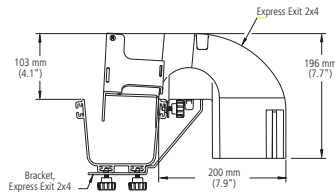
Rear Cover (Hinged)



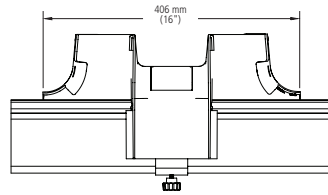
2" Express Exit (FGS-MEXP-A/B/F; fits 4x4, 4x6 and 4x12 systems; shown attached to 4x6 straight section)



Low-Profile Express Exit (FGS-MEXP-LP-A/B/F; fits 4x4, 4x6 and 4x12 systems; shown attached to 4x4 straight section)



4" Express Exit (FGS-MEXP-E-A/B/F shown attached to 4x4 straight section)

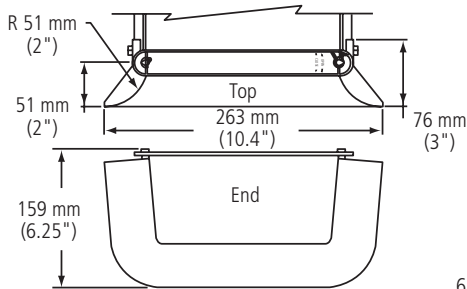
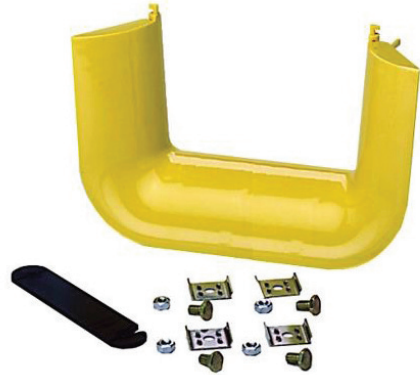


Item	Description	Size	Type	Material	Mfr Ref	Colour	UoM
797528	FiberGuide	2x2	Express Exit Kit (2x2 Exit)	Plastic LSZH	FGS-MEXP-A/B/F	Yellow	Each
793177	FiberGuide	2x2	Express Exit Kit Low-Profile (2x2 Exit)	Plastic LSZH	FGS-MEXP-LP-A/B/F	Yellow	Each
800597	FiberGuide	4x4	Express Exit Kit (4x4 Exit)	Plastic LSZH	FGS-MEXP-E-A/B/F	Yellow	Each
800601	FiberGuide	4x4	Rear Cover (Hinged) for Express Exit	Plastic LSZH	FGS-MEXC-E-A	Yellow	Each
800335	FiberGuide	4x6	Rear Cover (Hinged) for Express Exit	Plastic LSZH	FGS-MEXC-E-B	Yellow	Each
801188	FiberGuide	4x12	Rear Cover (Hinged) for Express Exit	Plastic LSZH	FGS-MEXC-E-F	Yellow	Each

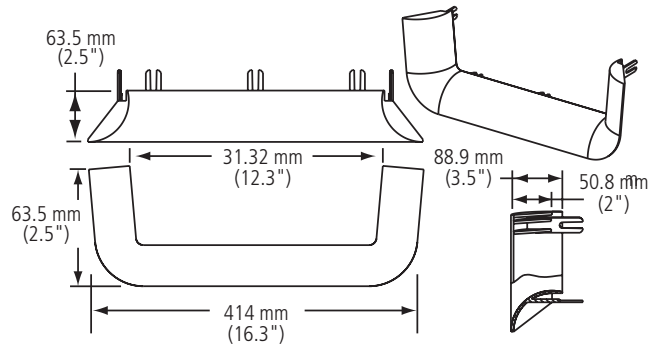
FiberGuide Trumpet Flares

Trumpet flares are recommended for use at the bottom of a downspout when directing fibres into a fibre distribution bay

- Provide bend radius protection
- Allow a large number of fibre patch leads to transition into a fibre bay
- A 4x4 trumpet flare is used for the 4x4 and 4x6 downspouts
- A 4x6 trumpet flare is used for the 4x12 downspout



Trumpet Flare
(FGS-MTRM-B)



Trumpet Flare
(FGS-MTRM-F)

Item	Description	Size	Type	Material	Mfr Ref	Colour	UoM
800265	FiberGuide	2x2	Trumpet Flare	Plastic LSZH	FGS-MTRM-C	Yellow	Each
788038	FiberGuide	4x4	Trumpet Flare	Plastic LSZH	FGS-MTRM-A	Yellow	Each
790867	FiberGuide	4x6	Trumpet Flare	Plastic LSZH	FGS-MTRM-B	Yellow	Each
801344	FiberGuide	4x6	Trumpet Flare for Dual Downspout (2x FGS-MTRM-A)	Plastic LSZH	FGS-MTRM-2B	Yellow	Each
800328	FiberGuide	4x12	Trumpet Flare	Plastic LSZH	FGS-MTRM-F	Yellow	Each
801346	FiberGuide	4x24	Trumpet Flare	Plastic LSZH	FGS-MTRM-H	Yellow	Each

FiberGuide Support Brackets

A range of support kits and brackets to support the FiberGuide system

- Supplied with necessary fixings



Ladder Rack Bracket Kit



Threaded Rod Bracket Kit



Centre Support Bracket Kit



Top Support C Bracket Rod



Underfloor Bracket



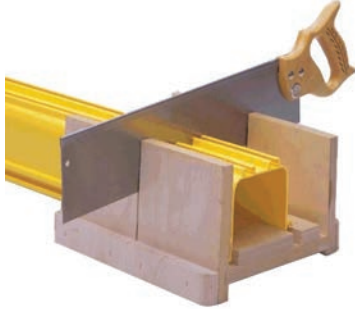
Unistrut Nut Kit

Item	Description	Type	Rod Size	For Use With	Mfr Ref	UoM
800331	FiberGuide	Existing Threaded Rod Kit	12mm	for 2/4/6 Inch Raceway	FGS-HETR-12MM	Each
801008	FiberGuide	Existing Threaded Rod Kit	12mm	for 12 Inch Raceway	FGS-HETR-F-12MM	Each
790868	FiberGuide	Threaded Rod Bracket	12mm	for 2/4/6 Inch Raceway	FGS-HNTR-12MM	Each
801019	FiberGuide	Threaded Rod Bracket Kit	12mm	for 12 Inch Raceway	FGS-HNTR-F-12MM	Each
801017	FiberGuide	Threaded Rod Bracket	16mm	for 2/4/6 Inch Raceway	FGS-HNTR-16MM	Each
801020	FiberGuide	Threaded Rod Bracket Kit	16mm	for 12 Inch Raceway	FGS-HNTR-F-16MM	Each
800332	FiberGuide	Trapeze Bracket	12mm	for 12 Inch Raceway	FGS-HNTP-F-12MM	Each
801015	FiberGuide	Trapeze Bracket	16mm	for 12 Inch Raceway	FGS-HNTP-F-16MM	Each
800592	FiberGuide	Cantilever Ladder Support Bracket		for 2/4/6 Inch Raceway	FGS-HDLB-4	Each
800263	FiberGuide	Top Support C Bracket Rod	12mm	for 2/4/6 Inch Raceway	FGS-HNTS-12MM	Each
800262	FiberGuide	Centre Support Bracket Kit	12mm	for 2/4/6 Inch Raceway	FGS-HTUB-12MM	Each
801310	FiberGuide	Center Support Bracket Kit	12mm	for 12 Inch Raceway	FGS-HTUB-F-12MM	Each
802844	FiberGuide	Top Support C Bracket Rod - Low Profile	12mm	for 2/4/6 Inch Raceway	FGS-HNTS-12MM-LP	Each
801007	FiberGuide	Unistrut Nut Kit	5/8 Inch		FGS-HDGR	Each
797766	FiberGuide	Ladder Rack Bracket Kit	12mm	for 2/4/6/12 Inch Raceway	FGS-HLDR-12MM	Each
802029	FiberGuide	Underfloor Bracket		for 2/4/6 Inch Raceway	FGS-HUFB-A	Each

FiberGuide Raceway Tools

Essential tools for the FiberGuide raceway solution

- Mitre box including saw (816606) for the cutting of 2x2, 4x4, 4x6 and 4x12 straight sections to size
- Cut in tee jig (801073) for use with 4x4, 4x6 and 4x12 straight sections.



Mitre box with saw



Cut in Tee Jig

Item	Description	Size	Type	Material	Mfr Ref	Colour	UoM
816606	FiberGuide	2x2/4x4/4x6 & 4x12	Mitre Box With Saw		FGS-MKIT-ABF		Each
801073	FiberGuide	4x4/4x6/4x12	Cut in Tee Jig	Metal	FGS-MHIS-JIG-A/B/F	Black	Each

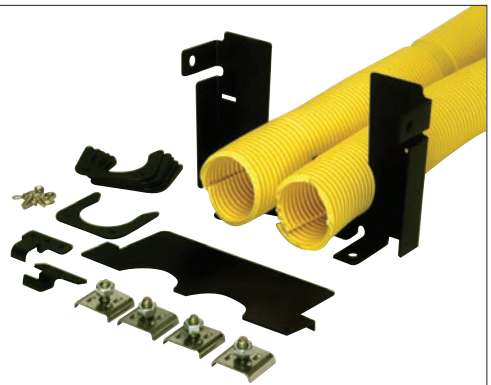
FiberGuide Accessories

FiberGuide accessories including flex tube attachments

- Flexible tubing is 2 inches in diameter and attaches to the end of a straight section with an adaptor



Quick Knobs



Tube Adaptor Kit

Item	Description	Type	Size	Material	Other	Mfr Ref	Colour	UoM
808064	FiberGuide	Flex Tube	2"	Plastic LSZH	2 Inch hose (10ft)	FGS-MIDY-10F	Yellow	Each
796737	FiberGuide	Flex Tube Adaptor Kit	2x2	Plastic LSZH	2 Inch hose (5ft)	FGS-MEX1-C-5F	Yellow	Each
800267	FiberGuide	Flex Tube Adaptor Kit	2x2	Plastic LSZH	Dual 2 Inch hose (5ft)	FGS-KT03-C	Yellow	Each
800333	FiberGuide	Flex Tube Adaptor Kit	4x4	Plastic LSZH	Dual 2 Inch hose (5ft)	FGS-KT03-A	Yellow	Each
801311	FiberGuide	Flex Tube Adaptor Kit	4x4	Plastic LSZH	Quad 2 Inch hose (5ft)	FGS-KT03-A4-5F	Yellow	Each
801400	FiberGuide	1x Hose Adapter Kit Cover	4x4	Plastic LSZH		FGS-KT03-A1	Yellow	Each

Item	Description	Type	Size	Material	Mfr Ref	UoM
800270	FiberGuide	Flex Tube Clamp Kit (for 7/8 Inch Hose)	2x2	Metal	FGS-HSHC-10	Each
795954	FiberGuide	Retainer Ring Kit	-	-	FGS-HFRR-10	Pack Of 10
800261	FiberGuide	Quick Knobs	-	-	FGS-KQKB	Pack Of 10
801006	FiberGuide	Capture Clips	-	-	FGS-DHCP	Pack Of 10

FiberGuide Vertical Slotted Duct

Vertical slotted duct system

- Manage distribution of fibres in vertical cable runs
- Different slot spacings available
- Supplied with mounting brackets



Item	Description	Size	Type	Material	Mfr Ref	Colour	UoM
800334	FiberGuide	2x1	Vertical Slotted Duct (4 Inch Spacing)	Plastic LSZH	FGS-KTW1-E	Yellow	Each
800271	FiberGuide	2x2	Vertical Slotted Duct (1.5 Inch Spacing)	Plastic LSZH	FGS-KTW1-JA	Yellow	Each
801312	FiberGuide	2x2	Vertical Slotted Duct (4 Inch Spacing)	Plastic LSZH	FGS-KTW1-C	Yellow	Each
802194	FiberGuide	2x4	Vertical Slotted Duct (2 Inch Spacing)	Plastic LSZH	FGS-KTW2-R	Yellow	Each
803008	FiberGuide	4x4	Vertical Slotted Duct (4 Inch Spacing)	Plastic LSZH	FGS-MSHS-D	Yellow	Each
801309	FiberGuide	4x2	Vertical Slotted Duct Mounting Bracket	Metal	FGS-HKW2-E		Each



FREE
NEXT DAY DELIVERY
 ON ORDERS OVER £150

Quick Reference Guide

FiberGuide® System Parts Sizing Guide:

FGS-XXXX-C = 2x2"

FGS-XXXX-A = 4x4"

FGS-XXXX-F = 4x12"

FGS-XXXX-G = 2x6"

FGS-XXXX-B = 4x6"

FGS-XXXX-H = 4x24"

FiberGuide® System Codes:

FGS-MSHS-x	-	Straight Lengths (6' - 1.8m)
FGS-MFAW-x	-	Snap-Fit Junctions
FGS-MH*E-x	-	Horizontal Bends (* 4 = 45° / 9 = 90°)
FGS-MU*E-x	-	Up Bends (* 4 = 45° / 9 = 90°)
FGS-MD*E-x	-	Down Bends (* 4 = 45° / 9 = 90°)
FGS-MHRT-xx	-	Horizontal Tee Pieces
FGS-MHXP-xx	-	Horizontal Cross Pieces
FGS-HMEC-x	-	End Caps
FGS-MDSP-xx	-	Downspouts
FGS-MDSA-xx	-	Straight Adaptor Brackets / Reducers
FGS-MHIS-x	-	Horizontal Cut-In Tee Sections
FGS-MEXP-(xx)-A/B/F(G)	-	Express Exit Drops
FGS-HNTR-(x)-xxMM	-	New Threaded Rod Bracket
FGS-HNTS-(x)-xxMM-(xx)	-	Top Support C Bracket
FGS-HNTP-(x)-xxMM	-	Trapeze Bracket
FGS-HTUB-(x)-xxMM	-	Centre Support Bracket
FGS-HETR-(x)-xxMM	-	Existing Threaded Rod Bracket

Comtec Huntingdon

Head Office and Main Distribution Centre

Cardinal Way, Cardinal Distribution Park
Godmanchester
Huntingdon
PE29 2XJ
Phone: +44 (0)1480 415000
Email: sales@comtecdirect.co.uk

Comtec Glasgow

Trade Counter and Sales Office

20 Couper Street
Glasgow
G4 0DL
Phone: +44 (0)141 564 1234
Email: glasgow@comtecdirect.co.uk

Comtec Sunbury

Sales Office

Unit C3 The Dolphin Estate, Windmill Road
Sunbury On Thames
Middlesex
TW16 7HE
Phone: +44 (0)844 844 4444
Email: sunbury@comtecdirect.co.uk