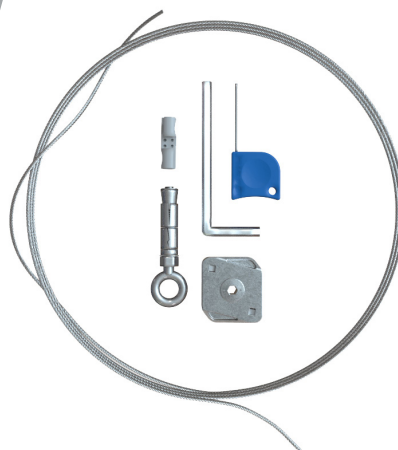


# Fibre Cable Support Kits

Innovative time and material saving method of standing off and supporting fibre optic cables



- Time and labour saving
- 'Out-of-the-box solution'
- Prevents damaged cables



Scan the QR code to find out more about the simplicity of an installation



## World-leading Manufacturer

Employing over 900 people across 15 global locations, we're proud to manufacture across nine sites globally: with sites in the UK, US, Europe and India. Additional sales hubs are located in Chicago, Obernai, Warsaw, Toronto, New Delhi and Kobe. A 100% employee-owned company, we have a unique approach to business, characterised by investment in people, innovation and sustainable growth.

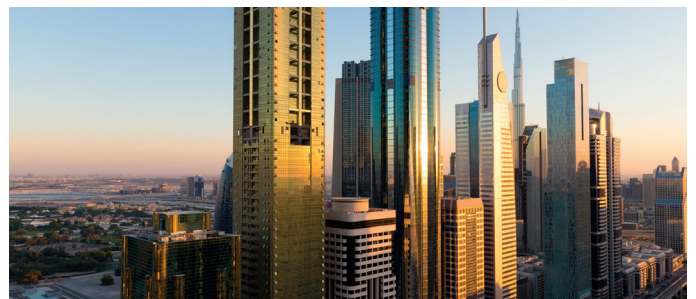
## Our Markets

We supply solutions to four main markets, but our problem-solving culture ensures we're continually exploring new applications and opportunities.



### Civil Construction

Geotechnical engineering solutions for heavy erosion and slope stability, delivering significant time and labour savings, immediate security and aiding vegetation growth.



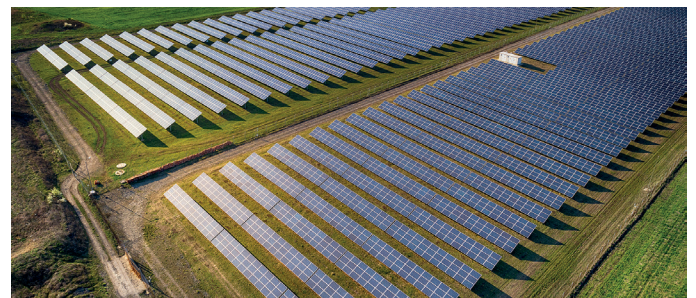
### Building Services

Suspension systems for mechanical, electrical, plumbing, HVAC, lighting, acoustics and signage installations.



### Viticulture, Orchards And Fencing

Wire joiners, tensioners and bracing systems for fencing and fruit trellising applications.



### Solar Solutions

A full range of bracing, anchoring and wire management solutions engineered to improve the stability and strength of solar applications.

# Working Alongside Customers To Deliver Patented Problem-solving Solutions

With an extensive engineering workshop featuring CAD and rapid prototyping capabilities, the team are fully equipped to explore ideas and solve any problems encountered on site.

Working closely with our sales and marketing teams, we strive to consistently deliver complete solutions to our customers. The key to our success is undoubtedly the collaborative work we do with our customers. Our doors are always open and we encourage our customers to approach us with any questions.

## Environmental Commitments

Gripple takes an exemplary approach to long term sustainability. We have an Environmental Management System in place, certified to ISO 14001, and in 2007, were the proud winners of the EEF Environmental Award. Our dedicated Continuous Improvement department are tasked with considering our current operations and adapting our process to consistently improve our sustainability.

As a member of the GLIDE group of employee owned companies, we have a values-driven approach to growing a sustainable business. The GLIDE custodian charter focuses on tools for long term growth and our approach is to put sustainability at the heart of everything we do.

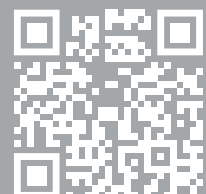
## Minimising Our Environmental Impact

As an experienced manufacturer we recognise our responsibility to reduce our impact on the planet. In recent years, we have maximised our energy efficiency, decreased electricity use, reduced landfill/incinerated waste, increased recycling, conserved our use of raw materials, and minimised our packaging. Our commitment to 'greener' long term investment is characterised by the renovation of our Riverside Works factory in Sheffield, UK – which features over 400 solar panels, the first river water heating system in the region, and an evaporative cooling system.

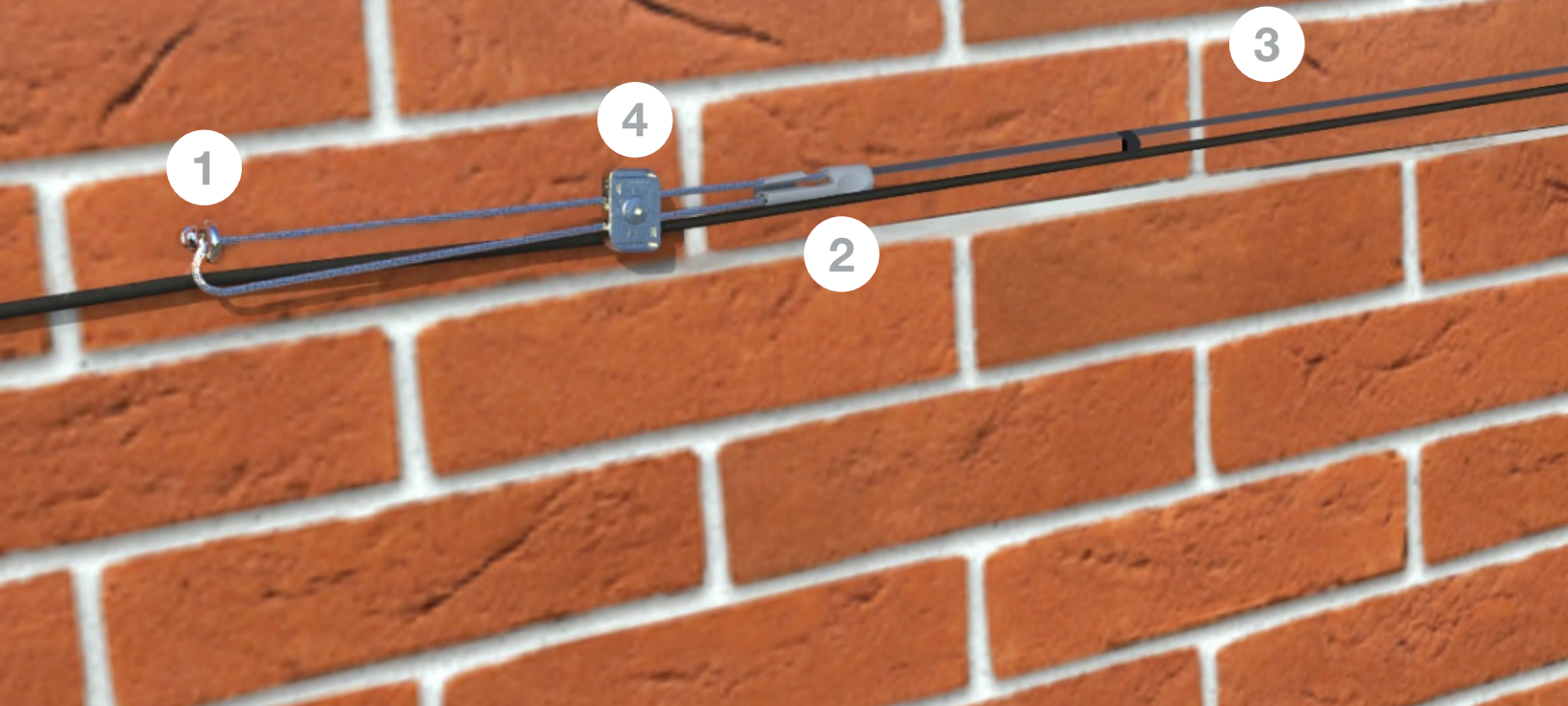
Alongside our commitment to reduce our impact in-house, we also feel that it is important to give back to the community – something which we exercise regularly in our hometown, Sheffield. We're always on the look out for projects which we can get involved with to help within the local community.



Scan the QR Code to find out more about our environmental commitments, Ideas and Innovation department and our dedication to charity.



# Fibre Cable Support Kits



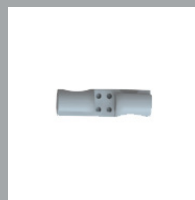
1



## Rawlplug M8 Eyebolt

- 8mm diameter
- Provides up to 90mm clearance

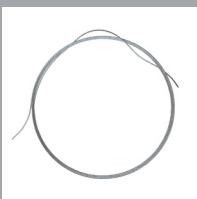
2



## Gripple Twister

- Secures tail wires to improve aesthetics

3



## Wire Rope

- Fused on all wire ends to avoid fraying
- 1x19 wire rope construction for improved anti-corrosion capabilities
- 3mm diameter for minimised visibility

4



## Lockable Plus D3

- Simple, 'push fit' mechanism
- Fully lockable to avoid tampering
- Small profile to improve aesthetic



## The Benefits

### **Time Savings**

Installs in 1/3 of the time which is needed for traditional installation methods

### **An 'out-of-the-box' solution**

All components needed for a full installation are supplied as an 'out-of-the-box' solution

### **Minimised components**

Reduces the number of components which are needed for an installation

### **Cable protection**

Fully protects the cable to prevent damaged fibres and maintain connectivity

### **Reduces on-site cutting**

Removes the need for any on-site cutting

### **Reliability**

Each component is fully tested and frequently used in harsh, outdoor environments

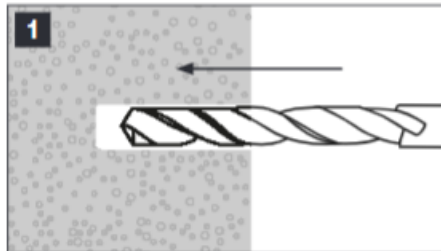
### **Simplicity**

Minimal training is required due to the 'push-fit' nature of the components

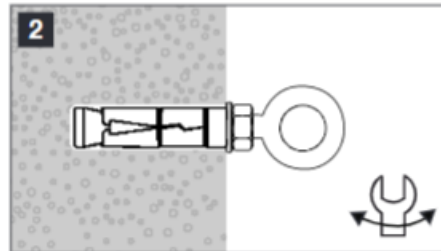
### **Health & Safety**

Minimises the amount of time spent working at height

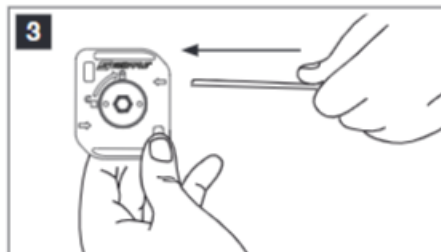
# Installation Steps



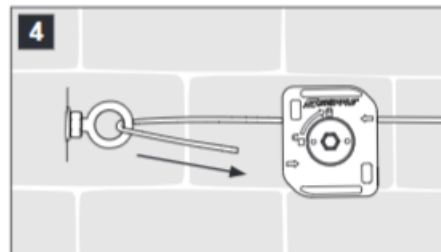
**1**  
Drill a hole of required diameter and depth.  
Note: When fixing into brickwork, mortar joints should be avoided.



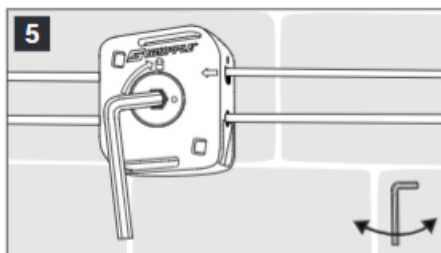
**2**  
Insert the anchor (tap home until flush with surface) and position eye accordingly. Tighten to recommended torque, using the hex nut (not the eye).



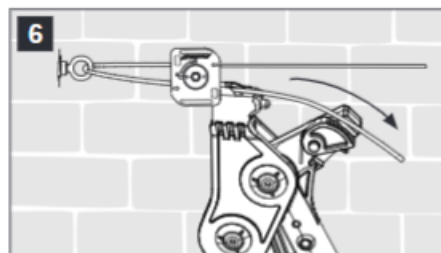
**3**  
Insert the wire into the Lockable Plus using the small arrows for guidance.



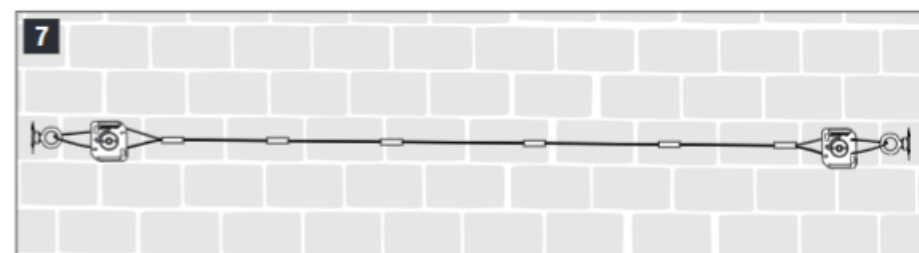
**4**  
Pass the wire through the eyebolt and back through the Lockable Plus using the small arrows for guidance. Make sure to pull through around a hand's-width of tail wire.



**5**  
Use the Allan Key to lock the Lockable Plus.



**6**  
Use the Torq Tensioning Tool, at a maximum load of 100 kg, to add sufficient tension into the system so that the Fibre Cable Support Kit is straight.



**7**  
Attach the Fibre optic Cable to the Fibre Cable Support Kit using your preferred attachment method.

# FAQ'S

## How will the kits be supplied?

The kits will be supplied as an out-of-the-box solution, with all kit contents in the same box. Please contact your local Gripple sales representative for more information on our kit variations.

## How can the fibre optic cable be attached to the catenary wire?

The fibre optic cable can be attached to the catenary wire with whatever means the installer feels is most suitable. Some customers prefer to use Velcro cable ties for simplicity but this doesn't mean that this is the only method of attachment.

## Does the fibre optic cable still need to be attached to the catenary wire at height?

The fibre optic cable can be attached to the catenary wire whilst it is laid on the ground and raised as one unit or attached once the catenary wire has been installed at height. It is entirely down to the user's preference!

## How much tension needs to be placed on the catenary wire?

The catenary wire can be tensioned using the Low Load Torq Tensioning tool which can be supplied alongside the kits. The tool can be adjusted so that the catenary wire is tensioned sufficiently without the risk of over-tensioning. Please contact your local Gripple sales representative for more information.

## What lengths are the pre-cut lengths?

The pre-cut lengths range from kits for 5m lengths to 50m lengths. A bulk option is available on a reel at 100m length. All kits include the relevant components for the full installation.

## What is the benefit of standing fibre optic cables off of the wall?

There are several main benefits to standing fibre optic cable off of the wall:

Avoiding damage to the fibre optic cable: the fibres within cables can be damaged if they are directly fixed to the wall which negatively effects connectivity. This can become costly to locate and replace.

To follow the best practice: using a full metal based system reduces the risk of any hazards, particularly when installing above doors and windows.

Less time working at height: as the fibre optic cable is only connected using a tie, unlike traditional methods where the cable would need to be secured directly to the wall, the time spent working at height is minimised.

## Why does the fibre optic cable need to be attached to the catenary wire?

Fibre optic cable needs to be under some form of tension to improve the flow of light (and therefore connectivity). Tensioning the cable itself risks damaging/cracking the fibres within the cable, which can lead to connectivity issues as well as being costly to replace.

To avoid damaging/cracking the fibres within the cable, the tension can be applied to the catenary wire before the fibre optic cable is attached.



# www.gripple.com

contact@gripple.com

**Gripple Ltd (Headquarters)**

The Old West Gun Works  
Savile Street East  
Sheffield S4 7UQ  
UK

**T** | +44 (0) 800 018 4264

**F** | +44 (0) 114 275 1155

**E** | info@gripple.com

**Gripple Inc**

1611 Emily Lane  
Aurora  
IL 60502  
USA

**T** | +1 866 474 7753

**F** | +1 800 654 0689

**E** | grippleinc@gripple.com

**Gripple Europe SARL**

1, rue du commerce  
BP 37  
67211 Obernai Cedex  
France

**T** | +33 (0)3 88 95 44 95

**F** | +33 (0)3 88 95 08 78

**E** | frinfo@gripple.com

**Gripple India**

C-115, Industrial Area  
Phase I, Naraina  
New Delhi-110028  
India

**T** | +91-11-45136817

**F** | +91-11-45136817

**E** | ininfo@gripple.com

**Gripple Japan K.K**

2-57 Tsukizi-cho  
Hyogo-ku, Kobe-shi  
Hyogo, 652-0845  
Japan

**T** | +81 (0) 78 681 2121

**F** | +81 (0) 78 681 2122

**E** | japan@gripple.com

**Gripple Canada Inc**

6665 Tomken Road  
Units 9-10  
Mississauga, ON L5T 2C4  
Canada

**T** | +1 905 458 8700

**E** | cainfo@gripple.com

We are social, follow our updates:



UTIL-BROC-FOS-ENG-5555

Published August 2022

Please refer to [www.gripple.com](http://www.gripple.com) for the most up to date user advice and product information.

© 2022 Gripple

Gripple is a registered trademark of Gripple Limited.

Company registered in England No. 1772901, VAT Reg No. GB 600 1951 88