

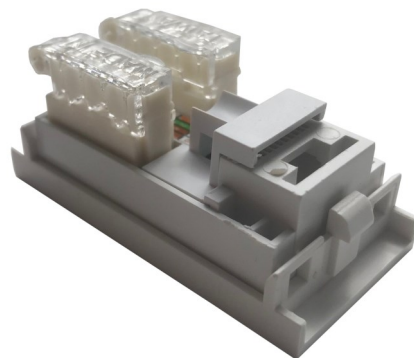
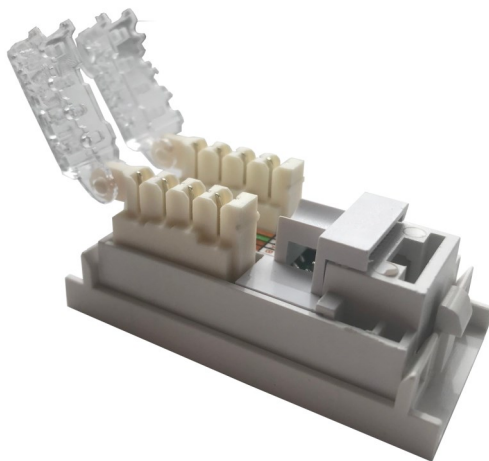
TOOLLESS Cat5e EURO MODULES

Technical information

Cat5e modules with toolless termination for mounting in Euro faceplates. Fast and easy to terminate with no specialist tools required

Features:

- ◆ Support frequencies up to 100MHz
- ◆ Cat5e compliant performance
- ◆ Integral labelling facility
- ◆ Spring loaded shutter
- ◆ Can also be terminated using Krone or 110 tool



Part Number

| Item | Description | Type | Style | Colour |
|--------|-----------------------|------------|-------|--------|
| 834230 | Toolless Cat5e Module | Unshielded | Euro | White |