

# CAT6A RJ45 PLUGS

## Technical Information

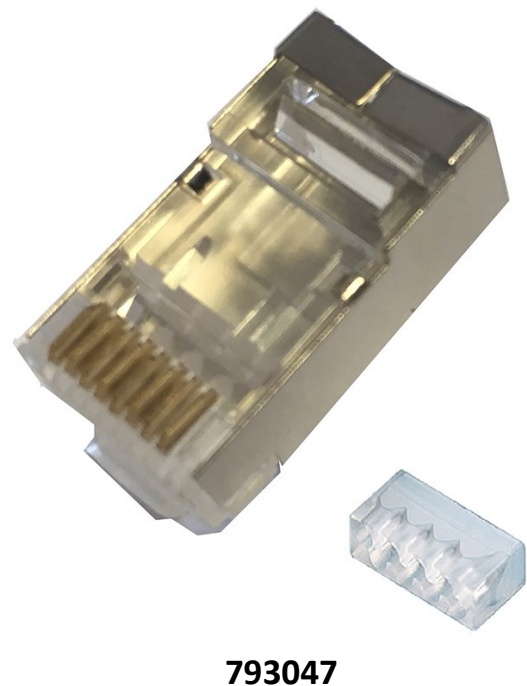


### Features:

- ◆ Shielded Cat6A 8P8C plugs
  - ◆ Suitable for stranded and solid wires
  - ◆ Two part construction
  - ◆ Also suitable for use on Cat6 shielded cables
- ◆ Use Ultima Compact Crimp Tool 822107

### Materials

Plug Body	Polycarbonate, UL94V-0
Plug Contact	Phosphor bronze, finished with 50µ gold plating on jack contact area
Screen	Brass, nickel plated
Maximum Cable Diameter	7.5mm
Suitable Wire Sizes	22 to 26AWG
Maximum Wire Insulation Diameter	828506 = 1.3mm 793047 = 1.0mm



### Part Numbers

Item	Description	Type	Pack Size	Construction	Colour
828506	Cat6A RJ45 Plug Rear Shield Clamp	Shielded	100 pcs	Two Part	Silver
793047	Cat6A RJ45 Plug	Shielded	50 pcs	Two Part	Silver