

LC-ST MULTIMODE OM3 FIBRE OPTIC DUPLEX PATCH LEADS



Technical information

Ultima patch leads are manufactured to the highest standards and supplied individually bagged with its own test certificate. The transmit and receive leg of each duplex lead is clearly marked to allow for a quick install.

Features:

- ◆ Provides moveable links between sections of permanently installed horizontal cable
- ◆ Suitable for use in computer rooms, data centres and work areas
- ◆ Low Smoke Zero Halogen Jacket
- ◆ Tight Buffered Fibre with aramid yarn
- ◆ Full test certificate provided with each lead
- ◆ High quality build and performance
- ◆ Strain relief boots to protect fibre
- ◆ Dust caps provided to keep the fibre face clean
- ◆ Marked transmit and receive legs
- ◆ RoHS compliant construction

Performance and Characteristics

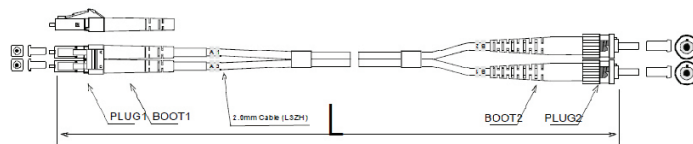
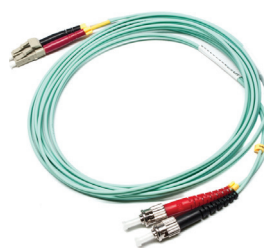
Max Attenuation (dB) 850nm	3.5
Max Attenuation (dB) 1300nm	1.5
Bandwidth OFL (MHz x km) @ 850nm	1,500
Bandwidth OFL (MHz x km) @ 1300nm	500
Insertion Loss (dB)	≤ 0.20
Return Loss (dB)	≥ 35
Temperature Range	-40°C to 75°C

Standards

LC Connector Standard	IEC 61754-20
ST Connector Standard	IEC 61754-4

Physicals

Sheath Diameter	Ø 2.0mm
Housing Colour	LC Beige, ST Silver
Boot Colour	LC Red/black, ST Red/black



Part Numbers

	Item	Description	Mode	Length	Colour
OM3 50/125µm	777562	Fibre Patch Lead LC-ST	MM	1Mtr	Aqua
	777563	Fibre Patch Lead LC-ST	MM	2Mtr	Aqua
	777564	Fibre Patch Lead LC-ST	MM	3Mtr	Aqua
	777565	Fibre Patch Lead LC-ST	MM	5Mtr	Aqua
	777566	Fibre Patch Lead LC-ST	MM	10Mtr	Aqua
	782308	Fibre Patch Lead LC-ST	MM	15Mtr	Aqua
	782309	Fibre Patch Lead LC-ST	MM	20Mtr	Aqua