

LC-SC MULTIMODE OM3 FIBRE OPTIC DUPLEX PATCH LEADS



Technical information

Ultima patch leads are manufactured to the highest standards and supplied individually bagged with its own test certificate. The transmit and receive leg of each duplex lead is clearly marked to allow for a quick install.

Features:

- ◆ Provides moveable links between sections of permanently installed horizontal cable
- ◆ Suitable for use in computer rooms, data centres and work areas
- ◆ Low Smoke Zero Halogen Jacket
- ◆ Tight Buffered Fibre with aramid yarn
- ◆ Full test certificate provided with each lead
- ◆ High quality build and performance
- ◆ Strain relief boots to protect fibre
- ◆ Dust caps provided to keep the fibre face clean
- ◆ Marked transmit and receive legs
- ◆ RoHS compliant construction

Performance and Characteristics

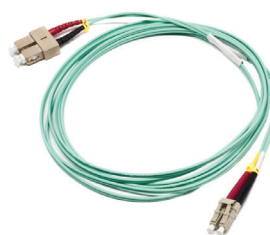
| | |
|-----------------------------------|---------------|
| Max Attenuation (dB) 850nm | 3.5 |
| Max Attenuation (dB) 1300nm | 1.5 |
| Bandwidth OFL (MHz x km) @ 850nm | 1,500 |
| Bandwidth OFL (MHz x km) @ 1300nm | 500 |
| Insertion Loss (dB) | ≤ 0.20 |
| Return Loss (dB) | ≥ 35 |
| Temperature Range | -40°C to 75°C |

Standards

| | |
|-----------------------|--------------|
| LC Connector Standard | IEC 61754-20 |
| SC Connector Standard | IEC 61754-4 |

Physicals

| | |
|-----------------|----------------------------|
| Sheath Diameter | Ø 2.0mm |
| Housing Colour | LC Beige, SC Beige |
| Boot Colour | LC Black/red, SC Black/red |



Part Numbers

| | Item | Description | Mode | Length | Colour |
|--------------|--------|------------------------|------|--------|--------|
| OM3 50/125µm | 777084 | Fibre Patch Lead LC-SC | MM | 1Mtr | Aqua |
| | 777085 | Fibre Patch Lead LC-SC | MM | 2Mtr | Aqua |
| | 777086 | Fibre Patch Lead LC-SC | MM | 3Mtr | Aqua |
| | 777087 | Fibre Patch Lead LC-SC | MM | 5Mtr | Aqua |
| | 777088 | Fibre Patch Lead LC-SC | MM | 10Mtr | Aqua |
| | 782297 | Fibre Patch Lead LC-SC | MM | 15Mtr | Aqua |
| | 782298 | Fibre Patch Lead LC-SC | MM | 20Mtr | Aqua |