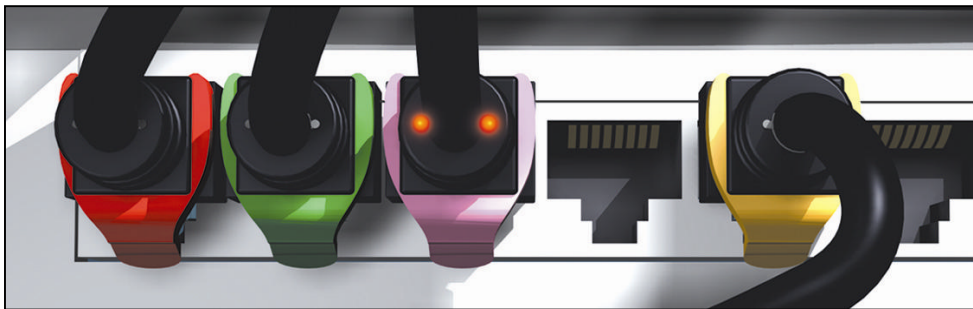


PCI6Patch

Cat 6A UTP RJ45 patch cords

Technical Data Sheet

Patent Pending



Cat 6 RJ 45 Patch Cords :

PatchSee RJ 45 Patch Cords are designed, and individual tested for connecting the network equipment to patch panel and network user outlet. They are warranted for cat 6A TIA/EIA-568-B-2.10 Channel test on a Permanent Link certified for transmission frequencies of up to 500 MHz and compatible with the 10 Gigabits applications. And Standard compliance with ISO/IEC 11801 ed2-Amd1 & Amd2

PatchSee Concept and main characteristics

- Light identification by plastic optical fiber,
- PCI (Patchsee Connector Insert : Owner PatchSee)
 - o designed to improve NEXT and RL for 10 Giga Bits applications,
 - o designed for high density panels and active components (same size as the plug in width and height)
- Warranty 25 years for Channel Cat 6A link on Cat 6A Permanent Link certified and ready for 10 GigaBits applications,
- Individual tested: each Patch Cord is individual tested (Return Loss, Attenuation, NEXT, etc...) and all the reports tests are archiving on computer database.
- Many lengths 2 feet (0.6 m) up to 16 feet (4.9 m)for patch panel and terminal link,
- Color cable: Black with white marking,
- Color boot: Grey with white marking,
- Movable color clip, 16 colors available,
- Packaging: boxes of 6 or 12 pieces, depending of the length,
- Available in cross patch cord,
- Marking on the boot: length and P/N,

- Unique serial number marking on the cable,

Technical Data Sheet

Construction

Number of pairs	4
Type	U-UTP with plastic cross web
Conductor	Stranded bare copper wire, 4 / 0.2 mm x 4 pairs
Gage	24 AWG
Insulation	Foam Skin Polyethylene
Individual pair screen	n a
Pair screen	n a
Optical wave guide	2 POF 0.5 mm
Drain	n a
Jacket	PVC Black with white printing
Overall diameter	6.0 +/- 0.2 mm
Plug housing	UL 1863 Polycarbonate individual wire guide and management bar
Contacts	Moved contacts
Contact Plating	50 μ inches gold minimum (1.2 μ m)
Shielding	n a

Mechanical Properties of the Cable

Fire Propagation Test	Temperature range During operation	Fire load	Bending radius
UL 444 VW 1 Flame test	-20°C up to +75°C	372 MJ/km	>25 mm without load

Electrical Properties of the Cable (at 20°C +/- 5°C)

Conductor resistance	Insulation resistance	Pair to ground unbalance capacitance	Impedance 1-100MHz	Impedance 100-250MHz	Propagation delay (1-250 mHz)	Test voltage in air
< 94? /km	> 150 M? /km	Nom. 3.3nF/km	100 +/- 15 ?	100 +/- 15 ?	< 45 ns/100m	2000 V

Ordering Information

Part Number Description

PCI6-U/2	Patch Cord RJ45 CAT 6A U-UTP - 0,6m
PCI6-U/3	Patch Cord RJ45 CAT 6A U-UTP - 0,9m
PCI6-U/4	Patch Cord RJ45 CAT 6A U-UTP - 1,2m
PCI6-U/5	Patch Cord RJ45 CAT 6A U-UTP - 1,5m
PCI6-U/6	Patch Cord RJ45 CAT 6A U-UTP - 1,8m
PCI6-U/7	Patch Cord RJ45 CAT 6A U-UTP - 2,1m
PCI6-U/8	Patch Cord RJ45 CAT 6A U-UTP - 2,4m
PCI6-U/9	Patch Cord RJ45 CAT 6A U-UTP - 2,7m
PCI6-U/10	Patch Cord RJ45 CAT 6A U-UTP - 3,1m
PCI6-U/13	Patch Cord RJ45 CAT 6A U-UTP - 4,0m
PCI6-U/16	Patch Cord RJ45 CAT 6A U-UTP - 4,9m