



Designed for Professionals

#workingsmarter

Catalogue 2012



listens. innovates. delivers.

SUPER ROD

new design
new products
take a look



Time is money



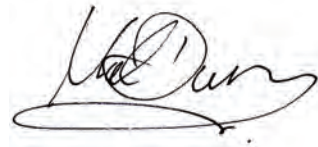
“Time is money”, according to Benjamin Franklin. This has been the drive behind our innovations since day one. Recently, Super Rod was awarded ‘The Queen’s Award for Innovation’ in the UK for saving over 9 MILLION hours in one year in the UK alone. Now that’s a lot of money in any currency!

A big part in all of our developments has been our relationship with you our customers. Our aim has always been to listen to your frustrations and then come up with solutions to help in your every day work.

Originally, our focus was on the Electrical Contractor, but we have always had the mantra “follow the cable” and that has now led us into areas such as Data, Telecommunications, Audio Visual and Security to name but a few. Each of those new areas represents new challenges for us and hopefully deliver new ideas that will benefit us all.

It gives me great pleasure to announce that we have recently been awarded another Queen’s award for Enterprise, this time for International Trade.

So thank you from all the team at Super Rod, as we look forward to working with you in the future.





Listens.

My father always told me I had two ears and one mouth for a reason.

The strength of the Super Rod range comes from the combination of your ideas and our experience. This is why we launched our Innovation eCademy to encourage and support ideas from the trade.



Innovates.

Whilst we channel a lot of our efforts into driving innovation through our products, we do not aim to stop there.

Every aspect of our business is approached with this attitude. We have a world class team of people all focused on improving the business for the benefit of both Super Rod and our customers.



Delivers.

All of the above can be a series of empty words without the commitment to deliver.

In the world of Super Rod, we aim to keep this simple by sticking to a few simple rules. Namely, "We do what we say we are going to do, when we say we are going to do it". Not complicated, but it works.



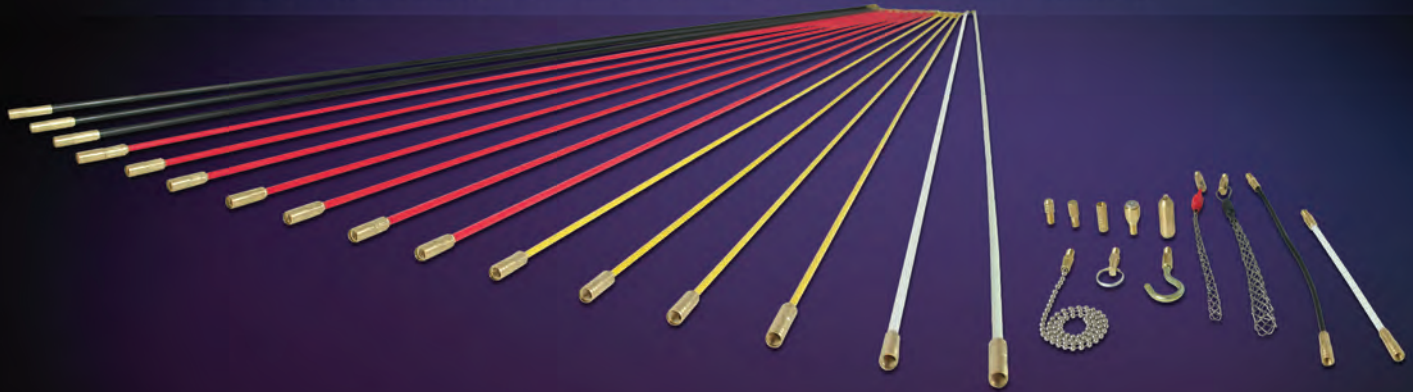
A brand you can trust.

Trust is key in whatever you do and in business, this is no exception.

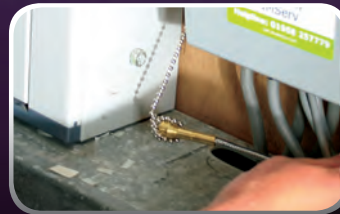
Super Rod's most important award to date, has to be when members of the main trade body in the UK, voted our range 'The Best Product of the Last 50 Years'. This meant so much to us because the people that voted for us were our customers, who use our products on a daily basis. As you can see, I am the owner of this amazing business and I aim to be totally accessible to all our customers. So please feel free to contact me any time; I would love to hear from you.

MEGA SET

The most comprehensive cable routing kit on the market



“...the Mega Set is the most valuable piece of equipment I take on-site with me...”



Mega Set (CRMX)

With over 16m (52ft) of length, the Mega Set gives you 5 different flexibility choices, making this our most popular kit. This, combined with our extensive range of attachments, is the 'must have' kit for anyone working with wire and cable.

Contents

- 6 x 5mm Red Adoxim 1m Rods • 3 x 4mm Yellow Adoxim 1m Rods • 3 x 6mm Black Adoxim 1m Rods • 5mm Nylon 1m Rod • 5mm Glo Adoxim Swivel 1m Rod • 5mm Red Adoxim Swivel 1m Rod • 4mm Yellow Adoxim Swivel 1m Rod • Flexi Lead • Shape It Flexi Lead • Chain • Super Magnet • Super Beam • Mini Eye & Ring • Gender Changer • Domed Bullet • Flat Bullet • Tuff Hook • 2 x Super Grips (6–10mm & 11–15mm)

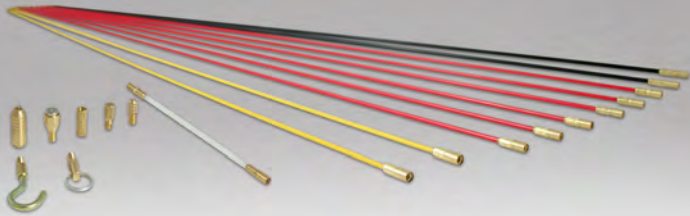
Mega Set Bits Tube (CRMX-BT)

Contents

- Chain • Super Magnet • Super Beam • Mini Eye & Ring • Gender Changer • Domed Bullet • Flat Bullet • Tuff Hook

“...invaluable at routing cables through inaccessible floor and ceiling voids.”

for the latest
demo videos
go online



Deluxe Set (CRSD)

With 10m (32ft) of length, the Deluxe Set gives you 4 different flexibility choices. This slimmed down version of the Mega Set still offers an excellent range of functionality.

“I have used this kit nearly every day for over a year. I purchased the Super Grips after the first month, but should have gone for the Mega Set from the outset!”

Contents

- 6 x 5mm Red Adoxim 1m Rods
- 2 x 4mm Yellow Adoxim 1m Rods
- 2 x 6mm Black Adoxim 1m Rods
- Flexi Lead
- Super Magnet
- Super Beam
- Mini Eye & Ring
- Gender Changer
- Tuff Hook
- Domed Bullet
- Flat Bullet

- 10m (32ft) of rod length
- 4 flexibilities of rod
- 8 cable handling attachments



Deluxe Set Bits Tube (CRSD-BT)

Contents

- Super Magnet • Super Beam • Mini Eye & Ring • Gender Changer • Domed Bullet • Flat Bullet • Tuff Hook

Super Six Set (CRS6)

The Super Six is the intermediate set in the Cable Rod System.

Offering 4 variants of flexibility, over 6 metres of rods, plus a range of attachments that enable the installer to push, pull and retrieve cables in many situations.



Contents

- 3 x 5mm Red Adoxim 1m Rods
- 2 x 4mm Yellow Adoxim 1m Rods
- 6mm Black Adoxim 1m Rod
- Flexi Lead
- Super Magnet
- Mini Eye & Ring
- Gender Changer
- Tuff Hook
- Domed Bullet
- Flat Bullet

- 6m (19ft) of rod length
- 4 flexibilities of rod
- 7 cable handling attachments

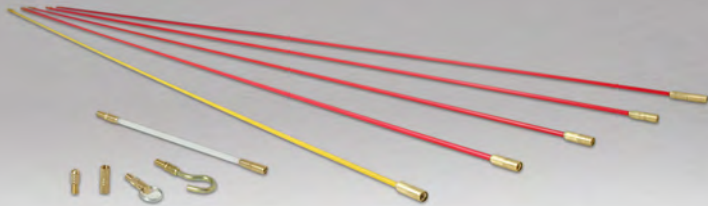


Super Six Set Bits Tube (CRS6-BT)

Contents

- Mini Eye & Ring • Gender Changer • Super Magnet • Domed Bullet • Flat Bullet • Tuff Hook

“...they save you hours of hard work, therefore saving you money.”



Standard Set (CRSS)

With 5m (16ft) of length, the Standard Set gives you 3 different flexibility choices. An ideal starter set.

“This was the first kit I bought when I qualified. I still have it now, but upgraded to the Mega Set as soon as I could. Amazing range, well thought out and well made”.

Contents

- 4 x 5mm Red Adoxim 1m Rods
- 1 x 4mm Yellow Adoxim 1m Rod
- Tuff Hook
- Gender Changer
- Domed Bullet
- Mini Eye
- Flexi Lead
- Tough Carry Tube

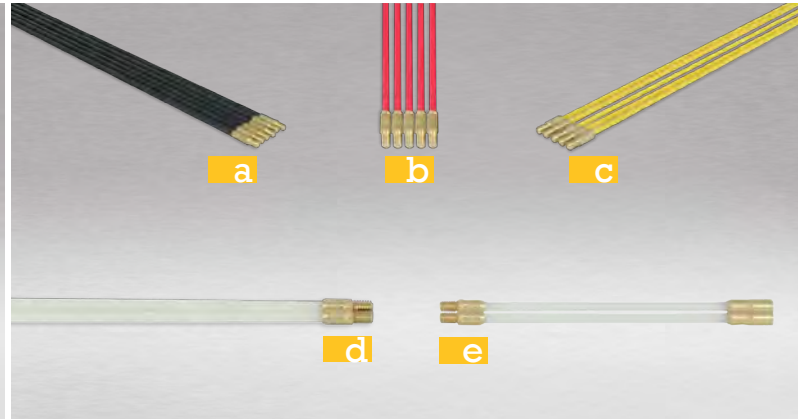
- 5m (16ft) of rod length
- 3 flexibilities of rod
- 4 cable handling attachments



Standard Set Bits Tube (CRSS-BT)

Contents

- Mini Eye & Ring
- Gender Changer
- Domed Bullet
- Tuff Hook



a Black Rod Spares (CR-BX5)
5 x 6mm Black Adoxim 1m Rods

b Red Rod Spares (CR-RX5)
5 x 5mm Red Adoxim 1m Rods

c Yellow Rod Spares (CR-YX5)
5 x 4mm Yellow Adoxim 1m Rods

d Nylon Rod Spares 1m (CR-NX2)
2 x 1m Nylon Rods

e Nylon Rod Spares 175mm (CR-SNX2)
2 x 175mm Nylon Rods

Handy Set shown



Contents

- 2 x 5mm Red Adoxim 0.5m Rods
- 1 x 4mm Yellow Adoxim 0.5m Rod
- 1 x 6mm Black Adoxim 0.5m Rod
- 1 x 5mm Nylon 330mm Rod
- Tuff Hook
- Domed Bullet
- Mini Eye
- Tough Carry Tube

Handy Set (CRHS)

This miniature set of rods, only 500mm in length, offers the ideal solution when working in a confined area.

They share the same thread size as the 1m rods and are compatible with any Super Rod attachment. They easily fit into your tool box as well!

- **Ideal set when space is restricted**
- **Easily fits in your toolbox**

Toolbox Set (CRTB)

Same as Handy Set but with **330mm length rods** for great flexibility in cramped areas.

Polymer Set 8 (SRPR8) shown



Polymer Set (SRPRS)

This non-conductive, shortened set of rods is ideal when working in confined spaces. Whilst it is compatible with the standard range of Super Rod attachments, it has its own range of polymer 'Glo in the Dark' attachments.

An excellent choice when working in electrically sensitive areas such as server rooms.

- **3 different configurations of kit**
- **Ideal when working with sensitive materials and components**
- **All attachments are 'Glo in the Dark'**
- **Easily fits in your toolbox**

Polymer Set 4 (SRPRS4)

Polymer set with 4 rods and 5 attachments.

Polymer Set 8 (SRPRS8)

Polymer set with 8 rods and 5 attachments.

Polymer Set 12 (SRPRS12)

Polymer set with 12 rods and 5 attachments.

innovative
attachments
you'll love

Problem solving made easy



Inspection Mirror Kit (SRMK)

The simplest of ideas! Reality showed us that most contractors have some form of mirror in their kits. A ladies compact mirror seemed to be a favourite choice! To avoid any further embarrassment, we have developed a version that will attach to your rods.

- 50mm Round Mirror
- 50mm Tall Rectangular Mirror
- 200mm of Steel Flexi Material



Super Flexi Magnet (SFD)

Seriously strong retrieval of any metal object. Combine this with its flexibility for outstanding functionality.

The combination with our Super Magnet (which will pick up 2.5kg) makes this a great retrieval tool.

- **The powerful magnet, enables the retrieval of wire, chains and tools**

Gooseneck Kit (SRG3)

Enjoy even more flexibility with our selection of different length goosenecks.

- **2 x 230mm gooseneck**
- **1 x 370mm gooseneck**



Super Flexi Beam (SRFSB)

When illumination is required in an awkward situation, you'll find this attachment a real time saver.

The LED torch is ideal for illuminating and inspecting difficult to view areas when installing cables e.g. cavity walls

Replacement Batteries (CRRB)

For when your existing batteries run out.



Flexi Combi Kit (SRFCK)

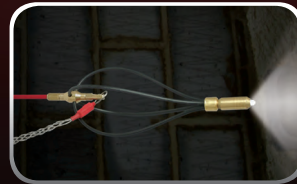
The ultimate inspection & retrieval attachment kit.

Introducing the Super Flexi Beam and Super Magnet in one 'must have' flexible kit.

Never go into the dark alone again...

...be prepared.

Combine the versatile Super Beam, Glider and Super Grip to make your life easier.



Scan me
for more
info



Glider (SRGLIDE)

The Glider allows your rods to navigate even the most hostile terrain without digging into loft insulation or getting caught on joists and debris etc.

The Super Grips and Super Beam can be attached to the Glider, further increasing the functionality of the product even more!

- **Compatible with other attachments**

Glider X2 (SRGLIDEX2)

The X2 Glider has been designed to traverse the more uneven surfaces such as roof tiles.

- **Ideal when guiding over uneven surfaces**
- **Great for aerial installations**



0-20ft in 10 seconds!

When speed counts look no further



Telescopic Pole (SRTP)

Back to the "Time is money" quote, our Telescopic Pole really delivers. It can extend to 5.6 metres in seconds. The pole comes complete with a versatile platform which allows up to three Super Rod attachments to be used at any one time. This product is ideal for working at height, across loft spaces and under floors.



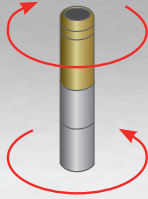
R2 Testing Lead (SRR2)

The Telescopic Pole can be used in conjunction with the R2 testing lead, enabling users to make contact with exposed conductive parts on any electrical equipment or accessory.

For example; fluorescent luminaires, fans and AC units etc, eliminating the need to use ladders, towers or scissor lifts.



“Super Grips are so much more reliable than insulation tape...”



Clockwise and anti-clockwise rotation



FREE In-line Swivel with all multi-packs



In-line Swivel (CRSW)

The In-line Swivel can be easily added to the end of your Cable Rods, to accept any twists or turns in the cable during installation.

This is especially important when working with data cable, as twists can damage the cable's performance.

The In-line Swivel can also be used to join two Super Grips together; this is useful when replacing old cable with new.

- Swivels for awkward installations
- Easily replace old cable with new
- FREE with every Super Grip multi-pack

Super Grips

The most secure way to attach your cable to your rods. Available in 5 sizes and capable of pulling either single or multiple cables.

The days of tying cable to rods with tape should be over. Super Grips are quicker, cleaner and more secure.

- Available in 5 sizes
- Manufactured from Stainless Steel
- Quicker and cleaner than tape

Single Pack

Pulling Sock (4-6mm)	CRSK 04-06	○
Pulling Sock (6-10mm)	CRSK 06-10	●
Pulling Sock (11-15mm)	CRSK 11-15	●
Pulling Sock (16-22mm)	CRSK 16-22	●
Pulling Sock (23-30mm)	CRSK 23-30	●

Multi Pack

Pulling Sock 3 Pk (4-15mm)	CRSK 04-15	○●●
Pulling Sock 2 Pk (6-15mm)	CRSK 06-15	●●
Pulling Sock 2 Pk (16-30mm)	CRSK 16-30	●●
Pulling Sock 5 Pk (4-30mm)	CRSK 04-30	○●●●●

A FREE In-line Swivel with every Super Grip multi pack purchased.

Quick, portable & effective cable spooling



The Cable Jack (SRJK)

The Cable Jack is an innovative cable spooling device. It uses your existing 44mm Cable Rod packaging tube, along with metal collars and legs, to form an 'A' frame. You can use this frame as a lightweight spooler for small jobs. It can also hold up to 35kg of weight! You're taking the Cable Rod tube with you, so why not add in this extra functionality?

- 2 x Aluminium Collars
- 4 x 335mm Fibre Glass Legs

Clever screw-in legs that secure the collars to the tube/spool



Tri Hook (SRTR)

Designed by an electrician to offer three times the chance of hooking a cable from a wall space.

The Tri Hook is a brilliant solution to an everyday problem.

- **Increase your chances of hooking your cable at the first attempt**



Chain & Magnet (CRCM)

A simple but effective method for routing cable.

Simply screw the chain onto the end of your rod and place into the void you wish to route through. Next, take the Super Magnet and screw it onto the other rod. Finally, using your final access point (ie plug socket, floor board etc) fish inside the void until the magnet comes into contact with the chain and draw the rod through.

- **Route cable with ease with this efficient attachment combination**
- **Let the accessories work for you**



Magcom Tracer (CRMC)

Locate through obstructions such as walls and flooring.

The Magcom Tracer allows you to locate the rod end when concealed inside walls, conduit, flooring etc. This is particularly useful when locating obstructions.

Screw the Super Magnet onto a rod and feed it roughly into position.

Then sweep the area with the compass and the needle will reverse when it passes the magnet.

- **Sensitive to approximately 60mm depending on the material**



Super Beam (CRSB)

Illuminate any dark space with this highly useful torch attachment.

The Super Beam is a self contained LED torch that can fix onto any of your Cable Rods. This brilliant little attachment turns your Cable Rod set into an instant inspection tool! It can also be used to locate the end of the rods within voids.

- **Working in the dark is no longer an issue with the Super Beam attachment**
- **Spare batteries are available (order code: CRRB) see page 8 for more details**



The Claw (SRCLAW)

Use two attachments at once to route and retrieve.

The Claw is a double-headed attachment to enable the use of two attachments instead of one. For example, you could use a Super Beam with a Tuff Hook to retrieve cable in dark voids. This innovative attachment comes complete with a male Gender Changer to allow connection with female-threaded attachments (such as the Super Beam).

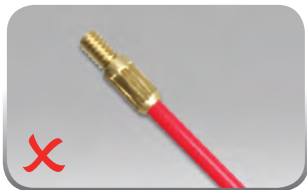
- **Double your chances of routing and retrieving**

SUPER ROD Top 3 Tips

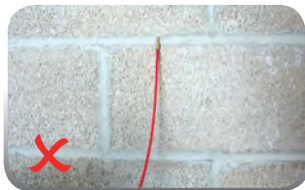
got your
own top tips?
get in touch



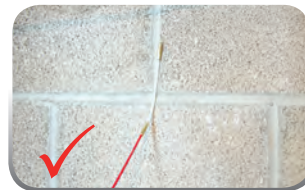
1. **Route cable around tight corners** (Requires Flexi Lead, 5mm Rod and Domed Bullet)



The unprotected connector can get either stuck or damaged when passing across a wall.



Adding both the short flexi-lead and the domed bullet prevents any snagging or damage.



2. **Ensure your Super Rods' long life** (Requires any Super Rod and Flat Bullet)



An open ended connector can get filled with dust and debris, preventing the full connection.



Should this occur, the Flat Bullet will clean and protect the connector for future use.



3. **Replace new for old cables simultaneously** (Requires 2 Pulling Socks, In-line Swivel and rod)



The joining of old cable to new is common practice, but not always effective.

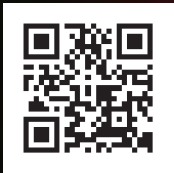


Joining two Super Grips together with our swivel attachment gives a secure solution.

SUPER CARRY CASE

Arrive knowing you have everything to get the job done

Scan me
for more info



Carry Case (SRBAG)

The Super Rod case is the perfect holding device to house your Super Rod products. The case can hold several tubes of rods as well as various accessories via the handy pouches located along the side of the case itself.

Why try and manually transport a handful of tubes on site with you, when you can arrive much more efficiently by carrying everything you need in one handy Super Rod case?



Contents shown for illustration
purposes only and are not included



Why choose coiled products?

One of the most common questions we get asked is, "Which do I need, a coiled product or a rod-based product?" The answer is simple, both.

Not always of course, but the combination of both in your armoury means you are equipped for whatever

challenge you face. Basically, rod-based products tend to perform better in more open areas (ceilings, wall cavities etc) and coiled products tend to perform better in a contained environment such as conduit or ducting.



Cable Rat (RAT20/RAT30)

The quick solution to a lengthy problem – draw cables through all manner of curves and bends! Quality fish tape for the professional installer. Constructed of the finest quality GRP coated in a smooth polypropylene. Light, portable and extremely strong.

- GRP core / Polypropylene coating
- Available in 20m or 30m lengths



Flat Rat (FRT10)

10 metre rectangular GRP Flat Rat in a handy plastic dispenser. Complete with Flexi Lead, Domed Bullet and Mini Eye.

Maintains strength when being pushed, but flexible enough to go around tight conduit bends. The rectangular design keeps the Flat Rat moving forwards – avoiding the problem of coiling.

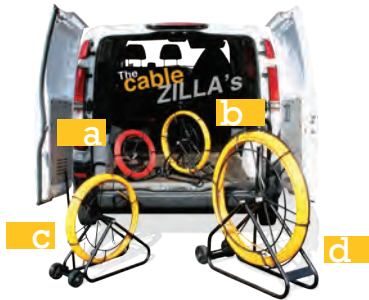
- GRP core / Polypropylene coating
- Rectangular material to ensure bending on only one plane



Cable Rat Plus (RATGPLUS20/RATGPLUS30)

All the advantages of our traditional Cable Rat, but with improved housing and dispensing mechanism. Made from a specialised material with a low surface friction, for less resistance when pulling through heavily populated conduit.

- Specialised material for easy handling and low surface friction
- Available in 20m or 30m lengths



Products relative in size to a van shown in illustration

Cable Zilla

This is where things get serious. Size matters as they say and this is extremely important when looking at this range of tools.

We have matched the requirements for strength and flexibility to deliver a real monster of a tool that is fit for any challenge, with options from 50m up to 150m and beyond!

- Incredibly strong frame designed for the challenges of site life
- Various diameters of rod available to suit all requirements
- Custom units can be manufactured to match any individual needs



a

Cable Zilla (50m)
(CZLA 50X6-S)

- 50m length / 6mm diameter
- 450mm wide frame
- Guide Wheel attachment
- Flexi Lead attachment
- Mini Eye attachment



b

Cable Zilla (50m)
(CZLA 50X6)

- 50m length / 6mm diameter
- 550mm tall frame
- Guide Wheel attachment
- Flexi Lead attachment
- Mini Eye attachment



c

Cable Zilla (50m)
(CZLA 50X9)

- 50m length / 9mm diameter
- 700mm tall frame
- Guide Wheel attachment
- Flexi Lead attachment
- Mini Eye attachment



d

Cable Zilla (100m)
(CZLA 100X9)

- 100m length / 9mm diameter
- 1000mm tall frame • Attachments

Cable Zilla (150m) (CZLA 150X9)

- 150m length / 9mm diameter

Cable Zilla (150m) (CZLA 150X11)

- 150m length / 11mm diameter



Inspect & Record

On a daily basis, we are faced with that step into the unknown when we try to route our cable.

At Super Rod we have always looked to reduce that uncertainty, initially with a wireless camera, and now with a series of "borascope" style cameras. Each allows you to inspect and record across a wide range of distances from a few metres up to 120m.



IP67
Protection

*1m extensions available (SRCAMV6-1M), however, no more than 4 extensions are recommended

Super Cam V6 (SRCAMV6)

The Super Cam V6 features a 9mm endoscope camera which is perfect for close up work when inspecting cable runs, under floors, wall cavities and confined spaces. The V6 monitor has a recording function which allows you to document inspections, discuss tasks with clients etc. Footage can be played back through the monitor through AV connections or sent to a computer via USB.



IP68
Protection

Super Cam V7 (SRCAMV7)

The Super Cam V7 takes cutting edge inspection technology to the next level. The V7 features a high-quality camera and record function which can be used over long distances thanks to the coiled design. Featuring a sprung camera head with integral light source, the Super Cam V7 provides outstanding resolution and image clarity.

check them
out in action...
go online now



IP68
Protection

Super Cam V8 (SRCAMV8)

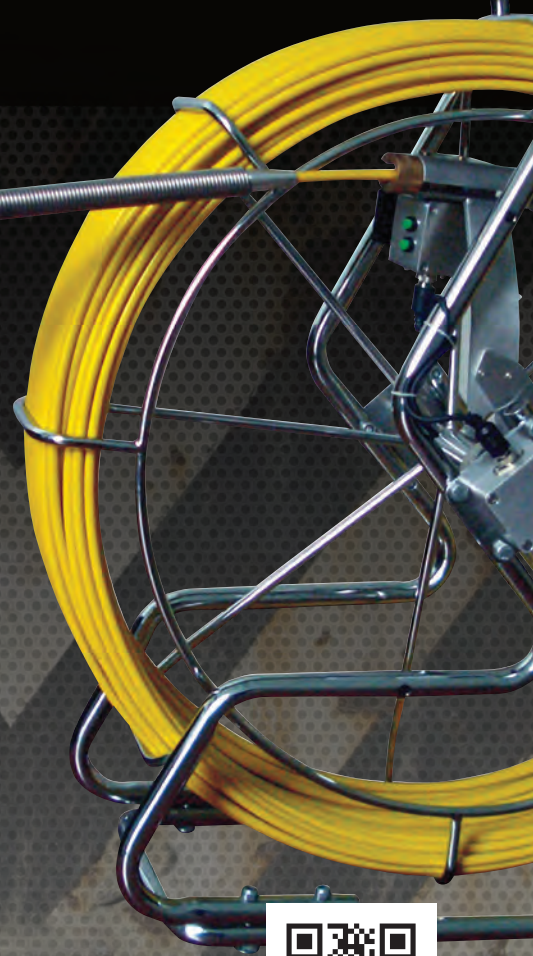
If you require inspection technology over vast distances, you need the amazing Super Cam V8. The V8 features a high-quality camera and record function which can be used over long distances, due to the long, coiled cable design. Featuring a sprung camera head with integrated glider and LED lights for ease of use. It's the perfect answer to long distance investigation.



Super Cam V6 giving you a clear picture of what's around the corner

Specification

	V6	V7	V8
Endoscopic camera	•	•	•
7" colour TFT monitor		•	•
3.5" colour TFT monitor	•		
Record to SD micro card	•	•	•
Night Vision	•	•	•
Weatherproof (IP rated)	•	•	•
Cable Reel (30m GRP Rod)		•	
Cable Reel (120m GRP Rod)			•
Battery case		•	•
Sunshade		•	•
Camera Head Protection		•	•
Soft Cable (short)		•	•
Remote Control		•	•
Driver Disk		•	•
DC 12V Power Supply		•	•
Ergonomic handle	•		
Carry case	•	•	•

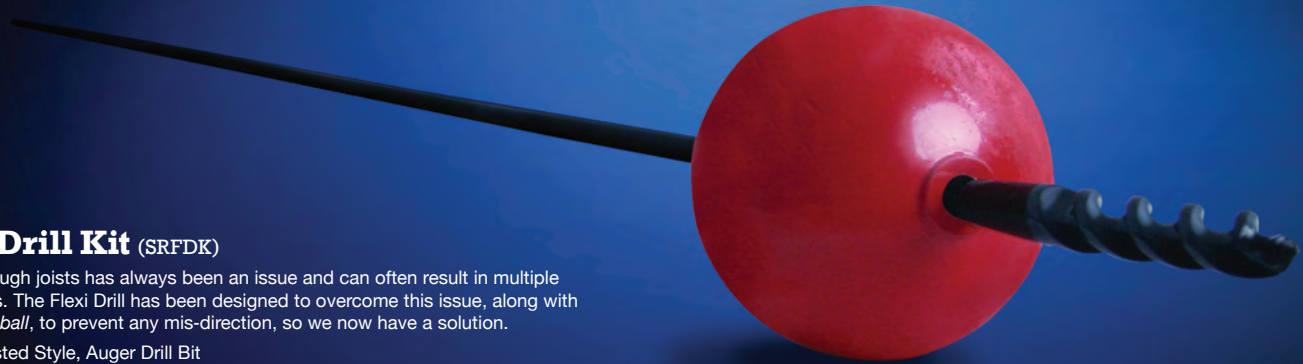


Scan me for more info

listens. innovates. delivers.

FLEXI DRILL KIT

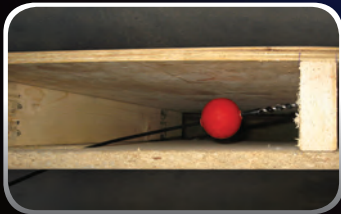
Drill through awkward obstructions on the bend



Flexi Drill Kit (SRFDK)

Drilling through joists has always been an issue and can often result in multiple entry points. The Flexi Drill has been designed to overcome this issue, along with our *big red ball*, to prevent any mis-direction, so we now have a solution.

- 1.2m Twisted Style, Auger Drill Bit
- 10mm Diameter Drill Bit
- 57mm Diameter Wooden Guide Ball



The combination of the flexible drill bit, along with our “red ball” allows you to drill through multiple joists without the danger of coming through the floor above.



Ladder Horse (MLH)

Similar to a machinist v-block, use the Ladder Horse for supporting, cutting, trimming and sawing. It works anywhere your ladder works.

Unlike a sawhorse, the Ladder Horse requires no unfolding, no assembly and no bulky storage. Save your back! Choose the ladder rung with the best height for you, stand up and cut. Cuts EMT, Rigid, PVC and even threaded rod.

- Cut pipe, conduit or plaster board safely
- Solid aluminium construction
- Marked measurements
- Works with most work ladders



Power Pull It (MWP)

The powerful new way to pull wire without breaking into a sweat!

A compact and portable cable pulling device, which utilises your cordless drill to efficiently pull cable through ducting or conduit. Dramatically reduces time.

- Saves on labour
- Sturdy construction
- No anchors required

www.super-rod.co.uk

Innovation.



Out of this World

As Super Rod expand across the globe we are building up relationships with like minded companies. One of those is Madison Electric, who like us have a product development philosophy rooted in the trade.



Both the Ladder Horse and the Power Pull-it have recently come through that process and we feel will offer significant advantages to contractors either side of the Atlantic.

CAVITY MASTER

Access, route and close in seconds



Cavity Master (CRCA1)

The Cavity Master has been borne out of years of lifting and then having to repair or replace particle or chipboard flooring to gain access to services, then having the time consuming job of repairing the floor, usually without success. By using the Cavity Master tool, floors and wall spaces are quickly opened and sealed with the closure plates provided.

- Cavity Master • Arbour and Drill • 5 x Solid Cover Plates

Solid Plates x5 (CRCAPS)

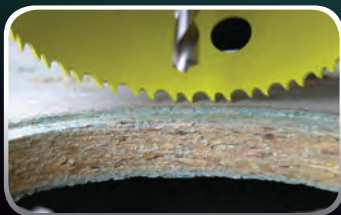
The solid plates have been designed to cover cavities in surfaces such as floor boards, by sitting in the rebate made by the Cavity Master.

Mesh Plates x5 (CRCAPM)

The mesh plates work by covering over cavities made in plaster board, as plaster can be applied over the top of the mesh material.



Cut through in seconds



Automatically create a 2mm rebate



Easy access via the hole



Flush finish, seal with a cavity plate

Leak Mate (SR-LM)

Reseal leaking pipework in seconds.

Leak Mate is a re-usable temporary seal for pipework that seals completely around the damaged pipe in seconds. Simple and easy to install, the Leak Mate allows for little disruption and no need for emergency call outs.

* NOTE Leak Mate is a temporary solution. The leak should be fixed by a qualified plumber at the nearest convenient opportunity.

- 1 x Leak Mate tool
- 3 x Re-usable seals
(Sizes 10mm, 15mm and 22mm)
- 1 x Easy to follow Instructions



3 Re-usable seals available



Grips around the pipe, creating a tight seal



#workingsm

#workingsmarter clothing

The Super Rod #workingsmarter range was initially started as a range of promotional items, but due to popular demand we have now made a clothing range that is available to buy. So if you want to show everyone you're #workingsmarter, now you can.

Simply choose the item of clothing you want and contact us with the item code, size and colour.



*NOTE Reverse design reads:
#workingsmarter (white stitching)

A) Beanie Hat
Item Code: SRBEANIE
Available Sizes: One Size Only
Standard Colours: ■



B) Outdoors Jacket 1
Item Code: SRJACKET
Available Sizes: S, M, L, XL
Standard Colours: ■



C) Outdoors Jacket 2
Item Code: SR-J-W
Available Sizes: S, M, L, XL
Standard Colours: ■

listens. innovates. delivers.

arter clothing



D) Body Warmer
Item Code: SRBWARMER
Available Sizes: S, M, L, XL
Standard Colours: ■



E) Hoodie
Item Code: SRHOODIE
Available Sizes: S, M, L, XL
Standard Colours: ■



F) Round Neck T-Shirt
Item Code: SRTSHIRT
Available Sizes: S, M, L, XL
Standard Colours: ■ ■ ■

*** NOTE Different colours are available on request**



“As both a tradesman and a product tester for several magazines, I have come to appreciate good tools. Super Rod is no exception, great design, delivering functionality for every occasion, and to top things off they are designed and manufactured in the UK.”

Roger Bisby

TV Presenter and Journalist

Known for his expertise in the British building industry. He was the expert on BBC's Watchdog and Rogue Traders.

www.selfbuilder.net



“One thing we strive for at elecchicks is a really neat and tidy installation for the client. Super Rod has been a vital piece of kit when trying to achieve this”

Chris and Leah Elecchicks

Professional, qualified electricians with a unique twist, whereby they encourage and actively employ female electricians and contractors.

www.elecchicks.com



“We bought our first Super Rod kit over four years ago. It has outlasted cheaper inferior sets that we have all tried and now all of our teams only use Super Rod kits. The time we save by using Super Rod products, pays for themselves in the first couple of days.”

Kris Hogg Konnectiv

The experts in Smart Technology for home and business.

www.konnectiv.com



“...used the Mega Set for the first time this year. WOW what a life saver! It saved at least half a day on its first time out, we never leave home without it now.”

Oliver Eames

IT Cubed Solutions Ltd.

IT Cubed Solutions specialise in design, installation and maintaining IT and Data systems across the UK, utilising their own Box Office Solutions package.

www.it-3.co.uk



visit us at
super-rod.co.uk
for our latest
innovative tools

Get in touch.

At the start of this catalogue, we explained our passion for listening to you the trade and our recognition that this is where the best ideas come from. Fortunately for us, developments in social media have made this so much easier and dynamic. So, we look forward to hearing from you via your preferred route. Alternatively, you can even pick up the phone and speak to any of our team.



For the latest news, products, contact information and promotions, visit us to see how you can save yourself time and money.

www.super-rod.co.uk



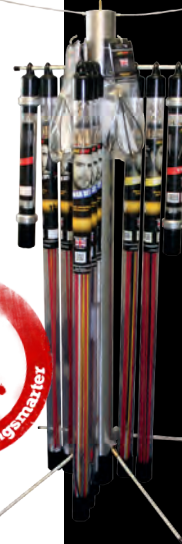
In 2001, we created Super Rodney, well before Facebook etc. Now he is back and keen to hear from you. Follow his adventures on his Facebook page. www.facebook.com/#!/pages/super-rod-ltd/36595046750



The world has gone Twitter crazy and we are no different. Follow us, chat to us and share your application pictures with us. [@SuperRod2010](https://twitter.com/SuperRod2010) [#workingsmarter](https://twitter.com/workingsmarter) [#madeinbritain](https://twitter.com/madeinbritain)



Visit our You Tube channel for time saving tips and demonstrations of the Super Rod products. www.youtube.com/user/electricaltips





THE QUEEN'S AWARDS
FOR ENTERPRISE:
INNOVATION
2008

SUPER ROD

listens. innovates. delivers.

www.super-rod.com



THE QUEEN'S AWARDS
FOR ENTERPRISE:
INTERNATIONAL TRADE
2012

