

TERMINATION INSTRUCTIONS



Patch Panels UTP Right Angle

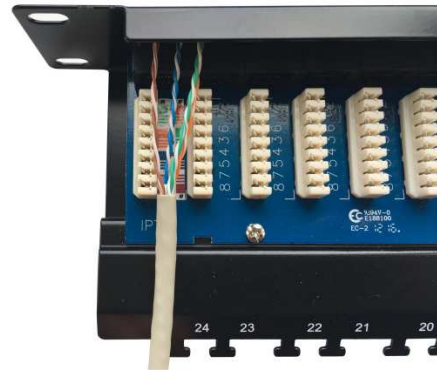
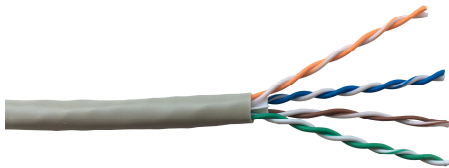


771833 (Cat 5e 24 Port)
783005 (Cat 6 24 Port)

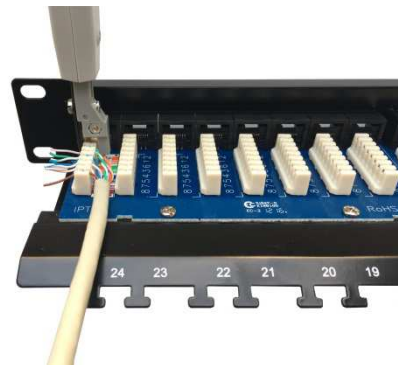


777649 (Cat 5e 48 Port)
789963 (Cat 6 48 Port)

1. Remove approximately 50mm of the cable sheath and separate the 4 pairs. For Cat 6 cables carefully cut back the central plastic separator flush with the cable sheath.
2. Place the cable so that the sheath end is close to the rear end of the IDC block.



3. Dress the wires in to the appropriate coloured IDC slots following the preferred wiring configuration. Ensure that the cable pair twists are maintained as close as possible to the point of termination.
4. Punch down the wires using a Krone type termination tool.



TERMINATION INSTRUCTIONS



Patch Panels UTP Right Angle

5. Secure the terminated cable to the cable management tray using a cable tie, taking care not to over tighten it.



Recommended Tools

Part Number	Description	Purpose
786575	Side Cutters - 145mm	Cutting cable to length & trimming cable ties
993874	Cyclops Stripper	Cutting sheath
785404	Electronic Flush Cutters	Cutting back cable central plastic separator
773118	Inserter Wire 2A	Terminating and trimming wires

