

PATCH PANELS

CABLES

MODULES

FACEPLATES, BLANKS & PATCH LEADS

Cat6 Rear Punch Patch Panel LSA+/110



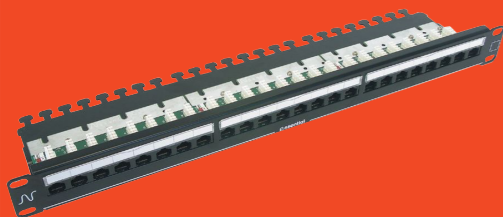
24 Port  
Part Code: 795219

Cat6 Rear Punch Patch Panel LSA+



24 Port  
Part Code: 8200021

Cat6 Right Angle Patch Panel



24 Port  
Part Code: 8200023

Cat6 U/UTP Data Cable



305Mtr  
Eca Compliant  
Part Code: 81000065

Cat6 U/UTP Data Cable



305Mtr  
Eca Compliant  
Part Code: 81000066

Cat6 PCB Euro Module



Part Code: 83000042

Cat6 PCB Euro Module Low Profile



Part Code: 83000056

Cat6 PCB LJ6C Module



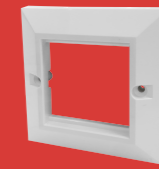
Part Code: 83000047

Flat Euro Faceplate



Part Code: 83000005

Bevelled Euro Faceplate



Part Code: 83000018

Flat Euro Faceplate



Part Code: 83000006

Bevelled Euro Faceplate



Part Code: 83000019

Blanking Plate



12.5x50

Part Code: 83000022

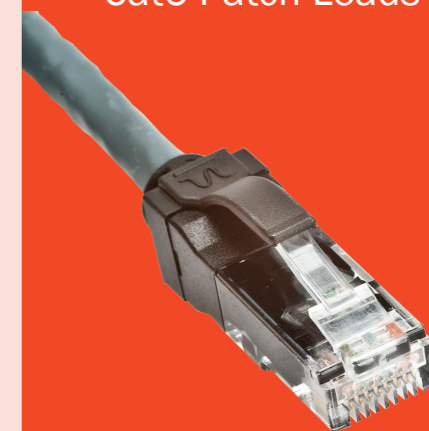
Blanking Plate



25x50

Part Code: 83000023

Cat6 Patch Leads



U/UTP Grey

0.5Mtr: 783088

1Mtr: 783037

2Mtr: 783038

3Mtr: 783039

5Mtr: 783040

To view the full range of Nexans cabling solutions please visit the Comtec website [www.comtecdirect.co.uk](http://www.comtecdirect.co.uk)