



# Product Catalogue

# Lande cabinets

Lande, established in Turkey in 2012, offers a wide range of cabinets and racks, designed for versatility, innovation, durability, and to suit the needs of a variety of applications. From freestanding racks for server and equipment rooms, through wall mounted or outdoor cabinets, to acoustic cabinets for a busy office, Lande has something to suit your requirements.

Comtec are Lande's leading distributor for cabinets and accessories in the UK and our dedicated and responsive sales team can help you to find the right product for your application. Contact your Account Manager or call us on 01480 415000 for further information.

# Contents

<b>PROline Range</b>	<b>4-9</b>
Wall-mounted Cabinets (450mm depth)	6
Wall-mounted Cabinets (600mm depth)	7
<b>PROline Range Accessories</b>	<b>8-9</b>
Fan Modules	8
Feet / Castors	8
Earth Kit	9
Rear Section Modules	9
<b>DYNAmic Range</b>	<b>10-17</b>
Freestanding Data Cabinets	12-13
Freestanding Server Cabinets	14-15
<b>DYNAmic Range Accessories</b>	<b>16-17</b>
Plinths	16
Fan Modules	16
Earth Kits	17
Cable Trays	17
<b>Safebox-B Range</b>	<b>18-23</b>
IP55 Cabinets (450mm depth)	20
IP55 Cabinets (600mm depth)	21
<b>Safebox-B Range Accessories</b>	<b>22-23</b>
Fan Modules	22
Earth Kit	22
Plinths	22
Mounting Plates	23
Pole Mounting Kit	23
<b>IP65 Range</b>	<b>24-27</b>
Industrial Freestanding Cabinets	26
<b>IP65 Range Accessories</b>	<b>27</b>
Fan Modules	27
Cabinet Heaters	27
<b>Soundproof Range</b>	<b>28-29</b>
Acoustic Freestanding Cabinets	29
<b>Set &amp; Stack Range</b>	<b>30-31</b>
Stackable Wall Bracket	31

# PROline Range

PROline Series – a high quality design for superior performance and tested with three times greater load than the nominal capacity of 100Kg on the wall. This design allows the cabinet to carry heavy telecom equipment such as UPS and batteries, as well as standard equipment such as switches, patch panels, and cables.

Each cabinet is supplied with removable glass front door, rear panel, and side panels, all of which are lockable. It will be delivered fully assembled, complete with mounting profiles (two for the 450mm deep variant, and four for the 600mm depth variant).



PROline Series has a professional aesthetic with safety glass front door and the option of RAL 9005 Black or RAL 7035 Light Grey, with fine wrinkle soft touch paint providing a professional appearance for the office environment.

The top cover and base panel features cable entry points with a rubber edged sliding mechanism to hold and fix the cables in parallel, preventing dust entry into the cabinet. The base and rear panel also feature cable gland plates. The 19" rails feature screened U-numbering to save time when installing equipment.



# PROline Range

## Wall-mounted Cabinets (450mm depth)

Tested with more than three times the nominal load of 100Kg.  
Fitted with two mounting profiles and available in two finishes.



### Technical Features

Product code	Description	Height	Width	Depth	Colour
831254	PROline Cabinet	7U	600mm	450mm	Black
831259	PROline Cabinet	7U	600mm	450mm	Grey
831255	PROline Cabinet	9U	600mm	450mm	Black
831260	PROline Cabinet	9U	600mm	450mm	Grey
831256	PROline Cabinet	12U	600mm	450mm	Black
831261	PROline Cabinet	12U	600mm	450mm	Grey
831257	PROline Cabinet	16U	600mm	450mm	Black
831262	PROline Cabinet	16U	600mm	450mm	Grey
831258	PROline Cabinet	20U	600mm	450mm	Black
831263	PROline Cabinet	20U	600mm	450mm	Grey

# PROline Range

## Wall-mounted Cabinets (600mm depth)

Tested with more than three times the nominal load of 100Kg.  
Fitted with four mounting profiles and available in two finishes.



### Technical Features

Product code	Description	Height	Width	Depth	Colour
831264	PROline Cabinet	7U	600mm	600mm	Black
831274	PROline Cabinet	7U	600mm	600mm	Grey
831265	PROline Cabinet	9U	600mm	600mm	Black
831275	PROline Cabinet	9U	600mm	600mm	Grey
831266	PROline Cabinet	12U	600mm	600mm	Black
831276	PROline Cabinet	12U	600mm	600mm	Grey
831267	PROline Cabinet	16U	600mm	600mm	Black
831278	PROline Cabinet	16U	600mm	600mm	Grey
831268	PROline Cabinet	20U	600mm	600mm	Black
831279	PROline Cabinet	20U	600mm	600mm	Grey

# PROline Range Accessories

## Fan Modules

Single and twin fan units for use with PROline wall mounted cabinets.  
Adjustable thermostats are included to assist with temperature control.



### Technical Features

Product code	Description	No of Fans	Thermostat Control
823008	PROline Fan Module	1 Way	Included
823010	PROline Fan Module	2 Way	Included

## Feet / Castors

Easy to fit castors and levelling feet for the PROline wall mounted cabinets.  
Supplied in a pack of 4. Two of the castors are braked.



### Technical Features

Product code	Description	Diameter	Quantity
823414	PVC Leveling Feet	M10	Pack of 4
823415	Castor Kit - 2 Braked	M10	Pack of 4

# PROline Range Accessories

## Earth Kit

Earth kits suitable for a range of cabinets, racks, and enclosures. Supplied with 4 leads.

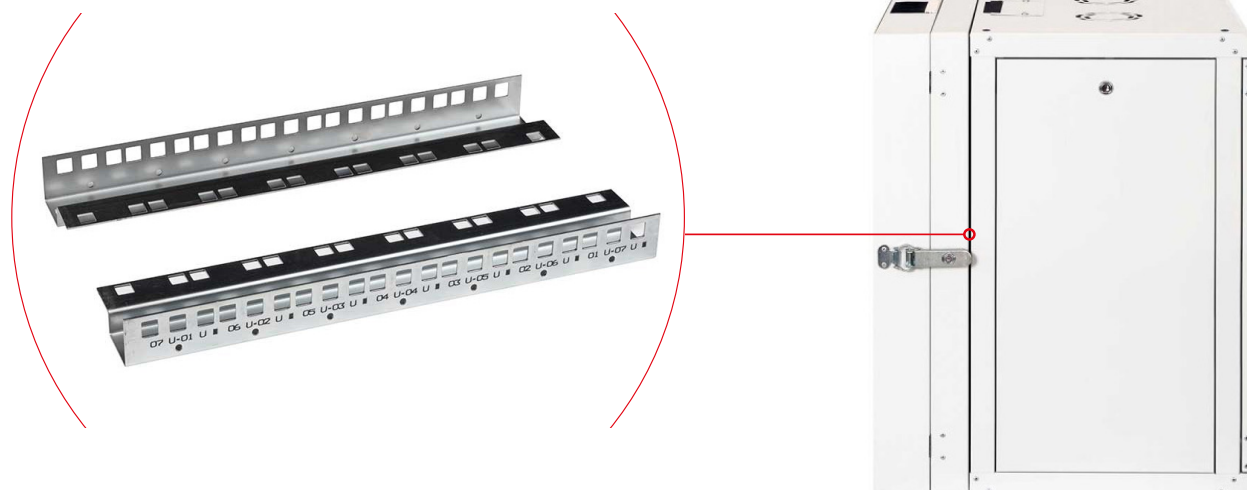


### Technical Features

Product code	Description	Leads	Diameter
831920	4 Lead Earth Kit with Fixings	4 x 400mm	2.5mm

## Rear Section Modules

Additional rails used in 450mm depth PROline cabinets to provide for mounting equipment in the rear of the cabinet.



### Technical Features

Product code	Description	Height
831280	Rear Mounting Rails for 450mm Deep Cabinets	7U
831281	Rear Mounting Rails for 450mm Deep Cabinets	9U
831282	Rear Mounting Rails for 450mm Deep Cabinets	12U
831283	Rear Mounting Rails for 450mm Deep Cabinets	16U
831284	Rear Mounting Rails for 450mm Deep Cabinets	20U

# DYNAmic Range

Dynamic Series enclosures provide a heavy-duty structure alongside a high quality design, finished with RAL 9005 Black fine wrinkle soft touch paint. The pagoda style roof adds both strength and improved ventilation. The 19" rails feature screened U-numbering to save time when installing equipment.

The Data racks feature a 4mm shatterproof glass door coupled with a robust solid rear door with barrel style lock, and lockable side panels. DYNAmic Data racks are sturdy yet versatile, with a maximum weight load of 600Kg.

The Server racks feature 70% perforated mesh on the front and rear doors, alongside a single point locking swing handle on the front door. Side horizontal support bars provide even more strength, allowing loads up to 1000Kg.



# DYNAmic Range

## Freestanding Data Cabinets

- Fitted with levelling feet as standard
- Heavy duty castors and earth bonding kit supplied as standard
- 800mm wide variants fitted with front vertical hinged cable managers



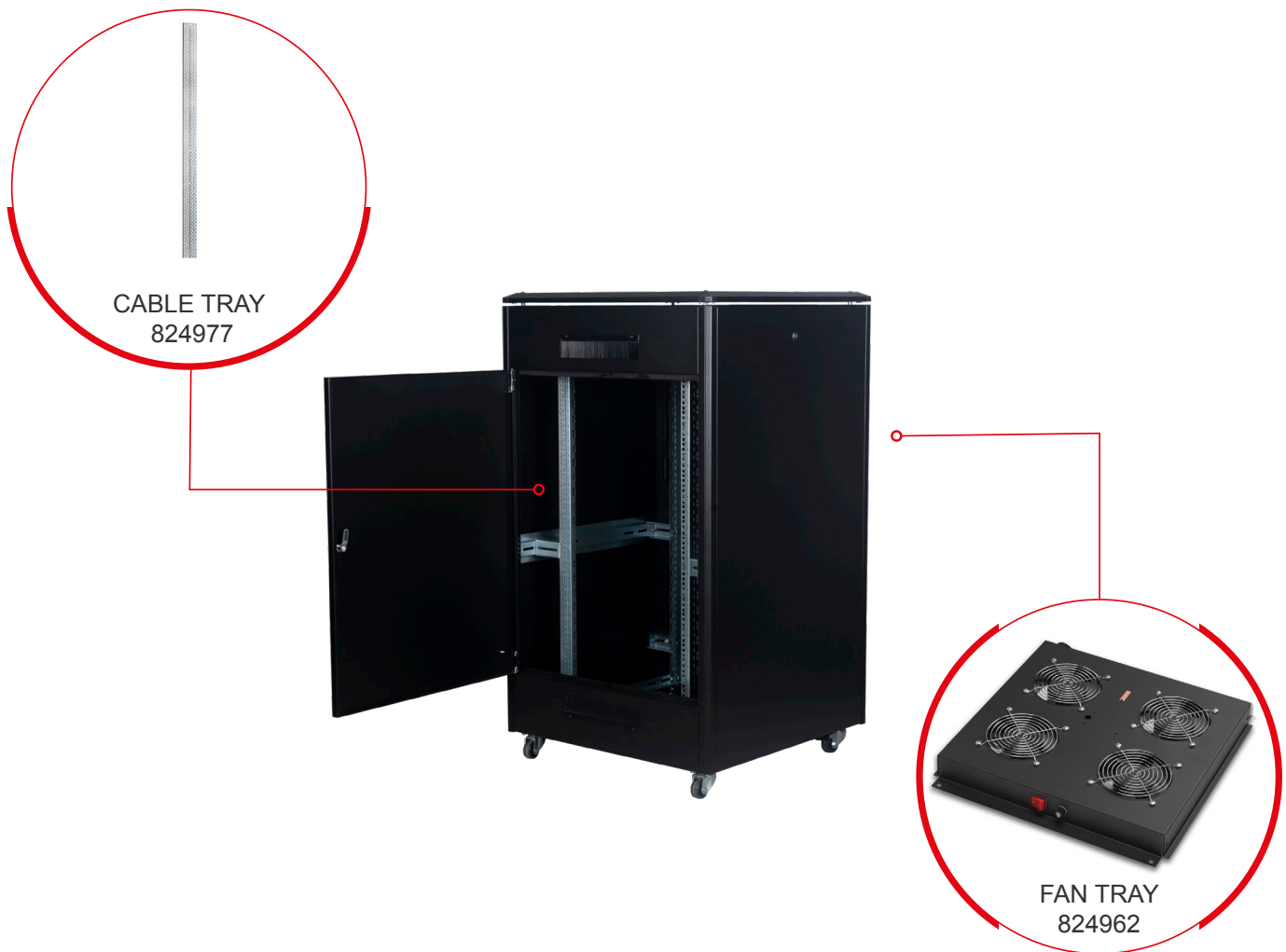
### Technical Features

Product code	Description	Height	Width	Depth	Front door	Rear door
824240	DYNAmic Data Cabinet	12U	600mm	600mm	Glass	Steel
824247	DYNAmic Data Cabinet	12U	600mm	800mm	Glass	Steel
824242	DYNAmic Data Cabinet	16U	600mm	600mm	Glass	Steel
824248	DYNAmic Data Cabinet	16U	600mm	800mm	Glass	Steel
824243	DYNAmic Data Cabinet	22U	600mm	600mm	Glass	Steel
824249	DYNAmic Data Cabinet	22U	600mm	800mm	Glass	Steel
824244	DYNAmic Data Cabinet	26U	600mm	600mm	Glass	Steel
824324	DYNAmic Data Cabinet	26U	600mm	800mm	Glass	Steel
824329	DYNAmic Data Cabinet	26U	800mm	600mm	Glass	Steel
824332	DYNAmic Data Cabinet	26U	800mm	800mm	Glass	Steel
824326	DYNAmic Data Cabinet	26U	600mm	1000mm	Glass	Steel

# DYNAmic Range

## Freestanding Data Cabinets

- Fitted with levelling feet as standard
- Heavy duty castors and earth bonding kit supplied as standard
- 800mm wide variants fitted with front vertical hinged cable managers



### Technical Features

Product code	Description	Height	Width	Depth	Front door	Rear door
824245	DYNAmic Data Cabinet	36U	600mm	600mm	Glass	Steel
824333	DYNAmic Data Cabinet	36U	800mm	800mm	Glass	Steel
824246	DYNAmic Data Cabinet	42U	600mm	600mm	Glass	Steel
824325	DYNAmic Data Cabinet	42U	600mm	800mm	Glass	Steel
824328	DYNAmic Data Cabinet	42U	600mm	1000mm	Glass	Steel
824330	DYNAmic Data Cabinet	42U	800mm	600mm	Glass	Steel
824335	DYNAmic Data Cabinet	42U	800mm	800mm	Glass	Steel
824336	DYNAmic Data Cabinet	42U	800mm	1000mm	Glass	Steel

# DYNAmic Range

## Freestanding Server Cabinets

- 600mm wide variants have single mesh front and rear doors
- 800mm wide variants have single mesh front door and double (wardrobe) vented rear door
- Fitted with levelling feet as standard
- Earth bonding kit supplied as standard
- 800mm wide variants fitted with front vertical hinged cable managers



### Technical Features

Product code	Description	Height	Width	Depth	Front door	Rear door
824341	DYNAmic Server Cabinet	26U	600mm	800mm	Mesh	Mesh
824345	DYNAmic Server Cabinet	26U	600mm	1000mm	Mesh	Mesh
824370	DYNAmic Server Cabinet	26U	800mm	800mm	Mesh	Wardrobe
824346	DYNAmic Server Cabinet	26U	800mm	1000mm	Mesh	Wardrobe
824371	DYNAmic Server Cabinet	36U	800mm	800mm	Mesh	Wardrobe

# DYNAmic Range

## Freestanding Server Cabinets

- 600mm wide variants have single mesh front and rear doors
- 800mm wide variants have single mesh front door and double (wardrobe) vented rear door
- Fitted with levelling feet as standard
- Earth bonding kit supplied as standard
- 800mm wide variants fitted with front vertical hinged cable managers



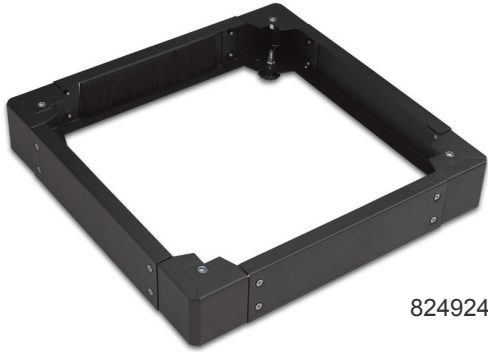
### Technical Features

Product code	Description	Height	Width	Depth	Front door	Rear door
824344	DYNAmic Server Cabinet	42U	600mm	800mm	Mesh	Mesh
824348	DYNAmic Server Cabinet	42U	600mm	1000mm	Mesh	Mesh
824375	DYNAmic Server Cabinet	42U	800mm	800mm	Mesh	Wardrobe
824376	DYNAmic Server Cabinet	42U	800mm	1000mm	Mesh	Wardrobe
825707	DYNAmic Server Cabinet	42U	800mm	800mm	Wardrobe	Wardrobe

# DYNAmic Range Accessories

## Plinths

Modular plinths for the DYNAmic Data and Server cabinets. All plinths are 100mm high with a load capacity of 1000Kg, and feature a rear brush entry panel for cabling.



824924



824929

### Technical Features

Product code	Description	Width	Depth
824924	DYNAmic Cabinet Plinth	600mm	600mm
824925	DYNAmic Cabinet Plinth	600mm	800mm
824926	DYNAmic Cabinet Plinth	600mm	1000mm
824928	DYNAmic Cabinet Plinth	800mm	600mm
824929	DYNAmic Cabinet Plinth	800mm	800mm
824930	DYNAmic Cabinet Plinth	800mm	1000mm

## Fan Modules

Long life fans with a low noise level of 42-47dB. Operating temperature of -10° to 70°C. Thermostatic controlled versions feature a 0-35°C operating switch.



### Technical Features

Product code	Description	No of Fans
824961	Roof Mounted Fan Tray	2 Way
824963	Roof Mounted Fan Tray with Thermostatic Control	2 Way
824962	Roof Mounted Fan Tray	4 Way
824964	Roof Mounted Fan Tray with Thermostatic Control	4 Way

# DYNAmic Range Accessories

## Earth Kits

Earthing kits and bars suitable for a range of cabinets, racks, and enclosures.



824935



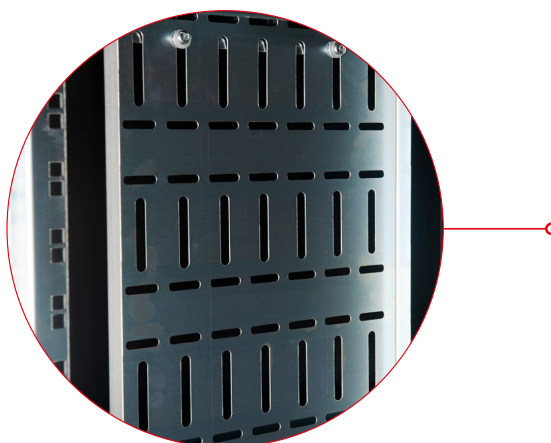
824936

### Technical Features

Product code	Description	Leads	Size
831920	4 Lead Earth Kit with Fixings	4 x 400mm	2.5mm
824935	19" Earth Bar with M6 Fixings	4 x 400mm	19"
824936	Vertical Earth Bar and Grounding Kit - for cabinets 36U and above	-	780mm

## Cable Trays

A range of cable trays for the DYNAmic Data and Server cabinets. Available in 100mm, 200mm, and 300mm variants. Supplied with brackets and fixings.



### Technical Features

Product code	Description	Height	Width
824974	Cable Tray	12U	100mm
824975	Cable Tray	16U	100mm
824989	Cable Tray	16U	200mm
824976	Cable Tray	22U	100mm
824990	Cable Tray	26U	200mm
824977	Cable Tray	26U	100mm
824992	Cable Tray	26U	200mm
824996	Cable Tray	26U	300mm
824978	Cable Tray	36U	100mm
824993	Cable Tray	36U	200mm
824997	Cable Tray	36U	300mm
824979	Cable Tray	42U	100mm
824994	Cable Tray	42U	200mm
824998	Cable Tray	42U	300mm

# Safebox-B Range

Safebox-B is designed to keep your equipment safe. Rated to IP55 for dust and spray water protection, these cabinets are ideal for environments such as factory buildings, warehouses, and roofed outdoor areas. The rigid, durable construction is supplemented by tough polyester RAL 7035 paint. With accessories available for wall, floor, or pole mounting, this versatile cabinet is perfect for difficult environments.



# Safebox-B Range

## IP55 Cabinets (450mm depth)

Available in sizes from 7U to 16U. Maximum load capacity of 300Kg on the wall, or 800Kg on the ground. Wall brackets and grounding cable included.



### Technical Features

Product code	Description	Height	Width	Depth	Colour
827426	SAFEbox-B IP55 Cabinet	7U	600mm	450mm	Grey
827427	SAFEbox-B IP55 Cabinet	9U	600mm	450mm	Grey
827428	SAFEbox-B IP55 Cabinet	12U	600mm	450mm	Grey
827429	SAFEbox-B IP55 Cabinet	16U	600mm	450mm	Grey

# Safebox-B Range

## IP55 Cabinets (600mm depth)

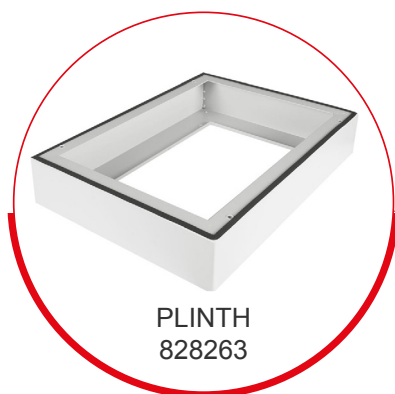
Available in sizes from 7U to 16U. Maximum load capacity of 300Kg on the wall, or 800Kg on the ground. Wall brackets and grounding cable included.



GROUNDING SET  
831920



POLE MOUNTING KIT  
827438



PLINTH  
828263



ADJUSTABLE FEET  
823414

### Technical Features

Product code	Description	Height	Width	Depth	Colour
827431	SAFEbox-B IP55 Cabinet	7U	600mm	600mm	Grey
827434	SAFEbox-B IP55 Cabinet	9U	600mm	600mm	Grey
827435	SAFEbox-B IP55 Cabinet	12U	600mm	600mm	Grey
827436	SAFEbox-B IP55 Cabinet	16U	600mm	600mm	Grey

# Safebox-B Range Accessories

## Fan Modules

These fan modules can be fitted in the top section of the Safebox-B wall mounting cabinet, allowing improved airflow and cooling throughout the cabinet. Adjustable thermostats are included to assist with temperature control.



### Technical Features

Product code	Description	No of Fans	Thermostat Control	Filter
827437	SAFEbox-B Fan	1 Way	Included	Included
829880	SAFEbox-B Fan	2 Way	Included	Included

## Earth Kit

Earth kits suitable for a range of cabinets, racks, and enclosures. Supplied with 4 leads.

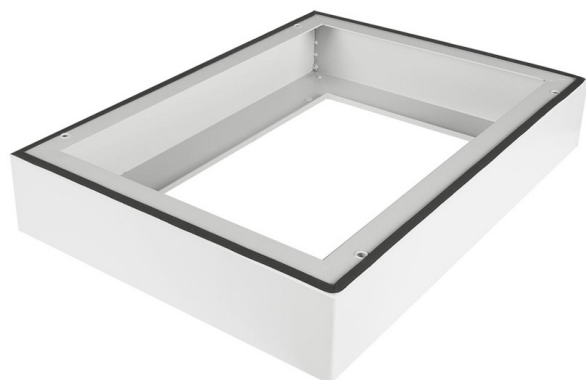


### Technical Features

Product code	Description	Leads	Diameter
831920	4 Lead Earth Kit with Fixings	4 x 400mm	2.5mm

## Plinths

100mm high plinth, complete with fixings to attach to the Safebox-B cabinet.



### Technical Features

Product code	Description	Width	Depth
827535	SAFEbox-B Cabinet Plinth	600mm	450mm
828263	SAFEbox-B Cabinet Plinth	600mm	600mm

# Safebox-B Range Accessories

## Mounting Plates

Backplates for mounting equipment to the Safebox-B. Pre-drilled with 6 rows of holes and supplied with fixings to attach to the rear of the cabinet.



### Technical Features

Product code	Description	Height
827439	Safebox-B Internal Mounting Plate	7U
827440	Safebox-B Internal Mounting Plate	9U
827441	Safebox-B Internal Mounting Plate	12U
827442	Safebox-B Internal Mounting Plate	16U

## Pole Mounting Kit

Bracket designed specifically for mounting the Safebox-B around poles 4" to 6" in diameter. Comprises two sets of rear mounting plates, brackets and fixings.



### Technical Features

Product code	Description
827438	Pole Mounting Kit

# IP65 Range

The IP65 range provides a high-quality solution for protecting your telecoms and industrial equipment from the elements. Available as standard with hot-dip galvanised construction, Stainless Steel variants (in three grades) are also available for the harshest environments. The double layer structure provides both strength and protection, and the hinged canopy roof with hidden louvres allows hot air to discharge through the roof without compromising protection.

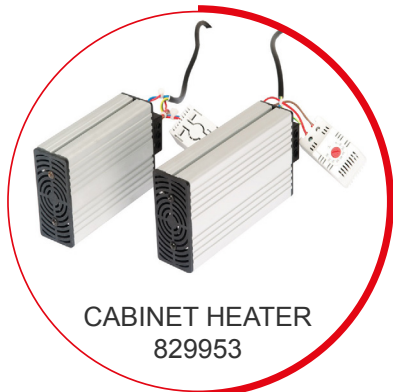
The IP65 range is finished with a durable yet aesthetically pleasing polyester RAL 7035 paint.



# IP65 Range

## Industrial Freestanding Cabinets

Available in 12U - 26U, and in two depths, 650mm and 850mm.  
Plinth is 200mm high with front and rear access panels.



### Technical Features

Product code	Description	Height	Width	Depth
828913	IP65 Industrial Cabinet and Galvanised Steel Plinth	12U	600mm	650mm
828916	IP65 Industrial Cabinet and Galvanised Steel Plinth	16U	600mm	650mm
828917	IP65 Industrial Cabinet and Galvanised Steel Plinth	20U	600mm	650mm
828918	IP65 Industrial Cabinet and Galvanised Steel Plinth	26U	600mm	650mm
828960	IP65 Industrial Cabinet and Galvanised Steel Plinth	12U	600mm	800mm
828961	IP65 Industrial Cabinet and Galvanised Steel Plinth	16U	600mm	800mm
828962	IP65 Industrial Cabinet and Galvanised Steel Plinth	20U	600mm	800mm
828963	IP65 Industrial Cabinet and Galvanised Steel Plinth	26U	600mm	800mm

# IP65 Range Accessories

## Fan Modules

Long life fan modules for the IP65 cabinet, supplied with thermostat, switch, and filter. Thermostat operating temperature 0° - 60°C.

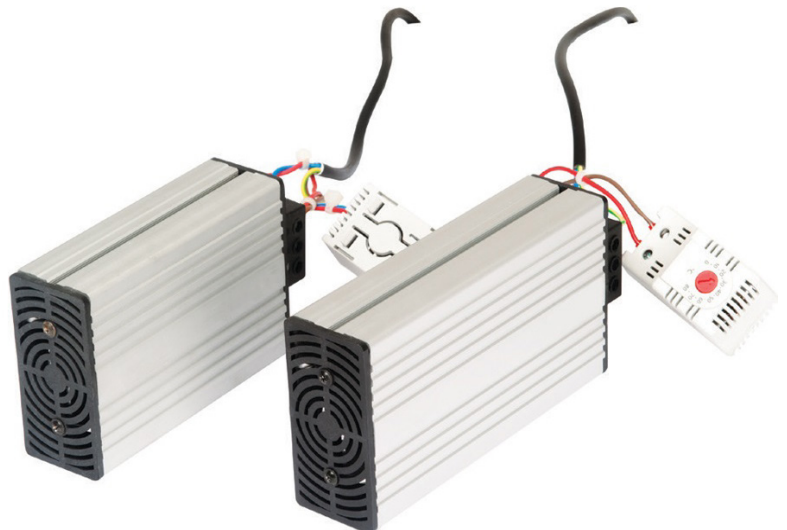


### Technical Features

Product code	Description	No of Fans	Thermostat Control	Filter
829606	IP65 Fan	1 Way	Included	Included
829607	IP65 Fan	2 Way	Included	Included

## Cabinet Heaters

Available in 30W to 150W and supplied with a 35mm DIN rail for ease of mounting. Integrated thermostat.



### Technical Features

Product code	Description	Heating Capacity	Thermostat
829948	Cabinet Heater For Use with Outdoor Cabinets	30W	Integrated
829951	Cabinet Heater For Use with Outdoor Cabinets	100W	Integrated
829953	Cabinet Heater For Use with Outdoor Cabinets	150W	Integrated

# Soundproof Range

Designed to be the perfect solution to offices, public buildings, hotels, or areas where high data use CAD/CAM servers need to be located close to users, the Soundproof range uses high density materials for the doors, panels, and inner skins, resulting in noise reduction of up to 30dB. Thermostatically controlled low noise fans in the rear door maintain a good airflow through the cabinet without causing a distraction, while the rigid frame provides a load rating up to 1000Kg.

Supplied with both heavy duty castors and adjustable feet, as well as vertical cable management panels, and a brushed cable entry in the front, the Soundproof range is the ultimate in quiet versatility.

RAL 9005 Black melamine coated chipboard doors fitted as standard.



# Soundproof Range

## Acoustic Freestanding Cabinets

Available in three sizes. Supplied with heavy duty castors and adjustable feet.

Load rating up to 1000Kg.



### Technical Features

Product code	Description	Height	Width	Depth	Colour
831977	Acoustic Rack Cabinet	17U	750mm	1130mm	Black
831978	Acoustic Rack Cabinet	32U	750mm	1130mm	Black
831979	Acoustic Rack Cabinet	42U	750mm	1130mm	Black

# Set & Stack Range

The Set & Stack 19 inch wall mounting bracket is an innovative and cost-effective solution for wall mounted installations where limited U height is available and floor space is limited. These brackets are supplied flat-packed and feature a modular design which is both robust and compact, making them easy to store and assemble on-site. Set & Stack is the ultimate in a versatile, cost effective solution for installers and end users alike.



# Set & Stack Range

## Stackable Wall Bracket

Set & Stack offers quick and simple expansion of an existing wall bracket for additional U height. Offering adjustable depth and a top and bottom cover to create the ultimate future proof wall bracket solution.



### Technical Features

Product code	Description	Height	Depth	Colour	Quantity
836094	Stackable Wall Bracket	2U	250-430mm	Black	Single
836095	Stackable Wall Bracket	3U	250-430mm	Black	Single
836096	Stackable Wall Bracket	4U	250-430mm	Black	Single
836120	Stackable Wall Bracket	6U	250-430mm	Black	Single
836121	Stackable Wall Bracket	8U	250-430mm	Black	Single
836122	Top and Bottom Closing Panel with Brushed Cable Entry	-	-	Black	Pack of 2

## **CONTACT DETAILS**

### **For Orders**

Phone: +44 (0)1480 415000

Email: [orders@comtecdirect.co.uk](mailto:orders@comtecdirect.co.uk)

### **For Quotes**

Phone: +44 (0)1480 415000

Email: [sales@comtecdirect.co.uk](mailto:sales@comtecdirect.co.uk)

[www.comtecdirect.co.uk](http://www.comtecdirect.co.uk)