

ASCEND® 4RU Fiber Housing



Description

ASCEND® fiber housing is available in 4RU size with densities of up to 576 fibers. Designed to support incremental growth or a full-scale deployment, ASCEND housings provide the ultimate in ease-of-use and fiber management features. ASCEND 4RU housing is 19/23" rack-mountable and constructed using galvanized steel for an extended service life. The front and rear doors are both hinged on the bottom, while the rear section of the housing cover is removable for unobstructed access to all connector interfaces. Integrated routing rings at the front of the trays enable secure and organized routing of patch cords which facilitates efficient Moves, Adds, and Changes (MACs). ASCEND 4RU housing is compatible with a wide variety of ASCEND optical cassettes which can be mixed and matched within the same enclosure to offer plug-and-play versatility. Cassettes can be independently installed from the front or rear of the housing onto a sliding tray system. The rear of the housing incorporates a trunk cable management area that features multiple cable mounting positions that are designed to securely manage slack while allowing the trays to slide in/out for installation and service.

Features and Benefits

- High-density: 4RU / 576F (LC) - 12 trays per housing
- Galvanized steel construction
- Designed for 19" rack as standard, optional 23" rack mount kit available
- Hinged front and rear doors and removable back cover

- BASE-8, BASE-12, and BASE-24 compatibility
- Cassettes install independently from front or rear of housing
- Compatible with all ASCEND cassettes
- Interchangeable cassette options for multiple applications
- Trunk cable management area accommodates ASCEND® trunk cable assemblies equipped with integrated cable mounting clip

Applications

- Data centers
- Headends
- Wavelength Division Multiplexing (WDM)
- Central offices
- Structured cabling networks

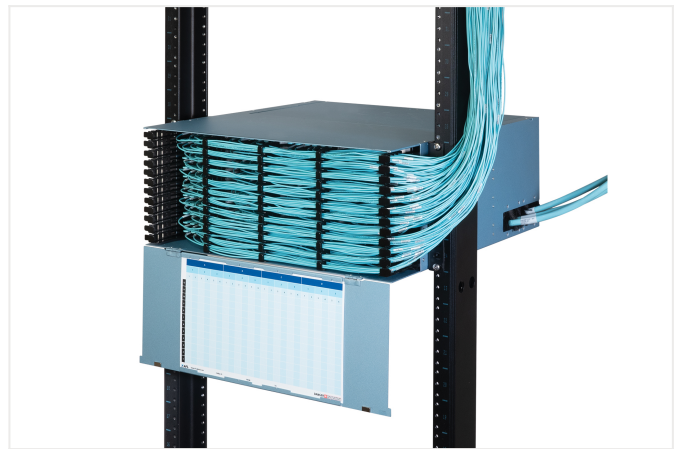
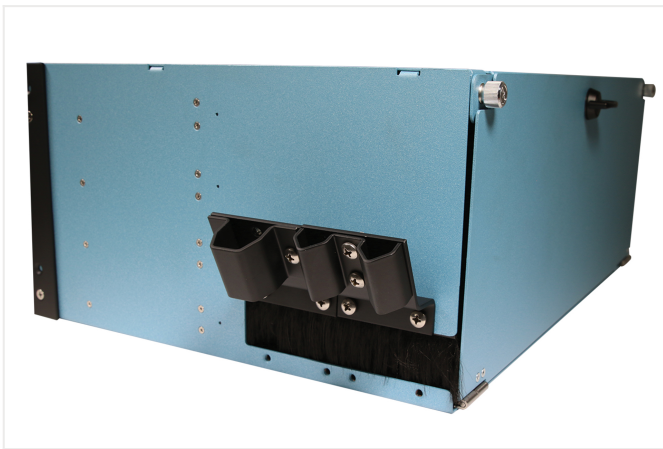
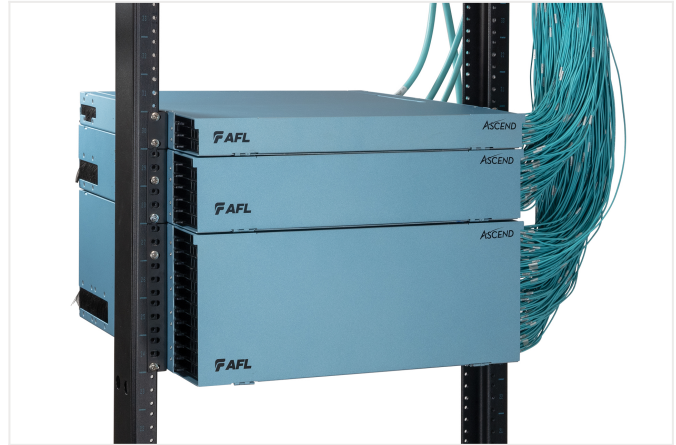
Specifications

PARAMETER	SPECIFICATION
Rack Space	4RU
Fiber Density Number of Trays	576F 12
Cassette Capacity	72 x BASE-8 Cassettes (6 per tray) 48 x BASE-12 Cassettes (4 per tray) 24 x BASE-24 Cassettes (2 per tray)
Dimensions* (HxWxD)	176.5 x 444.5 x 500 mm 7.0 x 17.50 x 19.7 in
Weight	15.5 kg 34.2 lb
Color	Blue
Material	Metal Components: 16 GA Steel per ASTM A366 Plastic Components: UL 94 V-2 minimum

Ordering Information

Part Number	Description Characteristic
ASCEND-4RU-8-RT	ASCEND 4RU Housing BASE-8 Cassette Trays Blue
ASCEND-4RU-12-RT	ASCEND 4RU Housing BASE-12 Cassette Trays Blue
ASCEND-4RU-24-RT	ASCEND 4RU Housing BASE-24 Cassette Trays Blue

Additional Images



Related Products



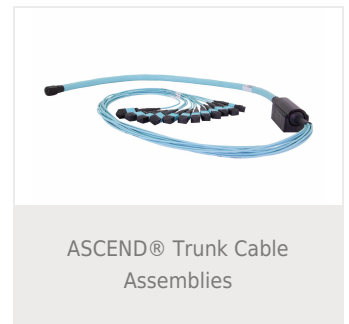
ASCEND® Fanout Cassettes



ASCEND® Patch Cassettes



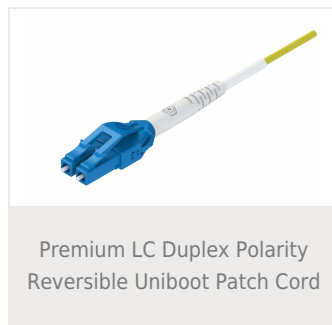
ASCEND® Splice Cassettes



ASCEND® Trunk Cable Assemblies



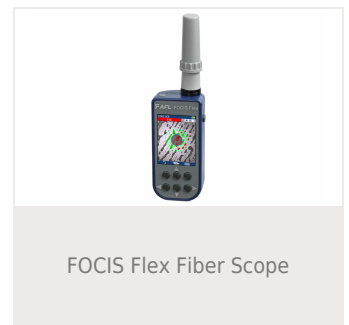
250µm Wrapping Tube Cable (WTC) with SpiderWeb Ribbon® (SWR®)



Premium LC Duplex Polarity Reversible Uniboot Patch Cord



FCP2 Fiber Cleaning Kit for SC/ST/FC/LC/MPO



FOCIS Flex Fiber Scope



FOCIS Lightning MPO/MTP®
Fiber Scope