

UK Mounting Hardware for LANmark

LANmark UK Style Angled 50 x 50 Module 2 Snap-In White

Nexans ref.: [N423.540UN](#)

- Kit of 50x50 back module with Snap-In front module
- Accommodates 2 Snap-In connectors
- Suitable for both copper and fibre
- Installation benefit thanks to angled design
- Colour white

DESCRIPTION

Application

- This UK style 50x50 angled module can accommodate 2 LANmark Snap-In connectors.
- It is also designed to hold fibre Snap-In adaptors, LC or SC, duplex or simplex.
- For detailed information on Nexans Snap-In connectors and fibre adaptors, please refer to the corresponding datasheets.

Guarantees

- UL 94V0 plastic material.

Installation

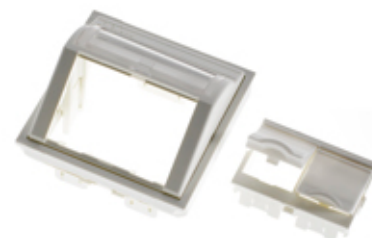
- The LANmark Snap-In connectors easily clip in the shuttered front module, which then is mounted into the 50x50 module without the need for any tools.
- Due to the angled position of the connectors, the minimum bend radius of the cables is maintained, even in situations where depth is restricted.
- The inclined faceplate also protects the patch cords and prevents dust entry when the shutters are left open.
- The 50x50 angled module fits into a wide range of UK style frames, surface mount boxes and trunking.

Features:

- Labelling window for easy management and port identification.
- Compatible with all Nexans Snap-In format connectors and adaptors
- Compatible with all Nexans 50x50 structural hardware
- Allows vertical and horizontal mounting in cable ducts
- Side clips can be easily removed if necessary
- Shuttered front module can be inserted in 2 different positions

Included in the kit:

- Labelling window
- Shutters



LANmark

STANDARDS

International ISO/IEC 11801

UK Mounting Hardware for LANmark

LANmark UK Style Angled 50 x 50 Module 2 Snap-In White

Optional:

- Coloured shutters (bag of 100):
 - red - N421.701RED
 - blue - N421.701BLU
 - green - N421.701GRE
 - yellow - N421.701YEL
 - orange - N421.701ORA
 - black - N421.701BLA
 - dark grey - ref. N421.701DGR