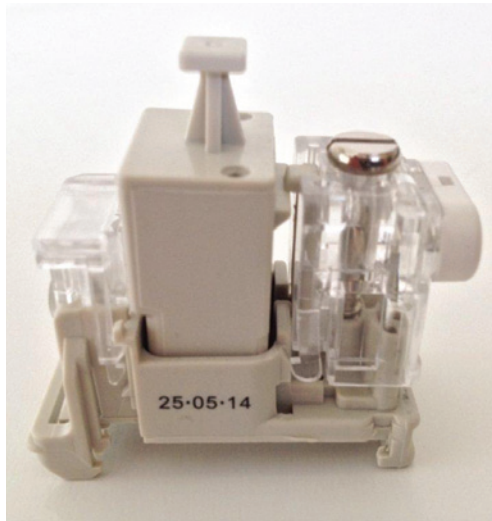
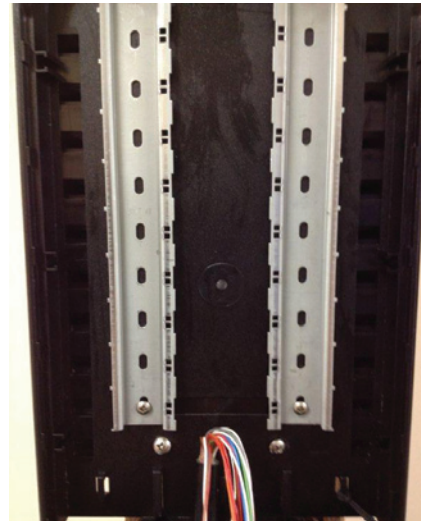


ECM 1B Installation Guide.



1. Dexgreen ECM 1B Module.



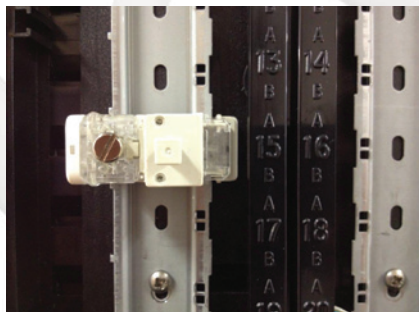
2. Indented Din rail in BT Distribution Box.



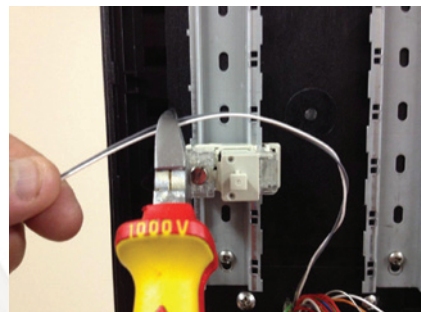
3. Locate and clip the ECM1B screw side on to the indented din rail position.



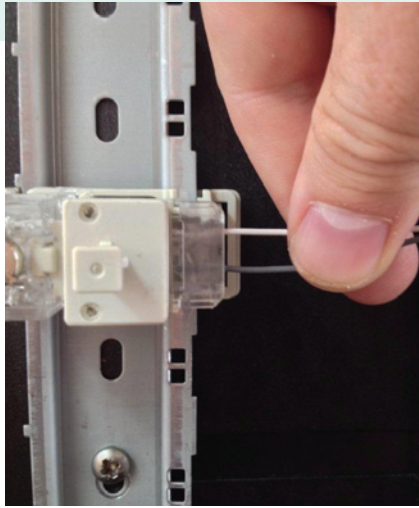
4. Take a flat headed screw driver and insert in to clasp located to the back side of the ECM 1B module. Exert an outward force whilst pushing down the module to engage and lock module into position on the indented din rail.



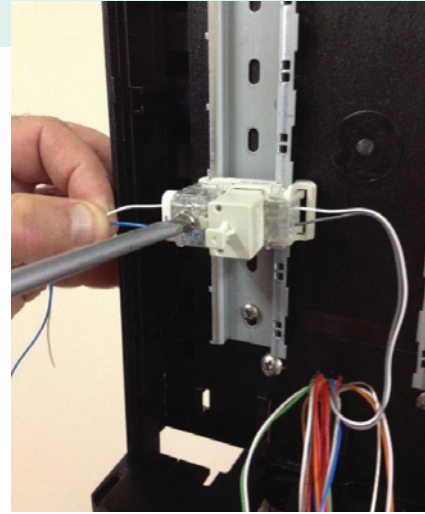
5. When the module is inserted correctly it is secured on to the din rail within the indented cut out with no sideways movement. The module is spaced to align with the pair marking on the housing cover..



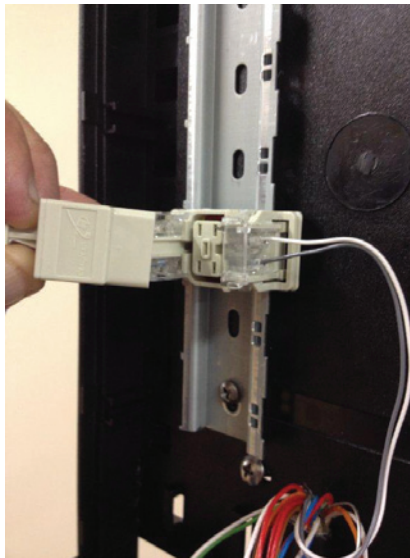
6. The exchange side wiring should be cut to length leaving some slack for further re-termination..



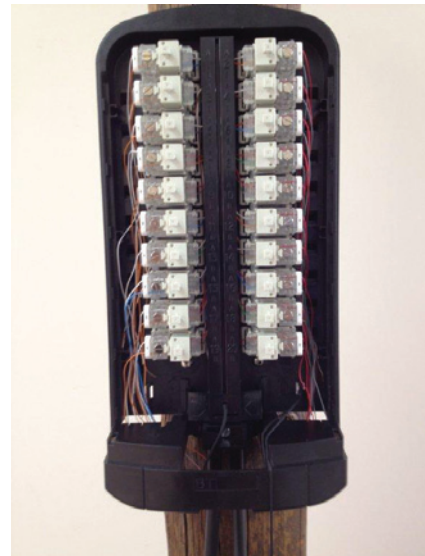
- 7.** Cut the single pair wires equally to length, straighten wires and then insert fully and straight into the port entry holes of the slider which should be in the open lifted position. Ensure wires are straight and fully inserted equally before pushing the slider down to make the IDC termination connection.



- 8.** Moving to the drop wire side screw connection. Cut the single pair wires equally and then insert fully into the port entry holes. Screw down the housing until you come to a stop. No need to over tighten.



- 9.** The dummy plug/continuity plug can be removed for testing (using an Adaptor test 51A) or for fitting an over voltage module plug (EPM 2B) as required.



- 10.** Fully Populated box showing ECM1B.