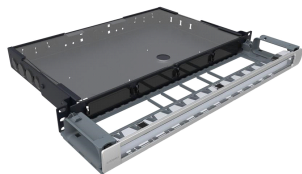


G2 1U Fixed Modular Cassette Panel \*NOTE: THIS PART IS CANCELED IN NAR & CALA – replace with 760210732, HD-1U-FX



## Product Classification

<b>Portfolio</b>	CommScope®
<b>Product Type</b>	Fiber patch panel
<b>Regional Availability</b>	Asia   Australia/New Zealand   EMEA

## Dimensions

<b>Depth</b>	355.60 mm   14.00 in
<b>Height</b>	44.45 mm   1.75 in
<b>Width</b>	482.60 mm   19.00 in
<b>Weight</b>	4.63 kg   10.20 lb

## General Specifications

<b>Rack Units</b>	1.0
<b>Shelf Movement</b>	Fixed
<b>Application</b>	Accepts four G2 modular cassettes   Accepts two RoloSplices with three trays each

## Regulatory Compliance/Certifications

<b>Agency</b>	<b>Classification</b>
RoHS 2011/65/EU	Compliant
ISO 9001:2015	Designed, manufactured and/or distributed under this quality management system

