

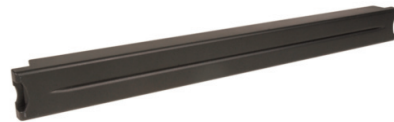
Airflow Management Accessories for Racks and Cabinets

Blanking panels and brush guard panels help to improve thermal efficiency by preventing airflow through vacant rack-mount spaces within enclosures. By isolating the front of the cabinet, these panels keep the cold air directed at the equipment where it is needed. Thermal blanking panels help to prevent recirculation of hot air to improve a facility's cooling effectiveness. These panels also fill empty rack-mount space to conceal openings or reserve the positions for future use. Brush guard panels provide the added benefit of allowing cables to pass through the front and rear of a rack or cabinet while still providing thermal protection to maintain isolation.



SnapFit™ Thermal Blanking Panels

- Durable, lightweight panels
- Cost effective solution for data centers
- Snaps quickly into place without requiring tools
- Fits cabinets and racks with square mounting rail holes
- Easy to remove when space is ready to be used
- 1U height for maximum flexibility



Standard Filler Panels

- Metal panels screw into racks or cabinets
- Blank on one side and Siemon logo on the other
- 1U, 2U, 3U, 4U flat panels
- 1U and 2U angled panels



Brush Guard Panels

- 1U height
- Internal brush to allow cable pass-through



ORDERING INFORMATION

Thermal Blanking Panels

Blank filler panels are ideal for installations where open or expansion rack space is to be covered. Aluminium panels are blank on one side and feature the Siemon logo on the other side.

Part #	Description
PNL-TBLNK010-1S.	SnapFit™ thermal blanking panel for 19 inch rack, 1U, square holes, black, plastic, package of 10
PNL-TBLNK100-1S.	SnapFit thermal blanking panel for 19 inch rack, 1U, square holes, black, plastic, box of 100
PNL-BLNK-(X)-(X).	Blank filler panel for 19 inch rack, black
PNL-BLNKA-(X).	Angled blank filler panel, blank

Use the first (X) to specify color: 1 = black, 2 = white, 4 = gray
 Use second (X) to specify rack mount space height of panel: 1 = 1U, 2 = 2U, 3 = 3U, 4 = 4U
 Note: 1U = 44.5mm (1.75 in.)

Part #	Description
PNL-BRSH-(X)	19 Inch brush guard panel, 1U, black

Use the first (X) to specify color: 1 = black, 2 = white, 4 = gray
 Use second (X) to specify rack mount space height of panel: 1 = 1U, 2 = 2U, 3 = 3U, 4 = 4U
 Note: 1U = 44.5mm (1.75 in.)



Because we continuously improve our products, Siemon reserves the right to change specifications and availability without prior notice.

Because we continuously improve our products, Siemon reserves the right to change specifications and availability without prior notice.

**Worldwide Headquarters
North America**
Watertown, CT USA
Phone (1) 860 945 4200

**Regional Headquarters
Europe Russia Africa**
Chertsy, Surrey, England
Phone (44) 0 1932 571771

**Regional Headquarters
China**
Shanghai, P.R. China
Phone (86) 215385 0303

**Regional Headquarters
Latin America**
Bogota, Colombia
Phone (571) 657 1950/51/52

**Regional Headquarters
India Middle East**
Dubai, United Arab Emirates
Phone (971) 4 3689743

**Regional Headquarters
Asia Pacific**
Sydney, Australia
Phone (61) 2 8977 7500

**Siemon Interconnect Solutions
Watertown, CT USA**
Phone (1) 860 945 4213 US
www.siemon.com/SIS