

# FAST-FIT Cat5e/6 RJ45 PLUGS



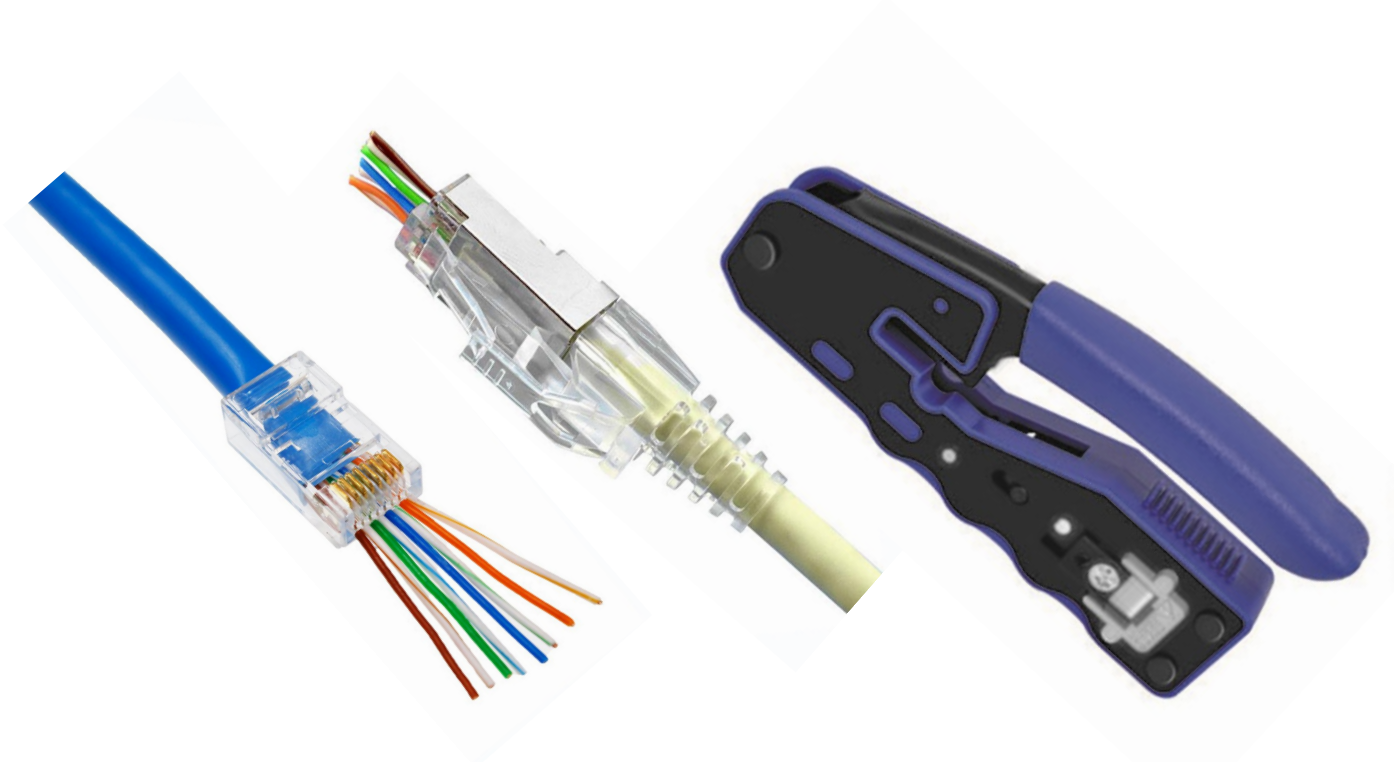
## Technical information

### Features:

- ◆ Easy to terminate RJ45 plugs
- ◆ Optimised performance due to reduced length of untwisted wires
- ◆ Faster termination times and reduced errors by checking wiring positions before crimping
- ◆ Suitable for stranded and solid wires
- ◆ One piece construction
- ◆ Unshielded and shielded options
- ◆ Compact, ergonomic tool with flush cutting blade

## Specifications

Plug Body	Polycarbonate, UL94V-0
Plug Contact	Phosphor bronze, finished with 50µ gold plating on jack contact area
Plug Screen (where fitted)	Brass, nickel plated
Maximum Cable Sheath Diameter	6mm
Suitable Wire Sizes	22 to 26AWG



## Part Numbers

Item	Description	Shield	Pack Size	Colour
821409	Fast-Fit Cat5e RJ45 Plug	Unshielded	100	Clear
821410	Fast-Fit Cat6 RJ45 Plug	Unshielded	100	Clear
821411	Fast-Fit Cat6 RJ45 Plug	Shielded	100	Clear/Silver
821820	Fast-Fit Cat6 Plug Boot		100	Clear
821426	Fast-Fit Compact Crimp Tool		Each	Blue/Black
821821	Replacement Blade for Fast-Fit Crimp Tool		Each	Silver