

# OptiSheath® Multipurpose Enclosure

CORNING

## Features and Benefits

**OptiTip® MT Connector compatible with FlexNAP™ System, MDU terminals, FDT stubbed terminals**

**OptiTap® Cable Assembly connector ports for customer drop terminations**

**Smaller more compact size**

**IP 68 rated**

**Lower installation costs and fastest customer connection**

**Up to 16 drop ports (8, 12, or 16); other counts available on demand and wide range of distribution cable entries with loop-through capability on main distribution cable**

**Single strain-relief for better/easier cable preparation**

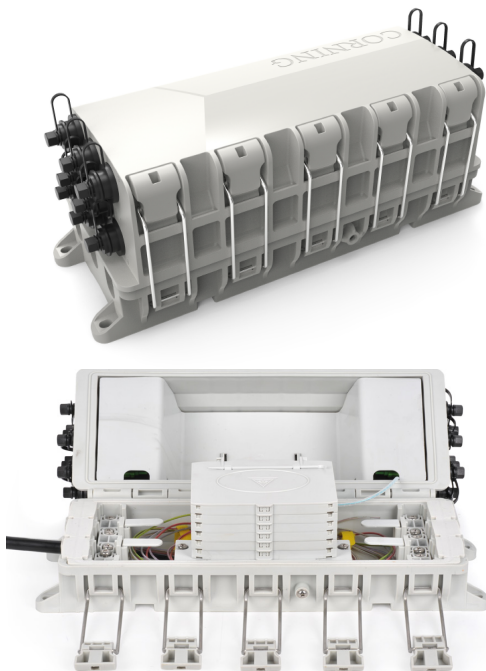
**Single mounting device for all applications: aerial (pole and hanging), façade (wall) and underground (in chamber or direct buried)**

**Flexible for many network scenarios**

**Splitters can be accommodated including adding capacity after initial installation**

**Highly reliable system with high closure sealing performance**

**Reduce initial network capital cost**



OptiSheath® Multipurpose Enclosure

Corning's multipurpose enclosure (MPE) is a multi-functional in-line closure designed for use in outside plant fiber access networks. This new generation of Corning preconnectorized closure provides sealed environmental protection and fast, easy incremental connection of subscriber drop cables while increasing deployment velocity in just the same way as can be achieved using a Corning multiport terminal.

However, the MPE sealed terminal has the added advantage of serving as a splice point where higher fibre count distribution cables can be branched to lower fibre count cables or to the stubbed cables of multiport terminals. Optical splitters can also be housed inside this terminal, which is particularly appropriate for distributed split PON architectures.

The closure can be deployed underground chambers, wall mounted on buildings, direct buried, or aerially installed on poles or messenger wires. Individual customer connections are achieved using OptiTap® or OptiTip® ports located at either end of the closure body. Up to 16 ports can be accommodated, eight at either end. The OptiTip® connector is the key enabler for quick connect of up to 12 fibers at a time. The connector is based on the field proven MTP® connector technology encapsulated in a hardened package suitable for use in any environment. A male (pinned) version and a female (non pinned) version are easily joined to make a watertight terminal or in-line connection. Factory installation and testing ensures reliable, low optical loss on all fibers. The terminal consists of two hinged half shells which are sealed using a reusable silicone ring and grommets. All drop ports are contained in the top half and cable entry ports in the bottom half.

Fibre management inside the closure is achieved using a new simplified tray which facilitates installation time. Each tray can house a maximum of 24 splices (in a double stack) providing a maximum splice capacity for the closure of 144 splices.

The trays can also be pre-loaded with optical splitters in a range of split ratios. The outputs of these optical splitters can be pre-connectorised. In this way, additional capacity can easily be installed into the closure after initial installation by adding splitter trays and connecting the outputs to the spare OptiTap® or OptiTip® ports inside the closure.

# OptiSheath® Multipurpose Enclosure

CORNING

## Specifications

Dimensions	365 x 160 x 150mm (LxWxH)
Cable ports	6 ports (3 on both sides) suitable for mid-span access
Drop connector ports	Up to 16 (8 on either side)
Main cable range	3mm-17mm
Central member fixing for main cable	Yes
Distribution cable range	3mm-17mm
Supported cables	Conventional round cable, flat drop cable, Minicable, MiniXtend® cable, microduct compatible
Maximum splice fiber capacity	144-fiber
Trays pre-installed	Yes
Heat-shrink splice protector support	Yes
Heat-shrink splice count per tray	24
Splitter support	Yes
Buffer storage	Available
Sealing type	Compression fittings
Color	Black and grey



Corning Optical Communications LLC • PO Box 489 • Hickory, NC 28603-0489 USA

800-743-2675 • FAX: 828-325-5060 • International: +1-408-736-6900 • [www.corning.com/opcomm/oem](http://www.corning.com/opcomm/oem) • Email: [oemsales@corning.com](mailto:oemsales@corning.com)

Corning Optical Communications reserves the right to improve, enhance, and modify the features and specifications of Corning Optical Communications products without prior notification. A complete listing of the trademarks of Corning Optical Communications is available at [www.corning.com/opcomm/trademarks](http://www.corning.com/opcomm/trademarks). All other trademarks are the properties of their respective owners. Corning Optical Communications is ISO 9001 certified.

© 2017 Corning Optical Communications. All rights reserved.

Spec Sheet MPE-0001-BEN Page  
2 | Revision date 2018-03-01

CORNING