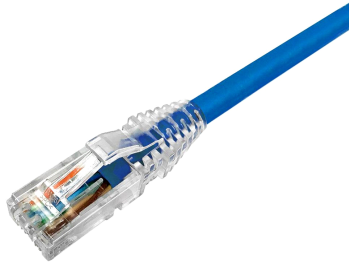


# NPC6AUZDB-BL



## NPC RJ45 Patch Cord, category 6A, Unshielded, LSZH, Blue

- High-performance patch cords exceeding industry standards supporting NETCONNECT channel specifications
- Standardized transparent, slim-line boots provides consistent patch cord appearance and supports highest density applications
- Colored clips are available to fit the transparent boot, eliminating the need of multiple colors for matching every jacket color
- Colored pull latch tabs are available for easier plug release handling from the modular jack

## Ordering Details

<b>Complete Part Number</b>	<b>Cord Length</b>
NPC6AUZDB-BL150C	150 cm

## Product Classification

<b>Portfolio</b>	NETCONNECT®
<b>Product Series</b>	NPC
<b>Product Type</b>	Twisted pair patch cord
<b>Regional Availability</b>	EMEA

## Dimensions

<b>Cord Length, maximum</b>	100 m   999 cm
<b>Cord Length, minimum</b>	1 m   50 cm
<b>Diameter Over Jacket</b>	7.24 mm   0.29 in

## Electrical Specifications

<b>ANSI/TIA Category</b>	6A
--------------------------	----

## Environmental Specifications

<b>Environmental Space</b>	Low Smoke Zero Halogen (LSZH)
<b>Operating Temperature</b>	-20 °C to +60 °C (-4 °F to +140 °F)
<b>Safety Standard</b>	UL 1863

## General Specifications

<b>Cable Type</b>	U/UTP (unshielded)
<b>Interface, connector A</b>	RJ45 plug
<b>Interface, connector B</b>	RJ45 plug
<b>Jacket Color</b>	Blue

# NPC6AUZDB-BL

---

<b>Interface Feature, connector A</b>	Standard
<b>Interface Feature, connector B</b>	Standard
<b>Package Quantity</b>	1
<b>Pairs, quantity</b>	4

## Mechanical Specifications

<b>Conductor Type</b>	Solid
<b>Conductor Gauge, solid</b>	24 AWG
<b>Plug Insertion Life, minimum</b>	750 times
<b>Wiring</b>	T568B

## Regulatory Compliance/Certifications

**Agency**  
RoHS 2011/65/EU

**Classification**  
Compliant

## Included Products

CC884014044/BU | CC6AZH BLU C6A 4/24 SO U/UTP RL BULK (Product Component—not orderable) — CC6AZH Category 6A U/UTP Cable, non-plenum, blue jacket, 4 pair count, bulk length, reel

6-2843008-1 | MP-6AU-Plug-B-1 — Modular Plug, Category 6A/6, Unshielded, Cond Insulation OD - 0.79mm, 100 pcs

2843018-3 | MP-6AU-Boot-71-1 — Integrated Boot and Pair Manager for MP-6AU, 71 mm, transparent