

# High Density 1U Fiber Connect Panel System

## High-Density FCP3 Fiber Connect Panel

Economically connect, protect and manage up to 96 fibers within 1 rack mount unit. Designed to integrate with high density FCP3 fiber Plug and Play modules.



### High Density

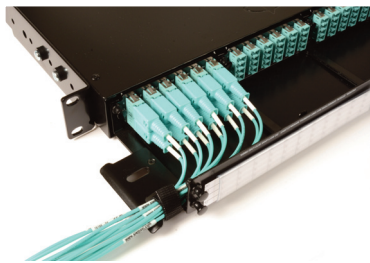
Supports up to 96 fibers in just 1U

### Enhanced Accessibility

Fiber drawer slides to the front and rear for maximum access to fiber connections

### Bend Radius Management

Recessed modules provide a high-capacity jumper management zone that helps maintain proper fiber bend radius



### Part #

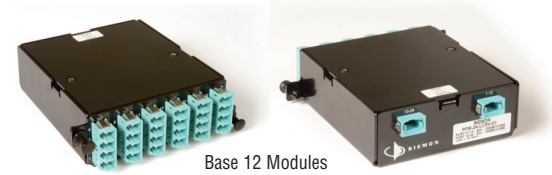
### Description

FCP3-DWR-4A . . . . . High-density FCP3 fiber enclosure, black, 1U

*Note: Maximum fusion splice capacity is 72 fibers.*

## High Density FCP3 Connect Panel Plug and Play Modules and Adapter Plates

Siemon LC to MTP® FCP3 Plug and Play modules and LC adapter plates are designed for simple, snap-in deployment within the high density FCP3 Fiber Connect Panel. Providing up to 24 LC fibers per module, the factory terminated and tested modules are available in OM3 and OM4 multimode and singlemode configurations. The LC adapter plates provide a simple way to integrate traditional LC to LC connectivity within the high density FCP3 enclosure.



### High Density

Modules provide up to 24 LC fibers per module, supporting up to 96 ports within the 1U FCP3 Fiber Connect Panel

### 100% Fiber Utilisation and Future Application Support

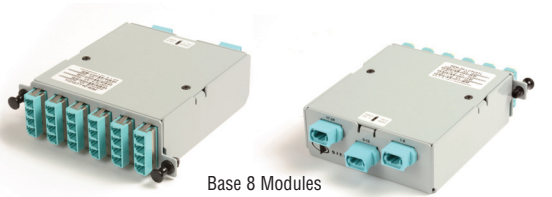
Base 8 modules feature three 8-fiber MTPs for use with 8-fiber assemblies used in 40 and 100 Gig applications and beyond, eliminating the need for conversion cords

### Fast Deployment

Snap-in mounting and multi-fiber MTP connectivity offers ultra-fast deployment of high-performance fiber channels

### Easy Identification

Modules are colour coded black for Base 12 and grey for Base 8 to easily distinguish between the two systems

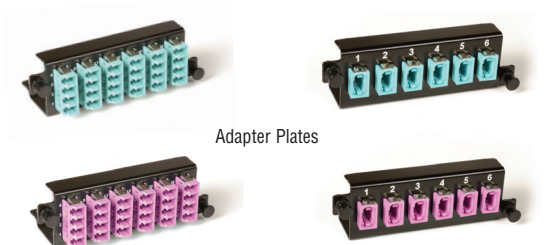


### Compact Housing

Reduces mounting depth for greater cable management space within enclosures

### Optimised Adapter Spacing

Enables easy finger access to fiber jumper connector latches in high density patching environments



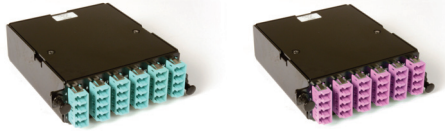
### Multimode and Singlemode Modules

Utilises zirconia ceramic sleeves for optimum performance

# High Density 1U Fiber Connect Panel System

## Ordering Information:

### Base 12 Modules



PPM-(XX)-L(X)(XX)-01(X) . . . . Base 12 HD FCP3 LC to MTP modules, black module

**Fiber Count**  
12 = 12 Fibers  
24 = 24 Fibers

**Shutter Door Option\***

C = Standard LC  
S = Shuttered LC

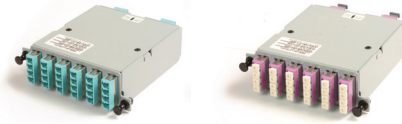
**Fiber Type**

5L = OM3, XGLO 300 50/125 Multimode Aqua adapters  
5V = OM4, XGLO 550 50/125 Multimode Aqua adapters  
EV = OM4, XGLO 550 50/125 Multimode, Erika Violet adapters  
SM = OS1/OS2, Singlemode Blue adapters

**Performance**

Blank = Standard Loss  
L = Low Loss (OM3/OM4 only)

### Base 8 Modules



PEM(X)24-L(X)(X)(X)-(XX)A . . . . 24 Fiber base 8 HD FCP3 LC to MTP modules, grey module

**Gender**

F = Female  
M = Male

**Shutter Door Option\***

C = Standard LC  
S = Shuttered LC

**Performance**

S = Standard Loss  
L = Low Loss (OM3/OM4 only)

**Polarity**

AC = Method A or C  
B1 = Method B (Side 1)  
B2 = Method B (Side 2)

**Fiber Type**

L = OM3 XGLO 300 50/125 Multimode, Aqua adapters  
V = OM4 XGLO 550 50/125 Multimode, Aqua adapters  
E = OM4, XGLO 550 50/125 Multimode, Erika Violet adapters  
A = OS1/OS2 Singlemode, Blue adapters



\* Optional Shuttered LC adapters feature a small plastic shutter door that opens upon insertion without touching the connector endface and springs back into the closed position upon removal to ensure protection of empty ports.

### Adapter Plates



PPM-F-L(X)(X)(XX)-01 . . . . . High-density FCP3 LC adapter plates, black

**Shutter Door Option\***

C = Standard LC  
S = Shuttered LC

**Adapter Colour**

Blank = Beige  
Q = Aqua  
E = Erika Violet  
U = BLue

**Fiber Count**  
12 = 12 Fibers  
24 = 24 Fibers



PPM-F-MP(XX)-01-(X) . . . . . High-density FCP3 MTP adapter plates, black

**Fiber Count**  
48 = 4 Port  
72 = 6 Port

**Adapter Colour/Key Orientation**

Q = Aqua - Opposed  
E = Erika Violet - Opposed  
B = Grey - Aligned  
Blank = Black - Opposed

### PERFORMANCE SPECIFICATIONS (STANDARD)

Fiber Type		MAX Insertion (dB)		Min. Return Loss (dB)		Performance Class
		MTP	LC	MTP	LC	
5L-MM	50/125 10G (OM3)	0.40	0.25	20	30	XGLO® 300
5V-MM	50/125 10G (OM4)	0.40	0.25	20	30	XGLO 550
SM-LWP	SM (OS1/OS2)	0.60	0.40	60	55	XGLO

### PERFORMANCE SPECIFICATIONS (LOW LOSS)

Fiber Type		MAX Insertion (dB)		Min. Return Loss (dB)		Performance Class
		MTP	LC	MTP	LC	
5L-MM	50/125 10G (OM3)	0.20	0.15	20	30	XGLO 300
5V-MM	50/125 10G (OM4)	0.20	0.15	20	30	XGLO 550

Part # Description  
PPM-BLNK . . . . . Blank adapter plate, black