

GMF - FXD

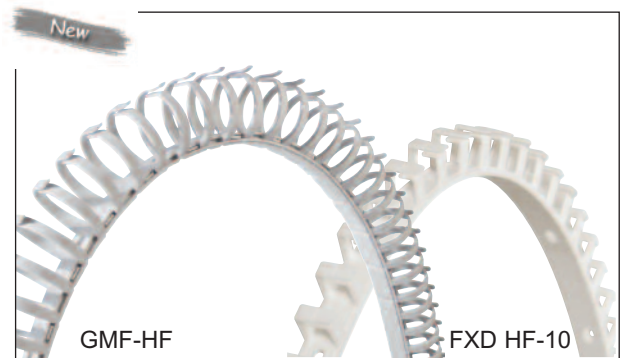
Material: polypropylene,
quality flame resistant

Color: light grey RAL 7035

Operating temperatures: -40 to +70°C

Specification: V2 UL94
halogen-free

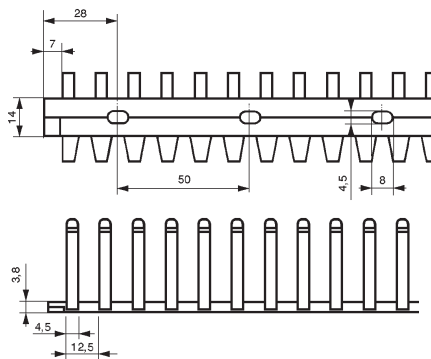
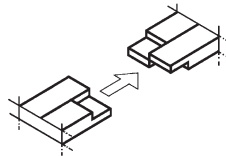
Application: PLIOFLEX is a flexible cable trunking system for use in control panels, distribution boards, or in difficult to reach areas.



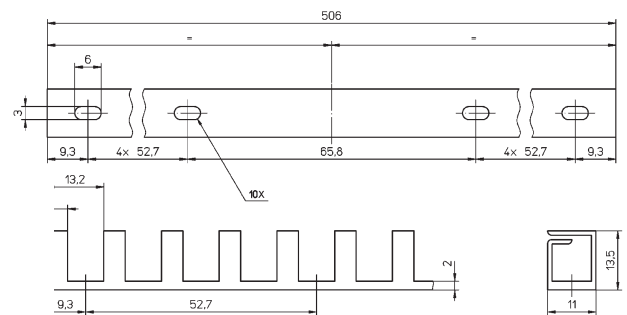
type	article number	boxes	type	article number	packs	H mm	L mm	D mm
		pce			pce			
without adhesive tape (in lengths of 50 cm)								
FXD HF-10	0588 0010 001	100				13,5	11	-
GMF HF-20	0847 0020 013	60	GMF HF-20 SB	0847 0025 013	2	24	23	19
GMF HF-30	0847 0030 013	36	GMF HF-30 SB	0847 0035 013	2	35	33	28
GMF HF-40	0847 0040 013	24				46	44	37
with adhesive tape (in lengths of 50 cm)								
GMF HF-20T	0847 0120 013	60	GMF HF-20T SB	0847 0125 013	2	24	23	19
GMF HF-30T	0847 0130 013	36	GMF HF-30T SB	0847 0135 013	2	35	33	28
GMF HF-40T	0847 0140 013	24				46	44	37



Two or several lengths can be joined by snapping the ends together.

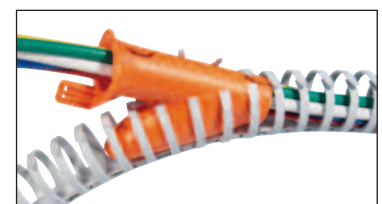


Round form: GMF



Square form: FXD

- Application:**
- Attach the cable trunking - webs turned upwards, connect one cable end and laterally insert the cable up to the requested branch point, connect the opposite cable end.
 - We recommend the PLIOZIP 20 tool (see page A5/4-01) for the inserting of cables.
 - We also recommend SES-marker rings for the identification of your cables.



- Attachment:**
- With screws, using the DIN standard base punching.
Recommended screws:
GMF - M4 with cheese head DIN 84 A and washer or M4 with cheese head DIN 85 A and washer;
FXD - M3 with cheese head DIN 85 A and washer or M3 with cheese head DIN 85 A and washer.
 - By the adhesive on the T type using a smooth, dry, clean and degreased surface (do not touch the adhesive). The assembly temperature must be above 10°C.