

Adjustable Drop Universal Flat Screen Ceiling Mount with Tilt

For more information please visit www.btechavmounts.com/BT8427

BT8427

Registered Design Number: 4003130, 4003650

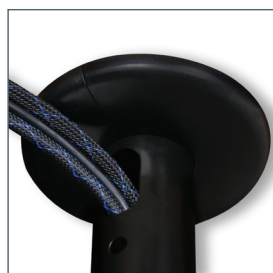


BT8427

Adjustable Drop Universal Flat Screen Ceiling Mount with Tilt

Designed for extra-large screens up to 65" (165cm) / 70kg (154lbs)

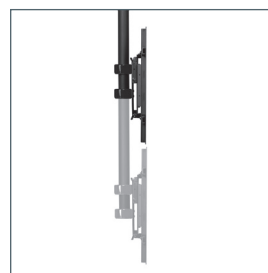
- Fits screens with mounting patterns up to H: 970mm (38.2") x V: 500mm (19.7") including VESA® fixings up to 800 x 500mm
- Ceiling drop: 745mm (29.3") - 1000mm (39.4")
- Easy tilt adjustment +20°
- Pre-assembled for simple 3 step installation
- Integrated cable management
- Mounts screen in landscape or portrait formats
- Universal screen fixing kit supplied, including M4, M5, M6 and M8 screws
- Simple 'hook-on' installation with all mounting hardware included
- Available in Black and Silver



Integrated cable management



Easy adjustment of tilt



Adjustable drop



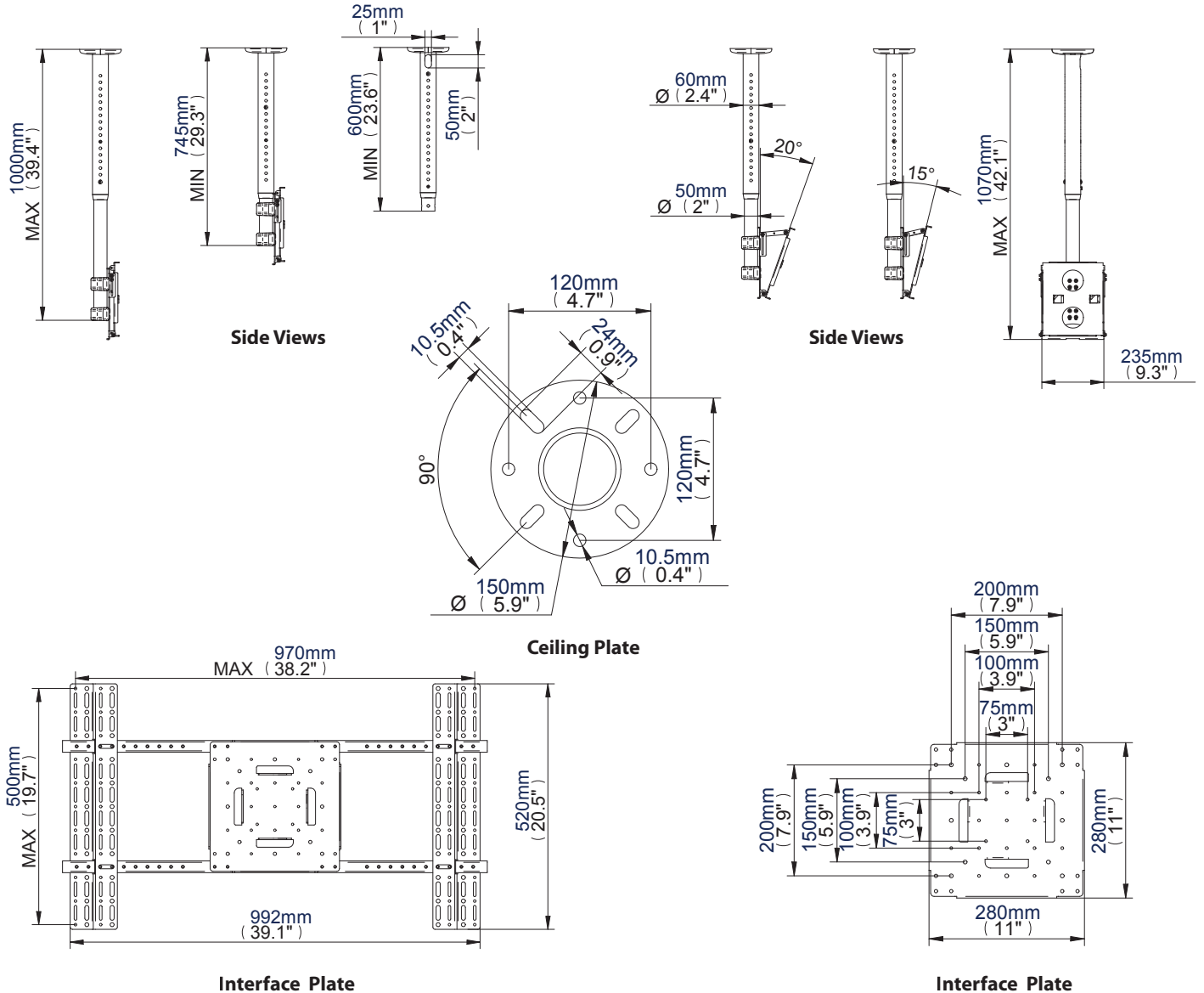
Simple hook on installation

Adjustable Drop Universal Flat Screen Ceiling Mount with Tilt

For more information please visit www.btechavmounts.com/BT8427

BT8427

Registered Design Number: 4003130, 4003650



Colour:	Order Ref:	EAN Code:	Master Carton Qty:	Inner Carton Qty:	Master Carton Weight:	Master Carton Cube:
Black	BT8427/B	5019318084454	1	0	15.6kg (34.39lbs)	0.054cbm (1.891cuft)
Silver	BT8427/S	5019318084447	1	0	15.6kg (34.39lbs)	0.054cbm (1.891cuft)

**This information is intended as a guide only and reflects the current specification at the time of print.
B-Tech accepts no liability for the accuracy of the information contained in this document.**